

# Can Ibiza Nueva

Region: Ibiza Sleeps: 12

## Overview

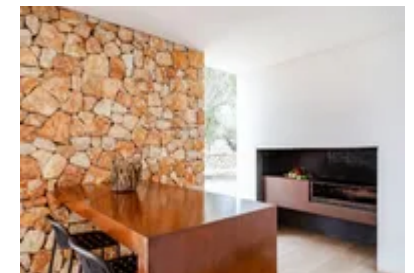
Can Ibiza Nueva is a thoughtfully designed luxury villa that captures the essence of Mediterranean living with an emphasis on space, light and comfort. Arranged on a single level, the interior has been carefully planned to allow Ibiza's natural light to fill every room, creating a bright and relaxed atmosphere throughout the property. With approximately 380 m<sup>2</sup> of internal space, the villa features six private suites, each with its own en-suite bathroom and living area, providing comfort and privacy for all guests.

The living and dining areas are positioned to overlook the outdoor pool, thanks to large windows that visually connect the indoor and outdoor spaces. This layout maximises views and encourages social interaction, whether preparing meals together in the fully equipped kitchen with high-end Siemens appliances or relaxing in the living room. A highlight of the property is not only the large exterior space, but also the second kitchen, located outside, allowing for guests to cook up big delicious meals to enjoy together on those warm summer evenings.

Importantly, Can Ibiza Nueva is located next to a sister property, Can Ibiza Campo (<https://www.oliverstravels.com/spain/ibiza/santa-eulalia/can-ibiza-campo/>). The two villas can be booked together, providing an excellent solution for larger groups, multi-generational families or special occasions, while still maintaining privacy and generous individual living spaces. Enquire with us today about renting both properties together!

## Facilities

Tennis Nearby • Ideal for Kids • Walking/Hiking Paths • Horse Riding • Watersports • Private Pool • Historical Sites • Wine Tasting • Recommended • Air-Con • Golf Nearby • Sailing • Scuba Diving • Boat Trips • Villa • Chef/Cook Available • Wow Factor • Ideal for Teens • Has Discount • Special Offer • Maid Service Included • Cots (Cribs) • Pets on Request • All Bedrooms En-Suite • Beach Nearby • Instagrammable • Ground Floor Bed & Bath • Saltwater Pool • Modern • <1hr to Airport • Parking Space • Wi-Fi/Internet • BBQ • Washing Machine • Outstanding Landscapes • Coffee Machine • Outdoor Pursuit & Activities • TV • Garage • Tumble Dryer • Dishwasher • Microwave • Safety Deposit Box • Heating • Yoga Classes Available • Spa Treatments Available • Transfers Available • Fenced Grounds



# Interior & Grounds

## Interior

- Open plan living room with large dining table, various sofas, and access to the terrace
- Fully-equipped kitchen with high-end Siemens appliances
- Six bedrooms with double beds and ensuite bathrooms with showers

## Exterior

- Covered terrace with various seating options and large outdoor dining table
- Exterior kitchen with barbecue
- Large garden space with olive grove
- Private saltwater pool (18 m) with surrounding sun loungers and parasols
- Garage

## Additional Facilities

- Wi-Fi connection
- Air conditioning
- Dishwasher
- LCD TV (in all bedrooms)
- Safe (in all bedrooms)
- Washing machine
- Tumble dryer

Land size: 20,000 m<sup>2</sup>

Property size: 460 m<sup>2</sup>



# Location & Local Information

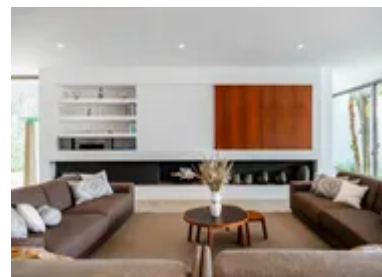
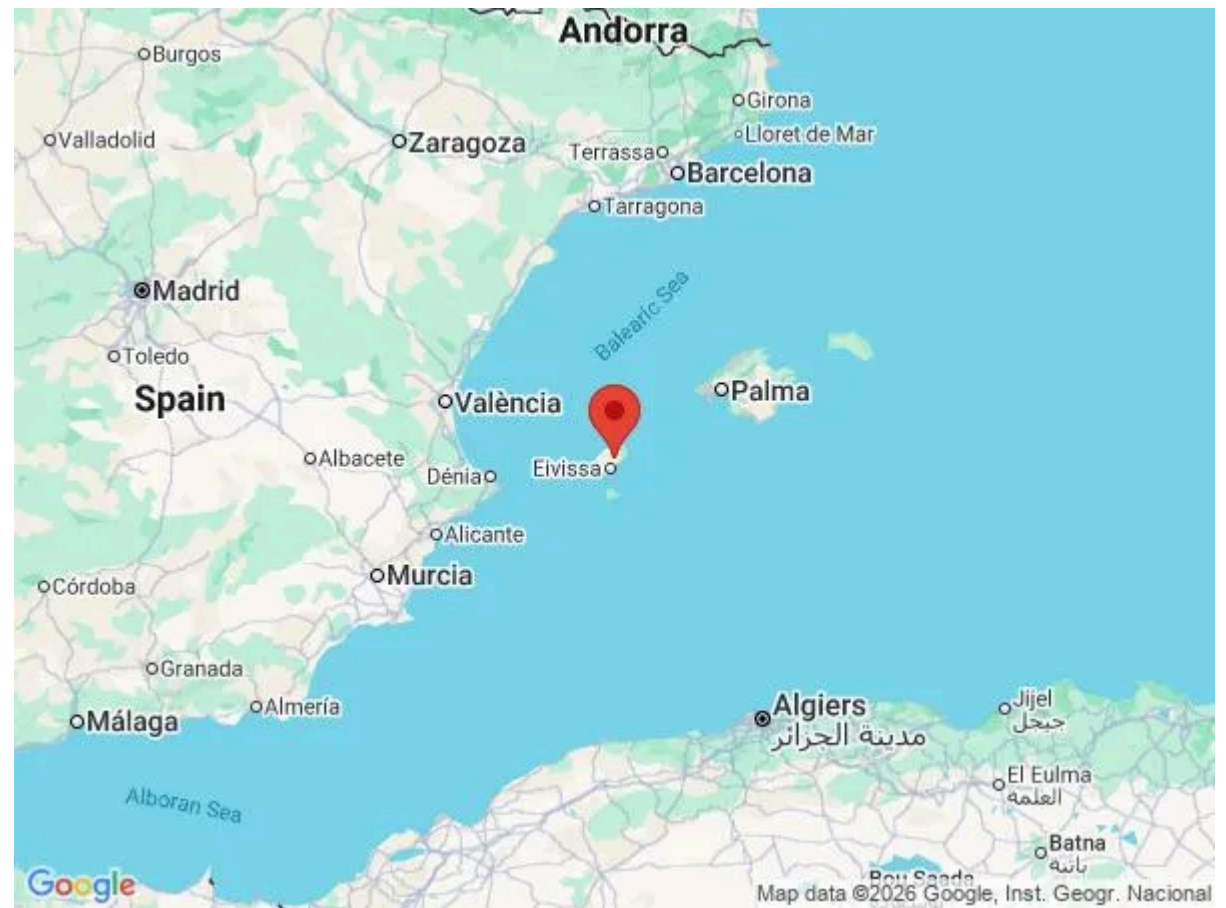
Can Ibiza Nueva is conveniently located for access to Ibiza's main transport hub and local amenities. Ibiza Airport, the closest international airport, lies roughly 18 km southwest of the property, with a typical drive taking about 20 minutes by car or taxi.

From the villa's setting in the Ibiza countryside, the bustling coastal town of Santa Eulària des Riu is just a short journey away - typically under 10 minutes by car. Santa Eulària is known for its relaxed atmosphere, family-friendly beaches, and scenic promenade, combining seaside leisure with local culture. Here, visitors can stroll the harbour, relax on sandy shores, or enjoy a wide choice of bars, cafés and restaurants serving Spanish and Mediterranean cuisine.

Beyond dining and beach life, Santa Eulària offers boutique shopping, weekly markets, and historic sights such as the hilltop Puig de Missa church with panoramic views. It provides a quieter alternative to Ibiza's more high-energy hotspots while still giving easy access to the island's wider attractions, making it a practical and pleasant base for exploring Ibiza.

## Local Amenities

Nearest Airport	<b>Ibiza Airport</b> (18 km)
Nearest Bar/Pub	<b>Ibizkus Wines</b> (3 km)
Nearest Beach	<b>Santa Eulalia Beach</b> (6 km)
Nearest Ferry Port	<b>Santa Eulalia Ferry Port</b> (7 km)
Nearest Ferry Port	<b>Ibiza Ferry Port</b> (11 km)
Nearest Golf	<b>Golf Ibiza</b> (10 km)
Nearest Restaurant	<b>Nagai</b> (500 m)
Nearest Supermarket	<b>Supermercat Es Cruce</b> (1 km)
Nearest Tennis	<b>Santa Eulalia Tennis Club</b> (7 km)
Nearest Town	<b>Santa Eulalua</b> (6 km)



Nearest Village

**Santa Gertrudis**  
(7 km)

## What we love

- Can Ibiza Nueva is a stylish and modern property, located just a short drive from Santa Eulalia, and provides a calming retreat for your next holiday to Ibiza
- There are six well-appointed ensuite bedrooms to choose from here, so there will be no fighting for the best room!
- Located next door to this villa is Can Ibiza Campo (<https://www.oliverstravels.com/spain/ibiza/santa-eulalia/can-ibiza-campo/>), the charming sister property to Can Ibiza Nueva which can be booked alongside this one - get in touch more information!
- The large exterior spaces provide plenty of options for guests to relax in and make the most of their next holiday away

## What you should know...

- The pool is not fenced, so children should be supervised at all times
- Please note that this single-storey property has bedrooms that have access to the exterior space and onto the pool

# Terms & Conditions

- **Security deposit:** €3,000 paid via credit card to the owner before arrival and refunded two weeks after departure, subject to full inspection.
- **Arrival time:** 4 pm.
- **Departure time:** 10 am.
- **Energy costs included?:** Yes, included in the rental price.
- **Linen & towels included?:** Yes, included in the rental price and changed on the middle day of a stay.
- **Pets welcome?:** On request only and with prior agreement with the owner. If allowed, a supplement charge may apply. Please request this during the booking process.
- **Other Ts and Cs:** A daily cleaning service of 4 hours per day is included in the rental price. Please note that this is not available on Sundays.
- **Changeover day:** Flexible.
- **End of stay cleaning available?:** Yes, standard changeover clean included. Guests are required to leave the accommodation clean, tidy and in the same condition as on their arrival. Any extra cleaning, laundry, maintenance and/or rubbish disposal required will be charged against the security deposit.
- **Smoking Allowed?:** Smoking & Vaping are not permitted.
- **Minimum stay:** 7 nights. All other durations on request.
- **Heating costs included?:** Wi-Fi internet access included in the rental price.
- **Pool heating charge?:** Not available.
- **Tax:** Balearic Eco Tourist Tax of €2.20 per person per night for over 16's is not included in the rental price and will need to be paid prior to arrival via a link direct to the supplier.
- **Internet access?:** Wi-Fi internet access included in the rental price.
- **Pool towels included?:** Yes, included in the rental price.
- **Stag & Hen Do Allowed? :** Weddings, stag/hen parties and any special events are on request only and subject to prior arrangement with the owner and additional charges.
- **Noise policy :** Please be aware that music is only allowed to be played outside until 9 pm. Inside, guests can play music until 2 am. Live music is not permitted under any circumstances.