

Fenton Tower Estate

Region: East Lothian Sleeps: 20

Overview

Steeped in Scottish history yet refined for contemporary comfort, Fenton Tower Estate offers an extraordinary private retreat for up to 20 guests in the heart of East Lothian. Just 18 miles from Edinburgh and moments from North Berwick's coastline, this restored 16th-century fortified tower commands sweeping views across rolling countryside once chosen for its strategic importance.

Today, the tower has been meticulously transformed into a five-star residence arranged over five floors, where thick stone walls, spiral staircases and oak-beamed ceilings frame an experience that is both atmospheric and indulgent. The dramatic Great Hall invites evenings by the fire, while the vaulted dining room, illuminated by candlelight and centred around an antique walnut table, sets the scene for memorable feasts prepared by private chefs using exceptional local produce.

Six beautifully appointed bedrooms within the tower are complemented by the contemporary Fenton Lodge and the Hillside Cottage each offer an two additional en-suite bedrooms.

Surrounded by world-renowned golf courses including Muirfield and Gullane, and within easy reach of Edinburgh's cultural highlights, Fenton Tower delivers a rare opportunity to stay in a remarkable piece of Scottish heritage without compromising on luxury.

Facilities

Walking/Hiking Paths • Historical Sites • Has Discount • Special Offer • Ground Floor Bed & Bath • Wi-Fi/Internet • Rural Location • Outstanding Landscapes • Outdoor Pursuit & Activities • Tourist Towns & Villages • Smart TV • Heating



Interior & Grounds

The Tower

Ground Floor

- Fully-equipped kitchen (available for refreshments but not full self-catering)
- Vaulted dining room with seating for 32 guests
- Cloakroom
- WC

First Floor

- Great Hall with roaring fire
- Library snug with TV and private bar
- "Seton Suite" with twin single beds (accessed via its own spiral staircase)

Mezzanine

- "Sydserff Suite" with single bed

Second Floor

- "Carmichael Suite" with Italian silver-gilt double bed and adjacent bathroom with freestanding cast iron bath and walk-in shower
- "Ruthven Suite" with Provincial Half-tester king size bed and en-suite bathroom with original Doulton of Pisleigh canopy bath

Third Floor

- "Erskine Suite" with super-king size bed and en-suite bathroom with French antique copper bath (can be set up with twin single beds on request)
- "Stewart Suite" with super-king size bed and en-suite bathroom (can be set up with twin single beds on request)

Fourth Floor

- "Garrett Suite" with double bed, sitting area and en-suite shower room (can be set up with twin single beds on request)

The Lodge

- Open-plan living space with TV and terrace access
- Fully-equipped kitchen with Nespresso machine
- Bedroom with super-king size bed and en-suite bathroom (can be set up with twin single beds on request)
- Bedroom with super-king size bed and en-suite shower room (can be set up with twin single beds on request)

Cottage

- Entrance
- Open-plan living space with direct access to the terrace and lawn including:
- Fully equipped kitchen with full-size fridge freezer, washer/dryer, Nespresso machine and tea-making facilities
- Dining table seating four guests
- Comfortable lounge area with TV and BOSE wireless speaker
- Bedroom 1 (East Bedroom): Super king-size zip-and-link bed (can be arranged as twins)
- En-suite bathroom with over-bath shower
- Bedroom 2 (West Bedroom): Super king-size zip-and-link bed (can be arranged as twins)
- En-suite bathroom with large walk-in shower



Exterior Grounds

- Terrace
- Lawn
- Ample parking

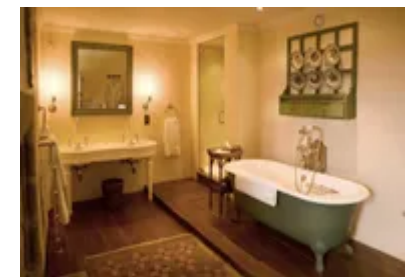
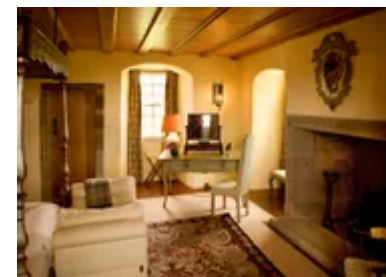
Location & Local Information

Fenton Tower Estate, holds a wonderful location set in the heart of East Lothian, guests will feel a million miles away from any hustle and bustle while the closest amenities can be found in the coastal town of North Berwick, which is less than 10-minute drive away. North Berwick is home to beautiful beaches and a helpful selection of shops and restaurants. Those with a keen interest in wildlife will enjoy a visit to North Berwick's Scottish Seabird Centre, informative and educational for the whole family!

The capital of Scotland, Edinburgh, is less than a forty-minute car journey from Fenton Tower Estate, and with its Medieval Old Town and Georgian New Town, it is bursting with excellent attractions, including, iconic Edinburgh Castle and the Palace of Holyroodhouse, the excellent Scotch Whisky Experience and Edinburgh Gin Distillery as well as Camera Obscura & World of Illusions and the Edinburgh Zoo, which the whole family will enjoy! For guests travelling in from afar, Edinburgh Airport is less than a 50-minute car journey away making for a short transfer time.

Local Amenities

Nearest Airport	Edinburgh Airport (54 km)
Nearest Beach	North Berwick (4.5 km)
Nearest City	Edinburgh (40 km)
Nearest Golf	Gullane Golf Club (8 km)
Nearest Restaurant	Osteria, North Berwick (4.5 km)
Nearest Supermarket	Tesco Superstore, North Berwick (5 km)
Nearest Town	North Berwick (4.5 km)



What we love

- The rare opportunity to stay in a restored 16th-century fortified tower with exclusive use for up to 20 guests.
- Atmospheric dining in the vaulted hall, with candlelit feasts prepared by private chefs using outstanding local produce.
- Immediate access to Scotland's legendary golf coastline, with Muirfield, Gullane and North Berwick all within easy reach.

What you should know...

- The tower is arranged over five floors and connected by spiral staircases, which may not be suitable for guests with limited mobility (the Lodge offers easier access).
- The historic architecture means some ceilings, stairways and doorways are characterfully narrow or uneven.
- The Lodge and Hillside Cottage is located a few metres from the main tower, offering added privacy but separate accommodation for four guests.
- Pre-arranged catering and additional services are available and should be organised in advance of your stay.

Terms & Conditions

- **Security deposit:** No security deposit is required for this villa. Please be aware that guests are still required to leave the accommodation clean, tidy and in the same condition as on their arrival.
- **Arrival time:** 1.00 p.m.
- **Departure time:** 11.00 a.m.
- **Energy costs included?:** Yes
- **Changeover day:** Flexible
- **Other 2:** Weddings and any special events are on request only and subject to prior arrangement with the owner and additional charges. Hen parties are not allowed.
- **Internet access?:** Wi-Fi internet access included.

Booking Deposit

Please note that for this property, a non-refundable deposit for 50% of the total booking cost is required at the time of booking.