

Chateau de Marigny

Region: Normandy Sleeps: 35

Overview

In the rolling hills of Normandy, just ninety minutes from Paris, Château de Marigny stands within its walled parkland as a vision from another age. Surrounded by 44 hectares of gardens and woodland, this remarkable estate offers a sense of privacy and grandeur, where every arrival feels cinematic and every stay becomes a story worth telling.

Flanked by two entrance towers dating back to 1307, the château reveals its medieval origins at first glance. Remodelled in the sixteenth and seventeenth centuries, it now embodies the refined symmetry of Louis XIII architecture, with brick and stone façades, lofty roofs and mullioned windows that draw light into the interiors. A moat of running water, fed by the Lévrière, encircles the château, reflecting its elegant silhouette. In the inner courtyard, sculpted topiary creates a striking focal point, while beyond stretches the sweeping perspective of the meadow and its tranquil *miroir d'eau*.

Inside, wood panelling and gracious salons with impressive ceiling heights create an atmosphere of quiet distinction. Listed as a historic monument since 1948, Château de Marigny carries its history with quiet confidence, its legacy carefully preserved through thoughtful restoration.

The château features exquisite living spaces, a beautiful kitchen, grand dining room and salon with *billard* table. This part of the estate sleeps 8 guests across four gorgeous bedrooms, each with its own private bathroom. From October to April, there is also the option to rent the château by itself for only 10 guests, in which case a fifth and rather sumptuous bedroom (where the owners otherwise reside) is made available to guests.

For larger groups and special events, the cottage wing offers twelve wonderful bedrooms, including a romantic master bedroom with a huge bathroom, a dorm-style room for younger guests and other exquisite doubles and singles all with private bathrooms. Two reception rooms can be set-up for family feasts and special events with pretty French windows opening to the gardens.

Outside, morning mist drifts over the water as sunlight filters through the trees. Woodland paths lead to the far edge of the estate, where deer move silently between the trees. Within the parkland, a swimming pool, tennis court, pétanque, trampoline and table tennis provide moments of leisure for all generations.

Set in a small village in the Eure department of Normandy, close to the borders of Seine-Maritime and Oise, the château is perfectly placed for exploring the many treasures of northern France. Gisors is just 14.5km away for medieval history, shops and restaurants, while Lyons la Forêt, Gerberoy and Giverny offer memorable day trips rich in heritage and artistry. Rouen is around an hour away, and even Paris is within reach by car or train for a fine day out in the capital.



For those seeking an exceptional setting for celebrations, gatherings or refined escapes, Château de Marigny promises an experience shaped by heritage, nature and historic grandeur.

Facilities

Horse Riding • Historical Sites • Cycling • Weddings • Walking/Hiking Paths • Tennis Court • Fishing • Chateaux & Castles • Romantic • Private Pool • Maid Service Available • Cots (Cribs) • Ideal for Teens • Marquee Hire Permitted • Maid Service Included • Chef/Cook Available • All Bedrooms En-Suite • Outdoor Ceremony • <1hr to Airport • Flexible Catering Options • Pool Safety Feature • Heritage Collection • Wi-Fi/Internet • Waterfront • Allow External Caterers • BBQ • Indoor Reception Available • Outstanding Landscapes • Nearby Church/Chapel • Outdoor Pursuit & Activities • Tourist Towns & Villages • Table Tennis • Laptop Friendly Workspace • Indoor Games • Outdoor Games • Working Fireplace/Woodburner • Heating • Caretaker/Owner on Site • Cooking Classes Available • Board games • Trampoline • Boules/Petanque • High Chair(s)

Interior & Grounds

- 1) Château only (10-person price) - 5 bedrooms in château (only available October to April)
- 2) Château and Cottage (35-person price) - 4 bedrooms in château and 12 bedrooms in cottage

Château Interiors

- Entrance hall
- Main living room with sofa, chairs and fireplace
- Second living room with sofas and chairs
- Dining room with fireplace
- Lounge with sofas fireplace, billard table (adults only), desk and library
- Kitchen, well-equipped, with breakfast table
- La Galerie with seating
- Landing with seating (overlooking étang)
- Landing with seating (overlooking French garden)

Château Bedrooms (across different floors/wings)

- Bedroom (68.4m²) with double bed, lounge area and en suite bathroom with bath/shower and WC. Stairs from bathroom lead to mezzanine level
- Bedroom (18.4m²) with double bed and en suite bathroom with bath and WC
- Bedroom (21.3m²) with double bed and bathroom with bath and WC
- Bedroom (14.2m²) with double bed and bathroom with shower and separate WC

Independent Chateau Wing – please note this bedroom is only included in the 10-person rate, otherwise the owners reside here.

- Bedroom suite (63.9m²) with double bed, lounge area, desk, dressing area and bathroom with bath and WC

Cottages Interiors (one large dwelling that used to be divided as three individual cottages)

- Living room (24.8m²) with sofa, armchairs and doors opening to garden
- Kitchen, well-equipped including electric hob, steam oven, oven, double fridge with freezer space, ice-maker, standard fridge, coffee machine and professional dishwasher (3-minute cycle without drying feature)
- Large reception room (67.8m²)
- Connecting smaller reception room (43.5m²)
- WCs for events

Ground Floor Bedrooms

- Master Bedroom (35.7m²) with double bed, sofas, doors opening to garden and large en suite bathroom with bath, shower and WC
- Bedroom (19.2m²) with double bed (can be split as twin) and en suite bathroom with bath and WC

Upper Floor Bedrooms (various floors/wings)

- Dorm-style 7-person bedroom (via steps) with three single beds, two pull-out single beds, bunk-bed and two en suite shower rooms with WC (one at the bottom of the steps)



- Bedroom (14.6m²) with double bed (can be split as twin) and en suite bathroom with bath, shower and WC
- Bedroom (15.3m²) with double bed (can be split as twin) and en suite bathroom with bath, shower and WC
- Bedroom (14.6m²) with double bed (can be split as twin) and en suite bathroom with bath, shower and WC
- Bedroom (17.1m²) with double bed (can be split as twin) and en suite bathroom (via staircase in the room) with bath, shower and WC
- Bedroom (9.3m²) with single bed and en suite shower room with shower and WC
- Bedroom (15.1m²) with double bed (can be split as twin) and en suite bathroom with bath, two sinks and WC
- Bedroom (15.1m²) with double bed (can be split as twin) and en suite shower room with shower and WC
- Bedroom (18.4m²) with double bed (can be split as twin) and en suite bathroom with bath, shower and WC
- Bedroom (8.2m²) with single bed and en suite shower room with shower and WC

Outside Grounds

- Swimming pool (13x6m, approx. 1.2m), gated. Pool open approximately June to mid-September
- Barbecue (included in 10-person rate only)
- Topiary garden
- Pigeonnier terrace
- Meadow with *miroir d'eau* (large pond/open water)
- Quick tennis court
- Table tennis
- Trampoline
- Pétanque court
- Walled parkland with 44 hectares of gardens and woodland
- Walking paths, bridges, river and open water
- Moat with running water

Location & Local Information

Set in small rural village in the Eure department of Normandy, close to the Seine-Maritime and Oise borders, Château de Marigny enjoys a superb location within easy reach of some of northern France's most captivating landscapes and cultural treasures. The historic castle is almost equidistant between Dieppe and Paris and only an hour from Rouen. The château's owners are delighted to share recommendations for excellent local dining, from relaxed bistros to refined fine dining across the region.

For day-to-day needs, the town of Gisors (14.5km) offers good amenities, shops and restaurants, along with a rich medieval heritage. Dominated by the imposing ruins of Château de Gisors, once a strategic stronghold between the French and English crowns, the town is steeped in history. Wander its historic streets and you'll sense the legacy of the Knights Templar and centuries of Norman intrigue.

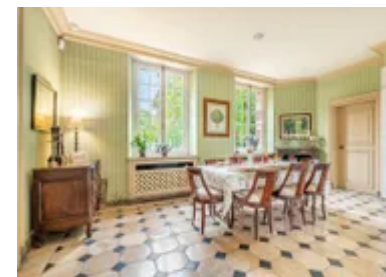
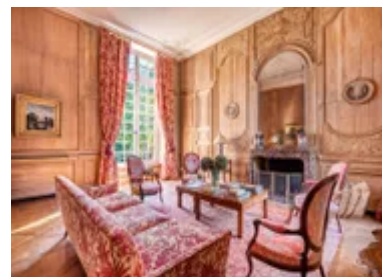
Outdoor pursuits abound across the region's countryside. Horse-riding, hot-air balloon rides and canoeing or kayaking along the Eure River allow you to experience Normandy's rolling landscapes from every angle. Golfers can head to Golf Chaumont-en-Vexin for a scenic round, while walkers will find glorious trails nearby.

There are enchanting excursions in every direction. Lyons-la-Forêt (16.5km), officially one of France's 'Plus Beaux Villages', charms with its half-timbered houses and access to hiking paths through the majestic beech forest. Gerberoy (26km) is another picture-perfect village, famed for Les Jardins Henri Le Sidaner. Art lovers should not miss Giverny (42km) and Claude Monet's house and gardens, while Rouen makes a rewarding day trip. Paris, too, is within reach for a memorable day out, whether by car or train from Gisors.



Local Amenities

Nearest Airport	Paris Beauvais Airport (42km)
Nearest Airport 2	Paris Charles de Gaulle Airport (90km)
Nearest Airport 3	Paris Orly Airport (107km)
Nearest City	Rouen/Paris (53km/87km)
Nearest Ferry Port	Dieppe (89km)
Nearest Golf	Golf Chaumont-en-Vexin (22km)
Nearest Restaurant	Neuf-Marché (7.5km)



Nearest Shop	Sérifontaine (7.5km)
Nearest Supermarket	Gisors (15km)
Nearest Tennis	Quick tennis court on site (0km)
Nearest Town	Gisors (14.5km)
Nearest Train Station	Gisors (14km)
Nearest Village	In a small village (0km)

What we love

- A storybook French château set within 44 hectares of walled gardens and woodland, complete with a flowing moat and elegant Louis XIII architecture
- Historic interiors with wood panelling, soaring ceilings and gracious salons, all within a château listed as a historic monument since 1948
- Leisure for all generations, from the swimming pool and tennis court to pétanque, table tennis and a trampoline set within the parkland
- Sleeps 10 to 35 guests across the main château and beautifully renovated cottages wing – each bedroom features its own private bathroom
- Activities nearby include horse-riding, hiking through the forest and hot-air balloon rides over the countryside
- Perfectly placed for exploring Normandy's treasures, with charming destinations such as Lyons la Forêt, Gerberoy and Giverny within easy reach
- Explore the historic city of Rouen or you could even catch the train to Paris for a remarkable day out

What you should know...

- Sleeping up to 35 guests, there are four bedrooms in the château (8 guests) and twelve bedrooms in the separate cottage (27 guests). Please see the "Layout" tab for full details.
- The 10-person rate includes the château only - in this case, an annexed fifth double bedroom is made available (where the owners otherwise reside). This rate is only available October to April.
- Please note that the owners usually stay on site during your stay. There are also resident staff who live in cottages within the grounds.
- Due to the open water across the grounds (including a large moat with running water and more) this historic château is not ideal for young children (and all children will need to be supervised very carefully).

Terms & Conditions

- **Security deposit:** €5000 charged to client's credit card by Oliver's Travels as a pre-authorisation at least 2 weeks prior to arrival and refunded two weeks after departure, subject to full inspection.
- **Arrival time:** 2 p.m.
- **Departure time:** 12 p.m.
- **Energy costs included?:** Yes.
- **Linen & towels included?:** Yes.
- **Pets welcome?:** Not allowed.
- **Other Ts and Cs:** Weddings and any special events are on request only and subject to prior arrangement with the owner and additional charges. Stag/Hen parties are not allowed.
- **Changeover day:** Flexible.
- **End of stay cleaning:** Standard changeover clean included in the price. Guests are required to leave the accommodation clean, tidy and in the same condition as on their arrival. Any extra cleaning, laundry, maintenance and/or rubbish disposal required will be charged against the security deposit.
- **Other Cleaning:** 3 hour/day cleaning for main parts of castle and/or cottages. Rooms are charged €20/hour.
- **Smoking Allowed?:** Outside only.
- **Other 2:** The 10-person rate includes the château only and is available October to April only. This includes the four bedrooms listed in the "Layout" section plus a fifth annexed double bedroom (where the owners otherwise reside). The 35-person rate includes four bedrooms in the château and 12 bedrooms in the cottages. Please see the "Layout" tab for full details.
- **Minimum stay:** 2 nights.
- **Heating costs included?:** Yes.
- **Tax:** French Visitors Tax is included in the rental rates.
- **Pool opening dates?:** The pool is open approximately June to mid-September. Please note that pool opening dates are subject to local weather conditions and pool maintenance requirements and that cooler months may not be suitable for swimming.