

Highland Douro Escape

Region: Portugal Sleeps: 12

Overview

Set high above the Douro River, Highland Douro Escape is a striking contemporary retreat with far-reaching views across one of Portugal's most celebrated wine regions. Surrounded by vineyards and olive trees, this architect-designed home makes the most of its elevated position, with wide glass openings and expansive terraces framing the shifting colours of the valley below.

Designed across two levels, the villa combines clean architectural lines with natural materials such as slate, flint and hardwood, creating a refined yet grounded atmosphere. Light-filled interiors flow easily into outdoor living spaces, where a private swimming pool and lawned gardens provide the perfect setting for long, sun-filled days and relaxed evenings.

Inside, guests can enjoy a range of features including a fully equipped kitchen, multiple living and dining areas, a games room, and a dedicated spa space with jacuzzi, sauna and steam room. A separate studio cabin set among the vines adds flexibility for larger groups or those seeking additional privacy.

With space for up to 12 guests, Highland Douro Escape is well suited to families or groups of friends looking to experience the Douro Valley from a truly memorable vantage point.

Facilities

Wine Tasting • Private Pool • Villa • Ideal for Kids • Air-Con • Wellness • Special Offer • Has Discount • Ideal for Teens • All Bedrooms En-Suite • Parking Space • BBQ • Outstanding Landscapes • Outdoor Pursuit & Activities • Tourist Towns & Villages • TV • Pool/Snooker • Table Tennis • Indoor Games • Hot Tub • Wine Cellar • Table Football • Heating • Fenced Grounds



Interior & Grounds

Villa Interiors

- Open-plan living and dining area with large glass windows
- Fully fitted and equipped kitchen
- Direct access to outdoor terraces and pool area
- Games room with table football, table tennis and pool table
- Wine cellar (seating for 4)
- Spa area with jacuzzi, sauna, steam room, shower and bathrooms
- 2 x double bedrooms with en-suite bathroom
- 3 x twin bedrooms with en-suite bathroom

Separate Vineyard Cabin

- Kitchenette
- Bathroom
- Double bedroom

Outside Grounds

- Private swimming pool
- Lawn gardens
- Outdoor dining areas
- Barbecue and wood-burning oven
- Parking

Additional Facilities

- Wi-Fi
- Air conditioning
- Heating
- TV (multi-language)



Location & Local Information

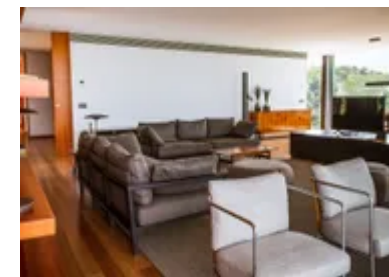
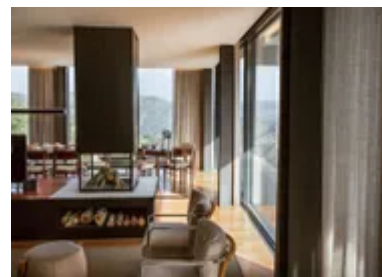
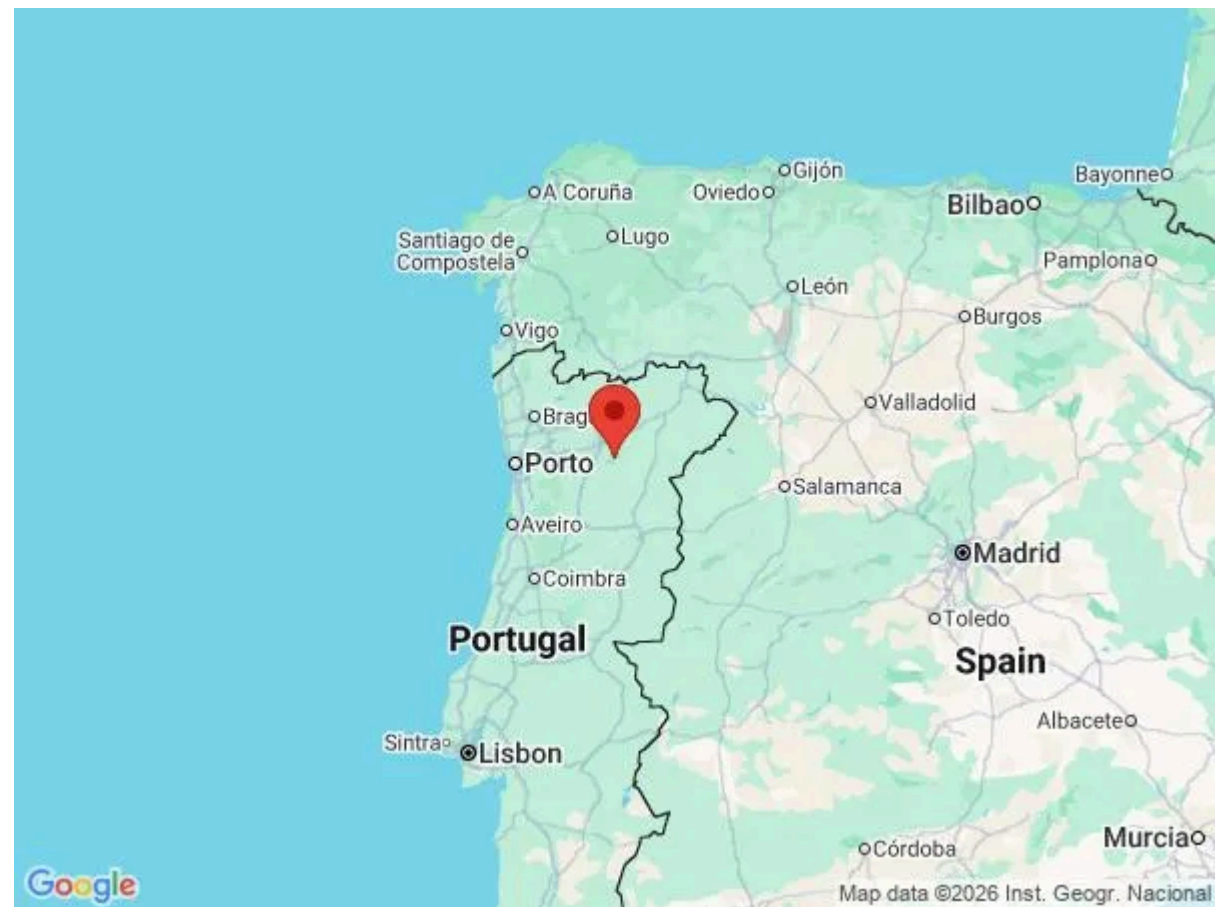
Highland Douro Escape sits in an elevated position within Portugal's Douro Valley, near Vila Real, offering direct access to one of the country's most iconic wine regions. Surrounded by terraced vineyards and olive groves, this is a landscape shaped by centuries of winemaking, where winding roads lead to traditional quintas and renowned wine estates.

The nearby village of Pinhão, around a 15-minute drive away, is a focal point of the region, known for its riverside setting, train station azulejo tiles, and access to Douro River cruises. Guests can enjoy guided wine tastings, private boat trips or scenic drives through the valley, with viewpoints and picnic spots along the way.

For a change of pace, Vila Real can be reached in under an hour, offering restaurants, shops and cultural highlights. Porto International Airport is just under two hours away, making this a well-connected yet distinctly rural retreat.

Local Amenities

| | |
|--------------------|-------------------------------------|
| Nearest Airport | Porto Airport (132km) |
| Nearest City | Porto (128km) |
| Nearest Golf | Vidago Golf Club (88km) |
| Nearest Restaurant | Pinhao (2km) |
| Nearest Tennis | Campo Tenis Torres (54km) |



What we love

- The elevated position offers uninterrupted views across the Douro Valley and river below
- The combination of spa facilities, games room and outdoor spaces makes it easy to relax and unwind without leaving the villa
- The separate vineyard cabin adds flexibility and a sense of privacy for larger groups

What you should know...

- The villa is set high in the valley, accessed via winding roads - arranging a driver is recommended.
- Due to the elevated setting, open grounds and stairs, young children will need close supervision.

Terms & Conditions

- **Security deposit:** €1,730 charged to client's credit card by Oliver's Travels as a pre-authorisation at least 2 weeks prior to arrival and refunded two weeks after departure, subject to full inspection.
- **Arrival time:** 4.00 p.m.
- **Departure time:** 12.00 p.m.
- **Energy costs included?:** Included in rental price.
- **Linen & towels included?:** Included in rental price.
- **Pets welcome?:** Not allowed.
- **Other Ts and Cs:** A non-refundable 50% deposit is required to confirm a booking at this property (or full payment if booking within 12 weeks of departure).
- **Changeover day:** Flexible.
- **End of stay cleaning:** Standard changeover clean included in the price. Guests are required to leave the accommodation clean, tidy and in the same condition as on their arrival. Any extra cleaning, laundry, maintenance and/or rubbish disposal required will be charged against the security deposit.
- **Smoking Allowed?:** Not allowed.
- **Minimum stay:** 3 nights - all other durations on request.
- **Heating costs included?:** Included in rental price.
- **Tax:** Not applicable.