

Sweet Violet

Region: Heart Of England Sleeps: 8

Overview

At Sweet Violet, the layout is part of the experience. Designed as a sociable, design-led cabin set within Buttercup Estate, it rethinks how groups stay together, combining shared space with cleverly arranged sleeping nooks.

At its centre is a double-height living and dining area, where soft timber interiors and warm lighting create a space that feels both relaxed and intentional. The open-plan layout encourages time spent together, whether that's long, shared meals, board games in the evening or simply settling into the rhythm of the day.

Four built-in sleeping nooks are tucked into the structure — two on the ground floor and two on the mezzanine above, each with a double bed and acoustic-lined curtains. This creates a flexible setup that feels informal yet thoughtfully designed, particularly well suited to families with older children or groups comfortable sharing a more open layout.

Outside, the pace slows further. A wood-fired hot tub and outdoor dining area offer space to unwind, while the surrounding 15-acre estate provides room to explore, walk and spend time outdoors.

Sweet Violet is ideal for those looking for something a little different. A stay that feels creative, sociable and connected to its setting, with the added benefit of optional experiences available across the wider Buttercup Estate.



Facilities

Historical Sites • Horse Riding • Wine Tasting • Walking/Hiking Paths • Walk to Village • Romantic • Chef/Cook Available • Quirky (Unique) • Pets on Request • Cots (Cribs) • Modern • <1hr to Airport • Parking Space • Walk to Restaurant • Wi-Fi/Internet • BBQ • Easy By Train • Coffee Machine • Barn • Hairdryer • Hot Tub • Dishwasher • Electric Car Charger • Home Cinema • Heating • Caretaker/Owner on Site • Kid-friendly museum • Kid-friendly excursions • Yoga Classes Available • Wine-Tasting Available • Playground nearby • Board games

Interior & Grounds

Ground Floor

- Open-plan living and dining space set within a double-height, design-led interior
- Fully equipped kitchen with oven, hob, fridge/freezer, microwave, toaster and kettle
- Dining table for shared meals and group gatherings
- Comfortable lounge area with sofa, armchairs, Sonos speakers and board games
- Two ground-floor sleeping nooks, each with a double bed and enclosed with acoustic-lined curtains for privacy
- Family bathroom with walk-in shower, WC and sink (with Aesop toiletries)

Mezzanine Level

- Two additional sleeping nooks accessed via central staircase. The nooks overlook the main living area below, creating a sociable, cabin-style layout. Each nook features a double bed, set within its own defined space with acoustic curtains.

Exterior Grounds

- Private outdoor dining area with barbecue
- Wood-fired hot tub set within the garden
- Set within a wider 15-acre estate with open countryside views
- Access to surrounding farmland and walking routes
- Private parking and EV charging available on request

Additional Facilities

- Wi-Fi
- Kitchen essentials (including tea, coffee and cleaning supplies)
- Hairdryer
- Pet-friendly (on request, additional charge)

The Film House

Add a private cinema experience to your stay with access to The Film House, a dedicated screening space set within a converted grain store. Designed for switching off completely, the room is wrapped in rich curtains with comfortable sofas and a large projector with Apple TV, so you can stream films, series, or your personal favourites. Sweet bags are included for the full cinema feel. Available as a three-hour private session, The Film House can be added to your booking for £25 per person.



Location & Local Information

Set within the village of Sutton Bonington in Leicestershire, surrounded by open farmland and wide, uninterrupted views that create a strong sense of space and privacy. With 15 acres of private fields on the doorstep, there's a natural freedom to the setting, whether heading out for a walk, gathering outdoors or simply taking in the landscape.

Life here moves at an easy pace. You can wander down to the local pub, explore the village's two historic churches, St. Michael's and St. Anne's or spend time discovering the surrounding countryside. The nearby Sutton Bonington Arboretum offers a more curated setting for walks and picnics, while the River Soar Trail provides miles of scenic routes through riverbanks and neighbouring villages.

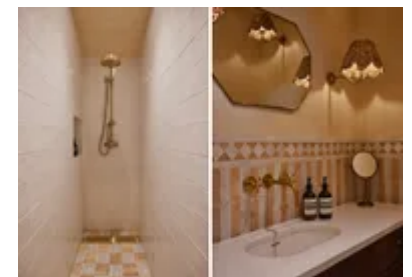
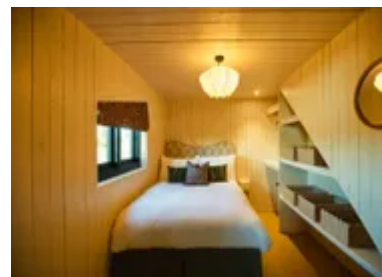
There's also a strong sense of local character. A monthly farmers' market brings together regional produce, from small-batch honey and local cheeses to wood-fired sourdough and handmade goods, while nearby experiences range from visits to National Trust estates such as Calke Abbey, Belton House and Wollaton Hall, to something more unexpected like an evening at Sherwood Observatory.

The setting works in harmony with the house's design-led approach, offering a calm, uncluttered backdrop that suits slower, sociable stays. Whether hosting long outdoor lunches, marking a special occasion or making full use of the estate's grounds, the space naturally lends itself to group living.

For exploring further afield, Loughborough is close by for shops and cafés, while Nottingham offers a more energetic contrast with its independent food scene, cultural venues and nightlife. Despite its rural feel, Buttercup Estate remains well connected, with East Midlands Airport nearby and rail links within easy reach.

Local Recommendations

For Coffee



- Ruthergan’s – 7 minutes
- Bryer’s, East Leake – 6 minutes
- Gallery 119 – 4 minutes
- Public, Loughborough – 19 minutes

For Walks

- Grace Dieu Priory – 18 minutes
- Rushcliffe Country Park – 17 minutes
- Sutton Bonington – 6 minutes (ideal for a stroll along Soar Lane and the River Soar)

For Exploring

- Old Curiosity Bookshop – 12 minutes
- Soar Trading Co – 6 minutes
- At Home, East Leake – 8 minutes

For Grown-Ups

- Saunahood – 25 minutes
- Eden Hall Day Spa – 35 minutes
- Little Love Club – 20 minutes
- Nottingham City Centre – 30 minutes

Local Amenities

Nearest Airport	East Midlands Airport (8.5 km)
Nearest Bar/Pub	The Star Inn (1.3 km)
Nearest Bar/Pub	The Bulls Head (5.3 km)
Nearest Bar/Pub	The Tap & Run (20.7 km)
Nearest Restaurant	Hammer and Pincers (11.8 km)
Nearest Restaurant	Hammer and Pincers (44.3 km)
Nearest Restaurant	Alchemilla (19.5 km)
Nearest Restaurant	Restaurant Sat Bains (15.9 km)
Nearest Restaurant	Kushi-Ya (19.6 km)

Nearest Shop	Co Op East Leake (5.4 km)
Nearest Town/City	Loughborough (11.6 km)
Nearest Train Station	East Midlands Parkway (5.7 km)
Nearest Village	Sutton Bonington (3.2 km)
Nearest Supermarket	Loughborough Town Centre (Tesco, Sainsbury's, M&S) (11.6 km)
Nearest Supermarket	Co-Op Kegworth (3.6 km)
Nearest Supermarket	Co-Op East Leake (5.4 km)
Nearest Supermarket	The Shepshed Farm Shop (12.1 km)
Nearest Supermarket	Dog & Jones (3.7 km)

What we love

- The hot tub, offering a simple way to unwind after a day outdoors
- The unique sleeping nook layout, offering a sociable yet flexible setup for groups. The double-height living space that brings everyone together

What you should know...

- Bedrooms are arranged as sleeping nooks rather than fully enclosed rooms
- The mezzanine level overlooks the main living space, so privacy is more limited
- The farm sits on the flight path for East Midlands Airport, so you may occasionally hear aircraft overhead.
- If you're planning to use the property for commercial photography or videography, a media fee applies.
- Events and parties can be arranged on request, subject to an additional fee.
- Don't forget to pack walking boots to make the most of the surrounding countryside.
- Pricing is based on occupancy, so please ensure your guest numbers are accurate when booking.
- Additional visitors not included in the booking are not permitted.
- Guests are asked to be mindful of the shared driveway and surrounding properties

Terms & Conditions

- **Security deposit:** £1000 charged to client's credit card by Oliver's Travels as a pre-authorisation at least 2 weeks prior to arrival and refunded two weeks after departure, subject to full inspection.
- **Arrival time:** From 3.00pm
- **Departure time:** Before 10.00am. Early check-in (from 1pm) and late check-out (until 12pm) are available for a small fee. Please email us if you'd like to arrange this.
- **Energy costs included?:** Yes
- **Linen & towels included?:** Yes
- **Pets welcome?:** Pets are allowed by prior agreement (maximum of 1 dogs), with a fee of £35 per pet, per stay
- **Other Ts and Cs:** 1 hot tub included in price
- **Smoking Allowed?:** Strictly no smoking
- **Other 2:** There are exterior security cameras on property
- **Heating costs included?:** Yes
- **Internet access?:** Yes
- Film House (Private Cinema) - Private cinema with projector screen and Apple TV. Available to add to your booking for £25 per person, subject to availability.