

Sithean House

Region: United Kingdom Sleeps: 10

Overview

Sithean House is a spacious Highland retreat, offering a peaceful base for groups looking to experience this part of the Scottish countryside. Surrounded by open landscapes and far-reaching views, the house combines traditional character with the comfort needed for a relaxed stay, whether you're visiting with family or friends.

Inside, the property is designed for sociable living, with generous communal areas that make it easy to gather together, alongside well-proportioned bedrooms that provide privacy when needed. Large windows draw in natural light and frame the changing scenery throughout the day, while the overall layout lends itself well to longer stays and special occasions.

Guests at Sithean House also benefit from access to the wider estate, known for its walking routes, wildlife, and opportunities to explore the outdoors right from your doorstep. Despite its rural setting, the house is within reach of Inverness, making day trips, dining out, and transport connections straightforward.

With its combination of space, setting, and access to the Highlands, Sithean House works particularly well for those looking to slow the pace and spend quality time together in a memorable location.

Facilities

Cycling • Golf Nearby • Historical Sites • Canoeing/Kayaking • Horse Riding • Walking/Hiking Paths • Pets on Request • Instagrammable • Cottage • Heritage Collection • Parking Space • Wi-Fi/Internet • BBQ • Rural Location • Washing Machine • Outstanding Landscapes • Coffee Machine • Outdoor Pursuit & Activities • TV • Dishwasher • Smart TV • Working Fireplace/Woodburner



Interior & Grounds

Ground Floor

- Drawing room with log-burning fireplace, comfortable seating, and views across the Highland landscape
- Study/snug with log stove and Smart TV
- Family TV room with large Smart TV and board games
- Spacious handcrafted kitchen with large island, six-ring electric range, and double Belfast sink
- Dining room with statement antler chandelier
- Pantry
- Utility room
- Boot room
- Guest W/C

First Floor

- Bedroom One with king-size bed and en-suite bathroom
- Bedroom Two with king-size bed and en-suite bathroom
- Bedroom Three with king-size bed
- Bedroom Four with king-size bed
- Bedroom Five with king-size bed
- Bedroom Six with twin beds
- Bedroom Seven with twin beds
- Shared family bathroom
- Separate W/C on the middle landing

Exterior Grounds

- Enclosed grounds with stone wall and gated entrance
- Outdoor dining area for alfresco meals and summer BBQs
- Bench seating for morning coffee and countryside views
- Gravel driveway with ample parking
- Bike storage area
- Far-reaching views across the surrounding Highland landscape



Location & Local Information

Sithean House sits within, a private stretch of Highland landscape just south of Inverness. The surrounding area is defined by rolling hills, open moorland, and quiet glens, offering a sense of space that's increasingly rare. It's a setting that naturally lends itself to walking, wildlife spotting, and simply spending time outdoors, with routes beginning right from the doorstep.

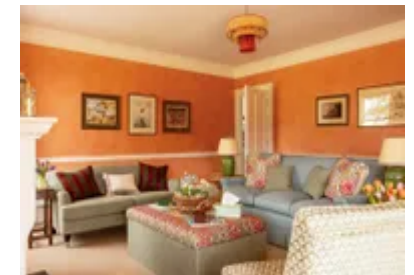
Despite its rural position, the house is within easy reach of Inverness, where you'll find a good selection of restaurants, shops, and transport links, including an airport and train station. This makes arrivals and day trips straightforward, whether you're heading into the city or exploring further afield.

The wider region offers plenty to discover, from the shores of Loch Ness to historic sites such as Culloden Battlefield and Cawdor Castle. There are also opportunities for fishing, cycling, and seasonal field sports nearby, depending on the time of year.

Sithean House strikes a balance between seclusion and accessibility, making it a strong base for exploring the Highlands at your own pace.

Local Amenities

Nearest Airport	Inverness Airport (Inverness Airport)
Nearest Bar/Pub	Whitebridge Hotel (17.4 km)
Nearest Beach	Dores beach (Lochness) (16.6 km)
Nearest Beach	Nairn (48.9 km)
Nearest City	Inverness (26.6 km)
Nearest Golf	Inverness Golf club (28.4 km)
Nearest Train Station	Inverness (30.5 km)
Nearest Supermarket	supermarket (23 km)



What we love

- Set within a private Highland estate, with direct access to walking routes and open countryside
- Generous living spaces that work well for group stays and shared meals
- Easy reach of Inverness for restaurants, shops, and transport connections

What you should know...

- The house is set within a rural estate, so a car is recommended for getting around and making the most of the surrounding area
- Mobile signal can be limited depending on your network, though this adds to the sense of switching off
- Access roads are typical of the Highlands and may be narrow in places
- The setting is peaceful and remote, so local amenities are a short drive rather than within walking distance

Terms & Conditions

- **Security deposit:** £500 charged to client's credit card by Oliver's Travels as a pre-authorisation at least 2 weeks prior to arrival and refunded two weeks after departure, subject to full inspection.
- **Arrival time:** After 4.00pm
- **Departure time:** After 10.00am
- **Energy costs included?:** Yes
- **Linen & towels included?:** Yes
- **Pets welcome?:** Yes
- **Changeover day:** Friday
- **Other 2:** CCTV outside only
- **Other 3:** Residents live on site
- **Minimum stay:** 3 night over a weekend
- **Heating costs included?:** Yes
- **Internet access?:** Yes