

# Bleu Marine

Region: France Sleeps: 8

## Overview

Just 700 metres from the lively harbour of Port Joinville, Bleu Marine captures the easy rhythm of island life on the beautiful Île d'Yeu. Behind its whitewashed façade and bright blue shutters, this former fisherman's cottage has been thoughtfully reimagined as a stylish coastal home where authentic character meets contemporary comfort. The atmosphere is warm and welcoming from the moment you arrive, with elegant interiors inspired by the colours and textures of the Atlantic coast.

Natural light fills the open-plan living space, creating an airy setting designed for relaxed days with family or friends. The cosy lounge invites quiet evenings after long walks along the shoreline, while the kitchen and dining area make gathering together effortless and sociable. Sleeping up to 8 guests, Bleu Marine features two comfortable double bedrooms, alongside a cheerful quad with bunk beds and a sofa bed, making it especially to families or a small group of friends seeking a laid back island escape.

Outside, a decked terrace with a jacuzzi, lounge area and outdoor dining space offers the perfect setting for leisurely breakfasts, sunset aperitifs and al-fresco meals on warm summer evenings. With beaches, local shops and restaurants all within walking distance, days here can be as active or as restful as you choose.

Port Joinville remains the vibrant heart of Île d'Yeu, where colourful fishing boats bob gently in the marina and waterfront cafés spill onto sunny terraces. Wander through the harbour's lively streets to discover fresh seafood restaurants, shops and bustling markets filled with local produce.

Beyond the port, Île d'Yeu reveals a landscape of rugged cliffs, pine forests and sandy coves, crisscrossed by scenic walking trails that showcase the island's unspoilt beauty. The island is reached via ferry from the French mainland and bike hire is a wonderful way to explore.

Whether spent exploring hidden beaches, enjoying waterside lunches or simply unwinding in the jacuzzi after a day by the ocean, a stay at Bleu Marine offers an introduction to one of the Atlantic coast's most treasured island escapes.

## Facilities

Watersports • Canoeing/Kayaking • Walk to Village • Ideal for Kids • Historical Sites • Cycling • Boat Trips • Walking/Hiking Paths • Fishing • Horse Riding • Ideal for Teens • Walk to Beach • Pets on Request • Cots (Cribs) • Beach Nearby • Instagrammable • Cottage • Walk to Restaurant • Parking Space • Wi-Fi/Internet • BBQ • Washing Machine • Outstanding Landscapes • Coffee Machine • Outdoor Pursuit & Activities • Hairdryer •



Tourist Towns & Villages • TV • Garage • Hot Tub • Tumble Dryer •  
Dishwasher • Microwave • Working Fireplace/Woodburner • Heating •  
Kid-friendly excursions • Water excursions/Boat trips • Transfers Available  
• No car required • Ideal for Babies & Toddlers • Baby bath • High Chair(s)

# Interior & Grounds

## Villa Interiors (110m2)

- Open-plan living and dining area with sofa, TV, pellet stove and dining table.
- Doors open to al-fresco dining terrace
- Partially open kitchen, well-equipped including coffee maker, kettle, toaster, induction hob, microwave and oven, fridge-freezer and dishwasher
- Dorm-style bedroom 1 with two bunk-beds (90x200cm x4) and sofa-bed
- Bedroom with double bed (160x200cm)
- Bedroom with double bed (160x200cm)
- Shower room with shower and hand basin
- Shower room with walk-in shower and hand basin
- WC

## Outside Grounds

- 6-person jacuzzi (open year round)
- Terrace with loungers, outdoor seating and al-fresco dining area
- Charcoal barbecue
- Garage



## Location & Local Information

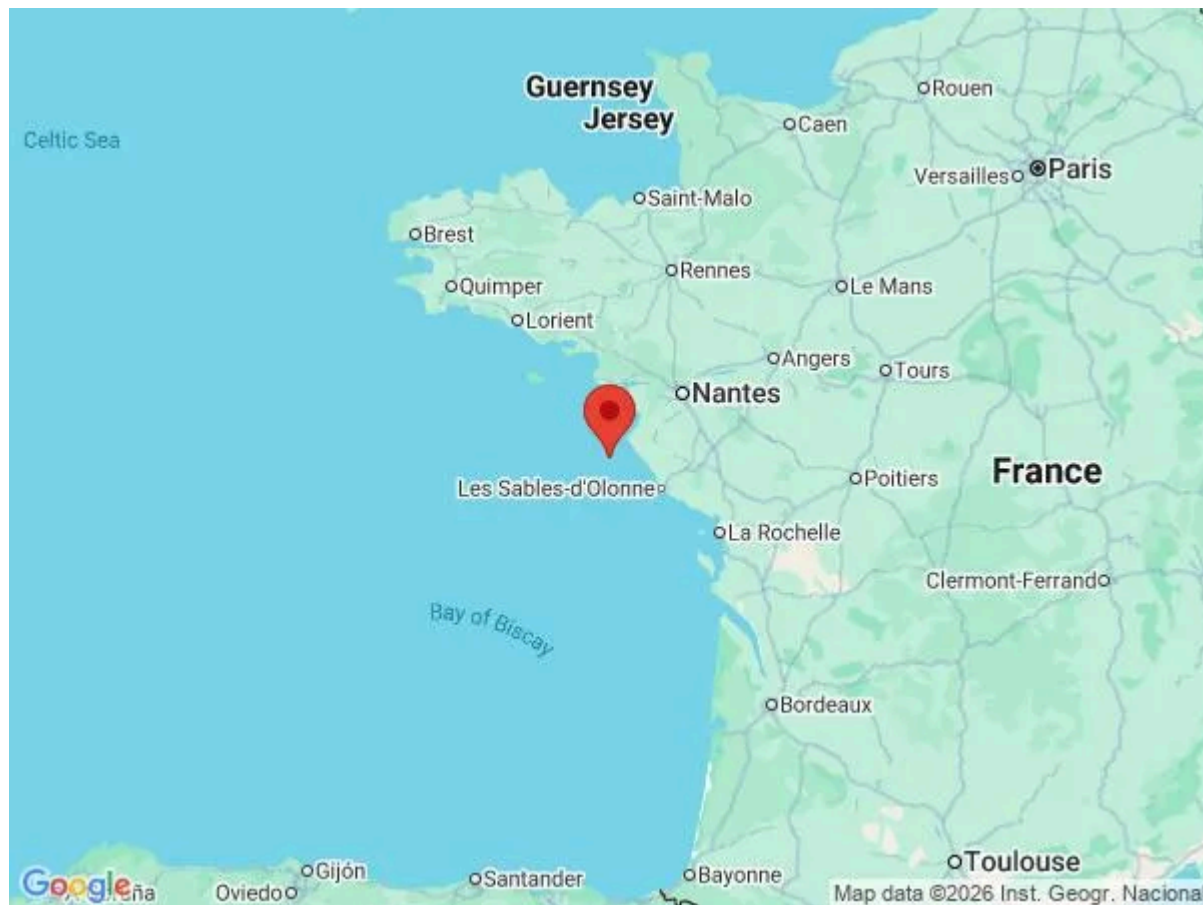
Reached by sea and instantly captivating, L'Île d'Yeu offers an altogether slower, more authentic rhythm of life on France's Atlantic coast. In a residential setting, Bleu Marine is located a short walk from the lively fishing port of Port-Joinville (700m). Seasonal passenger ferries connect the island from the mainland via Fromentine or Saint-Gilles-Croix-de-Vie.

Though only 10km long and 4km wide, L'Île d'Yeu is rich in natural beauty and heritage. Its rugged coastline, shaped by Atlantic waves, reveals dramatic cliffs, sheltered coves and pretty beaches perfect for early morning swims or sunset walks. Port-Joinville (700m) is the island's bustling hub, where fishing boats line the harbour and cafés spill onto the waterfront, while Saint-Sauveur (4km), the island's ancient capital, enchants with its more traditional character and whitewashed houses.

Outdoor enthusiasts will find endless ways to explore this unspoilt island. Hiking is especially rewarding here, with 72km of marked trails weaving through coastal landscapes and inland scenery. The celebrated GR80 coastal path, alongside five smaller walking routes known as the "Sentes", allows visitors to discover hidden corners of the island at their own pace. Cycling is equally popular thanks to the island's peaceful atmosphere and manageable size, making it easy to combine seaside strolls, scenic rides and leisurely lunches overlooking the ocean.

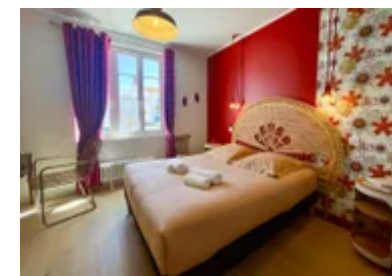
There is also a fascinating cultural side to L'Île d'Yeu. Prehistoric landmarks such as the mysterious Pierre Tremblante sit alongside remarkable monuments including the imposing Vieux Château, dramatically positioned above the sea.

Port de la Meule (4km), often considered the jewel of the island, is another must-visit with its picturesque inlet and traditional fishing boats. Between heritage sites, local museums and bustling market stalls filled with fresh produce and regional specialities, the island offers a wonderfully immersive taste of Atlantic island life.



## Local Amenities

Nearest Airport	<b>Nantes Atlantique Airport</b> (65km to Fromentine or 82km to Saint-Gilles-Croix-de-Vie, then ferry to Île d'Yeu)
Nearest Airport 2	<b>Rochelle Airport</b> (153km to Fromentine or 131km to Saint-Gilles-Croix-de-Vie, then ferry to Île d'Yeu)
Nearest Beach	<b>Plage de la Borgne</b> (850m)
Nearest Ferry Port	<b>Ferry terminal in Port-Joinville</b> (900m)



Nearest Ferry Port	<b>Saint-Malo</b> (243km to Fromentine or 258km to Saint-Gilles-Croix-de-Vie, then ferry to Île d'Yeu)
Nearest Restaurant	<b>Port-Joinville</b> (Within 700m)
Nearest Shop	<b>Port-Joinville</b> (Within 700m)
Nearest Town	<b>Port-Joinville</b> (700m to centre)
Nearest Supermarket	<b>Intermarché Super</b> (750m)

## What we love

- A charming former fisherman's cottage, beautifully reimagined with stylish interiors and contemporary comfort
- Just 700 metres from Port Joinville's lively harbour, with shops, restaurants, markets and waterfront cafés within easy reach.
- The decked terrace is a lovely spot for al-fresco dining, relaxed lounging and unwinding in the jacuzzi
- Explore Île d'Yeu by bike with gorgeous beaches, scenic trails and traditional villages to discover

## What you should know...

- This villa sleeps up to 8 guests across three bedrooms, including a quad dorm-style bedroom with two sets of bunk-beds – please see the "Layout" tab for details. There is also a sofa-bed available on request.
- You will need to book the ferry from the mainland in advance – the villa concierge can help make arrangements so please contact us at the time of booking.
- Cars are permitted on the island but most visitors choose to cycle. If you do wish to take a car, please ensure you arrange the car ferry transfers well in advance.

# Terms & Conditions

- **Security deposit:** €1000 charged to client's credit card by the owner as a pre-authorisation one month before arrival and refunded two weeks after departure, subject to full inspection.
- **Arrival time:** 4.00 p.m.
- **Departure time:** 10.00 a.m.
- **Energy costs included?:** Yes.
- **Linen & towels included?:** No, a mandatory fee of €10 per person payable directly to the owner's concierge agency via secure payment one month before arrival. This is for bed linen and bath towels.
- **Pets welcome?:** On request only and with prior agreement with the owner. If accepted, a pet supplement of €15 per pet will apply (payable locally).
- **Other Ts and Cs:** Weddings, stag/hen parties and any special events are not allowed.
- **Changeover day:** Flexible.
- **End of stay cleaning:** Extra €170, payable payable directly to the owner's concierge agency via secure payment before arrival. Guests are required to leave the accommodation clean, tidy and in the same condition as on their arrival. Any extra cleaning, laundry, maintenance and/or rubbish disposal required will be charged against the security deposit.
- **Smoking Allowed?:** Not allowed.
- **Other 2:** A cot and highchair can be requested in advance.
- **Other 3:** This villa sleeps up to 8 guests across three bedrooms, including a quad dorm-style bedroom with two sets of bunk-beds – please see the "Layout" tab for details. There is also a sofa-bed on request.
- **Minimum stay:** 7 nights in July and August. Usually 2 nights outside of these months, please enquire for more information.
- **Heating costs included?:** Yes.
- **Tax:** French Visitors Tax payable locally in cash (typically costs €1-€10 per adult per night - please enquire if exact amount is required).
- **Beach towels included?:** No.