

Lochside Hideaway

Region: Perthshire Sleeps: 21

Overview

Set within 20 acres of private grounds on the edge of the Cairngorms National Park, Lochside Hideaway offers an extraordinary Scottish escape, where the character of a beautifully restored Georgian shooting lodge meets the natural beauty of Highland Perthshire.

Ideal for extended family holidays or larger gatherings, Lochside Hideaway combines wonderful living spaces with exceptional comfort. Welcoming reception rooms provide inviting places to gather, from the drawing room with its crackling open fire to the relaxed sitting room and dedicated children's lounge with games and entertainment. The spacious kitchen, complete with a traditional Aga, creates the perfect setting for leisurely breakfasts and relaxed lunches whilst celebratory dinners can be hosted in the formal dining room – outside catering can be arranged.

Throughout the house, ten gorgeous bedrooms, many featuring super king-size zip link beds, are dressed in White Company linens, while seven bathrooms (five en suite) are stocked with toiletries, soft towels and bathrobes to enhance every stay.

Outside, the estate becomes a playground for all ages. Spend mornings rowing across the private trout loch or cast a line in the river for salmon fishing. Younger guests will delight in the superb play area, while adults can unwind in the hot tub or outdoor sauna, surrounded by the beauty of the Perthshire countryside. The large furnished patio provides an idyllic setting for al fresco dining, evening drinks and memorable moments with family and friends – look out an abundance of local wildlife including red squirrels.

Positioned between the Cairngorms National Park and the Angus Glens, Lochside Hideaway offers access to some of Scotland's most spectacular landscapes. Explore the walking routes around Mount Blair, discover the renowned Cateran Trail or venture into the vast wilderness of the Cairngorms for hiking, wildlife spotting and photography. The villages of Kirkmichael and Braemar offer traditional Highland charm, while Blairgowrie provides a wider choice of shops, cafés and restaurants. During winter, Glenshee Ski Centre, Scotland's largest ski area, is ideal for days on the slopes.

Whether planning a family celebration, a special occasion or simply a restorative break surrounded by nature, Lochside Hideaway offers exceptional facilities and an unforgettable setting on the edge of the Cairngorms National Park.



Facilities

Fishing • Weddings • Wellness • Skiing • Cycling • Historical Sites • Canoeing/Kayaking • Horse Riding • Walking/Hiking Paths • Romantic • Ideal for Kids • Pets on Request • Chef/Cook Available • Cots (Cribs) • Ideal for Teens • Has Discount • Special Offer • Maid Service Available • <1hr to Airport • Parking Space • Country Estate • Wi-Fi/Internet • Waterfront • Bath mat • Rural Location • Washing Machine • Coffee Machine • Outstanding Landscapes • Hairdryer • Outdoor Pursuit & Activities • Tourist Towns & Villages • TV • Boat Access • Laptop Friendly Workspace • Games Room • Indoor Games • Hot Tub • Tumble Dryer • Dishwasher • Microwave • AGA • Smart TV • Satellite TV • Sauna/Steam • Outdoor Games • Working Fireplace/Woodburner • Fire Pit • Heating • Caretaker/Owner on Site • Ruins • Climbing • Kid-friendly excursions • Pre-Stocked Fridge Available • Catering Available • Breakfast Available • Board games • Babysitting Available • Children's videos/DVDs • Children's books • Butler Available • Xbox/Playstation/Wii • Playground • Swings • Trampoline • Slide • Climbing frame • Meal delivery service • Croquet • Ideal for Babies & Toddlers • Footballs • Football net • Mini-football goals • Food blender • High Chair(s) • Fenced Grounds

Interior & Grounds

House Interiors

Ground Floor

- Entrance hall
- Drawing room with seating and open fire
- Sitting room with TV
- Family lounge with toys and entertainment
- Formal dining room with long table and chairs
- Split-level kitchen with dining area. Kitchen fully-equipped including Aga, oven, stove, microwave, electric grill, dishwasher, blender, espresso machine and coffee maker, fridge, freezer, toaster and kettle
- Boot room
- 2 x WCs

First Floor

- Bedroom with super king-size double bed, dressing room and en suite with bath and separate shower
- Bedroom with super king-size double bed (zip link, can be split as twin) and en suite with bath and separate shower
- Bedroom with super king-size double bed (zip link, can be split as twin)
- Bedroom with double bed
- Bedroom with single bed
- Family bathroom with bath and separate shower

Middle Floor

- Bedroom with super king-size double bed (zip link, can be split as twin) and en suite with shower
- Bedroom with super king-size double bed (zip link, can be split as twin) and single bed
- Family bathroom with bath and overhead shower
- Bunkbed bedroom with double bed (lower bunk) and single bed (upper bunk)

Second Floor

- Bedroom with super king-size double bed (zip link, can be split as twin) and en suite shower
- Bedroom with super king-size double bed (zip link, can be split as twin) and en suite shower

Outside Grounds

- Large furnished patio with outdoor lounge and shaded dining table for 21 guests
- Firepit
- Hot tub
- Lochside sauna and outdoor cold shower
- Croquet set
- Children's play area with swings, trampoline, climbing frame and see-saw
- Large lawn area for children's games
- Private loch
- 2 fly-rods available (for free brown trout fishing in loch)
- Boat house with rowing boat and equipment



- River access for salmon fishing (2-mile stretch, permits and ghillie can be arranged)
- Extensive private grounds (20 acres) with walks and paths
- Parking

Location & Local Information

Lochside Hideaway is a beautifully restored Georgian shooting lodge in Highland Perthshire, offering an idyllic rural escape on the edge of the Cairngorms National Park. Set in 20 acres of private grounds with a trout loch, boathouse and river for salmon fishing, this is an exceptional base for discovering one of Scotland's most captivating regions.

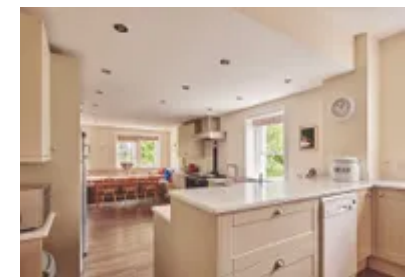
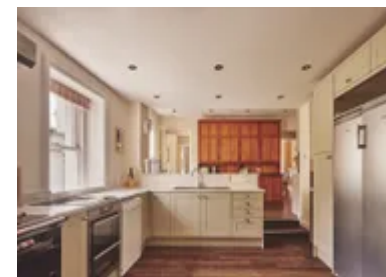
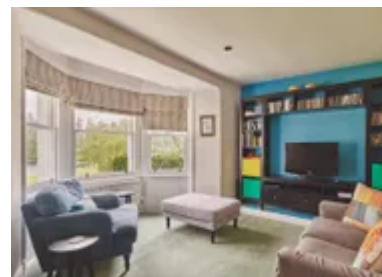
Beyond the estate, the historic village of Kirkmichael (12.5km) offers local amenities and a glimpse into traditional Highland life. A little further afield, the bustling town of Blairgowrie (23km) provides a wider selection of independent shops, cafés and restaurants, while the picturesque village of Braemar (32km), renowned for its royal connections and Highland character, is perfect for a day of exploration.

Outdoor enthusiasts will be spoiled for choice across the region. The dramatic landscapes of Mount Blair and the Angus Glens offer rewarding walking routes and breathtaking views, while the renowned Cateran Trail passes through some of the region's most beautiful scenery. The vast wilderness of the Cairngorms National Park is also within reach, offering endless opportunities for hiking, wildlife spotting and photography.

During the winter months, Glenshee Ski Centre (18km) provides Scotland's largest ski area, attracting visitors seeking skiing and snowboarding adventures. Whether you are drawn by outdoor pursuits, scenic beauty or the rich heritage of the Highlands, Lochside Hideaway enjoys a location that showcases the very best of rural Scotland.

Local Amenities

Nearest Airport	Dundee Airport (52km)
Nearest Airport 2	Edinburgh Airport (114km)
Nearest Airport 3	Aberdeen Airport (124km)
Nearest Bar/Pub	Various options (Within 10km)
Nearest City	Perth (48km)
Nearest Golf	Blairgowrie Golf Club (25km)
Nearest Restaurant	Various options (Within 10km)
Nearest Ski Resort	Glenshee Ski Centre (18km)



Nearest Town	Blairgowrie (23km)
Nearest Train Station	Perth train station (49km)
Nearest Village	Kirkmichael (12.5km)
Nearest Supermarket	Tesco Superstore, Blairgowrie (23km)

What we love

- A beautifully restored Georgian shooting lodge set within 20 acres of private grounds with its own trout loch and rowing boat
- Enjoy wonderful gathering spaces, from the open-fire drawing room and formal dining room to the brilliantly equipped kitchen with its Aga
- Youngsters will adore the vast outdoor play area whilst grown-ups may prefer the hot tub and sauna
- Explore the Cairngorms, Mount Blair and the Catevan Trail, with Glenshee Ski Centre nearby for winter adventures
- An ideal setting for extended family holidays, special celebrations or a romantic Highland wedding

What you should know...

- This beautiful house sleeps 20-21 guests across 10 bedrooms, including one with a bunk-bed – please see the "Layout" tab for full details.
- It's such a welcoming home for families – the outdoor play area is especially fantastic. Do note that open access to a loch and river means supervision is required at all times.
- The estate managers (a couple) live next door on the estate.

Terms & Conditions

- **Security deposit:** £600 charged to client's credit card by Oliver's Travels as a pre-authorisation at least 2 weeks prior to arrival and refunded two weeks after departure, subject to full inspection.
- **Arrival time:** 4:00 pm
- **Departure time:** 10:00 am. If check-out is a Sunday, late departure at 4:00 pm may be available on request.
- **Energy costs included?:** Yes, included in the rental price
- **Linen & towels included?:** Yes, included in the rental price
- **Pets welcome?:** A maximum of 2 dogs are welcome on request only and with prior agreement with the owner.
- **Changeover day:** Mondays and Fridays
- **End of stay cleaning:** Standard changeover clean included in the price. Guests are required to leave the accommodation clean, tidy and in the same condition as on their arrival. Any extra cleaning, laundry, maintenance and/or rubbish disposal required will be charged against the security deposit.
- **Minimum stay:** 2 nights during of peak seasons, 3 nights during peak seasons
- **Heating costs included?:** Yes, included in the rental price
- **Pool towels included?:** Yes, pool/hot tub towels are provided
- **Stag & Hen Do Allowed? :** Stag and hen dos may be accepted on request, and may be subject to additional costs