

Argall House

Region: North Wales **Sleeps:** 8

Overview

Argall House is a beautifully renovated coach house, which sits in the grounds of an astonishing stately manor house, Jacobean Manor which Oliver's Travels also features. The estate is absolutely magnificent and vast at one hundred acres. Guests staying at Argall House enjoy complete privacy with the benefit of their own private walled garden. The renovation is absolutely spectacular with as astonishing triple height atrium which can be used for weddings and special occasions. The atrium is licensed to hold civil ceremonies and can be set up for one hundred guests. Argall House enjoys four gorgeous bedroom suites, sleeping up to eight guests. If you are celebrating a special occasion, both properties can be taken, sleeping up to twenty two guests in total.

The estate is located in Flintshire in north east Wales with Cheshire to the east, Denbighshire to the West and Chester within easy reach. The area is rich in history and culture with King Edward I ordering work to begin on Flint Castle in 1276, a site of fierce battles between the Celts and Romans, British and Saxons, and Welsh and Normans. Hawarden enjoys two castles, one the home of William Gladstone, four times British Prime Minister. Other notable attractions in this wonderfully scenic area are Ewloe Castle, Bailey Hill in Mold and Point of Ayr lighthouse. Mold is a bustling market town famous for its theatre, markets and June carnival and surrounded by an Area of Outstanding Natural Beauty. The highest peak in the Clwydian Range boasts stunning views of six counties. The nearby Snowdonia National Park offers sensational, rugged scenery, waterfalls and hiking trails to the top of Mount Snowdon. Guests staying at Argall House enjoy an endless list of castles and stately homes to visit and the young are spoilt with many exciting, family friendly attractions.



Whilst retaining attractive ancient features such as exposed beams, Argall House is bang up to date with gorgeous, contemporary bathrooms and two stylish kitchens. The atrium is drowned in natural light, a cavernous space full of atmosphere and boasting a gabled roof and giant glass doors that lead to the private walled garden. Argall House is warm and toasty with central heating, underfloor heating and a welcome log burning fire in the lounge. The lounge is the perfect spot to relax after a mountain walk or a day enjoying views along the Wales Coast path. Modern sofas and chairs sit around the fire where you can enjoy glasses of your favourite tipple while planning the next day's activities. The house offers two kitchens, both equipped with the very best of appliances. The large yellow kitchen in the West Wing is fabulous with a large range cooker, an American style fridge freezer and a huge island. There is a handy utility room next door with a second dishwasher, microwave and laundry facilities. The kitchen is connected to a beautiful dining room for all guests. There is a smaller kitchen in the East Wing, ideal for guests staying in the East Wing rooms and wanting to make an early morning cup of coffee or a late night snack.

Argall House boasts four generous sized bedrooms, with beds beautifully dressed with luxurious Italian Frette linen, exquisite throws and scatter cushions and gorgeous duck feather pillows and duvets. The bedrooms are accessed from opposite ends of the atrium making Argall House ideal for two families or a multi-generational family. The bedrooms are all on the first floor with lovely round windows offering delightful garden and estate views. Two bedrooms are located in the West Wing up a stone staircase, one overlooking the walled garden and the other with views to the front. Both bedrooms offer an exquisite super kingsize zip and link beds which can be arranged as twins on request. The ensuite bathrooms come with contemporary fittings and luxury White Company toiletries. The East Wing is home to the final two bedrooms which are reached via an oak staircase from the lounge. Again they offer superbly comfortable super kingsize zip and link beds for flexible sleeping arrangements and exquisite linens. They share a stunning, immaculate bathroom.

Outside, guests enjoy their beautiful walled garden and smart garden furniture. It is an idyllic spot where you can enjoy alfresco dining and can even have a marquee set up on the lawn for a wedding or special event.

Guests staying at Argall House can enjoy wonderful catering arrangements including freshly prepared frozen ready meals for lunches based on local and seasonal ingredients, picnic lunches or full fine dining for events. The housekeeper is happy to take delivery of any online shopping orders on the morning of your arrival. There are many activities available at the property and in the grounds including croquet, table tennis, clay pigeon shooting with training given, falconry displays, archery, strolls through the estate and much more. There is a recommended therapist available for in-room massage and holistic treatments.

Facilities

Ideal for Xmas/NY • Weddings • DVD • Cots (Cribs) • Rural Location • Quirky (Unique) • Modern • Ideal for Babies & Toddlers • Pets on Request • <1hr to Airport • Heating • Tourist Towns & Villages

Interior & Grounds

Ground Floor

- Large central atrium with 2 large sofas for entertaining
- Sitting room with log burner, TV and 2 further large sofas
- Dining room with seating for 8
- Fully equipped kitchen includes 6 burner gas hob and large electric oven, american fridge freezer, dishwasher and kitchen/breakfast bar to seat 4
- Utility room
- Cloakroom
- Second kitchen with electric oven and hob, and small under-counter fridge, dishwasher

First Floor

- Bedroom with super-king bed and en-suite bathroom (*can be set up with twin beds on request*)
- Bedroom with super-king bed and en-suite bathroom (*can be set up with twin beds on request*)
- Bedroom with super-king bed (*can be set up with twin beds on request*)
- Bedroom with super-king bed (*can be set up with twin beds on request*)
- Family bathroom

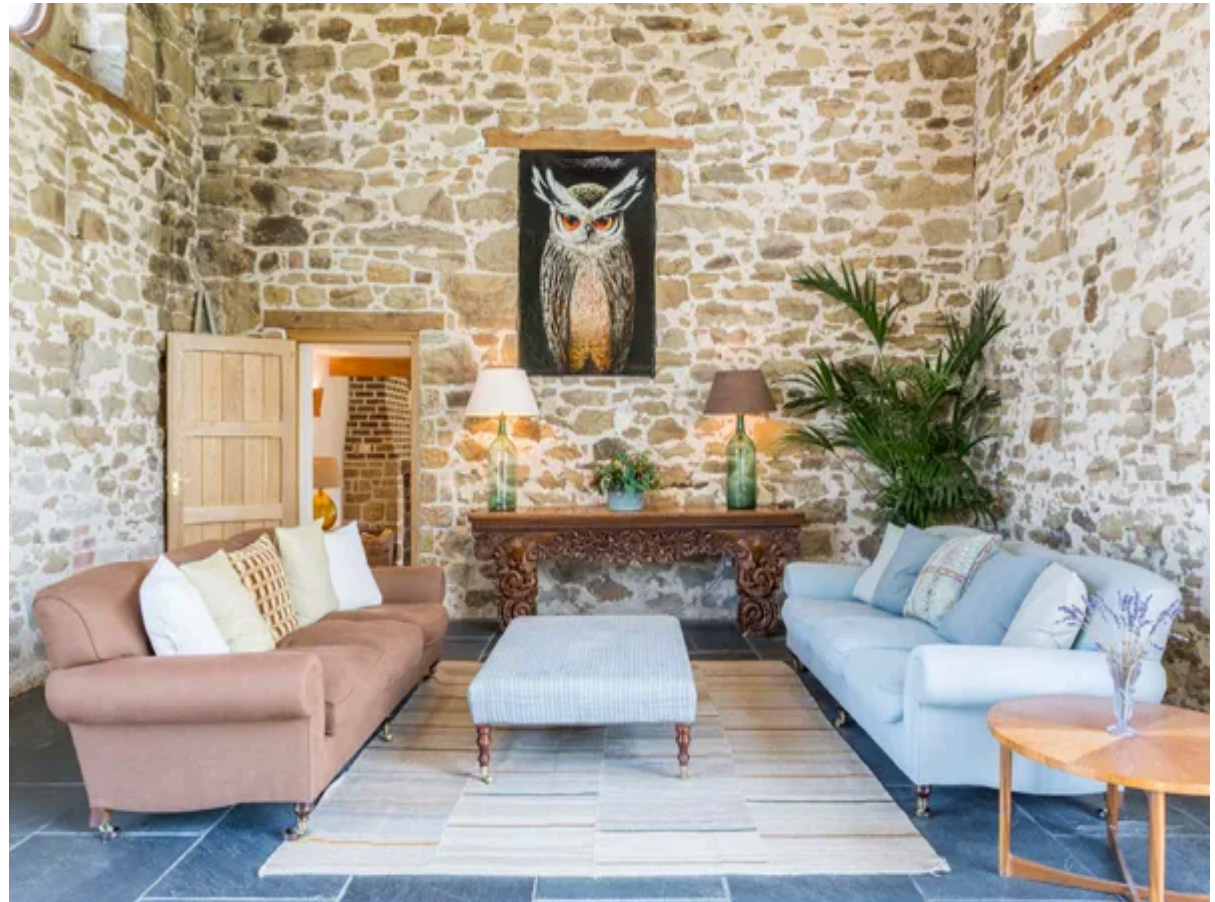
Exterior Grounds

- Private walled garden
- Barbecue
- Table tennis

Additional Facilities

- Wi-Fi
- TV
- Washing machine & dryer
- Travel cot & highchair available on request
- Parking

** The first floor is accessed via separate staircases from opposite ends of the Atrium - ideal for two families sharing. The first two bedrooms are situated in the West wing of the Coach House and are approached via the stone staircase from the central atrium. The third and fourth bedrooms are located in the East wing of The Coach House and are approached via the oak staircase from the sitting room. They share a family bathroom.*



Location & Local Information

Argall House enjoys a fabulous countryside location in the country of Flintshire, an area rich in so many ways. With a distinctive heritage, it offers incredible landmarks and the most incredible scenery. Flint market can be dated back to 1278 and remains a popular attraction in this pretty market town. The ruins of Flint Castle built by Edward I are still worth visiting. The well of St Winefride's in Holywell has been visited by pilgrims since the seventh century. It gained a reputation as the 'Lourdes of Wales'. In Hawarden, St Deiniol's Library is recognised as Britain's finest library, having been founded by William Gladstone. Mold is another delight with its street markets on Wednesdays and Saturdays and its Theatre Clywd. The famous theatre was opened by Her Majesty the Queen in 1976 and remains Wales' major drama producing operation.

Anglesey is an hour and a quarter's drive from Argall House via the North Wales Expressway. Here you will find spectacular landscapes, unspoilt coastline and picturesque villages and towns. There are scenic walks along the coastal path, fantastic water based activities and excellent cycle paths. Rhyl, Prestatyn and Colwyn Bay are all brilliant for days by the sea. The Wales Coast path from Prestatyn to Colwyn is stunning. Children love the SeaQuarium and Welsh Mountain Zoo at Rhyl as well as the town's miniature railway. The Victorian seaside resort of Llandudno at the foot of the Great Orme, is known for its beautiful North Shore Beach and its iconic pier.

Within the Snowdonia National Park, the mighty Mount Snowdon, is Wales' highest mountain. There are six recommended paths up the mountain, all of which are pretty tough and can take between six and eight hours to get to the top and back. Alternatively, visitors can take a train up to enjoy breathtaking views of the lakes, waterfalls and peaks.

The Roman town of Chester is within easy reach with its magnificent gardens constructed in 1949 just outside the city walls near the Newgate and Roman Amphitheatre. The



garden project formed part of Chester's contribution to the 1951 Festival of Britain. To provide access to the gorgeous River Dee, the gardens were remodelled in 2000. Chester Cathedral was founded as a Benedictine abbey in 1092. It was rebuilt from around 1250 in Gothic style, a process that took roughly 275 years. Chester Racecourse is known as the Roodee, the oldest racecourse still in use in England. With racing at Chester dating back to the sixteenth century, visitors enjoy many fixtures including the Boodles May Festival. Chester's Roman Ampitheatre is the largest Roman ampitheatre in the UK.

The National Trust's Erdigg Hall is a popular visit, fourteen miles from the house. It is a fabulous stately home originally designed in 1683. Its walled garden is stunning with rare fruit trees, a canal, a pond and its collection of ivy. Another of the National Trust's properties, Bodnant Gardens, is also worth a visit. The gardens span eighty acres with Italianate terraces, colourful shrub borders from around the world, a gorgeous waterfall, the Winter Garden, Old Park Meadow, a riverside garden and the Dell.

Golfers and horse racing enthusiasts are delighted by the courses and Aintree being close by. Aintree is the home of the Grand National, one of the most difficult courses to complete with sixteen steeplechase fences. In addition to the Grand National, Aintree also hosts the Topham Chase, the Fox Hunters' Chase, the Grand Sefton Handicap Chase and Becher Chase. Aintree is also used for motor racing and music events. There is a 9-hole golf course and driving range there too.

Local Amenities

Nearest Airport	Liverpool (51-60 km)
Nearest Ferry Port	Liverpool/Holyhead (51-60 km)
Nearest Train Station	Chester (21-25 km)
Nearest Village	Pontblyddyn (2 km)

Nearest Town/City	Mold (2 km)
Nearest Supermarket	Tesco (2 km)
Nearest Beach	Talacare (31-35 km)
Nearest Golf	Padeswood Golf Club (4 km)
Nearest Piste	Runcorn (21-25 km)

What we love

- Argall House has been sensationally renovated to provide exceptional living, entertaining and bedroom spaces
- The estate and surrounding countryside boasts some of the most breathtaking landscapes and seascapes in the UK. The cities of Chester and Liverpool are also within easy reach
- The central atrium is a light drenched wonder with triple height aspect and stunning garden views. It is the perfect intimate wedding spot

What you should know...

- The two West Wing bedrooms are reached via a stone staircase so you should take care of small children. Also please note that the other two bedrooms are located at the far end of the property
- Guests staying at Argall House enjoy their own enclosed walled garden but are welcome to stroll through the stunning estate enjoying the wildlife and scenery
- Please let us know if you would like the zip and link beds set up as singles

Terms & Conditions

- **Security deposit:** £500 due one week prior to arrival. The security deposit is paid directly to the owner and will be refunded one week after departure subject to damage inspection.
- **Arrival time:** 16:00 - 22:00
- **Departure time:** 10:00
- **Energy costs included?:** Yes, included in the rental price
- **Linen & towels included?:** Yes, included in the rental price
- **Pets welcome?:** A maximum of 1 well-behaved dog allowed on request at the time of booking for an additional charge of £25, per stay. Please keep the dog downstairs and off furnishings.
- **Changeover day:** Friday or Monday
- **End of stay cleaning available?:** Yes. However, guests are required to leave the accommodation clean, tidy and in the same condition as on their arrival.
- **Smoking Allowed?:** No smoking
- **Minimum stay:** Please note that there is a 3-night minimum stay, this may be increased across peak dates
- **Internet access?:** Yes, Wi-Fi is included in the rental price

Please note that this home is best suited for families. The property is strictly no stag, hen do's or single sex groups and the property owner reserves the right to cancel the booking and retain the security deposit if guests do not comply on arrival.