

Chalet Lune

Region: Espace Killy **Sleeps:** 12

Overview

Hit the slopes in style this winter with the gorgeously luxurious Chalet Lune, a five-star five-bedroom chalet. Peacefully set on the outskirts of Val d'Isère, Chalet Lune has a truly enviable location within the resort. Set on the prestigious Les Carats estate, Chalet Lune is only accessible to residents via a private lift and security gate to offer total privacy.

Gorgeous Chalet Lune has been designed to receive the perfect balance of rustic charm and elegance without having to sacrifice your modern luxuries and comforts. Filled with large spaces dressed in simple but tasteful decor, Chalet Lune is a beautiful traditional chalet with stunning exposed wood and baked clay features. From your windows, you'll enjoy stunning views of pine woods and Alpine vistas.

Your main living room features comfortable chic furnishings gathered around a roaring fire while additional comfy armchairs point towards the huge windows overlooking Val d'Isère below. A secondary lounge is located to the rear of the dining area, creating a lovely vibrant social space focused on good food and good company.

Your five bedrooms have been styled individually, giving each room a unique character, while retaining the charm and feel of a traditional lodge break. Each room has a flat-screen TV for relaxing and unwinding as well as access to a private en-suite bathroom.

To truly relax and shake off the aches of a hard day's skiing, Chalet Lune also features a modern Scandinavian-style sauna and a Turkish Hammam. For wine lovers, Chalet Lune has a well-stocked wine cellar filled with a fantastic selection of French wines and champagnes for your enjoyment.

Inside, Chalet Lune has been designed to give you a truly luxurious ski escape this winter. Before you arrive, your chalet manager will arrange for the set-up of your ski passes as well as booking ski lessons for any beginners or experienced skiers looking to improve their skills. Your chalet manager will also arrange any airport transfers you require and for your grocery shopping to be done in advance of your arrival if you let them know prior to your arrival. Alongside the chalet manager, you'll also have a dedicated host who is on hand to support you throughout your stay.

The chalet is available year-round, but facilities, property and local amenities may vary depending upon season.

Winter | Ski Chalet

November - April / May



During winter, Chalet Lune transforms into a cosy haven for ski enthusiasts. Its prime location provides easy access to the slopes of Val d'Isère, with a private lift and security gate ensuring exclusivity and convenience. After exhilarating days on the slopes, guests can unwind by the roaring fire in the main living room, indulge in gourmet meals in the dining area, or relax in the Scandinavian-style sauna and Turkish Hammam. With ski passes pre-arranged and ski lessons available for all levels, Chalet Lune offers the perfect setting for an unforgettable ski vacation, complete with impeccable service and luxurious amenities.

Summer | Alpine Chalet

June - August

In the summer, Chalet Lune offers a serene retreat amidst the picturesque surroundings of Val d'Isère. Guests can bask in the tranquillity of the Alpine landscapes, explore scenic hiking trails, or partake in outdoor activities such as mountain biking and paragliding. The chalet's spacious interiors and outdoor terrace provide ample space for alfresco dining and relaxation, while the well-stocked wine cellar perfectly accompanies warm summer evenings. Whether seeking adventure or solace in nature, Chalet Lune caters to guests looking to experience the beauty and luxury of the French Alps year-round.

Facilities

Walk to Village • Ski Lift Nearby • Walk To Slopes • Wellness • Ski Chalet • Self-Catered • Skiing • Ski-In/Ski-Out • Ideal for Kids • Ideal for Teens • Maid Service Included • Chef/Cook Available • Special Offer • Has Discount • Wow Factor • Cots (Cribs) • All Bedrooms En-Suite • Walk to Restaurant • Wi-Fi/Internet • Lakes and Mountains • Summer Chalet • Outstanding Landscapes • Coffee Machine • Outdoor Pursuit & Activities • TV • Lift • DVD • Microwave • Safety Deposit Box • Sauna/Steam • Wine Cellar • Home Cinema • Working Fireplace/Woodburner • Heating • Catering Available • Babysitting Available • On-Site Concierge • Breakfast Included • Property host • High Chair(s)

Interior & Grounds

The Chalet

With 5 bedrooms and 5 bathrooms split over 4 floors, Chalet Lune can host a total of 12 guests.

Interior

- Large master bedroom with queen size bed, fireplace and en-suite bathroom with shower and bath
- Family bedroom with mezzanine level featuring a queen size bed, two single beds and an en-suite bathroom with bath and shower
- Bedroom with queen size bed and en-suite bathroom with bath and shower
- Bedroom with queen size bed and en-suite bathroom with bath and shower
- Bedroom with queen size bed with en-suite bathroom with bath and shower
- Kitchen
- Spacious dining room
- Living room with fireplace
- Home cinema
- Bar
- Library
- Balconies

Additional Facilities

- Steam Room/Hammam
- Extensive Wine Cellar
- Lift
- Ski Room with boot warmers
- Music System Digital
- Safe in all bedrooms
- Satellite LCD TV in each bedroom
- Home Cinema System
- Telephone and fax
- Television and DVD player
- Collection of DVD's, music and books
- WiFi
- Garage Parking



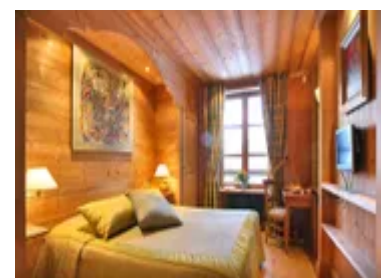
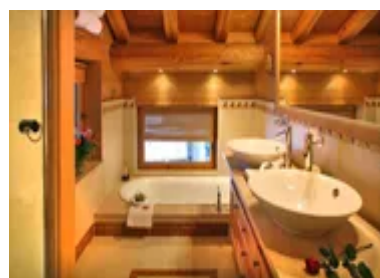
Location & Local Information

With the help of your on-site team, getting to and around Chalet Lune is easy as can be. With private parking on-site, you can choose to self-drive to the chalet from home if you wish. Or, you can fly to the nearest airport, kick back, relax and let the Chalet Lune team take care of your travel arrangements from there. For Val d'Isère, the easiest airport to get to is Geneva which is around a two and a half hour drive away from Chalet Lune.

Chalet Lune is a fantastic place to stay as you get to enjoy the benefits of a laid-back chalet escape without the hustle and bustle associated with a typical ski resort. You are, however, never far from the action should you wish to get involved. The centre of Val d'Isère is just a 20-minute walk away, where you can hit the shops, enjoy some apres-ski with your fellow skiers, or tuck into some delicious mountain delicacies.

While staying at Chalet Lune, your location is truly superb with the famous Belvedere slope just 50m from your door, making Chalet Lune the ideal ski-in, ski-out chalet. While visiting Val d'Isère, you can put your skills to the test with some of the best runs in the French Alps for advanced skiers.

All-Year Activities	Winter Activities	Summer Activities
<ul style="list-style-type: none"> - Skiing - Paragliding - Ice Skating - Mountaineering - Guided Tours - Hiking - Altitude Experiences - Horse Riding - Bowling - Local Markets - Aquatics - Fitness Courses 	<ul style="list-style-type: none"> - Ski Off Piste - Ski Touring - Pedestrian and snowshoer walks - Snowboarding - Cross Country Skiing - Ice Climbing - Dog Sledging - Heliski - Snowshoeing - Speed Riding - Ski Joering - Adaptive Skiing - MTB on snow - First tracks skiing - Bun J Ride - Ice Diving - Ice Floating - Snowtubing - Microlight - Evening in a yurt - Luge Snooc - Moonbikes - Snowmobiling 	<ul style="list-style-type: none"> - Trekking and Hiking - Mountain Bike / eBike - Trail Running - Rock Climbing - Road Cycling - Water Sports - Golf / Mini-golf - Adventure and Fun Parks - Tennis - Squash - Lake Swimming - Fishing - Paintballing - Trampolineing - Archery and rifle shooting - Acroland - Skateboarding - Dam Visits - White water swimming - Kayaking / Rafting - Via Ferreta - Canyoning - Quad and Buggy Driving



Local Amenities

Nearest Airport	Chambery (145 km)
Nearest Airport 2	Geneva (225 km)
Nearest Village	Val d'Isere (900 m)
Nearest Piste	Face (0 m)
Nearest Restaurant	La Table de l'Ours (600 m)
Nearest Bar/Pub	Sun Bar (650 m)
Nearest Supermarket	Sherpa (1 km)
Nearest Ski Lift	Bellevarde Express (0 m)
Nearest Ski Hire	Snowberry Slopeside (750 m)
Nearest Track	Face (0 m)
Nearest Lift	Bellevarde Express (0 m)
Nearest Equipment Hire	Intersport (800 m)
Nearest Golf	Golf du Lac Tignes (14.8 km)
Nearest Tennis	Tennis Adventure Val d'Isere (2.1 km)
Nearest Train Station	Bourg St Maurice (32 km)
Nearest Town	Bourg St Maurice (32.2 km)

What we love

- One of the most beautiful views of Val d'Isère
- A wonderfully exclusive chalet in an already exclusive location
- You can ski in and ski out
- Chalet Lune is wonderfully quiet, being set back from the centre of Val d'Isère on a private estate
- The property has a private elevator, allowing guests with mobility issues to get between floors easily

What you should know...

- It's an 8 min walk to town centre
- Chalet Lune is located in a quiet upmarket residential area, so it may not be suitable for guests looking for a lively chalet break
- Val d'Isère is a very popular resort - as a result, the area can become very busy during peak times

Terms & Conditions

- **Security deposit:** €4,000 charged to client's credit card before arrival and refunded two weeks after departure, subject to full inspection.
- **Arrival time:** Check-in 5.00 PM.
- **Departure time:** Check-out 10.00 AM.
- **Energy costs included?:** Yes.
- **Linen & towels included?:** Yes.
- **Pets welcome?:** Not allowed
- **Changeover day:** Normally Saturday, exceptions: Sunday 4th December 2022 Sunday 11th December 2022 Sunday 18th December 2022 Monday 26th December 2022 Monday 2nd January 2023 Monday 8th January 2023 Monday 15th January 2023
- **End of stay cleaning:** Standard changeover clean included in the price. Guests are required to leave the accommodation clean, tidy and in the same condition as on their arrival. Any extra cleaning, laundry, maintenance and/or rubbish disposal required will be charged against the security deposit.
- **Smoking Allowed?:** No smoking inside the chalet.
- **Minimum stay:** Normally 7 nights, exceptions: Check in on 18th December 2022 will be for 8 nights. Check in on 2nd January 2023 will be for 6 nights. Check in on 15th January 2023 will be for 6 nights Shorter stays may be considered at the start and end of the season, please enquire
- **Tax:** French Visitors Tax payable alongside balance (typically costs €1-€5 per adult per night- please enquire if exact amount is required).
- **Internet access?:** Wi-Fi connection included.

The chalet is available year-round, but facilities, property and local amenities may vary depending upon season.