

# Nissaki View

Region: Corfu    Sleeps: 14

---

## Overview

Nissaki View holds a fabulous location with peaceful and uninterrupted views over the sparkling Ionian Sea. The gorgeous Krouzeri Beach is within walking distance, while restaurants can also be found here. The main centre of Nissaki village where a wider range of amenities can be found is also only a short distance away however we recommend taking the 2-minute car journey to get here to avoid walking on any busy roads.

The accommodation is actually set out over two identical, side-by-side villas; this would be the perfect base for two families or a large group of friends holidaying together. The villas have been stylishly designed with modern interiors and comfortably sleep up to fourteen guests across eight spacious bedrooms. In each villa, in order to allow guests to make the most of the spectacular views, the entrance can be found on the first floor, on this level is a large living room area with access to a large balcony. Upstairs, on the second floor, is a double and a twin bedroom both with access to private balconies as well as a family bathroom. Going back downstairs, on the ground floor, is a second open-plan living room complete with dining facilities and a fully-equipped modern kitchen. Also on this level, is a second family bathroom and two double bedrooms with patio doors leading to the pool terrace area.

Outside, the grounds have been just as beautifully styled as the interiors. There are many bonuses of staying at Nissaki View: the two beautiful private pools, the perfect spots for soaking up the sunny, the views. There are plenty of areas for al fresco dining including the large dining table and snug sofa area.



## Facilities

Air-Con • Beach Nearby • Wi-Fi/Internet • Cots (Cribs) • DVD • Modern • Private Pool • Ideal for Kids • Ideal for Teens • Walk to Restaurant • <1hr to Airport • Hairdryer • TV • High Chair(s) • Outstanding Landscapes • Outdoor Pursuit & Activities • Tourist Towns & Villages • Historical Sites

# Interior & Grounds

The accommodation is set out over two identical, side-by-side villas. Please note that the maximum capacity is 14 guests.

## Villa 1

### Ground Floor/ Pool Level

- Living room with dining facilities
- Fully-equipped kitchen
- Bedroom with double bed, en-suite shower room and access to terrace
- Bedroom with double bed, en-suite shower room and access to terrace

### First Floor

- Cloakroom with WC and washbasin
- Open-plan living room with access to balcony

### Second Floor

- Bedroom with double bed and access to balcony
- Family bathroom
- Bedroom with twin beds and access to balcony

### Exterior Grounds

- Swimming pool (10m x 5m)
- Covered dining area
- Sunloungers

### Additional Facilities

- Wi-Fi
- Air conditioning
- Hairdryers
- Parking

## Villa 2

### Ground Floor/ Pool Level

- Living room with dining facilities
- Kitchen
- Bedroom with double bed, en-suite shower room and access to terrace
- Bedroom with double bed, en-suite shower room and access to terrace

### First Floor

- Cloakroom with WC and washbasin
- Open-plan living room with access to balcony

### Second Floor

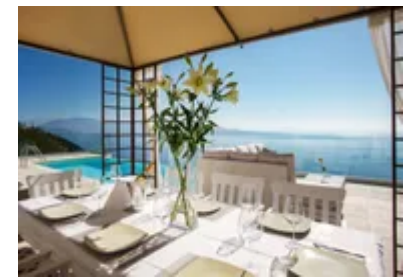
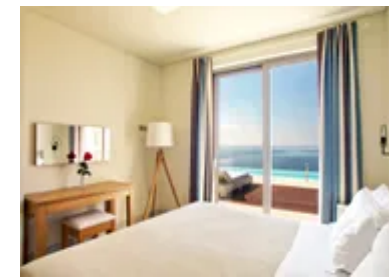
- Bedroom with double bed and access to balcony
- Family bathroom
- Bedroom with twin beds and access to balcony

### Exterior Grounds

- Swimming pool (10m x 5m)
- Covered dining area
- Sunloungers

### Additional Facilities

- Wi-Fi
- Air conditioning



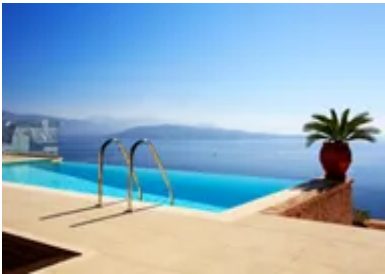
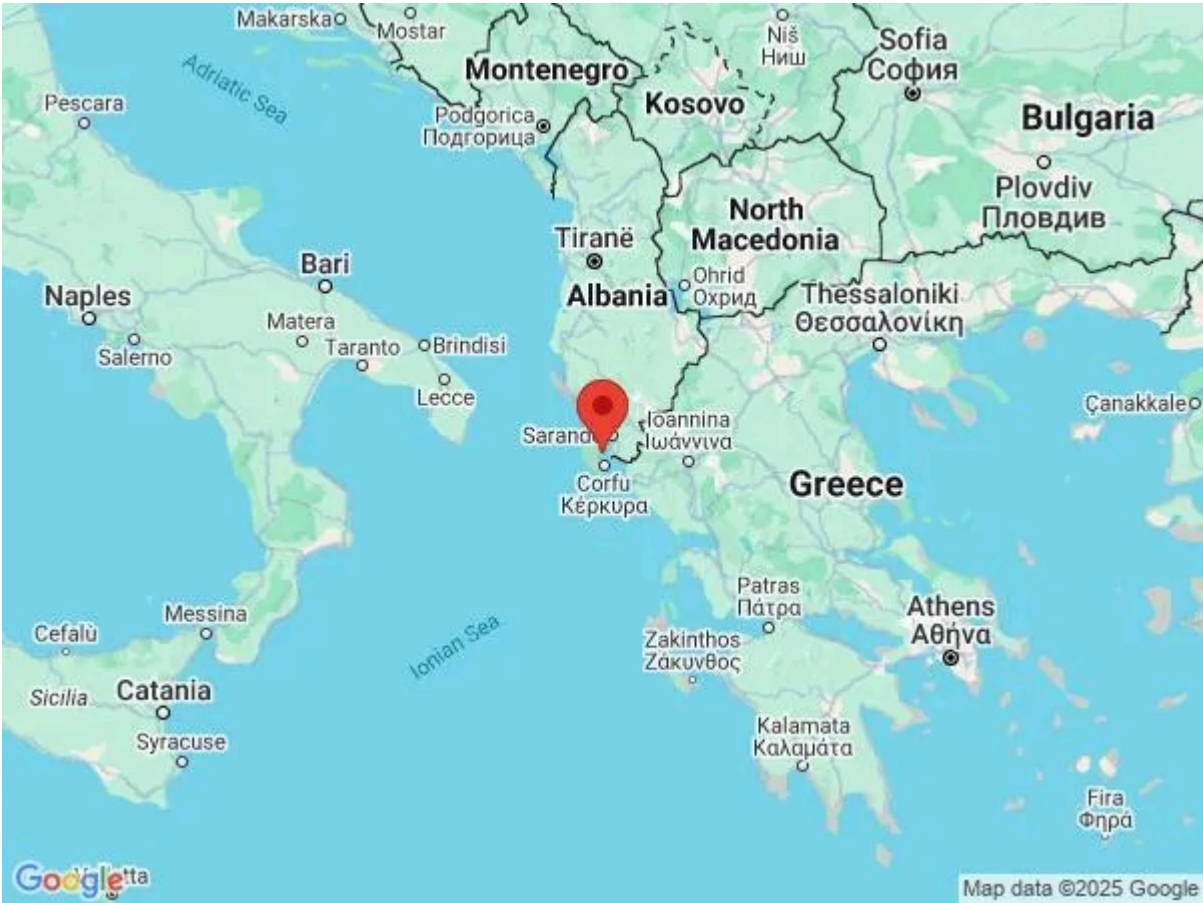
- Hairdryers
- Parking

# Location & Local Information

Nissaki View is located close to the fishing village of Nissaki on the north-east coastline of the beautiful island of Corfu. The villa is in a private and secluded location yet is within a 10-minute walk of the beach and restaurants. The main village of Nissaki is also only a very short distance away however due to the busy roads which we recommend taking a 2-minute car journey rather than walking.

## Local Amenities

Nearest Airport	Corfu International Airport (25km)
Nearest Village	Nissaki (1km)
Nearest Shop	Nissaki (1km)
Nearest Beach	Krouzeri Beach (750m)
Nearest Restaurant	Krouzeri Beach (750m)



## What we love

- The villas have an excellent location close to the centre of the village of Nissaki while being in walking distance of Krouzeri Beach
- Boasting two pools, there is plenty of room for the whole family to go for a splash!
- The views are truly spectacular - admire them while enjoying a refreshing beverage on the terrace!

## What you should know...

- While sharing an outside area, the accommodation being set out over two villas with separate external entrances may not suit everyone
- Despite having an excellent location, we recommend hiring a car to reach all amenities and further explore the area

# Terms & Conditions

- **Security deposit:** €1500 paid via bank transfer to the owner before arrival and refunded two weeks after departure, subject to full inspection.
- **Arrival time:** 4pm
- **Departure time:** 10am
- **Energy costs included?:** Yes, included in the rental price
- **Linen & towels included?:** Yes, included in the rental price
- **Pets welcome?:** No pets
- **Changeover day:** Saturday
- **End of stay cleaning available?:** Yes, included in the rental price
- **Smoking Allowed?:** No smoking
- **Minimum stay:** Please note that there is a 7-night minimum stay
- **Internet access?:** Yes, Wi-Fi is included in the rental price

The Greek government requires owners to collect a Tourist Climate Tax, your property manager will collect this in cash:

March-October €15 per night per unit

November-February €4 per night per unit