

Chateau Paradis

Region: Aquitaine Sleeps: 91

Overview

Surrounded by a wooded park of 22 acres, Château Paradis is a gorgeous holiday and wedding venue dating back to the 16th century and fully refurbished in 2016.

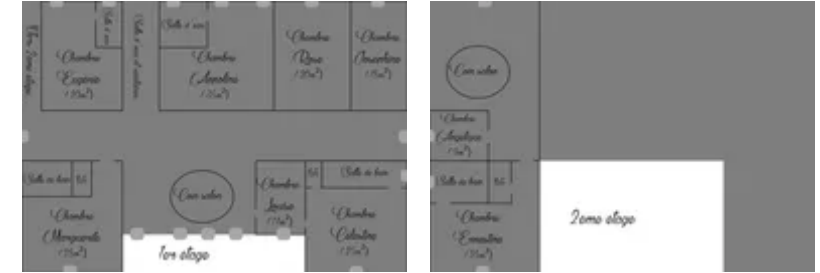
Conveniently located just a short drive from Poitiers and Limoges, it originally belonged to the Boiceau family. The Protestant lawyer, author of works of jurisprudence and writings in the Poitevin dialect, Jean Boiceau was born here in 1513. In the 19th century, the château was bought by the Du Verrier de Boulzat family, who built a modern castle near to the old building.

The main château occupies an area of 660m² nestled in the heart of a wooded park of 19 hectares and offers accommodation for up to 24 guests - with its additional apartment, two lodges, independent bedroom and cottage, the whole estate provides accommodation for up to 91 guests.

The spacious ground floor comprises of 2 luxury lounges, 2 dining rooms and a large kitchen. There is also a magnificent banquet hall, with adjoining professional kitchen, which has a capacity of up to 120 seated guests and 240 standing guests. In addition, the Pool Hall provides seating for up to 60 guests and can welcome up to 120 standing guests. On this level there is also an en-suite bedroom.

The remaining bedrooms and bathrooms are spread over the first and second floors, each of which boast a lounge.

Each room has been decorated with great care and tastefully furnished with antiques. The décor remains faithful to the 19th century but with an elegant and modern touch.



There are 10 bedrooms and 7 bathrooms. Three bedrooms are perfect for families wishing to sleep in proximity of the children. Bathrooms are all equipped with hairdryer, soap and towels.

In addition, the venue offers a large air-conditioned cottage, which can accommodate up to 44 guests in 12 bedrooms sleeping 2 to 5 people each with bunk-beds. There is also an adjoining 3-bedroom apartment, an independent ground floor bedroom and two pretty air-conditioned lodges, sleeping up to four guests each, bringing the total capacity of the estate to 91 guests.

The outdoor spaces are just as impressive; there is a brand new heated swimming pool and a stunning white stone terrace equipped with comfortable sunloungers and parasols. During your stay you can enjoy the quiet of this house, surrounded by a beautiful wooded park that will delight your guests. Outdoor games are also available and there is plenty of space for exercise. The Charentes River is easily reached from the property and the château can organise canoeing, kayaking, fishing and a lot more.

The caretakers live discreetly on site in a separate cottage and are always available to help you during your stay.

Facilities

Bookable For 2027 • Ideal for Parties • Ideal for Kids • Walking/Hiking Paths • Private Pool • Horse Riding • Wine Tasting • Recommended • Canoeing/Kayaking • Fishing • Air-Con • Golf Nearby • Chateaux & Castles • Weddings • Great Value • Ideal for Teens • Marquee Hire Permitted • Chef/Cook Available • Cots (Cribs) • Heated Pool • Outdoor Ceremony • Ground Floor Bed & Bath • Flexible Catering Options • Heritage Collection • Wi-Fi/Internet • Allow External Caterers • No Corkage • Rural Location • Indoor Reception Available • Outstanding Landscapes • Outdoor Pursuit & Activities • Tourist Towns & Villages • TV • Outdoor Games • Animal farm • Working Fireplace/Woodburner • Heating • Conference Facilities • Caretaker/Owner on Site • Babysitting Available • On-Site Concierge • Ideal for Babies & Toddlers • High Chair(s)

Interior & Grounds

- 1) Château only (24 guests)
- 2) Château and Apartment (35 guests)
- 3) Château and Lodges + Independent Bedroom (36 guests)
- 4) Château and Cottage (68 guests)
- 5) Whole Estate (91 guests)

Please note that other combinations for more than 24 guests (including the château) are also possible – please enquire for pricing.

Château Interiors (24 guests/10 bedrooms/7 bathrooms)

Ground Floor (300m2)

- Living room
- TV room
- 2 x dining rooms
- Kitchen, fully-equipped
- Office corner with Wi-Fi printer, video-projector (on request), table and chairs
- Bedroom (25m2) with double bed (180cm) and en suite bathroom
- Separate WC
- Banquet Hall with adjoining professional kitchen
- Pool Hall

First Floor (300m2)

- Bedroom (25m2) with double bed (200cm), en-suite bathroom (access via bedroom/salon with sofa-bed)
- Bedroom/Salon (15m2) with sofa bed (connects to above bedroom, can be made up as a bedroom or salon)
- Bedroom (15m2) with double (160cm) and single bed (under an alcove)
- Bedroom (20m2) with 2 single beds
- Bedroom (35m2) with 2 singles and 1 double bed, en-suite shower room
- Bedroom (20m2) with double bed (180cm) and en-suite shower room
- Bedroom (25m2) with double bed (200cm) and en-suite bathroom
- Shower room
- Living area

Second Floor (60m2)

- Bedroom (9m2) with small double bed (140cm)
- Bedroom (25m2) with double (160cm) and single bed, en-suite bathroom and WC
- Small living area

Apartment Interiors (11 guests/3 bedrooms + sofa bed on landing/1 bathroom)

The apartment adjoins the cottage.

Ground Floor

- TV room
- Kitchen area



First Floor

- Sofa bed (on the landing)
- Bedroom with double bed
- Bedroom with two double beds
- Bedroom with three single beds
- Bathroom with bath and shower
- Separate WC

Lodges (x2) Interiors (8 guests/2 bedrooms/2 bathrooms)

- Air-conditioned bedroom with double bed (160cm) and double sofa-bed (140cm)
- Shower room and separate WC

Independent Bedroom (4 guests/1 bedroom/1 bathroom)

In same building as cottage/apartment, with its own entrance, and is suitable for guests with restricted mobility

- Bedroom with double bed (160cm) and double sofa-bed (140cm)
- Shower room and separate WC

Cottage Interiors (44 guests/12 bedrooms/4 shower rooms)

The cottage adjoins the apartment and offers dorm-style accommodation.

Ground Floor

- 4 x shower rooms
- 2 x WCs

First Floor

- 7 x bedrooms with double bed and single bed (1 x bunk-bed)
- 2 x bedrooms with four single beds (2 x bunk-beds)
- 2 x bedrooms with double bed and three single beds (2 x bunk-beds)
- Bedroom with two double beds and one single bed (1 x bunk-bed)

Château Outside Grounds

- Heated Swimming Pool (12x5m, depth: 1.1-1.8m)
- White stone pool terrace area
- Sun loungers and parasols
- Tables and chairs are available for outdoor catering
- Basic equipment for pool and lawn games
- 22 acres park

Location & Local Information

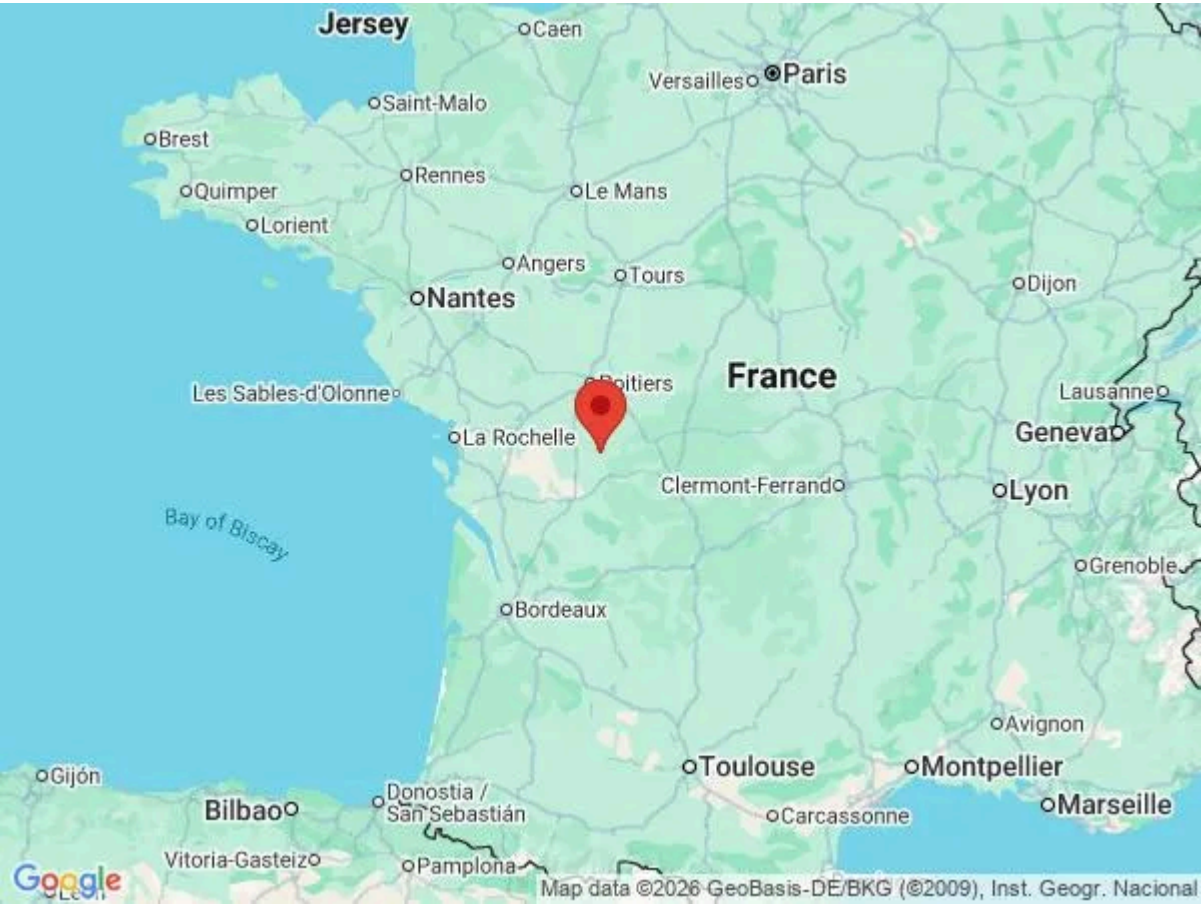
Château Paradis benefits from a strategic location in the heart of the beautiful and sunny Charente region, just about an hour away from Poitiers and Limoges. The closest town is Benest.

Local Activities

- Zoo
- Tennis
- Horseback riding
- Golfing
- Fishing
- Cognac Tour
- Vineyard Tour
- Farm tour
- Day Trips: famous château of the Loire Valley, Bordeaux, Cognac, Futuroscope theme park in Poitiers.

Local Amenities

Nearest Train Station	Ruffec / Potiers (20 min / 1 hour)
Nearest Airport	Poitiers / Limoges (1 h 10 min / 1h 10 min)
Nearest Beach	(2h30 min)
Nearest Village	Champagne Mouton (8km)



What we love

- Fabulous location in the sunny Vendee-et-Charente, with plenty of tourist attractions and entertaining activities within striking distance!
- With majestic banquet halls and a team of professional caterers, it is a great property for outdoor and indoor weddings.
- All rooms are warm and bright, have their own fireplace and have been fully restored in the purest respect for tradition.
- To the delight of children and adults alike, a brand-new heated pool and games are all available.

What you should know...

- The 24-person price is for the 10-bedroom château only, whilst the other prices include either the 12-bedroom cottage, adjoining 3-bedroom apartment and/or the independent bedroom and two lodges. Please see the 'Features' tab for full details on what is included for each price.
- Please note that other combinations for more than 24 guests (including the château) are also possible – please enquire for pricing.
- One of the bedrooms in the château can be used either as a salon or a bedroom with a sofa-bed, and some of the other beds that make up the total capacity on the estate are sofa beds. Please see the 'Features' tab for further details.
- Air-conditioning is only featured in the cottage and lodges, not the château or apartment.
- The airports of Poitiers and Limoges are just over an hour drive away. If you'd rather not hire a car, there are also good train connections from Paris.
- Car hire is strongly recommended to explore the surrounding area.

Terms & Conditions

- **Security deposit:** €4000 charged to client's credit card by the owner one month before arrival and refunded two weeks after departure, subject to full inspection.

- **Arrival time:** After 5.00 p.m. (flexible)

- **Departure time:** By 11.00 a.m. (flexible)

- **Energy costs included?:** Yes.

- **Linen & towels included?:** Yes.

- **Pets welcome?:** On request only and with prior agreement with the owner.

- **Other Ts and Cs:** The 24-person price is for the 10-bedroom château only, whilst the other prices include either the 12-bedroom cottage, adjoining 3-bedroom apartment and/or the independent bedroom and two lodges. Please see the 'Features' tab for full details on what is included for each price.

 Air-conditioning is only featured in the cottage and lodges, not the château or apartment.

 One of the bedrooms in the château can be used either as a salon or a bedroom with a sofa-bed, and some of the other beds that make up the total capacity are sofa beds. Please see the 'Features' tab for further details.

 There is an additional children's bed in one of the chateau bedrooms, if required (making the total capacity in the chateau 25 guests).

- **Changeover day:** Flexible.

- **End of stay cleaning available?:** Yes. This is a standard changeover clean, so guests are required to leave the accommodation clean, tidy and in the same condition as on their arrival. Any extra cleaning, laundry, maintenance and/or rubbish disposal required will be charged against the security deposit.

- **Smoking Allowed?:** Outside only.

- **Minimum stay:** 3 nights. Shorter stays of 1 or 2 nights are also possible on request and charged at the 3-nights advertised rates.

- **Heating costs included?:** No, €150/day if required.

- **Pool heating charge?:** No. Please note that like all heated pools, pool heating and water temperature are reliant on weather and outside temperatures.

- **Pool towels included?:** No. These can be provided at an extra cost.

- **Noise policy :** Music must take place in the reception room from 10 p.m. so as not to disturb the neighbors. Inside the reception room, however, there is no end time for the music. Of course, the noise level must not exceed the legal limit set out by the French local authorities.