

Chateau Du Chevalier and Annexes

Region: Brittany Sleeps: 35

Overview

For an unforgettable family holiday or fairytale wedding, book Château Du Chevalier, a magnificent 15th century castle in Brittany.

Beautifully located on a ridge overlooking a charming pastoral landscape, the estate comprises a stunning main château and three annexe buildings dating back to the 19th century and fully restored, allowing the estate to sleep up to 35 guests in total.

The 54 acres of grounds with spectacular views include three ponds, a heated outdoor swimming pool and a charming chapel. Enjoy outdoor pursuits like fishing and hunting, schedule a wine or cider tasting, play table football in one of the bedrooms and explore the region's historical sites. The château's dining room features an original fireplace, and the drawing rooms and bedrooms have wooden panelling and paintings from 18th century.

The Big Maison (6-8 guests) sits just 100m from the château and is close to the pool and the kitchen garden. The Little Maison (4 guests) enjoys a superb view over the old castle park and the chapel and is also just 25m from the pool. With two and four welcoming bedrooms respectively, both houses are particularly recommended for couples or families.

Another 6-8 guests can stay in the 2-bedroom cottage with its charmingly renovated interiors, dating back to the 18th century. Only 50m from the pool, admire characterful high ceilings, gigantic oak beams and large sliding doors opening to the patio and a large garden. All annexes have their own outdoor seating areas where you can enjoy relaxing evenings and enchanting views overlooking the park and valley.

Drive the short distance to the village of Combourg to see an impressive castle and town centre. You're also just over half an hour from Rennes' cultural sites or Brittany's wonderful beaches. Further afield, history buffs will want to visit Mont Saint-Michel and the incredible D-day beaches, whilst closer to home golfers have a choice of superb courses.

Not only is Brittany wonderful in the summer, it is also a great destination in spring when flowers are in full bloom. Likewise, autumn is the perfect season to gather around the fireplace and spend cosy afternoons in, not to mention December, which will take your breath away as the characteristic French morning mist settles like a lake in the valley, creating a spectacular scenery.

Please note that the 35-person rate is for the main château and its annexes, meaning you have exclusive use of the pool and grounds. Should you wish to book the château only (15 guests), please see the separate listing, Château Du Chevalier (<https://www.oliverstravels.com/france/brittany-the-atlantic-coast/brittany/chateau-du-chevalier/>). In this case, the annexes will be rented separately to other guests who share the estate and swimming pool with château guests.



Facilities

Sailing • Walking/Hiking Paths • Horse Riding • Watersports • Wine Tasting • Tennis Nearby • Fishing • Golf Nearby • Cycling • Boat Trips • Chateaux & Castles • Romantic • Ideal for Kids • Weddings • Ideal for Parties • Cots (Cribs) • Special Offer • Ideal for Teens • Great Value • Marquee Hire Permitted • Has Discount • Maid Service Available • Heated Pool • Chef/Cook Available • Pets on Request • Chapel on Site • Outdoor Ceremony • Ground Floor Bed & Bath • <1hr to Airport • Shared Pool • Pool Safety Feature • Heritage Collection • Wi-Fi/Internet • Rural Location • Washing Machine • Indoor Reception Available • Outstanding Landscapes • Outdoor Pursuit & Activities • Tourist Towns & Villages • Dishwasher • Outdoor Games • Table Football • Working Fireplace/Woodburner • Heating • Conference Facilities • Caretaker/Owner on Site • Zoo • Aquarium • Theme park • Wine-Tasting Available • Water park • Ideal for Babies & Toddlers • High Chair(s)

Interior & Grounds

1) Château + Annexes (Big Maison + Little Maison + Cottage): max 35 guests

Main Château Interiors (15 guests)

Ground Floor

- Two entrances (south and north) with hallway with mosaic flooring
- Dining room with a stunning 15th century fireplace and grand oak table seating up to 22
- 18th century drawing room and library with precious exhibit paintings and antique furniture
- 18th century drawing room with fireplace, precious exhibit paintings and antique furniture
- Fully equipped kitchen with dishwasher and washing machine
- Bedroom with double bed (140x200cm), table football and bathroom with shower and toilet

First Floor

- Bedroom (approx. 30m²) with park view, double bed (140x200cm), single bed (90x200cm), fireplace and bathroom with bath/shower and toilet
- Bedroom (approx. 18m²) with park view, two single beds (90x200cm), fireplace and vanity alcove
- Bedroom (approx. 18m²) with park view, two single beds (90x200cm) and fireplace
- Bathroom with shower and toilet
- Bedroom (approx. 30m²) with valley view, two single beds (90x200cm), fireplace and bathroom with shower and toilet
- Bedroom (approx. 30m²) with valley view, two single beds (90x200cm), fireplace and vanity alcove

Second Floor

- Tower bedroom (approx. 40m²) with valley view, two single beds (90x200cm), fireplace and bathroom with bath/shower and toilet

Annexes

Big Maison Interiors (140m²) – 6 guests plus 2 additional beds on request

Ground Floor (approx. 80m²)

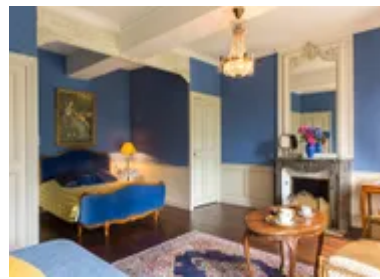
- Large kitchen, well-equipped including dishwasher and fridge-freezer
- Living area with sliding doors opening to castle park and patio

First Floor (approx. 60m²)

- Bedroom with twin beds (90x200cm) and castle park view
- Bedroom with twin beds (90x200cm) and castle park view
- Bedroom with twin beds (90x200cm) and pool view
- Bathroom with bathtub and toilet
- Bathroom with shower and toilet

Little Maison Interiors (approx. 60m²) - 4 guests

Ground Floor (approx. 30m²)



- Living room and kitchen, well-equipped including dishwasher, fridge and dining table. Doors open to patio and castle garden

First Floor (approx. 30m2)

- Bedroom with two single beds (90x200cm) and castle park view
- Bedroom with two single beds (80x190cm each) and pool view
- Bathroom with shower and toilet

Cottage Interiors (approx. 140m2) – 6 guests plus 2 additional beds on request

Ground Floor (approx. 90m2)

- Open-plan space with living area, dining area, fireplace and kitchen, well-equipped including fridge, freezer and dishwasher. Large open doors lead out to patio and large garden
- WC

First Floor (approx. 50m2)

- Bedroom with two single beds (90x200cm) and pool view
- Bedroom with two single beds (90x200cm) and country view
- Bedroom with two single beds (90x200cm)
- Balcony (overlooking living-dining area below)
- Bathroom with bathtub and two showers
- Separate WC

Outside Grounds (54 acres)

- Heated pool (12m x 5m), open approximately May to end-September (from 8.00 a.m. to 9.00 p.m.) within walled kitchen garden (with safety gate access)
- Barbecue area
- Outdoor furnishings
- Vast estate (54 acres) with three ponds, waterfalls, streams and walking trails
- Rowing boat (and fishing opportunities)
- Early 18th-century Chapel (approx. 100m2 with 10m-high ceiling and great acoustics)

The estate and swimming pool are only for exclusive use when both the chateau and annexes are booked (35-person rate). You can also book the chateau only for up to 15 guests, in which case you share the grounds and swimming pool with independent annexe guests - see the separate listing for Chateau du Chevalier. (<https://www.oliverstravels.com/france/brittany-the-atlantic-coast/brittany/chateau-du-chevalier/>)

Location & Local Information

Château Du Chevalier is ideally situated just 5.5km from the delightful village of Combourg, renowned for its impressive château and welcoming town centre. Within comfortable reach lies the cultural hub of Rennes (37km), while the expansive sandy shores of Cherrueix can be reached in around 30 minutes by car.

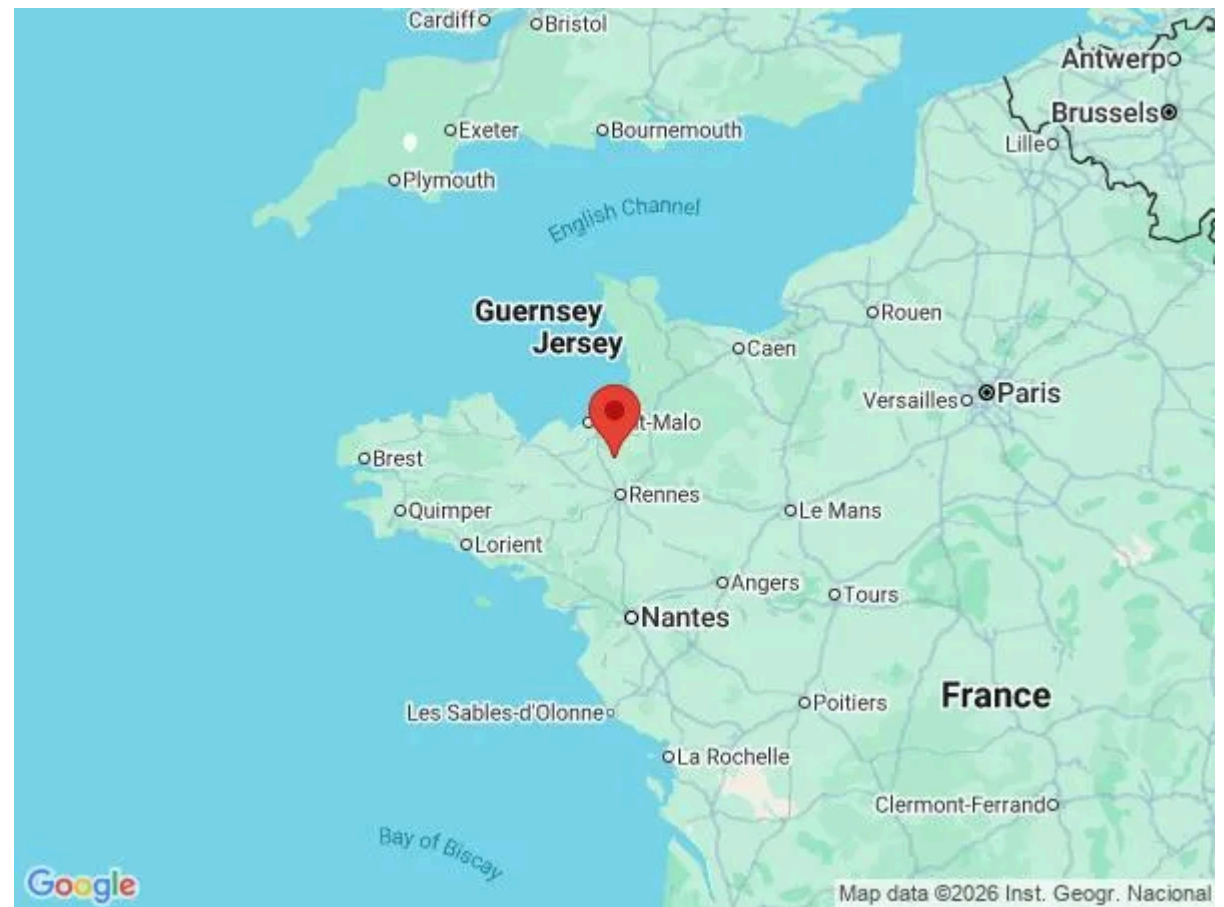
Travel is made easy thanks to the château's proximity to Saint-Malo's historic ferry terminal, approximately 45km away, and both Rennes and Dinard Airports, both a similar distance. Saint-Malo itself enchants visitors with its atmospheric walled city and offers regular ferry crossings to the Channel Islands.

A little further along the coast, Cancale (48km) beckons with its charming harbour and world-famous oysters – a must-visit for seafood aficionados who flock to its seafood restaurants. Golf enthusiasts are also spoilt for choice, with beautiful courses nearby such as Les Ormes (16.5km) and the scenic Dinard Golf Club (55km), offering stunning sea vistas.

Among the area's many highlights are the iconic Mont Saint-Michel (44km), once a fortified abbey, as well as the enchanting medieval towns of Dinan (30km) and Vitré (58km), both boasting remarkable 12th-century architecture. For a moving day trip, the D-Day landing beaches, just over two hours away, provide a powerful glimpse into wartime history.

Local Amenities

Nearest Airport	Rennes Bretagne Airport (45km)
Nearest Airport 2	Dinard Airport (48km)
Nearest Airport 3	Nantes Atlantique Airport (153km)
Nearest Amusement Park	Cobac Parc (14km)
Nearest Beach	Plage de Cherrueix (30km)
Nearest City	Rennes/Saint-Malo (37km/45km)
Nearest Ferry Port	Saint-Malo (45km)
Nearest Golf	Domaine des Ormes (15km)
Nearest Restaurant	Combourg (4.5km)



Nearest Supermarket	Combours (5.5km)
Nearest Town	Dinan (30km)
Nearest Village	Combours (5.5km)

What we love

- The main French château is truly authentic, with many historic features including the dining room's grand 15th century fireplace
- The heated swimming pool (12mx5m) set in beautiful landscaping is the perfect place to relax in the afternoon
- The vast estate is spectacular - during the spring and summer, the ponds are interconnected with waterfalls and streams
- Enhance your stay with private chef dinners, archery and riding, plus tastings of Calvados, cider, cheese and wine. Hunting and fishing are also possible
- A picture-perfect wedding venue with its own chapel and restored banqueting hall
- A fine location for exploring Brittany from vast sandy beaches to historic towns and cities including Rennes and Saint-Malo
- Mont Saint-Michel, one of France's most iconic destinations, is a wonderful day trip less than an hour away

What you should know...

- This listing is for exclusive use of the estate the main château and three independent annexes, sleeping up to 35 guests in total - please see the "Layout" tab for full details.
- For smaller groups of up to 15 guests, the main château can be booked independently - please see the separate listing Château Du Chevalier (<https://www.oliverstravels.com/france/brittany-the-atlantic-coast/brittany/chateau-du-chevalier/>). In this case, the annexes may be rented separately and château guests share the swimming pool and grounds.
- The restored cottage is a beautiful stone-house from the early 1800s and is intended for those with a special feeling for rustic, country-side Brittany.
- The owners live onsite on the first floor of the Rose House.
- If staying with children, please note there are ponds/water sources within the grounds.
- A car is essential here - make sure to use GPS to find the château; Brittany's roads can be unforgiving!

Terms & Conditions

- **Security deposit:** €1000 paid in cash, credit card or cheque to the owner and refunded upon departure, subject to full inspection.
- **Arrival time:** 5.00 p.m.
- **Departure time:** 10.00 a.m.
- **Energy costs included?:** Yes.
- **Linen & towels included?:** Extra €15 per person, paid locally.
- **Pets welcome?:** Well-behaved pets welcome on request only and with prior agreement with the owner.
- **Other Ts and Cs:** Guests will be required to sign a copy of the owner's rental terms before the arrival.
- **Changeover day:** Saturday.
- **End of stay cleaning available?:** Yes. However, guests are required to leave the accommodation clean, tidy and in the same condition as on their arrival. Any extra cleaning, laundry, maintenance and/or rubbish disposal required will be charged against the security deposit.
- **Smoking Allowed?:** Outside only.
- **Other 2:** Please also note that like all heated pools, pool heating and water temperature are reliant on weather and outside temperatures.
- **Insurance:** Guests are required to be in possession of a valid insurance policy, which covers them for cancellations, personal belongings, personal liability and any accidental damage caused during their stay.
- **Minimum stay:** 2 nights.
- **Tax:** French Visitors Tax payable locally (typically costs €1-€10 per adult per night- please enquire if exact amount is required).
- **Pool opening dates?:** The pool is open and heated approximately from 1st May to end-September. Please note that pool opening dates are subject to local weather conditions and pool maintenance requirements and that cooler months may not be suitable for swimming.