

# Chateau De Fremont

Region: France    Sleeps: 54

## Overview

In a beautiful and natural setting, surrounded by four acres of glorious grounds, Château De Fremont is a charming château ideal for family holidays, a reunion with friends or a romantic wedding in an ideal location in rural Burgundy.

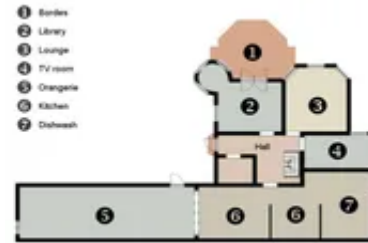
The château has a fascinating history; it was built in 1900 for a famous French actress by her lover, giving it a true air of romance. In World War II the château was sold to the Red Cross and it was used as a war hospital for French and British soldiers. In more recent times it has become a delightful and comfortable holiday home as well as an ideal setting for special celebrations.

The vast four-acre estate is wonderful for walks through the gardens and forest, playing tennis with the kids or simply relaxing by the heated swimming pool followed by a barbecue.

Inside, the interiors have been thoughtfully renovated with ample space on the ground floor to chat with friends in the living rooms, watch movies in the home cinema room or prepare meals in the semi-professional kitchen to serve by candlelight in the delightful *Orangerie*. Twelve bedrooms across the first and second floor offer room for up to 32 guests, including some quad rooms perfect for a gathering of extended family.

Furthermore, the renovated Coach House, available alongside the château, offers three pretty en suite bedrooms with balconies overlooking the countryside as well as two apartments, sleeping up to a further 22 guests. With its own private garden and terrace, it's a great option for wedding parties or larger groups looking for extra space.

The hospitable yet discreet owners live on the grounds



and can arrange a daily continental breakfast or simply deliver croissants and fresh bread to your kitchen every day. They have an extensive wine list that guests can buy from whilst wine-tastings can take place in local wineries across one of the world's most famous wine regions.

Indeed, you are close to the vineyards of the Côte de Beaune and Côte d'Or where incredible wines can be sampled and landscapes of vineyards can be admired. Beaune, the wine capital of Burgundy, is just forty minutes away, as is the famous *Route des Grands Crus*, which will not only appeal to wine lovers but also those who appreciate fine cuisine with many Michelin starred establishments across the Beaune region.

Closer to home, the Roman town of Autun has a wonderful weekly market as well as many historical treasures to discover. Meanwhile, nature lovers will adore the Parc Naturel Régional du Morvan, a protected nature park where you can pursue all sorts of outdoor activities in an outstanding setting.

## Facilities

Weddings • TV • Walking/Hiking Paths • Waterfront • Spa/Massage • Cycling • Wine Tasting • Recommended • Golf Nearby • Tennis Court • Wi-Fi/Internet • Chateaux & Castles • Table Tennis • Great Value • Dry Hire Option • Marquee Hire Permitted • Chef/Cook Available • Rural Location • Indoor Games • Cots (Cribs) • Maid Service Available • DVD • Private Pool • Outdoor Ceremony • Flexible Catering Options • Heritage Collection • Allow External Caterers • No Corkage • No Curfew • Indoor Reception Available • Nearby Church/Chapel • Catering Available • Breakfast Available • Swings • Pool Safety Feature • Heated Pool • Ideal for Kids • Football net • Ideal for Teens • Outdoor Games • Home Cinema • Working Fireplace/Woodburner • Heating • Caretaker/Owner on Site • High Chair(s) • Parking Space • Outstanding Landscapes • Outdoor Pursuit & Activities • Tourist Towns & Villages

# Interior & Grounds

- 1) Château De Fremont & Coach House (54-person rate) \*
- 2) Château De Fremont & Apartment Two (40-person rate)\*\*

*\* Please contact us for a tailor-made quote for 41-53 guests as lower prices may apply in some circumstances, depending on how many rooms/apartments are needed*

*\*\* Apartment Two is more simple in style and possibly ideal for teenagers - see description below*

## Château Interiors

### Ground Floor

- Hallway
- The Orangerie (16x14.5m) dining area
- Semi-professional kitchen, fully-equipped
- Library
- TV room with home cinema
- Lounge
- Reception room
- 3 x WCs

### First Floor

- 5 x twin bedrooms
- Double bedroom
- Quad bedroom with four single beds
- Shower block with three shower rooms and three separate WCs

### Second Floor

- 2 x quad bedrooms with four single beds
- Quad bedroom with double bed and two singles
- 2 x twin bedrooms
- Shower block with three shower rooms and three separate WCs

## Château Outside Grounds

- Heated swimming pool (12x6m, depth from 90cm to 2m, heated to 27C) with permanent cover (see drone video, side panels can be opened depending on weather). Open approximately April to end-October, subject to weather.
- Al-fresco dining terrace
- Barbecue
- Access to tennis court
- Play area with swings and football goal
- Pond (no fishing)
- Large grounds / garden (4 acres)

## Château Facilities

- Wi-Fi
- Heating (payable)
- Firewood



- Home-cinema and DVD player
- Books and board games
- Swings
- Football goals
- Hairdryer in each bedroom
- Bathroom toiletries
- Fire alarms
- Access to laundry room and ironing facilities (on request). *Please note that this is the owners' personal laundry room with two washing machines and is not suitable for use for all 40-54 guests.*
- 15 sun loungers

## The Coach House Interiors

### *Coach House Rooms (First Floor)*

- Bedroom One with double bed (180x200cm), TV, tea and coffee facilities, log-fire, large balcony with views, separate WC and en suite bathroom with bath and shower, toiletries, bathrobes and hairdryer
- Bedroom Two with double bed (180x200cm), TV, tea and coffee facilities, large balcony with views and en suite bathroom with bath and double sink, a separate shower room with WC, toiletries, bathrobes and hairdryer
- Bedroom Three with double bed (180x200cm), TV, tea and coffee facilities, log-fire, small balcony with views, separate WC and en suite bathroom with bath and shower, toiletries, bathrobes and hairdryer

### *Coach House Apartment One (Second Floor)*

- Living room and balcony with views
- Small equipped kitchen area
- Double bedroom
- Twin bedroom
- Bedroom with bunkbeds
- Shower room with toiletries
- 2 x hairdryers

### *Coach House Apartment Two (First Floor, more simple in style, ideal for teens etc).*

- 4 x double bedrooms
- 1 x twin bedroom
- Shower room with toiletries
- 2 x hairdryers

## Coach House Outside Grounds

- Private garden
- Al-fresco terraces
- Parking area (up to 50 cars)

The coach house and castle share a shaded summer garden

*Please note, the ground floor of the Coach House is a reception room which can be used for weddings/events - please see our Events tab for further details.*



## Location & Local Information

Château De Fremont is part of a small commune with just the château and two farmhouses. A small village is around 3km away whilst a village with a restaurant, grocery shop, *boulangerie* and butchers is just 8km away in Épinac.

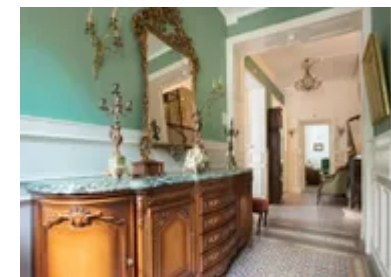
The château is an excellent starting point for exploring the local area and taking part in a wide variety of activities. It is located south-east of the Morvan Natural Park between Autun and Beaune.

Beaune (38km), Autun (20km), Nolay (13km), Chalon-sur-Saône (40km), Dijon (80km), and Château-Chinon (60km) are nearby and provide many kinds of touristic and cultural opportunities: museums, festivals and exhibitions. The area also includes numerous châteaux and other historical sites, including world famous vineyards and wine cellars where you can taste and buy excellent Burgundy wines by the bottle or '*en vrac*'. The château has all the information needed to plan your trips.

There are also excellent walks available around the château, with many trips starting there. They range from 4km upwards depending on how strenuous you want the walk to be, but all of them will provide stunning views and sights. The Morvan Natural Park is the perfect place for walking and would be ideal for you to bring a picnic. There are also some great outdoor activities across this region.

The nearest golf course is in Autun, an excellent 9 hole course which is 20 km from the château and 18 hole courses can be found in Beaune at 40km, Chalon at 40km and Dijon. Angling is also very popular in this area.

There is plenty for children and families to do in and around Burgundy including visiting a zoo, an adventure park, going go-karting or making pottery. There are also excellent restaurants suitable for families. Children also enjoy spending time at the château and making the most of the swimming pool, the tennis courts, the play area and the many ball games that they can play on the lawns.



## Local Amenities

Nearest Airport	Lyon (195km)
Nearest Airport 2	Geneva (240km)
Nearest Airport 3	Paris Orly/Paris CDG (300km/340km)
Nearest Village	Épinac (8km)
Nearest Restaurant	Tintry (1.5km)
Nearest Shop	Épinac (small grocery store) (8km)
Nearest Town/City	Autun (20km)
Nearest Train Station	Gare du Creusot TGV (25km)
Nearest Golf	Autun (20km)

## What we love

- This beautiful château served as a hospital for French and British soldiers during the Second World War. Local maps from that time indicated its location with a red cross
- The newly renovated Coach House is now available for larger groups to book alongside the château - see the "Features" tab for further details.
- The owners can arrange a daily continental breakfast for guests
- Book a tour of nearby vineyards to sample famous Burgundy wines
- The Roman town of Autun is only 20km away whilst the stunning natural landscapes of the Parc Naturel Régional du Morvan are also nearby

## What you should know...

- The 42-person rate is for the Château and Apartment Two only - this apartment is simpler in style, please see the "Features" tab for further details.
- The 54-person rate includes the Château and all of the Coach House.
- Please contact us for a tailor-made quote for 43-53 guests as lower prices may apply in some circumstances, depending on how many rooms/apartments are needed.
- The hospitable yet discreet owners live on site.
- The beautiful grounds include a pond.

# Terms & Conditions

- **Security deposit:** €2000 paid via bank transfer to the owner before arrival and refunded two weeks after departure, subject to full inspection.
- **Arrival time:** 4.00 p.m.
- **Departure time:** 10.00 a.m. (late check-out fee: €400, unless agreed with the owner).
- **Energy costs included?:** Yes.
- **Linen & towels included?:** Yes (excludes pool towel, bathrobe and slippers rental - see below re. pool towel charges).
- **Pets welcome?:** Not allowed.
- **Other Ts and Cs:** The 40-person rate is for the Château and Apartment Two (see Features) whilst the 54-person rate is for the Château and all of the Coach House. Please contact us for a tailor-made quote for 41-53 guests as lower prices may apply in some circumstances, depending on how many rooms/apartments are needed. Weddings, stag/hen parties and any special events are on request only and subject to prior arrangement with the owner and additional charges. Please note that the maximum group size for weddings is 84 guests. Please note that it is compulsory to park in the dedicated parking area (up to 50 cars) which is 50 metres from the Château and very well illuminated at night. Guests are welcome to offload their luggage in front of the château prior to parking. Guests are required to dispose of empty bottles in the glass recycling container in the nearby village.
- **Changeover day:** Saturday in July and August. Flexible during all other periods.
- **End of stay cleaning available?:** Extra €250, paid locally. Please note that 2027 bookings will have a €300 cleaning fee. Guests are required to leave the accommodation clean, tidy and in the same condition as on their arrival. Any extra cleaning, laundry, maintenance and/or garbage disposal required will be charged against the security deposit.
- **Smoking Allowed?:** Outside only.
- **Minimum stay:** 7 nights in July and August. 3 nights during all other periods.
- **Heating costs included?:** Extra €75 per day, paid locally.
- **Pool heating charge?:** Included. The pool is heated up to approximately 27C - please note that like all heated pools, pool heating and water temperature are reliant on weather and outside temperatures. The pool is heated by a pump system which is affected by the cold; external weather conditions directly impact the heating system efficiency.
- **Tax:** From 2025 onwards: French Visitors Tax payable locally in cash (typically costs €1-€10 per adult per night - please enquire if exact amount is required).
- **Pool towels included?:** Pool towel rental is €7 per person and bathrobe and slippers rental is €10 per person. Please request in advance and the fee is payable locally.
- **Pool opening dates?:** The pool is open approximately April to end-October. Please note that pool opening dates are subject to local weather conditions and pool maintenance requirements and that cooler months may not be suitable for swimming.