

# Villa Salema Azul

**Region:** Salema **Sleeps:** 16

---

## Overview

Villa Salema Azul is perched on the cliff top of Praia de Salema with breath-taking views over Salema beach and the amazing Algarve coastline. Salema is located in the far western side of the Algarve and can be described as a hidden treasure – it is the ideal location for those looking for a quieter and picturesque holiday in Portugal as it is located on the outskirts of a glorious national park.

This luxurious 6-bedroom villa is situated over 3 levels and faces directly onto the ocean with un-interrupted views - it is simply paradise! Villa Indigo Emerald can sleep 12 guests in the 6 bedrooms, however 4 extra beds can be added to accommodate 4 additional guests.

Upon entering the villa, you will find yourself in the open-plan living and dining room. The split-level living room is gorgeous with comfortable and colourful furnishings throughout and full-length windows and patio doors allowing light to flood the room and also allow guests to admire the ocean view. A spacious ensuite double bedroom is also located on this level as well as the large fully-equipped kitchen.

Head up to the first and second floors to find 4 more double bedrooms, each with ensuite bathrooms and wonderful views.

There is a self-contained apartment located on the lower level of this villa which would be ideal for a family or a group looking for extra space. In the apartment, you will find a kitchen, living area and double bedroom.

The exterior grounds are simply divine, especially the private infinity swimming pool which is the ideal place to cool off on those hot summer days. Relax on one of the many terraces, in or out of the sun. Cook up a feast on the



barbecue and dine alfresco, all whilst admiring the stunning coastal view.

Villa Salema Azul is only a short stroll down to the village centre where you will find a couple bars, restaurants, shops and of course the beautiful beach.

## Facilities

Surfing • Villa • Golf Nearby • Air-Con • Fishing • Watersports • Recommended • Walking/Hiking Paths • Walk to Village • Ideal for Kids • Private Pool • Cots (Cribs) • Special Offer • Has Discount • Ideal for Teens • Maid Service Included • Chef/Cook Available • Walk to Beach • Pets on Request • All Bedrooms En-Suite • Instagrammable • Beach Nearby • Ground Floor Bed & Bath • Beachfront • Modern • Parking Space • Walk to Restaurant • Wi-Fi/Internet • Seaview • Seafront • Outstanding Landscapes • Outdoor Pursuit & Activities • Tourist Towns & Villages • TV • Heating • Ideal for Babies & Toddlers • High Chair(s)

# Interior & Grounds

## *Lower Ground Floor (Apartment)*

- Ample living room with comfortable seating, TV and access to a terrace
- Open plan dining area for 4 people
- Well equipped kitchen
- Bedroom with double bed and en-suite shower room

## *Ground Floor*

- Split-level living room with fireplace, TV and access to a terrace
- Open plan dining area for 10 people and access to a terrace
- Well equipped kitchen with fridge/freezer, induction hob (electric), dishwasher, microwave, coffee-maker, toaster, table and chairs for 4 persons
- Bedroom with double bed, flat screen TV, office area with desk and chair, access to the pool area and en-suite shower room

## *First Floor*

- Bedroom with double bed, flat screen TV, access to a balcony and en-suite bathroom with bath and walk-in shower
- Bedroom with double bed, flat screen TV, access to a balcony and en-suite bathroom with bath and walk-in shower
- Bedroom with double bed, flat screen TV, access to a balcony and en-suite shower room

## *Top Floor*

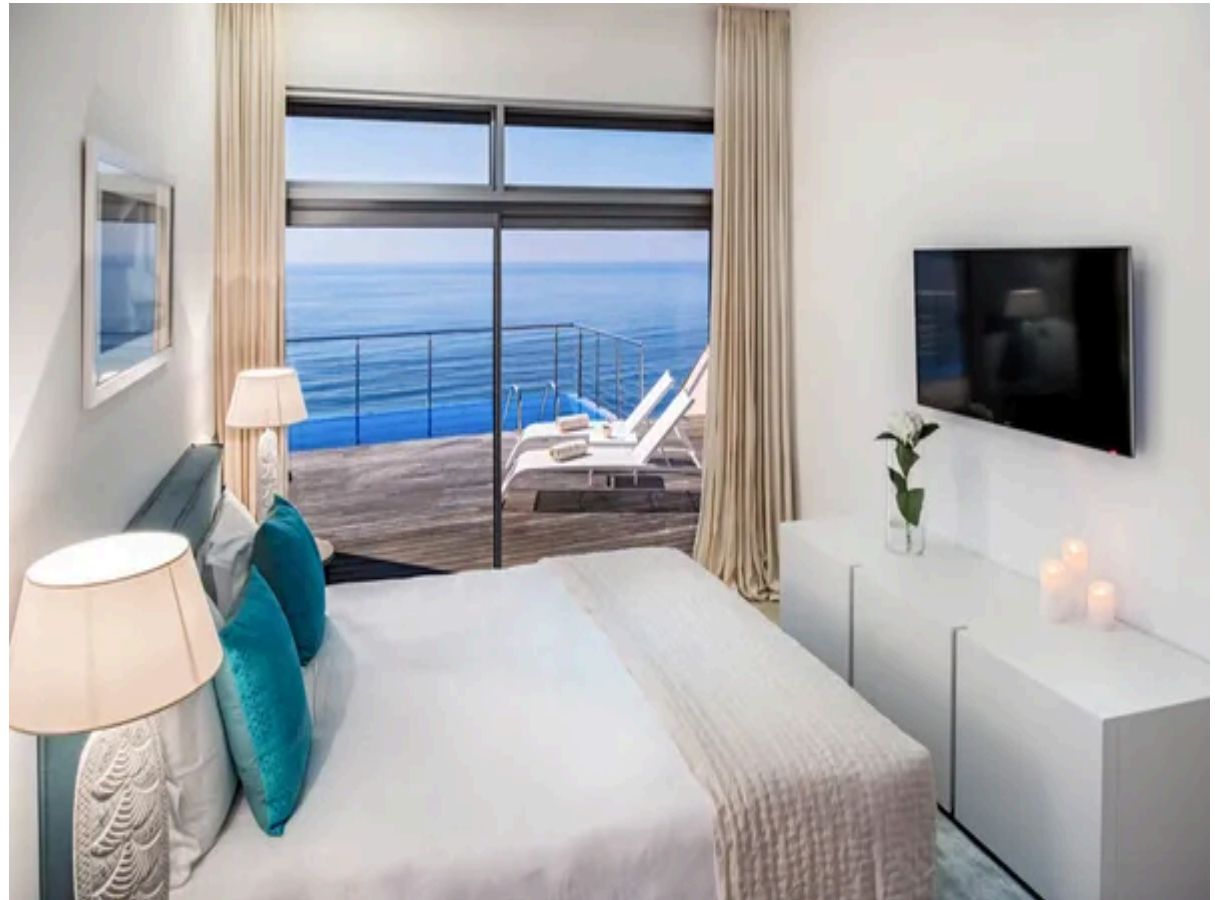
- Bedroom with double bed, dressing room and en-suite shower room

## *Exterior Grounds*

- Private infinity swimming pool, with Roman steps access (20m x 3.3m)
- Various sun loungers
- Outdoor dining
- Terrace furniture
- Outdoor shower
- Kamado Joe Barbecue
- Private parking

## **Additional Facilities**

- Welcome Hamper (white wine, red wine, beers, soft drinks, mineral waters with or without gas, coffee, tea, sugar, seasonal fruit, olive oil)
- Daily housekeeping services
- Complimentary Toiletries
- Changing of towels and linen twice a week
- Pool heating included
- Air conditioning (hot and cold)
- Alarm system
- Wireless internet access
- Flat TV's
- DEDON outdoor furniture
- Sun loungers
- Barbeque (charcoal)
- CLAUS PORTO bathroom amenities
- SAMPEDRO bed linen
- Gated property
- Security system



# Location & Local Information

## Salema

Salema is a small town of Budens parish, located in the municipality of Vila do Bispo, in the most western part of the Algarve. Located at the base of a cliff and surrounded by the National Park of Southwest Alentejo and the Algarve coast.

The village of Salema is one of the few communities that has a small indigenous fishing fleet of traditional colourful boats, still launched from the beach (but now with the help of a tractor), which is cast into sea to catch snapper, mackerel, sardines and octopus that you can taste freshly grilled at local restaurants on the same night.

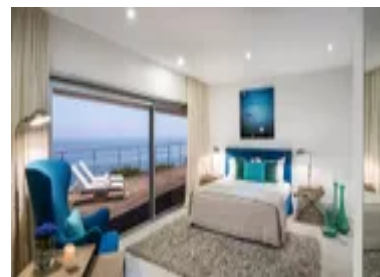
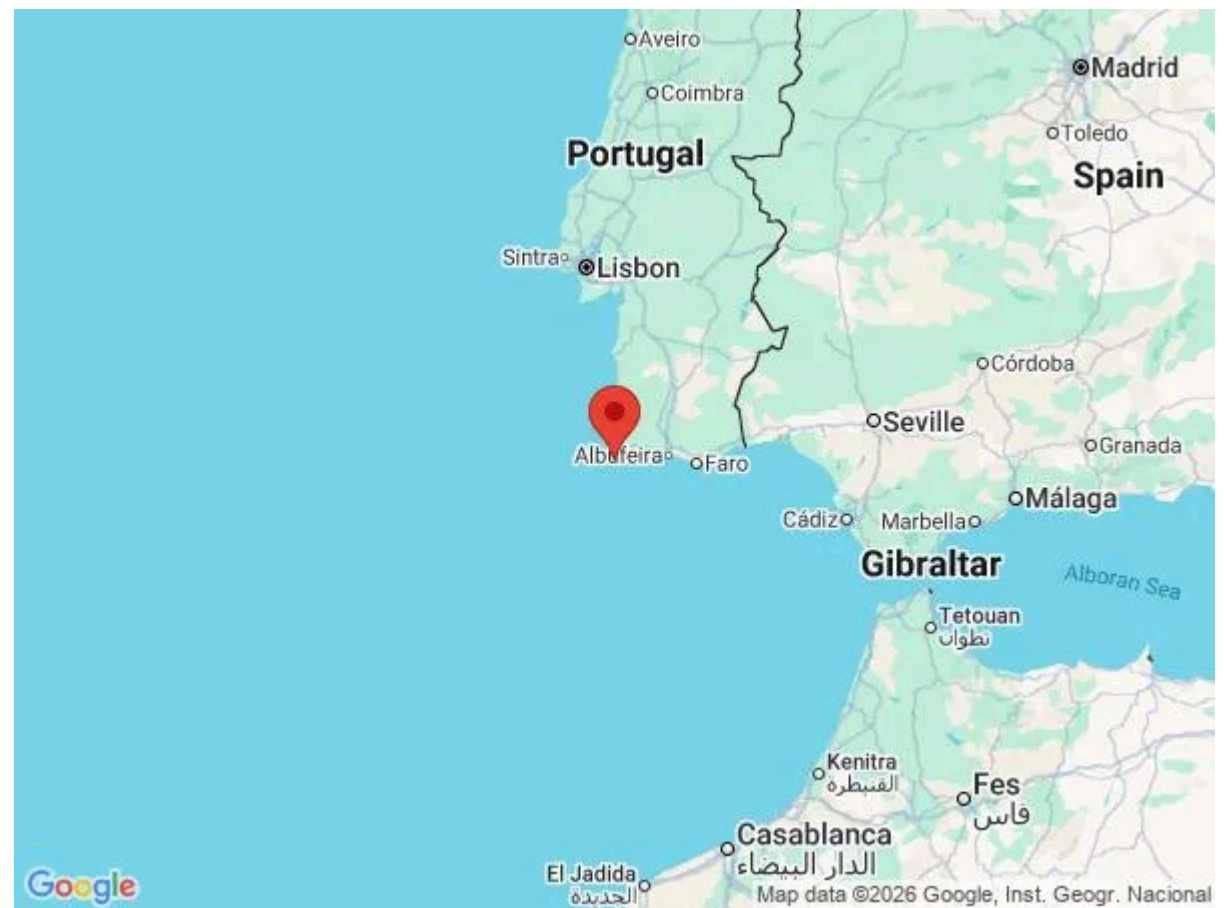
The sandy beach and gently sloping, it is ideal for swimming and safe for children. A lifeguard service is available during the summer months and the sea water quality is excellent. There are a couple of bars and restaurants in the village, some gift shops and convenience stores.

The city of Lagos to the east and Sagres to the West are just 15 km away. The west coast of the Algarve can be reached in about 15 minutes by car. There you can find sandy beaches stretching down the cliffs for miles. If you want to do more than just lie on the beach there are golf, tennis courts, spas, horseback riding, boat and walk all within a few miles. From the beach cliffs, there are also great launching points for practicing paragliding.

## Cultural Attractions

### Sagres Fortress (18km away)

Located on Cape Sagres, Promontorium Sacrum famous for its outstanding beauty, the "Fortaleza de Sagres" owes its origin to Henry the Navigator, who here would institute a village and die in 1460. From the wall built by the father of Discovery little remains since the fortress was rebuilt in the sixteenth century and the second half of the eighteenth century, when it was adapted to the defensive system "vauban". The entrance to this bastion fortress is a



good example of neoclassical architecture. Inside are in sight some guns, one sixteenth century tower and even the Church of Our Lady of Grace, built in the sixteenth century in the very place where once had been the Church of Santa Maria, founded by Henry the Navigator but destroyed by the English privateer Francis Drake in 1587. One of the most significant attractions of Fortaleza de Sagres is undoubtedly the rose of winds, a sundial that many think is contemporary to the infant and the nautical school founded in this Sagres. Place of deep historical and symbolic value, the monument offers visitors the opportunity to revisit the glorious period of the maritime discoveries and appreciate one of the most beautiful scenery in the world.

- Classified National Monument
- Open to the public (entrance fee)
- Time: from 09:30 to 17:30 / 20:00 in summer
- Closed: Monday, May 1st, 25th December

### **Lighthouse Cape St. Vincent (23km away)**

This fortress was built in the 16th century in order to protect the coast from the frequent attacks by Moorish pirates. It stands on the site of an earlier medieval convent, which, legend has it, is supposed to have housed the mortal remains of São Vicente (St Vincent). It is a military construction with a polygonal floor plan, with a gateway crowned by the royal shield and which once had a drawbridge.

Inside the fortress can be seen the lighthouse of São Vicente which was built in 1904 and is still in operation today.

- Open to the public
- Classified as a Building of Public Interest

### **City of Lagos Walls (20km away)**

The walls date back as far as the Roman period. They were rebuilt by the Arabs and considerably enlarged during the 16th century between the reigns of D. Manuel and Filipe I, because of the need to protect the growing city centre. The walls had huge strategic significance in the 15th and 16th centuries. They connect nine towers that were built



for artillery and there are seven gates.

- Classified as a National Monument
- Open to the public

## **Beaches**

- Martinhal Beach (17km away)
- Burgau Beach (10km away)
- Cordoama Beach (14km away)
- Luz Beach (12km away)

## **Golf**

### **Boavista Golf Course in Lagos (16km)**

Services: Driving Range, Chipping Greens, Snack Bar, Pro Shop and a golf academy.

Boavista Golf, opened in January 2002, was conceived by Howard Swan, the former President of the European Institute of Golf Course Architects and is a stunning course. It offers spectacular views of the city of Lagos, located nearby, as well as the Atlantic Coast and the Sierra de Monchique.

### **Espiche Golf Course (15km)**

The Espiche Golf is located in an ecological reserve, providing a great golfing experience in a beautiful natural environment. Architect Peter Sauerman conceived the form field to integrate it harmoniously into the surrounding landscape. Golfers who value diversity, charm and challenge in the game can experience great satisfaction to appreciate the many subtleties of this course par 72. The player is required to use a variety of techniques and a smart game is both necessary and rewarded. The fairways cleverly designed make full use of the natural depressions and rolling hillsides, while brilliantly carved and located greens require the player to use the full range of approximation techniques. There are two starting points from the 1st and 10th tees, both located in the centre of the course, which also includes a clubhouse that has showers, lockers, elevator and accessibility for people with disabilities. This space is still designed for holding parties, birthdays, weddings, etc. The Espiche Golf has an exceptional responsibility in the way it its maintenance,

with a history of environmental research and is committed to an ongoing process for sustainability.

**Shows, Events and Markets:**

- Monthly Market St. Michael Baron: 1st Monday of each month
- Market Budens: 1st Tuesday of each month
- Market Raposeira: 1st Wednesday of each month
- Vila do Bispo market: 1st Thursday of each month
- Market Sagres: First Friday of each month
- Festival of sweet potato / Lagos: end of November / beginning of December

**Local Amenities**

Nearest Airport	Faro Airport (105 km)
Nearest Bar/Pub	Atabua Bar (1 km)
Nearest Beach	Salema Beach (1 km)
Nearest Golf	Algarve Golf Academy (4 km)
Nearest Restaurant	Em Lume Brando (750 m)
Nearest Supermarket	Intermache (5 km)
Nearest Tennis	Santo Antonio Tennis Club (3 km)
Nearest Town/City	Lagos (20 km)
Nearest Village	Salema (1 km)

## What we love

- In an ideal location for those looking for a tranquil holiday to the beautiful Algarve
- The interiors have a contemporary style with plenty of patio doors leading out onto various terraces allowing guests to enjoy outdoor living
- Take a dip in the private infinity swimming pool, alternatively take a short stroll down the hill and relax on the wonderful Salema beach

## What you should know...

- Chef service can be organised during your stay or for a special occasion, for an additional cost
- There is a 7 night minimum stay during peak season (01/06 to 30/09)
- Although this villa can accommodate 16 guests, please note that 4 of the beds are 'put-me-up' beds
- Please note that a 50% deposit is required at time of booking



# Terms & Conditions

- **Security deposit:** €1000 paid via credit card to the property manager before arrival and refunded two weeks after departure, subject to full inspection. Please note that the property manager will reach out to clients directly to arrange collection.
- **Arrival time:** 4 pm
- **Departure time:** 10 am
- **Energy costs included?:** Yes, included in the rental price.
- **Linen & towels included?:** Yes, included in the rental price.
- **Pets welcome?:** Small/medium dogs on request only and with prior agreement with the owner. If accepted, a pet supplement of 65€ per pet per day will apply (payable locally).
- **Other Ts and Cs:** Cots & Highchairs are available free of charge; please enquire before arrival. A non-refundable 50% deposit is required to confirm a booking at this property (or full payment if booking within 12 weeks of departure).
- **Changeover day:** Flexible.
- **End of stay cleaning available?:** Yes. However, guests are required to leave the accommodation clean, tidy and in the same condition as on their arrival. Any extra cleaning, laundry, maintenance and/or garbage disposal required will be charged against the security deposit.
- **Smoking Allowed?:** Smoking & Vaping are not permitted.
- **Minimum stay:** 4 - 7 nights depending on season. All other durations on request.
- **Heating costs included?:** Yes, included in the rental price.
- **Pool heating charge?:** For those who require pool heating, it is included in the rental price, please enquire before arrival. Please note that like all heated pools, pool heating and water temperature are reliant on weather and outside temperatures.
- **Tax:** Tourist tax not applicable.
- **Internet access?:** Wi-Fi internet access included.
- **Pool towels included?:** Yes, included in the rental price.