

Chateau De Champ Carre

Region: France **Sleeps:** 20

Overview

Chateau De Champ Carre, a lovely 19th century chateau and cottages in Burgundy, is ideal for weddings, special occasions and holiday gatherings with family and friends. Relax by the swimming pool in the vast park and enjoy a gym and massage room. When you're ready to explore the region, you're 5 minutes from Beaune, close to the famed Meursault vineyards and wine cellars.

Experience the authenticity of the 19th century with all necessary comforts. The 12 elegant bedrooms and 8 modern bathrooms across the chateau and annexes are air conditioned, and you'll find several flat-screen TVs and free Wi-Fi in the sleeping areas. Gather together in a lounge with marble fireplace and a library in period style with a grand piano. The professional kitchen makes self-catering easy, or you can hire a professional chef.

The area around Beaune has an endless array of activities to choose from: cycling, hot air ballooning, museums, golf, bike riding, horseback riding and helicopter tours.

This expansive estate is 10 km from the Beaune train station and 175 km from the Lyon Airport.



Facilities

Marquee Hire Permitted • Rural Location • Cots (Cribs) • Waterfront • Table Tennis • Chateaux & Castles • DVD • Laptop Friendly Workspace • Gym/Fitness Room • Weddings • Air-Con • Golf Nearby • Has Discount • Wi-Fi/Internet • Special Offer • Maid Service Available • Outdoor Ceremony • Flexible Catering Options • Heritage Collection • Allow External Caterers • No Corkage • Indoor Reception Available • Nearby Church/Chapel • Catering Available • Swings • Private Pool • Pool Safety Feature • Ideal for Kids • Ideal for Teens • Pets on Request • Walk to Restaurant • All Bedrooms En-Suite • Ideal for Parties • Stag/Hen Allowed • TV • Heating • Conference Facilities • Caretaker/Owner on Site • High Chair(s) • Fenced Grounds • Walking/Hiking Paths • Wine Tasting • Fishing • Outstanding Landscapes • Outdoor Pursuit & Activities • Tourist Towns & Villages

Interior & Grounds

- 1) Château and Cottage (15 guests)
- 2) Château + Cottage + Pavillion (20 guests)

The Rooms

Room 1: This first floor 2 bedroom suite is situated in the direction of the rising sun, named after Empress Sissi of Austria and Hungary. It consists of two bedrooms: 1 double bedroom (160x200cm) and a small twin bedroom (two pull out beds, each 200x80cm) and an en suite bathroom. The suite also comes equipped with a reversible air conditioning unit, flat screen TV, internet access and access to the swimming pool and park. The en suite bathroom has a regency bathtub with lion paws feet, nestled in the centre of the imperially decorated alcove and an Italian shower with massage columns.

Room 2: This room has a 180x200cm canopied bed and comes fully equipped with a reversible air conditioning system, flat screen television, internet access, view of the park, access to swimming pool and an en suite bathroom with shower massage columns, a regency bathtub with lion's paws feet and a hairdryer.

Room 3: This room has been inspired by American literature and jazz culture. It has one bed 160x200cm and a bathroom with a shower, balneotherapy bath and hair dryer. The room also comes fully equipped with a reversible air conditioning system, flat screen television, internet access, view of the park and access to swimming pool.

Room 4: This room has one double bed 160x200cm, and a colossal bathroom with a shower, jumbo corolla shaped bathtub and hair dryer. The room also comes equipped with a salon's iron bench with fluffy cushions and an over ornate back rest, a reversible air conditioning system, internet access, a view of the park and access to the swimming pool.

The Cottage

This is a gorgeous cottage dating back to the 18th century, it has been restored with extremely good taste. It has a elegant integrated kitchen which opens out on the drawing room featuring a striking decorative chimney.

Raised Ground Floor - This floor has a drawing room with a decorative chimney, a television and hi-fi stereo. It also has 2 bedrooms, one with a double bed and one with a pull out bed for one or two persons. This one level cottage (with steps leading down to the garden area) also had a bathroom with a shower, toilet and washbasin and a fully equipped kitchen with an oven, hotplates, refrigerator, freezer, telephone, microwave oven and washing machine.

In the corridor adjoining the Chateau and Cottage, there is an additional small bedroom and bathroom which can sleep up to 2 additional guests.

In this corridor there is also a small bedroom for two guests/children, if needed. It is usually closed but may be opened on request - please enquire.

Outdoors - Outside, via steps, there is a garden lounge with a table, four chairs and cushions, deck chairs and parasol and an unenclosed garden



within the park. There is also a swing, barbecue and fenced swimming pool with a secure gate (6x12m, depth:1.1 - 1.9m). The swimming pool is private when you book the whole estate exclusively.

The Pavillion

This building offers harmonious spaces, all the comforts of a sweet aura, and the charm and authenticity of a house decorated with antique furniture, its tranquil rooms of character and refined embellishments.

The Pavillion has a lobby leading to a drawing room with a chimney and French windows, this drawing room also opens on to a beautiful park with centenarian trees. It has a television with international channels, a hi-fi stereo and DVD player. It also has a separate dining room, a study with a single bed and a fully equipped kitchen with a refrigerator freezer combination, 4 vitrocermaic hobs, electric oven, telephone, microwave oven, vent hood, dishwasher, washing machine and dryer and a toilet with washbasin.

Upstairs - This floor has four bedrooms, two very large rooms, one with a 160 bed and one with a 140 bed, a third room with a 140 bed and the fourth with a 120 single bed, ideal for children. Upstairs there are also 2 bathrooms, one with a bathtub, washbasin and toilet and the other with a shower, washbasin and toilet.

Outside - There is a garden lounge with a table, 6 chairs and cushions, deckchairs and parasol and an unenclosed garden within the park. There is also a swing, barbecue, garage and use of the swimming pool for all guests on the estate (6x12m, depth:1.1 - 1.9m). The swimming pool is fenced with a secure gate.

Further additional beds may be available on request.

Features

- Wi-Fi
- Heating
- Air-conditioning (bedrooms only)
- Flat screen TVs
- DVD player
- Hi-Fi stereo(s)
- Telephone
- Laptop friendly workspace
- Barbecue
- Swing

Location & Local Information

While staying at Chateau Champ Carre you have the opportunity to discover a region rich in artistic and cultural wealth:

Beaune: Its architectural heritage

- The hospices of Beaune
- The wine museum
- The Marey museum
- The collegial of Notre Dame
- Wine cellar visits

Neighbourhood: The vineyards the pride of the bourgogne with its villages such as:

- Pommard
- Volnay
- Meursault
- Puligny Montrachet

Walking tours:

- St Romain le haut
- Santenay chemin des 3 croix
- Visit of the château de la Rochepot

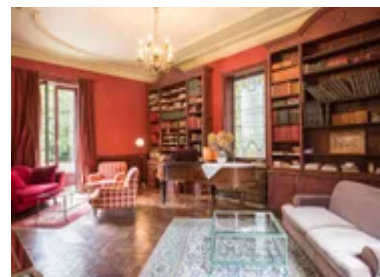
Activities:

- Levernois Golf
- Bike riding (bike route from Beaune to Santenay)
- Hot air ballooning
- Helicopter rides
- Horseback riding
- Fishing, etc

Dijon: The city of the hundred bell towers

- Capital of the Dukes of Burgundy
- The museum of fine arts
- The cathedral of st Benigne
- The church of notre dame and many more tours in old Dijon

Local Amenities



| | |
|--------------------|---------------------------------|
| Nearest Airport | Lyon (Over 100 km) |
| Nearest Ferry Port | Calais (Over 100 km) |
| Nearest Village | (1 km) |
| Nearest Town/City | Beaune (3 km) |
| Nearest Restaurant | (1 km) |
| Nearest Bar/Pub | (1 km) |
| Nearest Golf | Levernois (5 km) |

What we love

- With a large pool, gym and massage room, you'll feel like you're at a spa.
- The two annexes add additional fully equipped kitchens and drawing rooms.
- Keep an eye out for wildlife in the chateau's 15-acre park filled with 100-year-old trees. You might see a doe with her young!

What you should know...

- A car hire is highly recommended
- The swimming pool is shared with one other cottage unless you've booked the entire estate
- Please note that only the 20-person price includes rental of the entire estate (Château, Cottage and Pavillion), whilst the 15-person price is for the Château and Cottage only. Please see the 'Features' tab for full details

Terms & Conditions

- **Security deposit:** €1000 paid in cash to the owner upon arrival and refunded upon departure, subject to full inspection.
- **Arrival time:** 4.00 p.m.
- **Departure time:** 10.00 a.m.
- **Energy costs included?:** Yes.
- **Linen & towels included?:** Yes.
- **Pets welcome?:** On request only and with prior agreement with the owner.
- **Other Ts and Cs:** Please note that only the prices for 20 guests include the rental of the Pavillion. Weddings, stag/hen parties and any special events are on request only and subject to prior arrangement with the owner and additional charges.
- **Changeover day:** Flexible.
- **End of stay cleaning available?:** Extra €290 (chateau and cottage only) or €350 (entire estate), payable locally. However, guests are required to leave the accommodation clean, tidy and in the same condition as on their arrival. Any extra cleaning, laundry, maintenance and/or rubbish disposal required will be charged against the security deposit.
- **Smoking Allowed?:** Outside only.
- **Insurance:** It is recommended that all guests take out insurance to cover against potential cancellation and any accidental damage caused during your stay at the property.
- **Minimum stay:** 2 nights.
- **Heating costs included?:** Extra cost, payable locally. €75/day (October and April) and €90/day (November to end-March) for the chateau and cottage only. €90/day (October and April) and €120/day (November to end-March) for the entire estate.
- **Tax:** French Visitors Tax payable locally (typically costs €1-€3 per adult per night- please enquire if exact amount is required).
- **Pool towels included?:** Yes.