

Jolie Ferme

Region: Dordogne **Sleeps:** 4

Overview

This site with breathtaking views has been a farm since 1903 and has recently become the much-loved home of two women in love with nature and the sheer beauty of this location.

On top of a hill facing Bergerac, the estate has three hills which offer different views of the town. Up here it's all about silence, calm and retreat, but fabulous Bergerac is only a 5-minute drive away, so good restaurants, bars, shops and river sunsets are just a stone's throw away.

The hostesses, keen to share their special idyll, have transformed an attached, independent and private cottage for guests and added a lovely heated pool for their exclusive use.

The hilly grounds of 12 hectares are vast and surrounded by fields, forest, lawns and fruit trees. Children have plenty of space to run around, but there is also table-football and two adult bikes are available. The kids will love the Shetland ponies, chickens and pigeons which the owners feed every day. Around the estate there is a hiking path in the surrounding forest.

Inside, the spacious cottage is comfortable, well-equipped and cozy. The fireplace makes it ideal at all times of the year.

Jolie Ferme provides the perfect escape to a rural setting, yet near a famous town in the spectacular Dordogne, which is full of châteaux, vineyards and wineries, fine restaurants and historical sites.



Facilities

Maid Service Available • Wi-Fi/Internet • Golf Nearby • Great Value •
Private Pool • Romantic • Rural Location • Cots (Cribs) • Recommended •
Exclusive • Heated Pool • Ideal for Babies & Toddlers • Ideal for Teens •
<1hr to Airport • Ground Floor Bed & Bath • TV • Outdoor Games • Table
Football • Working Fireplace/Woodburner • Caretaker/Owner on Site •
High Chair(s) • Walking/Hiking Paths • Wine Tasting • Cycling • Horse
Riding • Fishing • Outstanding Landscapes • Outdoor Pursuit & Activities
• Tourist Towns & Villages • Historical Sites

Interior & Grounds

Villa Interior (surface: 110m² - ground floor only)

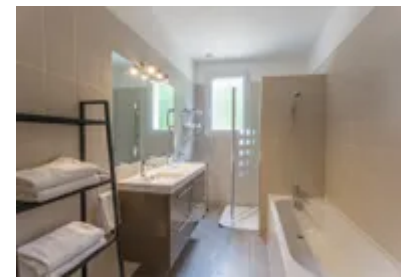
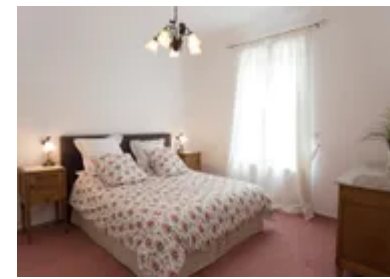
- Fully equipped kitchen with oven, stove top hobs, dishwasher, fridge, coffee machine and microwave
- Open-plan living dining area with wooden table for 6 guests, leather sofas, fireplace, plasma screen TV and access to the terrace
- Double bedroom
- Twin bedroom
- Family bathroom with twin wash basins and shower in bath
- Separate WC

Outside Grounds

- Private heated swimming pool with security alarm (Size: 10x4m / Depth: 1.5m). Open from April to October (approx.)
- Four poolside sun loungers and parasol
- Outside dining table with 4 chairs and parasol on the terrace
- Large gas barbecue
- Lawned gardens
- 12 acres of private grounds with fields, forest and fruit trees
- Farm with animals including Shetland ponies, chickens and a dove cot
- Forest trails and hiking routes around the property

Facilities

- Wi-Fi
- 2 adult bicycles
- Vacuum cleaner
- Iron and ironing board
- Dove cot
- Satellite TV
- Table football
- Sun loungers
- Gas barbecue
- Washing machine



Location & Local Information

Jolie Ferme enjoys a fabulous hilltop location, surrounded by 12 hectares of stunning forests and fields, a real paradise for hiking and nature lovers.

The ancient town of Bergerac is located just a few kilometres drive away from the villa. The town is characterised by its charming medieval features and original cobbled pavements. Boasting boutique shops, restaurants and pavement cafes it is most appreciated on foot.

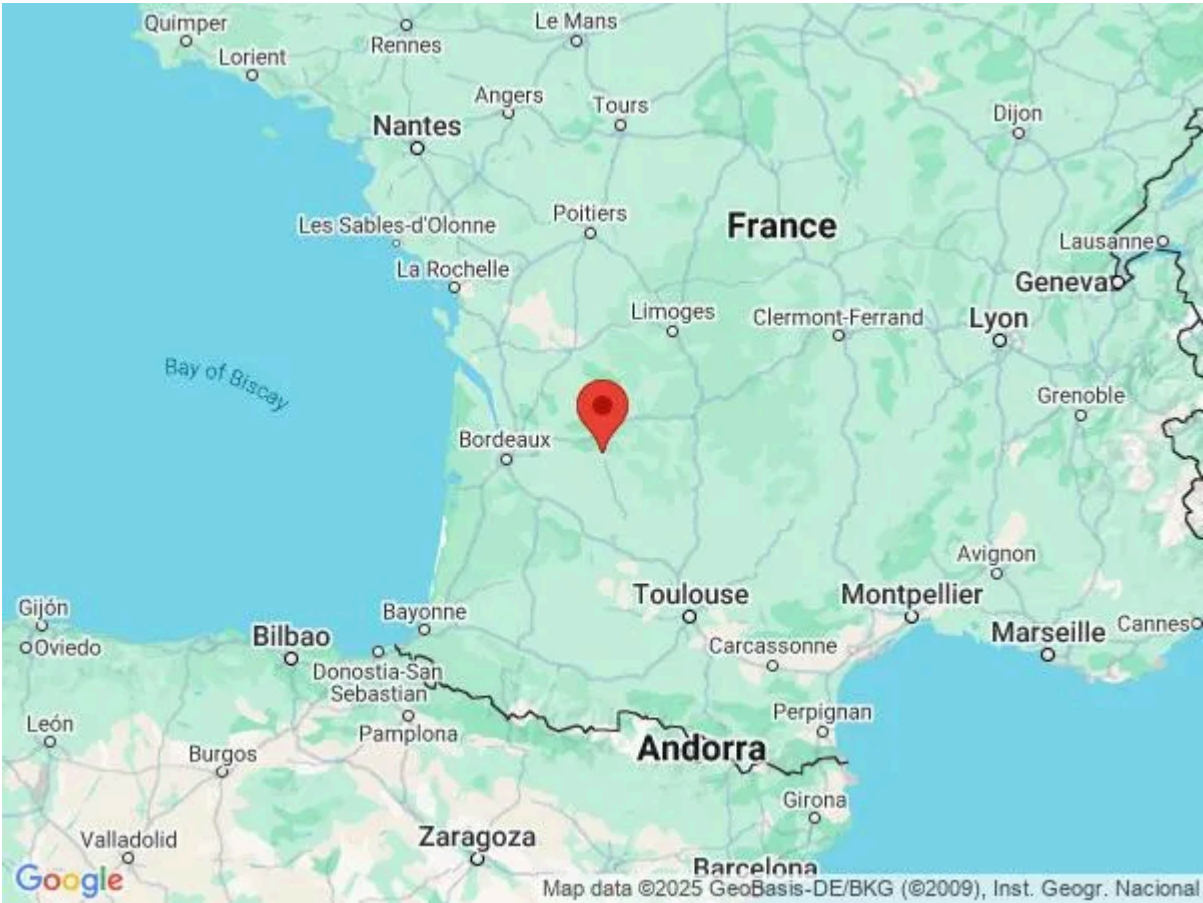
Situated in the renowned Dordogne, Bergerac is a real gateway to the surrounding wine region. Indulge in the famous *Maison des Vins* before exploring the countless wineries and vineyards in the beautiful countryside.

During the summer months, the town is thriving with regular markets, concerts and festivals. The whole family will enjoy a boat trip up the river, with the opportunity to see local chateaux and typical French villages. Within the local surroundings, Bergerac has a whole host of activities on offer, including caves, castles, bowling, water parks and lakes, to name a few. So whether you're seeking a relaxing getaway immersed in a rural environment, or an action packed trip, Bergerac is the ideal town to accommodate all your desires.

Furthermore, the closest airports are Bergerac and Bordeaux, with direct flights from the UK every Saturday.

Local Amenities

Nearest Airport	Bergerac/Perigueux/Bordeaux (10km/70km/120km)
Nearest Town/City	Bergerac (4km)
Nearest Restaurant	Bergerac (4km)
Nearest Bar/Pub	Bergerac (4km)
Nearest Train Station	Bergerac (4km)
Nearest Supermarket	Bergerac (4km)
Nearest Shop	Bergerac (4km)
Nearest Beach	Le Porge (155km)
Nearest Tennis	Bergerac (4km)



What we love

- You may find it hard to decide which view of Bergerac from the property you prefer
- A rural setting with the convenience of Bergerac just a 5-minute drive away
- The surrounding forest with hiking trail and the green fields dotted with Shetland ponies
- A welcome hamper with local cheeses, fresh fruits, juice, wine, beers and soft drinks will be waiting for you upon arrival

What you should know...

- You can cycle into Bergerac, or if you're sporty walk there in approximately 30 minutes (return is uphill!)
- The fantastic brand new swimming pool is available from April to October

Terms & Conditions

- **Security deposit:** €300 cash paid on arrival
- **Arrival time:** 16.00
- **Departure time:** 10.00
- **Energy costs included?:** Yes
- **Linen & towels included?:** Bed linen, pool and bath towels included
- **Pets welcome?:** No
- **Other Ts and Cs:** Pool open from April-October (approx.)
- **Changeover day:** Saturday
- **End of stay cleaning available?:** Yes. However, please note guests are required to leave the accommodation clean, tidy and in the same condition as on their arrival. Any extra cleaning, laundry, maintenance and/or garbage disposal required will be charged against the security deposit
- **Smoking Allowed?:** No
- **Minimum stay:** 7 nights
- **Heating costs included?:** Yes
- **Pool heating charge?:** No