

# Chateau De Jaques

Region: Champagne    Sleeps: 30

---

## Overview

Château de Jaques is an impressive 17th-century *Monument Historique* set in ten hectares of gardens and wooded grounds with an ancient *pigeonnier*, gatehouse and an old private chapel.

It is the labour of love of its highly creative and colourful owner, an international furniture designer and passionate admirer of all beautiful and historical things, who is slowly bringing it back to life. This is a work in progress, to repair not renew and therefore, preserve this protected monument's original and charming patina. Here, it's less about perfection and more about blending in and being part of this historic building and its past.

Construction of Château De Jaques began at the end of the 1600s, on the foundations of an even older medieval castle, built in 1425. The three medieval towers and the original castle cellars of this period still remain today. The gardens were designed by Le Notre, who was a famous garden architect in his day and well known for the gardens he created at Versailles. It was once visited by Charles II whilst he was in exile and also occupied by the Germans during World War II. The 'orange' room, the Bishop's preferred bedroom and the priest's confession room, still has the original wallpaper selected by the Earl and the kitchen in this château feels like a step-back-in time.

Village church bells can be heard from the gardens and the bakery is just a short walk outside the château gates; almost close enough to smell the freshly baked bread and croissants. A picturesque 15-minute walk through the woods takes you to a delightful lake, with another lake a little further, and the Marne River is nearby for river cruising and a river beach. There are plenty of lovely walks and cycle paths to explore and horse riding close by.

This authentic and traditional residence feels like an informal country house making it a perfect retreat for families and friends to get together. Home-cooking can be organised and for weddings and special events, quality catering by French '*top chefs de cuisine*' can be arranged, depending on your style, taste and budget.

Château de Jaques is not a place to stay but an experience...a glimpse of the past, through the cracks and flaws created by the layers of history which made them.



## Facilities

Weddings • Golf Nearby • Fishing • Recommended • Wine Tasting •  
Chateaux & Castles • Walking/Hiking Paths • Walk to Village • Ideal for  
Parties • Maid Service Available • Marquee Hire Permitted • Great Value •  
Ideal for Teens • Cots (Cribs) • Chapel on Site • Chef/Cook Available •  
Outdoor Ceremony • Heritage Collection • Wi-Fi/Internet • Rural Location  
• Washing Machine • Indoor Reception Available • Nearby Church/Chapel  
• Outstanding Landscapes • Outdoor Pursuit & Activities • Tourist Towns &  
Villages • Indoor Games • DVD • Dishwasher • Working  
Fireplace/Woodburner • Heating • Caretaker/Owner on Site • On-Site  
Concierge • High Chair(s)

# Interior & Grounds

## Option 1) 20-person rate – Château only (10 bedrooms, 8 bathrooms)

*Includes château ground floor (excluding the private right wing\*) and 10 bedrooms on the first floor.*

## Option 2) 30-person rate – Whole estate (15 bedrooms, 10 bathrooms)

*Includes château ground floor (excluding the private right wing\*) and 10 bedrooms on the first floor, the gatehouse and the pigeonier.*

*\*Please note that the newly renovated right wing, on the ground floor and with its own separate entrance, is a private apartment reserved for use by the owner on rare occasions.*

### Château Interiors

#### Ground Floor

- Large entrance hall with grand piano
- Grand salon with sofas, fireplace, chairs and tables
- Dining room\*\* with fireplace and seating for up to 22 guests
- Professional kitchen with two electric ovens, induction hobs, two dishwashers and fridge-freezer
- Guest WC
- Private right wing of chateau (not accessible to guests, occasionally used by owner and has its own entrance)

*\*\* Please note that the dining room is not huge, so we would recommend that if you are taking the whole estate you do so in the warmer months, March – October, so that you can enjoy meals either outside or in the marquee, which can seat up to 80. If you do wish to stay here during the Winter with a large group, then you would need to consider more informal eating options.*

#### First Floor

- 2 x interconnecting bedrooms 1 and 2 with double bed and shared bathroom with bath, shower and separate WC
- Bedroom 3 with double bed and en suite shower room
- Bedroom 4 with twin beds and en suite shower room
- Bedroom 5 with double bed and en suite bathroom
- Master bedroom 6 (bridal suite) with double bed and en suite bathroom with bath and shower
- Bedroom 7 with double bed and en suite shower room
- Bedroom 8 with double bed and en suite shower room
- 2 x interconnecting bedrooms 9 and 10, both with double beds and shared bathroom with bath, shower and separate WC

### Château's Outside Grounds

- Courtyard
- Gardens
- Outdoor table and chairs
- Barbecue
- Seating area
- Parking space



### **Château's Facilities**

- Wi-Fi
- Heating
- Working fireplace
- Board games
- Grand piano
- Professional laundry room (guests may use on request)

### **Gatehouse Interiors** (*located inside the gate, approximately 100m from the château*)

#### *Ground Floor*

- Dining room with fireplace
- Kitchen with oven, hob, dishwasher and fridge-freezer
- Bathroom with bath, shower and washing machine
- Bedroom with double bed

#### *First Floor*

- 2 x bedrooms with double bed

### **Gatehouse Outside Grounds**

- Private terrace area
- Outdoor space with table and chairs leading to château gardens

### **Gatehouse Facilities**

- Central heating
- Fireplace

### **Pigeonnier Tower Interior** (*located approximately 25m from the château*)

#### *Ground Floor*

- Sitting area with table and chairs

#### *First Floor (accessed via steep, spiral open staircase)*

- Bedroom with double bed and access to exterior

#### *Second Floor*

- Bedroom with double bed
- Shower room
- WC



## Location & Local Information

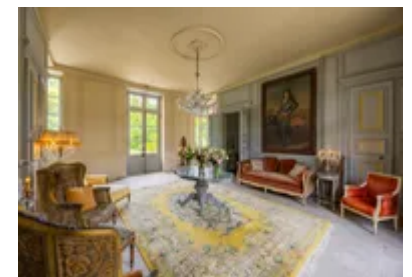
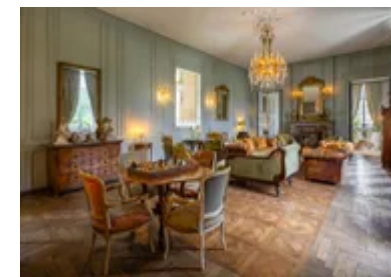
The château is located in a small, pretty village with a delicious *boulangerie* for your morning pastries and a little grocery store with especially wonderful strawberries in season. There is a pizzeria in the next village, five minutes by car and a supermarket about a ten minutes drive away or you can head to nearby Chalons-en-Champagne (11km) for a wider choice of shops and restaurants.

A picturesque 15-minute walk through the woods takes you to a delightful lake, and another lake a little further, and the Marne River is nearby for river cruising and a river beach. There are plenty of lovely walks and cycle paths to explore and horse riding close by.

You'll also find a charming covered market three times a week (Wednesday, Saturday and Sunday) in Chalons-en-Champagne (11km), an impressive town known for its rich historical sites, lovely gardens and two UNESCO listed churches. Take a cruise through the beautiful canals to see the impressive architecture of the town as you sail through. From July to late August there's a waterside '*plage*' with sunbeds laid out over the lawns, a large sandpit, loads of games plus canoes or pedalos around the canal. Golf lovers in the meantime will appreciate Golf de La Grande Romanie (27km) just to the east of the town.

From Chalons you can also take the high-speed train to Paris within an hour and a half for a remarkable day exploring the amazing city or head to Disneyland Paris (146km) by car or train for a special day out for the family.

You can start your Champagne tour by visiting Joseph Perrier's vast chalk caves in Chalons, with samplings possible before heading out to discover. Then head to the '*route de champagne*' which takes you through some idyllic villages where you can taste and buy champagnes. There are small producers who will sit you around their kitchen table to try their wines, some who will take you on a cycling tour of the vineyards and of course some of the biggest champagne houses in the world. Some of the Champagne producing villages not to be missed include



Avize, Vertus and Cramant, each about 40 minutes drive away.

Then of course there is the lovely home of champagne, Reims (60km) with its rich historical past, stunning medieval buildings and inspiring Art Deco architecture. There are some excellent restaurants in this city and if you travel on a Saturday be sure not to miss the impressive indoor market. Then travel further north to the Montagnes de Reims for further delightful villages and wonderful vineyards.

Another noteworthy town to discover is Troyes (82km) about an hours drive south, one of France’s most romantic towns with an incredibly picturesque historic centre and yet more incredible dining and drinking opportunities.

Local Amenities

Nearest Airport	Paris Vatry Airport (22km)
Nearest Airport 2	Paris Charles de Gaulle Airport (181km)
Nearest Airport 3	Paris Orly Airport (175km)
Nearest Ferry Port	Dieppe/Calais/Caen Ouistreham (314km/331km/447km)
Nearest Train Station	Châlons En Champagne (10km)
Nearest Village	Located in a village (0km)
Nearest Restaurant	Pizzeria (5km)
Nearest Shop	Bakery and small shop in village (Short walk)
Nearest Supermarket	Intermarché Contact Pogny (7km)
Nearest Town	Chalons-en-Champagne (11km)
Nearest City	Reims (60km)



## What we love

- This is a grand *monument historique* with many original features and staying here feels like a step back in time
- The newly restored *pigeonnier* is an example of the owner's style and creative flair; this old *pigeonnier* from 1425 has been restored in a minimalist way, retaining its 'raw' and original features
- We love the old private chapel, which in the 18th century became the private chapel for this important family; the Earls Loisson de Guinaumont
- Walk to the village bakery for fresh bread and delicious pastries
- The lake and river are nearby and as pretty as a landscape painting
- Home-cooking can be arranged alongside high-end catering using French 'top chefs de cuisine'

## What you should know...

- The 20-person rate includes the château only (10 bedrooms) whilst the 30-person rate includes the whole estate - please see the 'Layout' tab for full details.
- Please note that the newly renovated right-wing of the château (on the ground floor with its own entrance) is not accessible to guests - it is a private apartment reserved for the use by the owner on rare occasions.
- The château farmhouse by the entrance is occupied by the resident staff.
- Expect to find original furniture, some peeling paintwork and old-fashioned bathrooms...this is a work in progress of a classified building.
- On the rare occasions when not booked with the château, the gatehouse and the Pigeonnier may be booked separately or used by the owner.
- There are train tracks running near the back of the property, so children should be supervised accordingly.
- If you are planning an event and/or require any catering, please refer to the "Events" and "Extras" tabs for full details and conditions.



# Terms & Conditions

- **Security deposit:** €1000 paid by bank transfer to the owner one month before arrival and refunded two weeks after departure, subject to full inspection (and less deduction for cleaning).
- **Arrival time:** After 4.00 p.m.
- **Departure time:** Before 10.00 a.m.
- **Energy costs included?:** Yes.
- **Linen & towels included?:** All linen and bath towels are included in the rental price.
- **Pets welcome?:** Not allowed.
- **Other Ts and Cs:** Stag and hen parties are not allowed. Weddings and other special events are on request only and subject to prior arrangement with the owner and additional charges. Please note that weddings and special events are only possible when booking the whole estate for its full capacity of up to 30 guests. Please note that external chefs and caterers are not allowed. The 20-person rate includes the chateau only (10 bedrooms, excluding the private right wing). The 30-person rate includes the whole estate (15 bedrooms, excluding the private right wing). Please refer to the 'Layout' tab for full details of the accommodation. Please note there should be no more than 2 guests in one bedroom, excluding babies in cots. There are additional baby travel cots if needed, no extra charge. Please request in advance. On the rare occasions when not booked with the château, the Gatehouse and the Pigeonnier may be booked separately or used by the owner. Please note that the newly renovated right-wing of the château (on the ground floor with its own entrance) is not accessible to guests - it is a private apartment reserved for the use by the owner on rare occasions. The château farmhouse by the entrance is occupied by on-site staff.
- **Changeover day:** Flexible.
- **End of stay cleaning available?:** No, charged at €12 per person (including children) and deducted from the security deposit. Guests are required to leave the accommodation clean, tidy and in the same condition as on their arrival. Any extra cleaning, laundry, maintenance and/or rubbish disposal required will be charged against the security deposit.
- **Smoking Allowed?:** No smoking in the property.
- **Insurance:** It is recommended that all guests take out insurance to cover them against potential cancellation and any accidental damage caused during their stay at the property.
- **Minimum stay:** 2 nights (or 3 nights for events/weddings, on request).
- **Heating costs included?:** Yes.