

# Chateau Meuse

**Region:** Champagne   **Sleeps:** 60

---

## Overview

Château Meuse is accessed along a 3 km private road in the renowned Champagne region of France. Beautifully secluded in the 2000 hectare Ardennes Forest, on the banks of the river Meuse, the château dates back to the 1600s, and is peacefully located in a vast valley. Château Meuse was built by Oranje-Nassau, using rocks from the mountain next to the château.

The estate comprises of a main château and five gites, offering accommodation for up to 60 people. Facilities available on the estate include table tennis, fishing and a *petanque* court (please note that you should bring your own equipment for games). There is also a newly installed above ground small heated pool with a sandy poolside area with sun loungers for relaxing and playing in the sun.

The area around the château is a paradise for hikers and mountain bikers, and mountain bikes are available for hire. Guests are welcome to bring their own horse, as the estate and forest are excellent for riding.

In addition to the château's own beautiful dining room, which includes an open fireplace, the estate benefits from a large reception barn that is furnished as a restaurant and available for hire. Guests have exclusive use of Château Meuse and its grounds, and the gites and chateau will not be rented separately, so you can be assured that you will be the only group on site for the duration of your stay.

Château Meuse was renovated and rebuilt in the 18th century by the King of Belgium, Leopold II, who acquired the property for his mistress. The King planted exotic trees from the Belgian colony of the Congo in the château gardens, including palm trees, which can still be seen on the estate. The oldest tree is now more than 300 years old. Today, the château estate benefits from a superb collection of rare plants and trees. The oldest building on the estate is the tannery, also built from stone from the mountain next to the château.

## Facilities

Ideal for Kids • Wine Tasting • Stag/Hen Allowed • Fishing • Golf Nearby • Private Pool • Ideal for Parties • Walking/Hiking Paths • Canoeing/Kayaking • Cycling • Chateaux & Castles • Weddings • Maid Service Available • Cots (Cribs) • Ideal for Teens • Chapel on Site • Great Value • Heated Pool • Chef/Cook Available • Outdoor Ceremony • Pool Safety Feature • Heritage Collection • Allow Ceremonial Fire • Wi-Fi/Internet • Waterfront • Allow Fireworks • Rural Location • Indoor Reception Available • Outstanding Landscapes • Outdoor Pursuit & Activities • Tourist Towns & Villages • TV • Table Tennis • Indoor Games • DVD • Outdoor Games • Working Fireplace/Woodburner • Heating • Conference Facilities •



Caretaker/Owner on Site • Pre-Stocked Fridge Available • Breakfast Available • Babysitting Available • On-Site Concierge • Swings • Trampoline • Slide • Climbing frame • Boules/Petanque • Baby bath • High Chair(s)

# Interior & Grounds

- 1) Main Château only (20-person price)
- 2) Main Château and cottages (60-person price)

**Main Château Interior** (400m2, 20 guests)

## Ground Floor

- Entrance hall with WC
- Sitting room with satellite TV and DVD player
- Dining room (for up to 30 guests) with fire-place and music system
- Semi-professional kitchen, fully equipped including electric oven, microwave, gas range, coffee maker, two fridges, one freezer and dishwasher
- Twin bedroom with private bathroom with Italian shower and WC (can be adapted for guests with limited mobility)

## First Floor

- 2 x Twin bedroom with private bathroom and WC
- 2 x King-size bedroom with private bathroom with shower and WC
- King-size bedroom with balcony and private bathroom with bath and WC

## Second Floor

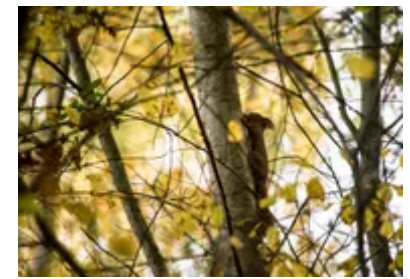
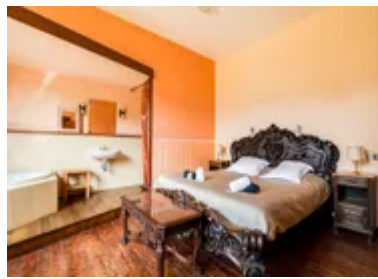
- Family room with 1 double bed and 1 single bed and private bathroom with shower and WC
- Family room with 5 x single beds and 2 private bathrooms with showers, plus one WC

## Outside Grounds

- Small above-ground heated swimming pool (6.5mx9.20m, height: 1.3m), open approximately May to September (10.00 a.m. to 7.00 p.m.). Poolside area accessed via safety gate.
- Poolside area with sandy beach and sun loungers
- Terraces around the chateau
- Covered terrace with BBQ
- Outdoor furniture
- Farmer golf
- Trampoline
- Table-tennis (in chapel)
- Boules pitch
- Bikes
- River Meuse in front of château
- Paddleboards/canoes
- Ample parking

## Facilities

- Wi-Fi (via fibre-optic and satellite)
- Music system
- Satellite TV and DVD player
- Stables and grassland available for horses



### **The Gîtes (up to 40 guests)**

The small farmhouses, dotted across the estate, are ideal for larger groups or those seeking more privacy. There are seven separate cottages/gîtes in total to accommodate up to 40 guests.

Please note that whilst each cottage has complimentary Wi-Fi, only three devices at a time can be connected.

#### **Interior of Cottage 1 (10-14 guests)**

##### **Ground Floor**

- Kitchen-diner with stove, fridge-freezer, microwave, coffee maker, toaster, oven and dishwasher
- Living room with satellite TV and woodstove

##### **First Floor**

- Bunk bed bedroom
- 3 x Double bedrooms (beds 1.60mx2m)
- Twin bedroom
- 2 x Bathrooms with shower and double washbasins
- 2 x separate WCs

##### **Second Floor**

- 2 bedrooms with 4 single beds in total

#### **Outside Grounds**

- Private terrace and BBQ
- Large garden with outdoor furniture
- Surrounded by forest and river

#### **Facilities**

- Satellite TV

#### **Interior of Cottage 2 (5-7 guests)**

##### **Ground Floor**

- Living room with satellite TV
- 1 double bedroom (bed 1.60 x 2 m) with bathroom (walk-in shower + WC)
- Open-plan kitchen-diner with fridge-freezer, microwave, oven, coffee maker and toaster

##### **First Floor**

- 2 x twin rooms
- Bathroom with shower and WC

##### **Second Floor**

- Twin room

### Outside Grounds

- Terrace with outdoor furniture
- BBQ

### Facilities

- Wifi
- Satellite TV

### Interior of Cottage 3 (6 guests, in annexe north of castle)

#### Ground Floor

- Kitchen, well equipped including fridge, stove, microwave, oven and coffee maker

#### First Floor

- 1 double bedroom
- Bathroom with shower and WC

#### Second Floor

- Double bedroom
- Twin bedroom

### Outside Grounds

- Terrace with outdoor furniture
- BBQ
- Garden
- Surrounded by forest

### Facilities

- Wi-Fi
- Satellite TV
- Woodstove

### Interior of Cottage 4 (4-5 guests, in annexe north of castle)

#### Ground Floor

- Kitchen, well equipped with freezer, microwave, coffee maker and toaster

#### First Floor

- Double bedroom
- Bathroom with shower, double washbasin and WC

#### Second Floor

- Triple room with 3 x single beds

### Outside Grounds

- Terrace with outdoor furniture
- BBQ

#### **Facilities**

- Wi-Fi
- Satellite TV
- Woodstove

#### **Interior of Cottage 5 (2 guests, also suitable for a couple with baby)**

##### **Ground Floor**

- Kitchen, well equipped including fridge, microwave, coffee maker and toaster
- Lounge with sofa

##### **First Floor**

- Double bedroom (bed 1.8mx2m)
- Bathroom with bath and washbasin
- WC

#### **Outside Grounds**

- Private garden overlooking Risdoux stream
- BBQ
- Private terrace with outdoor furniture

#### **Facilities**

- Wi-Fi
- TV
- Woodstove

*NB – only cottage in the building so good privacy*

#### **Cottage 6 (2 guests)**

##### **Ground Floor**

- Well-equipped kitchen with dining area: fridge, microwave, coffee maker, toaster
- Lounge corner with sofa

##### **First Floor**

- Double bedroom (bed 1.60 × 2 m)

- Bathroom with shower and washbasin

- WC

## Outside

- Private garden overlooking the Risdoux stream
- BBQ
- Private terrace with outdoor furniture

## Facilities

- Wi-Fi
- TV

## Cottage 7 (2 guests, suitable for a couple with a baby)

### Ground Floor

- Well-equipped kitchen with dining area: fridge, microwave, coffee maker, toaster
- Living room with sofa
- Bathroom with shower and washbasin
- WC
- Option: sofa bed for 2 guests (140 × 200 cm) — on request

### First Floor

- Double bedroom (bed 1.60 × 2 m)

## Outside

- Private garden
- BBQ
- Private terrace with outdoor furniture

Facilities

- Wi-Fi
- TV
- Pellet stove



# Location & Local Information

The Ardennes region is beautifully diverse, and a paradise for hikers, mountain bikers and riders, with woodlands, vast lakes, winding rivers and a variety of terrains. The river valleys consist of canyons reaching up to impressive green mountainous peaks. Towns close to the chateau include Namur, set around a 19th century Citadel and benefiting from excellent restaurants and great bars, Dinant, Rochefort, St Hubert, Bouillon, which is renowned for fantastic canoeing along the River Lesse, and Vireux, a super choice for restaurants, street markets and shopping.

If you're a fishing fan, the Meuse is a fantastic river which holds some huge fish of all sorts of species. It is easily accessible along almost its entire length, all that is required is a French fishing license (Carte de Peche). There are plenty of backwaters and numerous creeks that are ideal for whitebait or carp. You can also discover the Meuse valley on the water, enjoying a boat tour!

For those who prefer more fast-paced activities, why not try paragliding! This is a very unique way to take in the beautiful countryside that Champagne has to offer and there are many sites nearby.

There are so many places to explore around the region: the Chateau and Abbee at Chimay, the Han caves, canoeing along the River Lesse and hiking in the woodlands. This makes Chateau Meuse a fantastic base from which to discover the region of Champagne.

## Local Amenities

Nearest Airport	Zaventem, Brussels (141km)
Nearest Ferry Port	Calais (285km)
Nearest Golf	Charleville Mezières (46.5km)
Nearest Restaurant	Hargnies (8.5km)
Nearest Town/City	Givet (23km)
Nearest Village	Hargnies (8.5km)



## What we love

- The château gardens are superb, with exotic trees from Congo and a tree over 300 years old!
- A unique above-ground pool (in the summer) and sandy beach area, table tennis, fishing and farmer golf can all be enjoyed at the château - this is a great place for outdoor pursuits
- The interior of the château is classic yet comfortable
- On the banks of the River Meuse, the location is picture-perfect
- With the wide range of accommodation available, this is an ideal venue for weddings and celebrations

## What you should know...

- The 20-person rate is for the main château only whilst the 60-person price also includes the cottages - please see the 'Features' tab for details on the layout.
- The gardens are wonderful for children to play in - kids will need to be supervised due to the nearby river and streams.
- A new small above-ground Zodiac swimming pool has been installed - please see the 'Layout' tab and photos for exact details.
- Please note that mid-week stays of 4 nights maximum are available for the price of 2 nights.
- Please note that the use of any external caterers and/or contractors is not permitted.
- Please note the minimum stay for the following national holidays is 3 nights: Easter, Labour Day, Victory Day, Ascension Day, Whit Monday, Bastille Day, Assumption Day, All Saints' Day, Armistice Day, Christmas, and New Year.
- Please note that whilst each cottage has complimentary Wi-Fi, only three devices can be connected at a time.
- The property has a front desk where you can ask for information on the area and reservations.

# Terms & Conditions

- **Security deposit:** €1000 paid via PayPal to the owner no later than 3 days before arrival and refunded upon departure, subject to full inspection.
- **Arrival time:** 4.00 p.m. - 6.00 p.m.
- **Departure time:** 9.00 a.m. - 10.00 a.m.
- **Energy costs included?:** Yes.
- **Linen & towels included?:** Included when renting the entire property (20 guests or more). Extra cost of €15 per person for under 20 guests.
- **Pets welcome?:** Animals are allowed in the cottage only on request and with prior agreement with the owner. If accepted, a pet supplement will apply (paid locally).
- **Other Ts and Cs:** Weddings, stag/hen parties and any special events are on request only and subject to prior arrangement with the owner and additional charges. Please note that mid-week stays of 4 nights maximum are available for the price of 2 nights. Please note that the use of any external caterers and/or contractors is not permitted. The 20-person rate is for the main château only whilst the 60-person price also includes the cottages - please see the 'Features' tab for details on the layout. The small pool is above ground and a unique style compared to other traditional-style swimming pools. Please see the 'Layout' tab for details and the photos. Sand from the surrounding poolside area should not be taken into the garden.
- **Changeover day:** Flexible, excluding Sundays, Christmas day and New Year's day.
- **End of stay cleaning available?:** Yes. However, guests are required to leave the accommodation clean, tidy and in the same condition as on their arrival. Any extra cleaning, laundry, maintenance and/or rubbish disposal required will be charged against the security deposit.
- **Smoking Allowed?:** Outside only.
- **Insurance:** Guests are required to be in possession of a valid insurance policy, which covers them for cancellations, personal belongings, personal liability and any accidental damage caused during their stay.
- **Minimum stay:** Please note the minimum stay for the following national holidays is 3 nights: Easter, Labour Day, Victory Day, Ascension Day, Whit Monday, Bastille Day, Assumption Day, All Saints' Day, Armistice Day, Christmas, and New Year.
- **Heating costs included?:** No, heating of the hall not included. Wood box if required: €10 each.
- **Pool heating charge?:** Pool heating is normally included. Please note that like all heated pools, pool heating and water temperature are reliant on weather and outside temperatures.
- **Tax:** French Visitors Tax payable locally (typically costs approximately between €1-€3 per adult per night- please enquire if exact amount is required).
- **Pool opening dates?:** The pool is open approximately May to September (10.00 a.m. to 7.00 p.m.). Please note that pool opening dates are subject to local weather conditions and pool maintenance requirements and that cooler months may not be suitable for swimming.