

Casa Anahi

Region: Lanzarote Sleeps: 10

Overview

Casa Anahi stands in a breathtaking location along the cliff top of Puerto del Carmen's Old Town, offering an unbeatable vantage point overlooking the sparkling Atlantic. Perched just above the winding promenade that stretches from the picturesque harbor to the tranquil cliffs leading to Puerto Calero, the villa allows guests to immerse themselves in uninterrupted ocean vistas that extend as far as the eye can see. Whether it's dawn's gentle light or the mesmerising hues of dusk, every moment spent here is framed by the dramatic beauty of the sea.

Designed with comfort and elegance in mind, the villa's interiors marry modern style with a welcoming ambiance, making it feel like a true home away from home. The spacious open-plan layout on the ground floor includes a fully-equipped kitchen, cosy lounge, and a dedicated dining area, offering ample space for family gatherings or moments of quiet retreat. Casa Anahi comfortably accommodates up to ten guests, with four bedrooms upstairs, each featuring an en-suite bathroom, and an additional unique private apartment accessible from the terrace. This secluded apartment offers its own double bedroom, lounge, bathroom, and kitchenette—ideal for guests seeking extra privacy.

The highlight of Casa Anahi is undoubtedly its exquisite outdoor terrace. Here, guests can indulge in panoramic sea views while dining al fresco beneath a charming wooden pergola, savoring the beauty of the surrounding coastal landscape. The private pool adds an extra layer of relaxation, perfect for a refreshing dip under the warm sun after a leisurely day at the beach or exploring nearby local gems.

With shops, restaurants, and lively bars all within easy walking distance, Casa Anahi is ideally positioned for guests to experience the best of Puerto del Carmen's Old Town. For those seeking a retreat that combines serene sea views with effortless access to local amenities, this villa provides a remarkable coastal haven.

Please note that the apartment that houses additional 2 people is not available at the moment, so the max capacity is 8. Please enquire for more information.

Facilities

Air-Con • Villa • Walk to Village • Ideal for Kids • Private Pool • Special Offer • Has Discount • Cots (Cribs) • Ideal for Teens • All Bedrooms En-Suite • Beach Nearby • Modern • <1hr to Airport • Walk to Restaurant • Waterfront • Wi-Fi/Internet • Seaview • Washing Machine • Outstanding Landscapes • Coffee Machine • Outdoor Pursuit & Activities • Hairdryer •



Interior & Grounds

The Villa

Ground Floor

- Open-plan living area with 55" SKY TV, DVD, selection of books, dining facilities and doors leading to the large terrace
- Kitchen with oven, hob, microwave, dishwasher, fridge freezer and breakfast bar

First Floor

- Master bedroom with double bed, patio doors leading to balcony and en-suite bathroom with walk-in shower, twin washbasins and WC
- Bedroom with twin beds, patio doors leading to balcony and en-suite bathroom with shower, WC and washbasin
- Bedroom with twin beds and en-suite bathroom with shower, twin washbasins and WC
- Bedroom with double bed, chaise lounge, dressing area and en-suite bathroom with shower, twin washbasins and WC

Internal Apartment (accessed from the pool terrace & available for groups of more than 8 guests) Not available at the moment please enquire for more information.

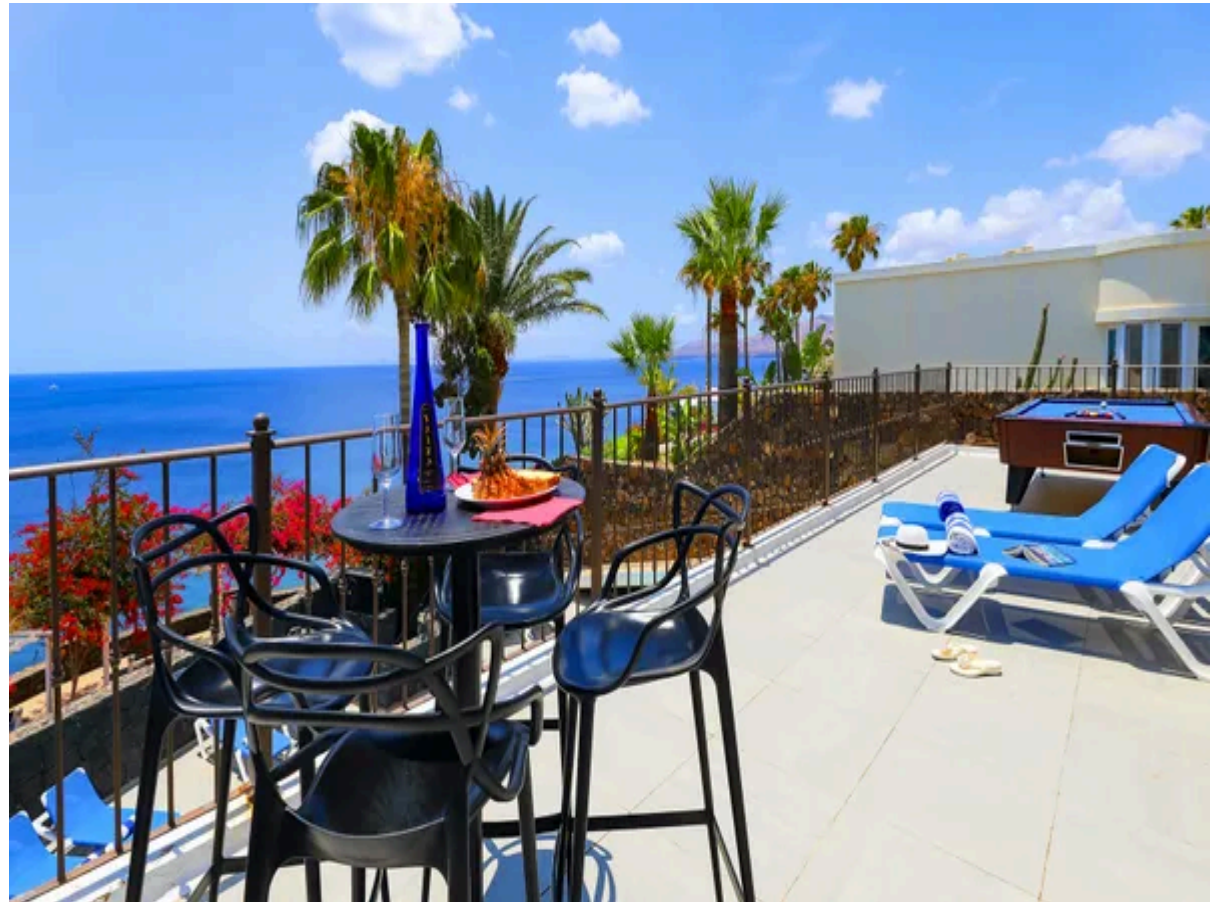
- Open-plan living area
- Kitchenette with hob, microwave and fridge
- Bedroom with double bed
- Bathroom with walk-in "rain" shower, twin washbasins and WC

Exterior Grounds

- Private pool (9 x 4m, depth: 1m - 1.6m)
- Covered dining facilities
- Wooden pergola
- Barbecue
- Pool table

Additional Facilities

- Wi-Fi
- Air conditioning set on a timer
- Washing machine & tumble dryer
- Iron & board
- Baby cots & highchairs are available on request for an additional charge
- Parking for 3 cars



Location & Local Information

Casa Anahi enjoys a prime position on the cliff top in Puerto del Carmen's charming Old Town, offering guests an unrivaled perspective of the Atlantic. The villa sits directly above the coastal promenade, a scenic pathway that meanders from the quaint Old Town harbor all the way to Puerto Calero, a stylish marina lined with cafes and boutiques. This trail, with its sweeping ocean views, is ideal for a scenic walk or leisurely jog, and makes exploring the area on foot a breeze.

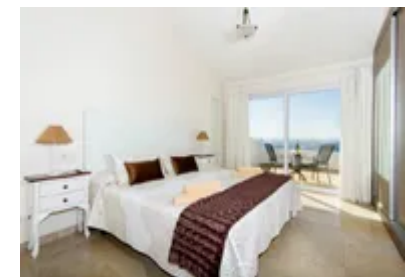
The location blends the quiet allure of the Old Town with easy access to a lively array of amenities. Just steps away, guests can find a range of shops, bustling restaurants, and cozy bars, each offering a taste of local life and cuisine. The proximity to the Old Town's harbor adds a unique charm to the setting, where fishing boats and yachts drift lazily, giving a picturesque view of the authentic Lanzarote coastal scene.

While Casa Anahi offers a serene retreat, it's also perfectly placed for day trips and outings. Just a short drive brings guests to Puerto Calero, known for its upscale marina, and to nearby beaches with soft sands and clear waters. For those interested in exploring Lanzarote's renowned volcanic landscapes, the villa's location provides easy access to the island's natural wonders.

This cliff-top position offers not only dramatic sea views but also proximity to Puerto del Carmen's main attractions, making it ideal for guests who want both relaxation and the opportunity to experience the vibrant heart of Lanzarote. Casa Anahi's location truly captures the essence of coastal beauty and the convenience of being close to everything one might desire on a sun-drenched island escape.

Local Amenities

Nearest Airport	Lanzarote Airport (11km)
Nearest Town/City	Puerto del Carmen (900m)
Nearest Shop	(500m)
Nearest Restaurant	(600m)
Nearest Beach	(1.6km)



What we love

- The brilliant location means that everything you need is reachable on foot
- The sophisticated marina of Puerto Calero is just a 10-minute car journey away, allowing you to spend an evening sipping cocktails in the harbour while admiring the impressive yachts
- The internal apartment is perfect for those who want a little more privacy from the rest of the group!

What you should know...

- One of the bedrooms is located in an internal apartment which is accessed by the pool terrace and so would not be ideal for younger children
- Please note that during high season, all bookings will be based on the max capacity rate
- Please note that the apartment that houses additional 2 people is not available at the moment, so the max capacity is 8. Please enquire for more information.
- The property is on 3 levels. There are 15 steps from the gate to the front door. As you enter the main house, the lounge, dining area, and kitchen are on one level with the 4 bedrooms upstairs. From the lounge patio doors, leading onto the upper terrace, you can then access the lower level to the pool and apartment by steps or a ramp.

Terms & Conditions

- **Security deposit:** £250 charged to client's credit card as a pre-authorisation at least 2 weeks prior to arrival and refunded two weeks after departure, subject to full inspection.
- **Arrival time:** 4.00 p.m.
- **Departure time:** 10.00 a.m.
- **Energy costs included?:** Yes, included in the rental price
- **Linen & towels included?:** Yes, included in the rental price
- **Pets welcome?:** Not allowed.
- **Other Ts and Cs:** The prices advertised are for 6 guests with an additional charge for the 7th & 8th person. There is also a separate apartment that can be rented for the 9th & 10th person with a rental amount of 350 GBP per week. Please note that during high season, all bookings will be based on the max capacity rate.
- **Changeover day:** Flexible. Please be aware that this property does not accept any arrivals on the 24th, 25th, or 26th of December.
- **End of stay cleaning available?:** Yes, standard changeover clean included. Guests are required to leave the accommodation clean, tidy and in the same condition as on their arrival. Any extra cleaning, laundry, maintenance and/or rubbish disposal required will be charged against the security deposit.
- **Smoking Allowed?:** Smoking & vaping are not permitted.
- **Other 2:** Baby cots & highchairs can be provided on a request basis at an additional cost of £15 per item, per week.
- **Minimum stay:** 2 weeks over Christmas and New Year. 7 nights the rest of the year. All other durations upon request.
- **Heating costs included?:** Yes, included in the rental price
- **Pool heating charge?:** Pool heating is included between November-April. For those who require pool heating outside of these months, there will be an additional charge of £100 per week (to be paid to OT prior to travel). This extra is only available on request, and with prior arrangement before arrival. Please note that like all heated pools, pool heating and water temperature are reliant on weather and outside temperatures.
- **Tax:** Tourist tax not applicable
- **Internet access?:** Wi-Fi internet access included in the rental price.
- **Pool towels included?:** Not included