

Can Pol

Region: Mallorca Sleeps: 8

Overview

A lovely villa with magnificent sea-views set on Mallorca's rugged western coastline. With a private swimming pool and just a short walk from the charming seaside town of Port de Soller, Can Pol offers you the best of both worlds – comfortable, modern accommodation with cafes and beaches nearby and the stunning north-west corner of the island on your doorstep ready to explore.

Over three levels, you are rewarded with stunning sea-views from the spacious balcony, accessed from the living room and kitchen. Here you have a BBQ and a lovely wrought iron table, perfect for a lazy lunch with a sea-view or dining under the stars with the twinkling lights of Port de Soller ahead. There is a fabulous swimming pool and terrace with sun-loungers which has been cleverly sheltered using glass windows meaning you can still enjoy the remarkable views and there are shady patios to discover when the summer heat hits.

The spacious living-dining room is bright, airy and inviting with warm neutral décor to give it a relaxing ambience. Enjoy the sea-view from the comfy sofas or feast with family at the indoor dining table. The modern kitchen is very well equipped and is perfect for cooking up a feast using the island's finest ingredients.

The bedrooms are on the lower floors, with access to the swimming pool area. They each have their own bathrooms and they all enjoy spacious walk-in power showers. The bedrooms have crisp white linen, warm towels and clean, neutral décor and they all enjoy the marvellous sea-views that this house offers.

Port de Soller is on the west Mallorcan coastline in a beautiful horseshoe harbour, surrounded by the Tramuntana mountains. There are two beaches – Platja



d'en Repic beach which is popular with families and the closer Platja des Traves, where you can hire pedal boats. There is a pedestrianized promenade with cafes, restaurants and shops and at the harbour you can spot luxury yachts, pleasure cruisers as well as fishing boats.

The charming town of Soller is just 5km away by tram or car. Here you will find cafes, bars and restaurants in the magnificent main square, Plaza de la Constitucion, which is also where the tram from the port drops you off. The bustling market day on Saturday is not to be missed.

This area is a walkers paradise and many of the paths through the Serra de Tramuntana start or pass through the town. Bike rental is also possible and a good way to potter between the nearby villages or look for more challenging routes.

Facilities

Washing Machine • Villa • Wi-Fi/Internet • Air-Con • Coffee Machine • Seaview • Walk to Beach • Hairdryer • TV • Historical Sites • Walking/Hiking Paths • Chef/Cook Available • Not For Little Ones • Walk to Village • Maid Service Available • Beach Nearby • Cots (Cribs) • Private Pool • DVD • Modern • No car required • Babysitting Available • Ideal for Teens • Walk to Restaurant • <1hr to Airport • Tumble Dryer • Dishwasher • Microwave • High Chair(s) • Parking Space • Outstanding Landscapes • Outdoor Pursuit & Activities • Tourist Towns & Villages

Interior & Grounds

The Villa

**There is a separate studio apartment with twin beds, open-plan kitchenette and shower room which can be rented out on request (maximum occupancy including this apartment would be eight guests). Please enquire about the additional price for this.*

Ground Floor

- Living & dining area with terrace access
- Fully-equipped kitchen

Lower Ground Floor

- Bedroom with double bed and en-suite bathroom
- Bedroom with twin single beds
- Bedroom with twin single beds
- Two bathrooms

** On a request basis, an additional single bed can be provided in one of the twin rooms.*

Exterior Grounds

- Private swimming pool (10m x 6m)
- Terrace with Port Soller views
- Dining facilities
- Sun loungers & parasols

Additional Facilities

- Wi-Fi
- Washing machine & dryer
- Dishwasher
- Iron
- TV & DVD
- A cot & highchair can be provided on a request basis

Touristic Registration Number: ETV-4163



Location & Local Information

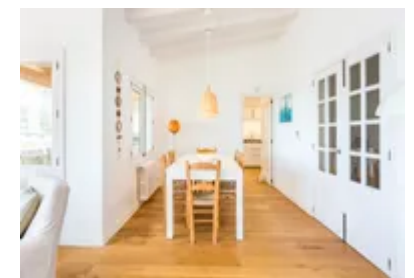
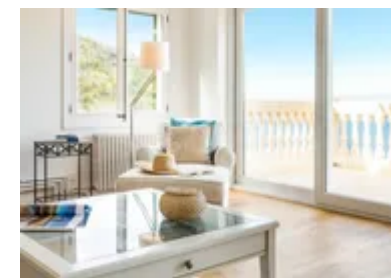
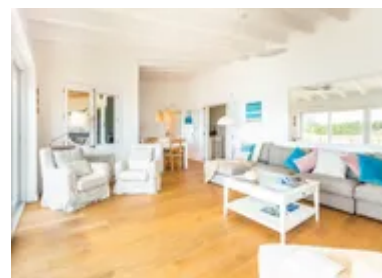
Port de Soller is on the west Mallorcan coastline in a beautiful horseshoe harbour, surrounded by the Tramuntana mountains. With a rich maritime past this area escaped the over development of other parts of the island and it is now a pleasant sea-side resort with good facilities. There are two beaches – Platja d'en Repic beach which is popular with families and the closer Platja des Traves, where you can hire pedal boats.

There is a pedestrianized promenade with cafes, restaurants and shops, a mixture of old-world tradition and some contemporary spots too. The harbour has an interesting history and nowadays you can spot luxury yachts, pleasure cruisers as well as fishing boats. Here you can also pick up a boat trip to the mountainous coastline of Sa Calobra where it's a short walk to the stunning Torrent de Pareis. You can also charter a yacht to explore the nearby hidden coves of this dramatic coastline.

The charming town of Soller is just 5km away, by tram or car, and here you will find characterful café-bars, restaurants and all the amenities you should need. Soller sits in the heart of the 'valley of oranges' which brought the otherwise isolated town great wealth in the nineteenth century as they exported them to France. Many locals went over to work and came back with their fortunes to build many of the Modernista architecture that can be visited today.

In the early twentieth century the narrow-gauge wooden railway train opened to transport fruit from Soller to Palma. It is now open to tourists and the 30km journey through orange groves, mountain tunnels and beautiful scenery is the perfect way to visit the magnificent city of Palma on a day trip.

You will find cafes, bars and restaurants in the magnificent main square, Plaza de la Constitucion, which is also where the tram from the port drops you off. The bustling market day on Saturday is not to be missed.



This area is a walkers paradise and many of the paths through the Serra de Tramuntana start or pass through the town. There are also many gentle walks for those less experienced yet still want to explore the beauty of this area. Bike rental is also possible and a good way to potter between the nearby villages or find more challenging routes.

Other villages in the area not to be missed include the stunningly beautiful Fornalutx in the mountains, idyllic and artistic Deia near the sea and a little further south is the rural town of Valldemossa in the heart of the Serra de Tramuntana.

Local Amenities

Nearest Airport	Palma de Mallorca (35 km)
Nearest Ferry Port	Palma Port (34.5 km)
Nearest Village	Port de Soller (1 km)
Nearest City	Palma (31 km)
Nearest Restaurant	Restaurante Agapanto Flor del Amor (250 m)
Nearest Bar/Pub	Es Mirall (100 m)
Nearest Supermarket	EuroCop (1.5 km)
Nearest Beach	Platja den Repic (500 m)
Nearest Golf	Golf de Son Termes (17.8 km)
Nearest Tennis	Sóller Tennis Club (3.2 km)

What we love

- With its stunning swimming pool and lovely sea-views from the spacious balcony, it will be hard to leave your villa despite being just a short walk away from the cafes and beaches of Port de Soller.
- Take the old style tram up to the charming village of Soller and don't miss the market day there on a Saturday.
- Charter a yacht to explore the nearby coves of this dramatic rugged coastline.

What you should know...

- While the furnishings are fairly simple...this villa is all about location, location location!
- Car hire isn't strictly necessary here due to the brilliant location but it is recommended for a day or two at least so you can explore some of the local villages and beaches.

Terms & Conditions

- **Security deposit:** €400 charged to client's credit card as a pre-authorisation at least 2 weeks prior to arrival and refunded two weeks after departure, subject to full inspection.
- **Arrival time:** 3:00 pm - 8:00 pm
- **Departure time:** 10:00 am
- **Energy costs included?:** Yes, included in the rental price.
- **Linen & towels included?:** Yes, included in the rental price.
- **Pets welcome?:** Not allowed.
- **Changeover day:** Flexible.
- **End of stay cleaning available?:** Yes. However, guests are required to leave the accommodation clean, tidy and in the same condition as on their arrival. Any extra cleaning, laundry, maintenance and/or rubbish disposal required will be charged against the security deposit.
- **Smoking Allowed?:** Smoking & Vaping are not permitted.
- **Minimum stay:** 7 nights. All other durations on request.
- **Tax:** Balearic Eco Tourist Tax of €2.20 per person per night for over 16's is not included in the rental price and will need to be paid locally in cash on arrival.
- **Internet access?:** Wi-Fi internet access included in the rental price.