

# St Peters Court

Region: The South West    Sleeps: 14

---

## Overview

The Grade II listed St Peter's Court is steeped in history and makes a one-of-a-kind base from which to explore Bristol, Somerset and all the delights the local area has to offer! Although the impressive holiday home has been renovated recently, the owners have managed to maintain its Tudor-like charm and character.

Entering the house, through the large medieval embellished door, the hallway leads through to a striking lounge with fireplace, vintage upright piano and hanging tapestry. A dining room lies just beyond an archway and provides the perfect setting for a family dinner. A modern and fully equipped kitchen is immediately next to this room. Enjoy the use of the large dual range cooker and view of the garden, whilst preparing a banquet for your guests. Also on this level is a library playroom and lounge with a 60-inch smart television. Finally, you will find the first of the six bedrooms here.

Heading upstairs guests will find the five spacious bedrooms. The first of these rooms boasts a king-sized bed and a walk-in bathroom, we can add another two singles or double to this room if needed. The second is a double room with its own lovely bathroom. Opposite this is the spacious bathroom with a walk-in shower. The third bedroom has a four-poster king-sized and a single bed. Further down the corridor, another king-sized bedroom can be found. The final bedroom is up a flight of stairs to the attic, which has a double bed and its own en-suite shower room.

Outside, at the back of the Manor, you'll find a spacious games room housed in the covered stables. It features a hot tub, table tennis, table football, and darts. Adjacent to the games room is a garden terrace and a charming rose garden. At the front of the Manor, there is a beautiful,



completely private, south-facing main garden. This is the perfect spot for dining al fresco, enjoying morning coffee, or having a barbecue.

## Facilities

Ideal for Xmas/NY • Tennis Nearby • Golf Nearby • Walk to Village • Recommended • Ideal for Kids • Cots (Cribs) • Ideal for Teens • Manor • Quirky (Unique) • <1hr to Airport • Parking Space • Walk to Restaurant • Heritage Collection • Wi-Fi/Internet • Washing Machine • Coffee Machine • Hairdryer • Tourist Towns & Villages • TV • Table Tennis • Laptop Friendly Workspace • Games Room • Indoor Games • Hot Tub • Dishwasher • Microwave • Smart TV • Table Football • Working Fireplace/Woodburner • Heating • Kid-friendly excursions • Playground nearby • High Chair(s)

# Interior & Grounds

## St Peters Court

### Ground Floor

- Well equipped kitchen
- Breakfast dining area
- Grand dining room
- Living room
- Conservatory
- Library playroom
- Utility room
- Cloakroom
- Bedroom with king-size Zip & Link bed (can be set up as twin beds)

### First Floor

- Master bedroom with king-size bed and en-suite bathroom with bath tub, WC and sink (*on request, two singles or a double can be added into this room to create a family suite*)
- Bedroom with double bed and an en-suite bathroom
- Family bathroom
- Bedroom with king-size bed and additional single bed
- Bedroom with double bed

### Second Floor (Attic)

- Bedroom with double bed and en-suite bathroom

### Exterior Grounds

- Outdoor Swing Chair
- Outdoor Dining
- Games Room with a table football, table tennis and a darts board
- Hot Tub (available between April and September)
- Private Parking

### Additional Facilities

- Bed Linens provided
- Broadband Internet/Wi-Fi
- Fireplace
- Indoor Dining
- Iron and Ironing Board
- Outdoor Dining
- Outdoor Seating
- 60-inch Smart Television
- Washing Machine/Dryer & Overhead Wooden Clothes Rack

*\*Please note that the floorplan is slightly outdated and is missing the ground floor bedroom.*



# Location & Local Information

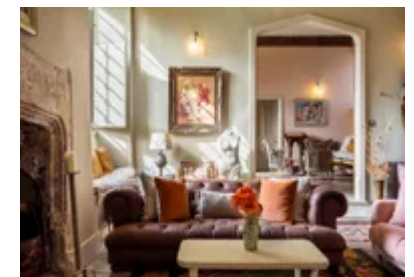
The town of Portishead is just off the coast of the Severn Estuary, Somerset. Due to its proximity and tributary, it has a rich history as a port and docking yard. There are still exquisite examples of Portishead's fine history of Victorian Gothic architecture and plenty of popular trails for keen hikers to explore. Being surrounded by the stunning countryside of Somerset, holiday makers love to visit the likes of Gordano Valley Nature Reserve, Battery Point and The Clevedon Coast Path; where Wales is visible on clear days.

For those looking to make more of the localised attractions, Portishead Marina's recent re-development means it has a host of bars, cafes and restaurants. If you're travelling with a family of children then Noah's Ark Zoo Farm, Oakham Treasures and Tynesfield & Clevedon Court are all a must visit. When holidaying in Portishead, try to time your stay with the Portishead Carnival, Flower Show or Raft Race which are all a celebration of the local heritage.

The house is an ideal base to explore the delights of Somerset. Visit enchanting stately homes such as Stourhead, Iford Manor and Bowood House and Gardens. Discover the charming and quaint English villages of Castle Combe, Frome, and Braford apon Avon. Not to mention the fabulous selection of delicious pubs and restaurant to try including The Ethicurean at Barley Wood walled garden, Roth bar and grill at Hauser and Wirth or the Talbot Inn in Mells.

## Local Amenities

Nearest Airport	<b>Bristol (14km)</b>
Nearest Bar/Pub	<b>Walking Distance</b>
Nearest Golf	<b>Clevedon Golf Club (7.8 km)</b>
Nearest Restaurant	<b>Walking Distance</b>



## What we love

- With the M5 a few minutes away, you have incredible access to the surrounding towns
- St Peter's Court has maintained its Tudor style that you and your guests won't forget
- The house is near a refurbished 12th Century Church and Conservation Area, so grab a pair of hiking boots and explore the immediate area

## What you should know...

- Make good use of the elaborate fireplaces, as the stone floors and large panelled windows can occasionally make the house a little chilly
- The games room, once a stable at the back of the house, has been transformed into a cozy retreat. Though it offers shelter, it is not heated, so be sure to bundle up if you plan to play table tennis, table football, or darts during the winter months.
- Please be aware that the Manor is connected to a smaller manor. Despite this, guests have exclusive access to private gardens and enjoy complete privacy.

# Terms & Conditions

- **Security deposit:** £1000. This is paid directly to the owner prior to arrival and will be refunded in full after departure subject to damage inspection
- **Arrival time:** 4.00 p.m.
- **Departure time:** 10.30 a.m.
- **Energy costs included?:** Yes
- **Linen & towels included?:** Yes
- **Pets welcome?:** Well-behaved dogs are welcome by prior arrangement for an additional £75/week or £50/weekend. Please ensure they stay off furniture and out of bedrooms. Enquire at booking.
- **Other Ts and Cs:** Not safe or suitable for infants (Under 2 years)
- **Changeover day:** Friday
- **End of stay cleaning:** Standard changeover clean included in the price. Guests are required to leave the accommodation clean, tidy and in the same condition as on their arrival. Any extra cleaning, laundry, maintenance and/or rubbish disposal required will be charged against the security deposit.
- **Smoking Allowed?:** No
- **Minimum stay:** Please note that there is a 3-night minimum stay. A 2 night stay might be available on request. Over Christmas and New Years, the minimum stay is 4 nights.
- **Heating costs included?:** Yes
- **Internet access?:** Wi-Fi
- **Stag & Hen Do Allowed? :** Hen Do's are accepted