

# Chateau Roussignol

Region: France Sleeps: 28

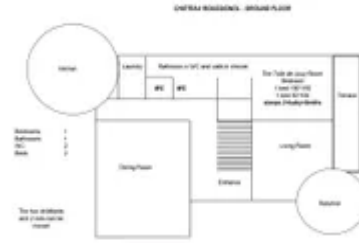
## Overview

The 15th Century Chateau Roussignol, situated in the heart of the Loire countryside, sits on a hill overlooking the famous river Creuse. The property has over 10 hectares of private grounds and lies next to a small village that has a restaurant and boulangerie. The Chateau Roussignol is ideally suited to family groups of up to 28 guests and is a great value for money.

There is a heated swimming pool, lots of games for the children and a river that runs through the bottom of the garden. A modern tennis court is ready for use just 200m away. The Pays de la Loire region is in the heart of France and is steeped in history. Through the ages this is where the French Kings built the finest chateaux and many of these historic buildings are less than an hour away, waiting to be explored. Most notably: Azay-le-Rideau, Loches, Chenonceaux, Valençay and Villandry.

## Facilities

Ideal for Kids • Fishing • Golf Nearby • Recommended • Wine Tasting • Private Pool • Walk to Village • Walking/Hiking Paths • Horse Riding • Canoeing/Kayaking • Chateaux & Castles • Ideal for Teens • Cots (Cribs) • Heated Pool • Great Value • Ground Floor Bed & Bath • Pool Safety Feature • Walk to Restaurant • Heritage Collection • Wi-Fi/Internet • Waterfront • Rural Location • Outdoor Pursuit & Activities • Tourist Towns & Villages • TV • Table Tennis • Games Room • Indoor Games • DVD • Outdoor Games • Table Football • Animal farm • Working Fireplace/Woodburner • Heating • Caretaker/Owner on Site • Board games • Children's videos/DVDs • Children's books • Xbox/Playstation/Wii • Swings • Trampoline • Slide • Badminton • Ideal for Babies & Toddlers • Pool inflatables • Mattress protector • Plastic crockery • Baby bath • Bottle steriliser • High Chair(s) • Fenced Grounds



# Interior & Grounds

The chateau was initially built in the 15th century, with some additions being made in the 19th Centuries, and sits on a hill with spectacular views over the River Creuse.

## Chateau Interior

### Ground Floor

A large living/dining room with a huge fireplace and table with seating for up to 20. An additional sitting room comes with TV, Hi-Fi, home cinema system, karaoke and table-football. The fully equipped kitchen comes with oven, 5 gas cooker, microwave, dishwasher and two fridge/freezers. There is a double bedroom leading on to a terrace with an en-suite bathroom. There is also a downstairs loo and a utility room with professional dishwasher (3 min cycle) and a washing machine.

### First Floor

The master bedroom suite has a double bed and en-suite bathroom connecting to a small twin bedroom with a bunk-bed. There are also two further double rooms, one with en-suite with a walk in shower, wash basin and loo, two twin bedrooms (one with en suite bathroom and possibility to join the beds) and an additional bathroom with bath, wash basin and loo.

### Second Floor

A further master bedroom has a double bed with en-suite bathroom. There are 2 further double bedrooms (one with en suite bathroom), a twin bedroom, a dormitory bedroom with three bunk-beds and an en-suite loo and bathroom and an additional bathroom with bath, sink, and loo. Two cots & two child beds are available.

There is Wi-Fi access available at the property, suitable for watching TV on the internet.

## Outside Grounds

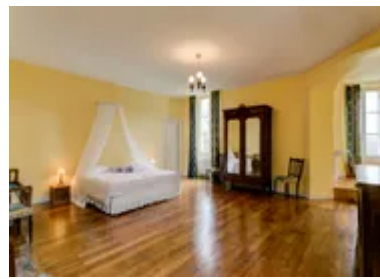
Outside there is a rear terrace, fenced gardens, and over 10 hectares of grounds with a river that runs at the bottom of them. There is also lots of garden furniture, a barbecue, and a tennis court less than 200m away.

For the children, there is a wide range of games available in the pool house including boules, volleyball, badminton and football etc. There is also a table tennis table situated a few yards from the pool.

The heated swimming pool (size: 11m x 5m, with a maximum depth of 1.8m) has a safety cover, which closes hermetically and a staircase going down in the water, with a large top step, allowing space for small children to play. It is close to the summer kitchen and terrace.

The summer kitchen has a fridge/freezer, large gas cooker and electrical oven, a dishwasher and a WC. The terrace has an awning which can be opened and closed for protection from the sun or the rain.

There is dining space for up to 30 guests next to the pool on 3 large tables and it is also possible to dine on the terrace with a beautiful view on the river



Creuse...

The barbecue and the plancha are next to the summer kitchen. Several small tables and chairs are placed around the house, giving maximum options for finding sun or shadow.

# Location & Local Information

The nearest airport is Poitiers (70km away). The chateau sits on the edge of the small village of Ciron with boulangerie for your bread and croissants in the morning. Le Blanc is the nearest town of a reasonable size 14km away. It is very attractive and has some excellent restaurants.

Ciron is located in the heart of a Regional Parc – La Brenne – South West of the Berry area, one of the regions of the Centre Val de Loire region. Therefore it is at the corner of three different areas: Berry, Limousin and Poitou-Charentes. There will be a number of travel books in the cupboard close to the kitchen entrance door to inform you of possible venues to visit. The Michelin travel book "Châteaux de la Loire" is an ideal guide on which to build your itinerary. However if you don't want to travel too far then there is always the pool to lounge beside!

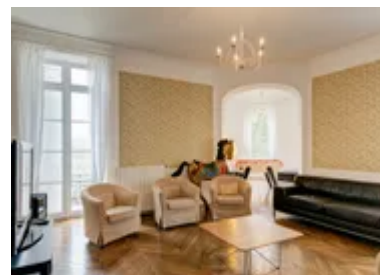
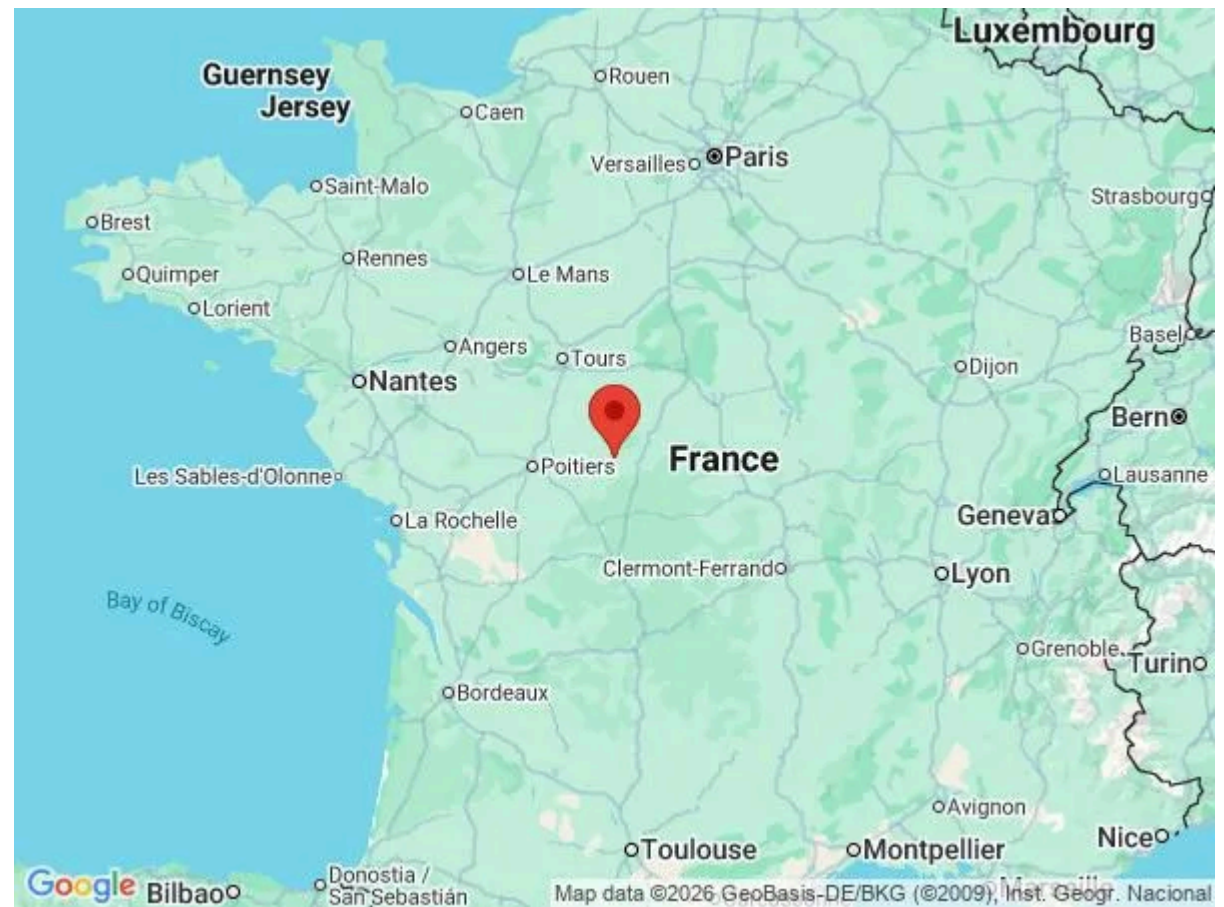
Poitiers is about 75km from the chateau. It is an interesting and attractive city that is worth a visit for the famous Le Futuroscope.

The main area of interest to be found nearby is the Regional Parc, La Brenne, which has over 7500 hectares of lakes and ponds and a few villages that are worth a visit. La Brenne is a marvellous place to walk and fish. Main areas of interest are the Etang de Bellebouche, le Château du Bouchet and l'Etang de la Mer Rouge.

Local activities include golf (there are 2 golf courses in the vicinity), tennis (5 minutes walk), horse riding (10km away) and cycling.

## Local Amenities

Nearest Airport	<b>Poitiers (70km)</b>
Nearest Supermarket	<b>Le Blanc (14km)</b>
Nearest Town/City	<b>Le Blanc (14km)</b>
Nearest Restaurant	<b>Ciron (walking distance)</b>
Nearest Bar/Pub	<b>Ciron (walking distance)</b>



## What we love

- Great value for money for such a cool looking chateau.
- Endless supply of on site fun to be had for kids and adults alike.
- The local boulangerie is just a short walk away for your morning bread and croissants.

## What you should know...

- Bring your own pool towels or you can hire them on site!

# Terms & Conditions

- **Security deposit:** €1500. This amount should be paid before arrival to the owners' bank account or it can be paid in cash upon arrival directly to Mme Despinoy. It will be refunded in full 3 weeks after departure, subject to damage inspection. The bank details will be supplied to you after reservation.
- **Arrival time:** 5.30 p.m.
- **Departure time:** 10 a.m.
- **Energy costs included?:** Energy costs are charged to expenditure. In case the house is heated, the cost will be about 70 euros per day of heating. Obviously heating is not usually needed in the summer!
- > **If not included, what are they?:** 90€ per night in winter.
- **Linen & towels included?:** All bed linen included in the rental price. Bath towels are available at €8 per person (for a set of one large and one small towel).
- **Pets welcome?:** Not allowed.
- **Other Ts and Cs:** The pool is open approximately May to September. Although the chateau is set within its own private grounds, it is located in a village - so please try and keep noise to a minimum outside the chateau after 11 p.m.
- **Changeover day:** Saturday approximately mid-July to late August. Any day (except Saturday and Sunday) during all other periods.
- **End of stay cleaning:** Extra €600, payable locally. Guests are required to leave the accommodation clean, tidy and in the same condition as on their arrival. Any extra cleaning, laundry, maintenance and/or rubbish disposal required will be charged against the security deposit.
- **Smoking Allowed?:** Outside only.
- **Insurance:** It is recommended that all guests take out insurance to cover against potential cancellation and any accidental damage caused during your stay at the property.