

# Chateau Des Joyaux

Region: France    Sleeps: 50

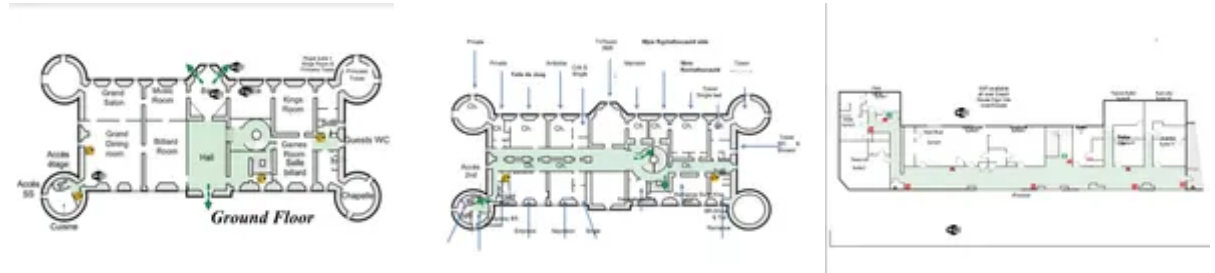
## Overview

This magnificent château in the Loire Valley is known as "Petit Chambord", for its resemblance to the royal palace in Loir-et-Cher. Built in 1854, it's now the site of truly grand weddings or special occasions, where guests stay in luxurious suites or beautiful rooms and can have daily meals prepared if you wish. Your on-site concierge, Cynthia, will welcome you warmly - ask her about arranging horseback rides or spa services (or both!).

For weddings, whether you hold your nuptials in the private chapel or in the gardens, this château's French Renaissance architectural details will make your photos unforgettable. The splendour continues inside, where masterfully carved wood panelling and hand-painted ceilings bring you back in time. Opulence pervades not only every room, but also the grounds, where the private lake is a romantic spot for a walk.

This is also a splendid venue to spend time with loved ones, perhaps for a special occasion when exquisite meals using the finest local ingredients from the Loire Valley can be prepared for you by the private chef. The stunning 10-bedroom Coach House even has its own dancing hall and bar. Everything from breakfasts, brunches and barbecues to gala dinners can be arranged to make your stay a truly unique event in the most historic and beautiful surroundings.

This holiday, wedding and events château is located only 40 minutes from the town of Angers, where you should tour the famous Cointreau factory. A ride on the TGV will bring guests to or from Paris in 1.5 hours. The Loire Valley is famous for wine and châteaux- since you have one already, set off in search of the vineyards. The wineries surrounding Saumur produce excellent sparkling wine...a toast is in order!



## Facilities

Ideal for Kids • Weddings • Catered Villa • Chateaux & Castles • Cycling • Historical Sites • Horse Riding • Walking/Hiking Paths • Walk to Village • Ideal for Parties • Wine Tasting • Fishing • Golf Nearby • Maid Service Included • Chapel on Site • Chef/Cook Included • Ideal for Teens • Cots (Cribs) • Marquee Hire Permitted • Wow Factor • Outdoor Ceremony • Instagrammable • Ground Floor Bed & Bath • Walk to Restaurant • Heritage Collection • Parking Space • Wi-Fi/Internet • Allow Fireworks • Rural Location • Indoor Reception Available • Outstanding Landscapes • Coffee Machine • Outdoor Pursuit & Activities • Hairdryer • Tourist Towns & Villages • TV • Pool/Snooker • Table Tennis • Laptop Friendly Workspace • Games Room • Indoor Games • Outdoor Games • Table Football • Working Fireplace/Woodburner • Heating • Zoo • Ruins • Kid-friendly museum • Kid-friendly excursions • Theme park • Catering Available • Breakfast Available • Babysitting Available • On-Site Concierge • Ideal for Babies & Toddlers • High Chair(s)

# Interior & Grounds

*Please note that Château Des Joyaux is not self-catered and there are no kitchen facilities for guests (cool storage is available for drinks and snacks on request). The private chef is able to prepare meals but please note that food & beverages are an extra cost, on request.*

- 1) Château and Gatehouse (up to 30 guests, mid-week bookings only)
- 2) Château, Gatehouse and Coach House (up to 50 guests)

## Château Interiors (25 guests)

### Ground Floor

- Entrance hall
- Grand Salon living room
- Music Salon
- Grand dining room
- Billiard room
- Chapel
- 2-bedroom Suite (for up to 6 guests) with four poster king-size double bed. Annexed with a tower bedroom with one double bed and two single four poster beds. Bathroom with bath and Italian shower

### First Floor

- Suite with four poster king-size double bed and ensuite shower room
- Suite (for up to 3 guests) with four poster king-size double bed and adjoining room with four-poster single day bed. Has use of separate shower room in the north-east tower
- Suite (for up to 4 guests) with queen-size canopy double bed and bath tub. Ensuite shower room and adjoining bedroom with double bed
- Suite (for up to 3 guests) with four poster double bed and adjoining single room with day bed. Has use of separate shower room in the north-east tower
- Suite with four poster king-size bed and spacious ensuite bathroom with rolltop bath and walk-in shower
- Suite (for up to 3 guests) with four poster king-size bed and adjacent room with single bed. Shower room with WC
- Suite with tall four poster king-size double bed, ensuite shower room
- Additional bedroom if needed (no bathroom)

## Gate House Interiors (for up to 5 guests)

### Ground Floor

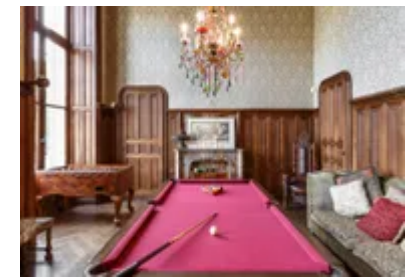
- Kitchen and living room
- Bathroom

### First Floor

- Large double bedroom with king-size double bed and single bed
- Small double bedroom

## Coach House Interiors (20 guests)

- Dance hall and bar



- Double bedroom with queen-size bed and ensuite shower room
- Double bedroom with king-size bed and ensuite shower room
- Double bedroom with king-size bed and ensuite shower room
- Double bedroom with king-size bed and ensuite shower room
- Family room (4 guests) with king-size double bed and two twin beds plus ensuite shower room
- Double bedroom with king-size double bed and ensuite shower room
- Double room (3 guests) with queen-size double bed and day bed. Ensuite shower room
- Double room with queen-size bed and ensuite shower room
- Double room with king-size bed and ensuite shower room
- Double room (3 guests) with queen-size bed, sofa-bed and ensuite shower room

*One Coach House bedroom is on the ground floor, suitable for guests with restricted mobility*

#### **Outside Grounds (72 acres)**

- Manicured gardens
- Lawns, fields and woodland
- Lake with bridges
- Majestic trees and seating areas
- Helicopter landing
- Memorial Tower
- Gate House

#### **Facilities**

- Steamers in all bedrooms

# Location & Local Information

The château is 30 Minutes from Angers, 1 hour from Nantes and 90 Minutes from Paris via TGV. The nearest airports are Nantes International and Paris CDG.

Local activities include wine tasting, gastronomy, and exploring the beautiful chateaux of the Loire Valley. The chateau is only 30 minutes from Chateaubriand.

## Local Amenities

Nearest Airport	Nantes (81-90 km)
Nearest Ferry Port	St Malo (Over 100 km)
Nearest Town/City	Cande (8 km)
Nearest Restaurant	Auberge La Diligence (5km)
Nearest Bar/Pub	In local village (200m)
Nearest Beach	La Boule (Over 100 km)



## What we love

- This château in Loire Valley is built to impress: the 45m limestone walls contain 365 windows and 12 turrets
- The suites in the main château are each unique - we especially love the Romance Suite with its ornate four-poster bed, tall windows and original vaulted ceiling
- Loire Valley is known for its crisp, fruity white wines - be sure to visit the vineyards in Saumur

## What you should know...

- Please note the château is not self-catered and the kitchen is not available to guests, however housekeeping and a chef are included in the rates, but food & beverage is charged extra.
- Please refer to the 'Features' tab for full details of bedrooms and layout
- You can hear the town church bells in the morning from the front bedrooms... but this adds to the charm!
- Please be aware that there are hunting trophies in the 'hunting room'

# Terms & Conditions

- **Security deposit:** €1000 paid in cash to the owner upon arrival and refunded upon departure, subject to full inspection.
- **Arrival time:** 4.00 p.m. Bag assistants are included for your arrival.
- **Departure time:** 12.00 p.m. A later check-out is possible on request subject to a charge of €500 per hour, payable locally.
- **Energy costs included?:** Yes.
- **Linen & towels included?:** Yes.
- **Pets welcome?:** Not allowed.
- **Other Ts and Cs:** Please note the château is not self-catered and the kitchen is not available to guests, however housekeeping and a chef are provided (food & beverage charged extra). Weddings and other celebrations are on request only and subject to prior arrangement with the owner and additional charges.
- **Changeover day:** Flexible.
- **End of stay cleaning available?:** Yes, standard changeover clean included. Guests are required to leave the accommodation clean, tidy and in the same condition as on their arrival. Any extra cleaning, laundry, maintenance and/or rubbish disposal required will be charged against the security deposit.
- **Smoking Allowed?:** Outside only.
- **Insurance:** It is recommended that all guests take out insurance to cover against potential cancellation and any accidental damage caused during your stay at the property.
- **Minimum stay:** 2 nights.
- **Heating costs included?:** Extra 15% surcharge on the rental price for heating in winter, paid locally.