

Chateau Cendrillon

Region: France Sleeps: 15

Overview

Stay in a family-owned French château in the Loire valley, a wonderful historic abode whether relaxing with family or friends, around half an hour from the Pays de Loire town of Cholet.

As seen on *Escape To The Château*, Château Cendrillon is set in 20 acres of rural parkland which affords guests ample space alongside a high degree of privacy. The estate also features a seasonal heated outdoor swimming pool, surrounded by a poolside terrace and sun loungers.

The interiors are traditional and welcoming. Step in to the lounge with its comfortable sofas, satellite TV and DVD player whilst children play in the games room with toys, table tennis and other family-friendly activities. On the other side of the château, the kitchen is brilliantly equipped for keen cooks or hire a private chef to prepare feasts to be served beneath the chandelier in the formal dining room.

Château Cendrillon sleeps a maximum of 15 guests. There are flexible sleeping arrangements over the nine bedrooms on the first and second floors, eight of which feature their own bath or shower room. The master double with its turret bathroom is especially impressive whilst there is also a first-floor double accessed via a lift, ideal for members of your party who may struggle with the stairs. Finally, the top-floor is also home to a mirrored fitness studio with gym equipment.

Indeed, this French château has been restored to a lovely condition, and while it retains the feel of a traditional French château, it also provides guests with a great level of comfort and superb range of amenities.

Less than an hour from Nantes Airport and easily reached from ferry ports of north-western France, this is a superb base for discovering the local surroundings as well as exploring further afield across the Loire valley, known as the 'Garden of France' with its meandering river, cycling trail, grand châteaux and vineyards.

Facilities

Walking/Hiking Paths • Ideal for Kids • Chateaux & Castles • Horse Riding • Historical Sites • Tennis Nearby • Golf Nearby • Private Pool • Cycling • Recommended • Wine Tasting • Chef/Cook Available • Maid Service Available • Cots (Cribs) • Ideal for Teens • Heated Pool • <1hr to Airport • Pool Safety Feature • Heritage Collection • Parking Space • Wi-Fi/Internet • Rural Location • Washing Machine • Outstanding Landscapes • Hairdryer • Outdoor Pursuit & Activities • Tourist Towns & Villages • Pool/Snooker • Table Tennis • Lift • Games Room • Indoor Games • DVD



• Bicycles Provided • Gym/Fitness Room • Dishwasher • Microwave •
Satellite TV • Table Football • Working Fireplace/Woodburner • Heating •
Board games • Children's videos/DVDs • Children's books •
Xbox/Playstation/Wii • Pool inflatables • Mattress protector • Plastic
crockery • High Chair(s)

Interior & Grounds

Château Interiors

Ground Floor (some steps)

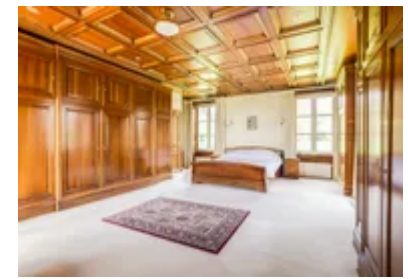
- Entrance hall
- Living room with three sofas, satellite TV, DVD player and iPod docking station
- Games room with table tennis, PlayStation, board games and children's toys and games
- Dining room with table for 14-16 guests
- Kitchen, fully-equipped including breakfast bar, table (for 8-10 guests), electric range oven, gas hob, croissant oven griddle plate, microwave, fridge, freezer, dishwasher, mixer/blender and pantry
- Laundry room (in turret) and wine fridge
- Porch
- Shower room and WC
- Guest WC

First Floor

- Master bedroom with double bed, small balcony and en suite bathroom (in turret) with shower and WC
- Family bedroom with queen-size double bed, two single beds and en suite bathroom with bath, shower and WC
- Bedroom with king-size double bed and en suite wet room with shower, sink and WC (accessed via a lift in turret)
- Bedroom with double bed and shower room
- Bedroom with double bed, balcony and en suite bathroom with bath, shower and WC
- Bedroom with twin beds and en suite bathroom with bath and shower
- Bedroom with double bed and en suite bathroom with bath, shower and WC

Second Floor

- Bedroom with twin beds
- Bedroom with double bed and en suite bathroom with bath, shower and WC



- Mirrored fitness studio with gym equipment and shower room
- Owner's quarters (unoccupied, no access to guests)

Outside Grounds (20 acres)

- Heated swimming pool (5x12m) with electric cover and access via childproof gate. Heated via heat air source. Open approximately May to September.
- Sun loungers
- Built-in barbecue
- Parking
- Electric gate
- Parkland (20 acres)
- Old ruins (not accessible to guests)
- Two ponds

Other Facilities

- Lift (direct access to one first-floor double bedroom)

Location & Local Information

In the Maine-et-Loire department of western France, Château Cendrillon is less than an hour from Nantes Airport and only 212km from St Malo's ferry port.

There is a small rural village around 1.5km away whilst the nearest amenities can be found in Villedieu-la-Blouère (3km) with its bakery, small supermarket, café and bar. Saint-Macaire-en-Mauges (6km) is larger with a small handful of restaurants, tennis courts and other useful facilities whilst Cholet (20km) is a small town with everything else you may need including a hypermarket and leisure centre with swimming pools and an ice-rink.

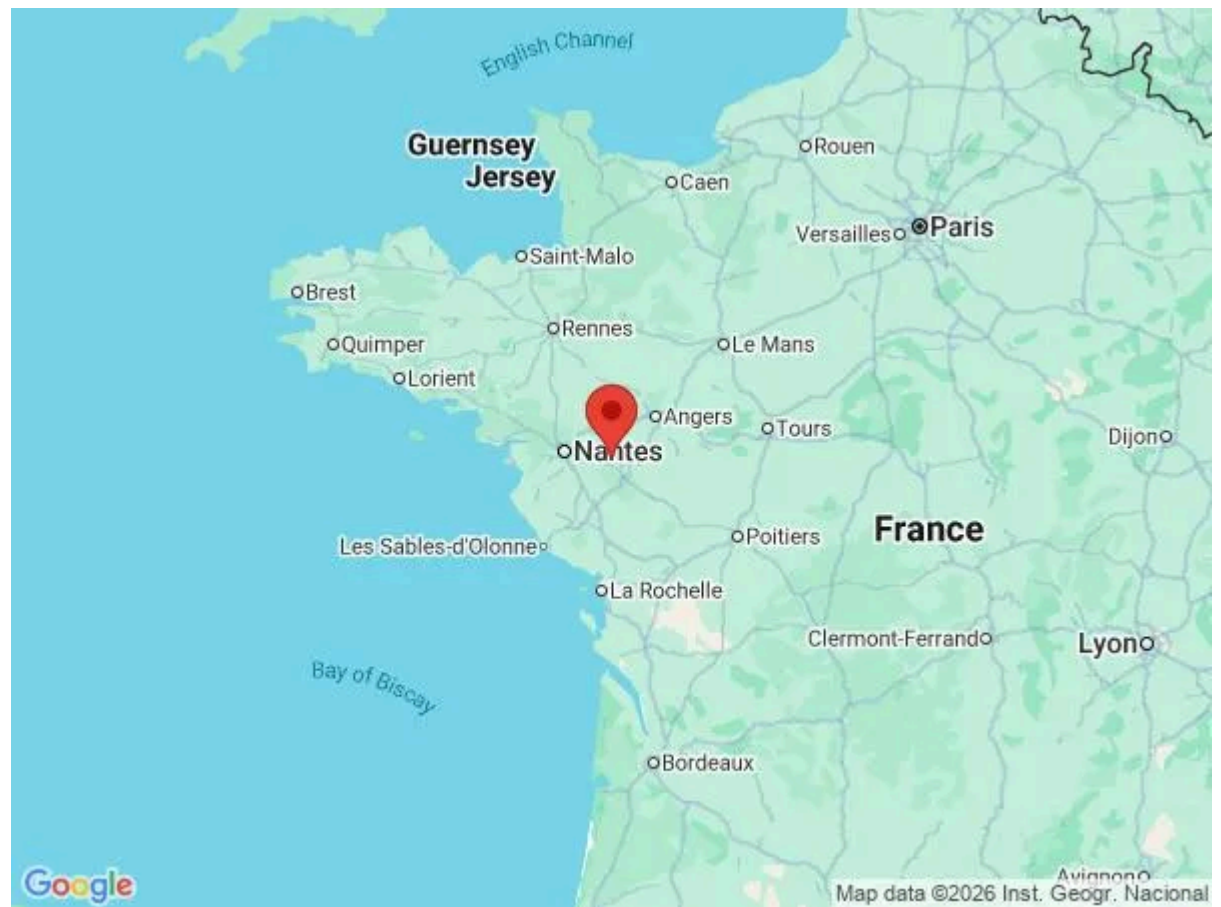
Clisson (25km) is a medieval town which has a popular food market on Fridays and is a picturesque place to wander around. It has a ruined château open to the public.

Shoppers will be thrilled to discover La Séguinière (18km), an enormous factory outlet village, home to 80 major brands, from fashion and sports to kitchenware, as well as a chocolate shop which offers free samples.

The Japanese Gardens (Parc Oriental) at Maulévrier (33km) are a wonderful place to visit for all ages. Originally built in 1899 but then left to decay, a restoration programme started in the 1980's has resulted in stunning garden filled with Japanese architecture, bridges, water features and traditional Japanese trees. The gardens are the largest of their kind in Europe.

One of France's major tourist attractions, Le Puy du Fou (43km), is less than an hour away. Its medieval themed 'park' includes an impressively large Roman amphitheatre with chariots, fighting gladiators, jousting knights on horseback, falconry and much more. In the summer they have evening sound and light shows.

This is also great base for exploring further afield across the Loire valley with its beautiful river and grand châteaux. It goes without saying that there are many vineyards in the Loire region which you can visit for wine tastings, and they



range from large commercial wineries to small farms.

Try the sparkling white wine in the vineyards surrounding Saumur (92km) and visit the historic town's château and Cadre Noir equestrian school. Not far from here is the Rochemeiner troglodyte dwellings and the impressive Zoo de Doué, home to 500 animals and located in an old quarry.

Cyclists can take advantage of the '*Loire á vélo*' and there are many bike rental places along the route for those who haven't brought their own bicycles with them. The trails are easy to follow, and it is a carefree way to pass the day through the unspoiled rural towns and villages of the Loire Valley.

Local Amenities

Nearest Airport	Nantes Airport (55km)
Nearest City	Nantes (48km)
Nearest Ferry Port	St Malo (212km)
Nearest Golf	Golf De Cholet (20km)
Nearest Restaurant	Saint-Macaire-en-Mauges (6km)
Nearest Supermarket	Intermarché Contact (2.5km)
Nearest Tennis	TC Macairois (6km)
Nearest Town	Cholet (20km)
Nearest Train Station	Gare de Cholet (20km)
Nearest Village	Small rural village (1.5km)

What we love

- Nearly every bedroom has its own en suite bathroom and one even has its own lift to avoid the stairs
- A private chef can be arranged to create wonderful meals to be served al-fresco or beneath the chandelier in the formal dining room
- Set in 20 acres of parkland, it's great that the heated swimming pool is surrounded by hedges and reached via a child-safe gate
- Families will love the toys, books and games in one of the two lounges
- This is a great base for exploring the Loire valley, also known as the 'Garden of France'

What you should know...

- There are also four portable beds available on request – please enquire.
- For guests with restricted mobility, there is a lift that goes directly to one of the first-floor double bedrooms. However, please note there are some steps across the ground floor of the château and some narrow doorways means that the château is not fully suitable for wheelchair users.
- Please also note that the lift is only to be used by guests with restricted mobility (and to help with luggage).
- Children will need supervising across the vast grounds as there are two ponds and ruins (not accessible to guests).
- Car hire is essential across this rural area.

Terms & Conditions

- **Security deposit:** £1000. This is paid directly to the suppliers in line with the supplier's contract 4 weeks prior to arrival and will be refunded in full after departure subject to compliance with of the terms and conditions of the supplier's contract.
- **Arrival time:** 4.00 p.m.
- **Departure time:** 10.00 a.m.
- **Energy costs included?:** Included in the rental price.
- **Linen & towels included?:** Bed linen and towels are provided and will be changed weekly. Swimming towels are not provided.
- **Pets welcome?:** No pets allowed.
- **Other Ts and Cs:** Guests will be required to sign a copy of the owner's rental terms upon confirmation of their booking. Weddings, stag/hen parties and any special events are not allowed. A highchair and cot are available on request.
- **Changeover day:** Saturday. All other changeover days on request.
- **End of stay cleaning:** Standard changeover clean included in the price. Guests are required to leave the accommodation clean, tidy and in the same condition as on their arrival. Any extra cleaning, laundry, maintenance and/or rubbish disposal required will be charged against the security deposit.
- **Smoking Allowed?:** Not allowed.
- **Insurance:** It is recommended that guests are in possession of a valid insurance policy, which covers them for cancellations, loss of personal belongings, personal liability and any accidental damage caused during their stay. Furthermore, the owner's insurance does not cover guest's personal property.
- **Minimum stay:** 7 nights. All other durations on request.
- **Pool heating charge?:** Please note that like all heated pools, pool heating and water temperature are reliant on weather and outside temperatures.
- **Tax:** French Visitors Tax is included.
- **Pool opening dates?:** The swimming pool is open approximately May to September. Please note that pool opening dates are subject to local weather conditions and pool maintenance requirements and that cooler months may not be suitable for swimming.