

Chateau Du Monastere

Region: France **Sleeps:** 20

Overview

Listen to the church bells from the local village as you relax in the idyllic and historical surroundings of Château du Monastère in the Berry region, in the heart of the Loire. Set in 32 acres of stunning gardens and parkland, with a heated pool in the château's orchard, the eight bedroom château offers beauty, serenity and elegance.

The château was built in 1835 on the site where there used to be a Benedictine monastery and the château's orchard dates back to this time. Great care has been taken to ensure it retains its history and character whilst offering modern luxury living standards. The eight bedrooms have been designed gracefully using colourful rich fabrics, warm tones, beautiful furnishings and bright, modern bathrooms. There are three double bedrooms on the ground floor, all with en-suite bathrooms including walk-in showers and a further five double bedrooms upstairs, four of them en-suite and two of them adjoining, therefore offering rooms to suit travelling companions of all ages.

The cosy ground floor living room is a perfect spot for relaxation or head upstairs to browse the vast selection of books in the library, also a comfortable salon for guests to enjoy. The rustic French kitchen has everything you need to prepare fine local cuisine and there is also the option to hire a private chef to cook for you in the evenings and serve you memorable meals in the grand dining room.

The heated swimming pool and terrace is set in the vast gardens and parkland where you will also find shady trees for lounging in the sun, ideal picnics spots and so much room for kids to play in the open space. The setting is truly idyllic and it will feel like your own patch of paradise.

The local village is a short walk or bike ride away where you can pick up fresh bread in the mornings. Head a little further to other local villages and towns where you will find vibrant French markets within a ten minutes drive, stunning châteaux open to visitors as well as the historic cathedral city of Bourges, just 35km by car. The magical gardens of Apremont sur Allier are also within half an hour and offer a delightful day out discovering flowers, trees and plants from all over the world.

Sport lovers are spoilt for choice with a great range of activities nearby including fishing, horse-riding, windsurfing and some lovely cycle rides along the banks of the Loire or canal tow paths, following the 'Loire a Velo' routes.

Whether you plan to explore the rich culture of the Loire or simply unwind in the glorious surroundings of your holiday home, Château du Monastère will provide wonderful experiences and memories for everyone for years to come.



Please note that advertised prices are for 16 guests. An additional four children may be accommodated by prior agreement with the owner and supplements may apply. Alternatively, additional adults may also be considered on a case by case basis, subject to supplements.

Facilities

Chef/Cook Available • Weddings • Great Value • Chateaux & Castles • Wi-Fi/Internet • Golf Nearby • Walk to Village • Rural Location • Indoor Games • Bicycles Provided • Cots (Cribs) • Heritage Collection • Board games • Babysitting Available • Recommended • Private Pool • Pool Safety Feature • Heated Pool • Bikes • Boules/Petanque • Ideal for Kids • Ideal for Teens • Pets on Request • Dishwasher • Microwave • Hairdryer • Ground Floor Bed & Bath • Satellite TV • Outdoor Games • Heating • High Chair(s) • Walking/Hiking Paths • Cycling • Horse Riding • Go-Karting • Fishing • Outstanding Landscapes • Outdoor Pursuit & Activities • Tourist Towns & Villages • Historical Sites

Interior & Grounds

Château Interior (750 sq m) - 16 pax

Please note an additional four children may be accommodated in the existing rooms (using one of the doubles in the first floor twin room and two additional single beds elsewhere). This is by prior agreement with the owner and supplements may apply. Alternatively, additional adults may also be considered on a case by case basis, subject to supplements.

Ground Floor

- Kitchen-diner with including dishwasher, three ovens, microwave and kitchen equipment
- Dining room
- Lounge
- Bedroom 1 with king size bed (150cm x 200cm) and extra large en-suite bathroom with bathtub and walk-in shower
- Bedroom 2 with king size bed (150cm x 200cm) and en-suite bathroom with seat, bathtub and walk-in shower
- Bedroom 3 with king size bed (150cm x 200cm) with bathroom with bathtub and walk-in shower in adjoining room

First Floor

- Lounge/Library
- Bedroom 4 with queen size bed (160cm x 190cm) - *shares bathroom with bedroom 5, ideal for families*
- Bedroom 5 with standard double bed (140cm x 190cm) - *shares bathroom with bedroom 4, ideal for families*
- Shared bathroom with shower and free-standing bath
- Bedroom 6 with 2 x double beds (140cm x 190cm) and en-suite shower and free-standing bath (one extra bed available)
- Bedroom 7 with super king size bed (180cm x 200cm), en-suite shower and free-standing bath
- Bedroom 8 with super king size bed (184cm x 210cm), en-suite shower and free-standing bath

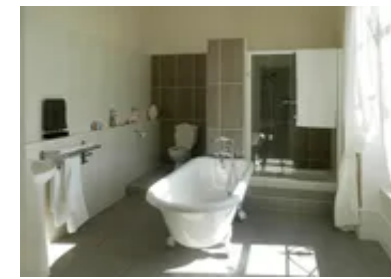
Note: 2 additional single beds are available to be placed in bedrooms as required

Outside Grounds

- 32 acres of enclosed parkland, orchard and fields
- Private heated swimming pool (size: 10m x 5m/depth 0.5m-2m/opening times: 9am to 7.30pm) with rigid security cover
- Paved al-fresco dining area with BBQ

Facilities

- Wi-Fi (ground floor only)
- Heating
- Satellite TV
- Library
- Hairdryers
- Board games and jigsaws
- Bikes



- Barbecue
- Sunbeds and parasols

Location & Local Information

Set in 32 acres of beautiful gardens and parkland, including the former monastery's original orchard, it's just a short stroll from the small local village (1km) where you can pick up your morning bread.

Just over two hours from Paris, this is a sleepy and peaceful area and there are some wonderful towns to explore locally. You will be sure to find a vibrant French market nearly every day at one of the nearby villages or towns within a fifteen minutes drive.

The area of Berry offers an extremely diverse choice of tourist attractions, including the seven secret gardens, most of which are within an hours drive of the chateau. The magical gardens of Apremont sur Allier (29km) are particularly noteworthy and offer a delightful day discovering flowers, trees and plants from all over the world.

Sport lovers are spoilt for choice with a great range of activities nearby including fishing, golf, horse-riding, windsurfing and some lovely cycle rides along the banks of the Loire or canal tow paths, following the 'Loire a Velo' routes. The world famous racing circuit of Magny Cours (44km) is just forty minutes by car, a definite must for Formula One fans and you will find some brilliant go-karting here as well.

The exquisite cathedral city of Bourges (34km) can be easily reached within half an hour and if you visit in the spring be sure to check out the city's music festival in April. The city is rich in historical and architectural delights and you can spend a very pleasant day wandering around its narrow cobbled streets discovering pretty cafes in charming squares or exploring the city's peaceful gardens. Nevers (44km) is also an interesting town to visit with stylish shops and lovely walks or boat trips along the Loire.

Whether you are a wine lover or just appreciate beautiful scenery, the wine region and village of Sancerre (55km) should also be visited. The medieval hilltop town has some delightful cafes, bistros and wine-tasting caves or head out to one of the outstanding vineyards to try one of France's most popular wines.

Local Amenities

Nearest Airport	Tours Val de Loire Airport / Aéroport de Limoges (199 km/225 km)
Nearest Village	(1km)
Nearest Town/City	Bourges/Nevers (34km/44km)
Nearest Restaurant	(5km)
Nearest Bar/Pub	(1km)



Nearest Golf	(20km)
Nearest Train Station	Bourges/Nevers (34km/43km)
Nearest Supermarket	(5km)
Nearest Ferry Port	Calais (545km)

What we love

- The château has been styled with great elegance and offers a warm and inviting ambience
- 32 acres of beautiful and peaceful gardens surround this magnificent château, including the monastery's original orchard, and it is nestled in the beautiful Loire and Berry regions
- A private chef can be hired to serve you excellent cuisine in the comfort of your dining room
- The whole area is very rich in culture, with the stunning cathedral city of Bourges being just 36km away, not to mention the closeness to the wine growing region of Sancerre and its beautiful hilltop Sancerre village
- All bathrooms on the ground floor have walk-in showers, being ideal for grandparents
- Colourful local French markets can all be explored in the many villages and towns within 10 minutes drive.

What you should know...

- The heated swimming pool is set by the orchard in the beautiful gardens, a little walk from the château: children must be supervised at all times
- The château sleeps up to sixteen comfortably, with the possibility of accommodating up to 4 additional guests for an extra charge. Please refer to the 'Features' tab for full accommodation details
- Bookings in low season, typically during the months of January, February, March, September and October are on request only. Please enquire for a tailor made quote
- Please note that the following out of season dates are available, and pricing is on request:
 - 25.10.2025-19.12.2025

Terms & Conditions

- **Security deposit:** €1500 paid by bank transfer to the owner at least one month before arrival and refunded approximately 2 weeks after departure, subject to inspection.
- **Arrival time:** 4.00 p.m.
- **Departure time:** 10.00 a.m.
- **Energy costs included?:** Yes.
- **Linen & towels included?:** Yes, including pool towels. There is a surcharge of €25/week for each child above 16 guests.
- **Pets welcome?:** Well behaved dogs may be permitted, subject to prior agreement with the owners. There will be a charge of €25 per dog, payable locally.
- **Other Ts and Cs:** The pool is open from May to end of October. Weddings may be allowed on request. Stag/hen parties and other celebrations are not permitted. Please note that advertised prices are for 16 guests. An additional four children may be accommodated by prior agreement with the owner and supplements may apply. Alternatively, additional adults may also be considered on a case by case basis, subject to supplements. Please note that the following out of season dates are available, and pricing is on request: 26.10.2024-20.12.2024, 05.01.2025-07.02.2025, 08.03.2025-28.03.2025, 25.10.2025-19.12.2025
- **Changeover day:** Saturday approximately June to end-October. Flexible during all other periods.
- **End of stay cleaning available?:** Yes. However, guests are required to leave the accommodation clean, tidy and in the same condition as on their arrival. Any extra cleaning, laundry, maintenance and/or rubbish disposal required will be charged against the security deposit.
- **Smoking Allowed?:** Outside only.
- **Insurance:** Guests are required to be in possession of a valid insurance policy, which covers them for cancellations, loss of personal belongings, personal liability and any accidental damage caused during their stay.
- **Minimum stay:** 7 nights approximately June to end-October. 3 nights during all other periods.
- **Heating costs included?:** No. A surcharge for heating will be applied dependant on usage.
- **Pool heating charge?:** No.