

Chateau Les Douves

Region: Normandy Sleeps: 14

Overview

With style reminiscent of a miniature Versailles, this striking chateau in Normandy conjures the grandeur of the 17th and 18th centuries from the moment you approach it through the tree-lined driveway. The chateau effortlessly combines classic touches (from the stonework in the garden to the Aubusson carpets and even an original c17th backgammon set), with the modern amenities you expect, such as jetted tubs, Nespresso machine, widescreen TV (with Netflix and DVD) and the heated pool, to name just a few.

This is no dark and dreary castle - large windows on both sides of the chateau let light stream in throughout the day. Sportsmen and women can compete on the private tennis court, do some laps in the pool, fish in the moat, and bicycles are also available for anyone wanting to leave the extensive grounds. The beach at Fontenay-Sur-Mer for example is within easy biking distance.

Through the gardens, 100m away from the main chateau, is a separate cottage that's perfect for a small family who prefers more privacy.

Here, your family chateau holiday includes the best of both worlds: peaceful French countryside, with access to historic sites. Only 15 minutes away WWII history comes to life in the town of Sainte-Mère-Église and Utah Beach, the site of the D-Day landing. Cherbourg & Caen are the nearest port and airport, but it is also convenient to drive from Paris, over 3 hours away.

Please note this property is available for groups of up to 14 guests when renting the chateau and the cottage. For smaller parties of up to 10 guests, the chateau on its own can be rented at a reduced price.

Facilities

Chateaux & Castles • Historical Sites • Horse Riding • Walking/Hiking Paths • Tennis Court • Golf Nearby • Ideal for Kids • Fishing • Private Pool • Chef/Cook Available • Special Offer • Has Discount • Ideal for Teens • Cots (Cribs) • Heated Pool • Maid Service Included • Beach Nearby • <1hr to Airport • Pool Safety Feature • Heritage Collection • Wi-Fi/Internet • Rural Location • Outdoor Pursuit & Activities • Tourist Towns & Villages • Table Tennis • Games Room • Indoor Games • DVD • Bicycles Provided • Satellite TV • Outdoor Games • Heating • Board games • Swings • Bikes • Badminton • Ideal for Babies & Toddlers • Boules/Petanque • High Chair(s)



Interior & Grounds

14-person rate: Chateau and Cottage, 8 bedrooms, 6 bathrooms

10-person rate: Chateau only, 6 bedrooms, 5 bathrooms

Please note that the maximum capacity permitted includes infants.

Ground Floor

- A large kitchen (50 m²) equipped with two electrical ovens, 3 electric halogens hot plates, an electric plancha, full height refrigerator with freezer compartment, dishwasher and lots of cooking equipment. Sufficient crockery, silverware and glassware for the rental capacity; kitchen table for up to 10 and a bar counter for up to 5.
- A pantry with sink, kitchen table, Nespresso machine & washing machine
- A Boiler room
- A Mud Room with hangers and bench
- A large TV/Playroom (65 m²) with satellite TV, DVD-player, Hi-Fi, bookshelves, Wi-Fi, two Chesterfield sofas, armchairs, games table (some DVDs & English books are available).

First Floor

- A large Louis XIII dining room (50m²) with a maximum capacity of 14/18. Kitchenware is furnished for to cater for the maximum capacity.
- A small dining/breakfast room for up to 8 is equipped with dishwasher, 2 hot plates, sink, microwave, refrigerator, toaster, coffee and Nespresso machine and crockery.
- A large Regency bedroom (30 m²) with a double bed (140x190), shower, toilet and a small hand basin.
- A cloakroom with Wi-Fi printer, umbrellas and cupboard with numerous regional guides.
- A large guest WC with double sinks, cupboard with numerous vases.
- A large blue Louis XV Drawing Room (50 m²) with meridienne, armchairs, game table and Piano forte (not tuned!). A great spot for a gin and tonic pre-dinner!
- A Louis XIII library/drawing room (45 m²) with sofa, armchairs, desk, tapestry, bar, Hi-Fi.

Second Floor

- A large double en-suite bedroom (30 m²) with a double bed (140x200) with bathroom with double sinks, separate shower, Jacuzzi bathtub and WC.
- A single bedroom with a 100 x 190cm bed, bidet and hand basin.
- A double bedroom with a shower and hand basin.
- A laundry room with washing machine, dryer, ironing table.
- A large double en-suite bedroom (35m²) with a 140x200 electrical bed and bathroom with bathtub, separate shower, WC, and en-suite dressing room, mini TV (only local channels).
- A twin bedroom (25 m²), with two single beds 90x200 which may be joined on request.
- A child bedroom/den with a small bed 80x150 (not accounted for in the sleeping capacity). This connects with the twin bedrooms so works well for small children.
- A hall bathroom which connects to the twin room but can also be accessed from the corridor, with sink & bathtub.
- A separate WC.

Cottage (100m from chateau)



Ground Floor

- Kitchen/dining room fully equipped with an oven, fridge, dishwasher, microwave, hot plates
- Living room

First Floor

- Bedroom with double bed (140cm x 200cm, can be split into 2 single beds)
- Bedroom with twin beds (90cm x 190cm)
- Bathroom with bathtub and WC

Outside Grounds

- Heated swimming pool (27-29 degrees) with key operated cover
- Outside shower
- Private tennis court
- Moat for carp fishing (2m deep) and one near pool
- Mountain bikes (basic style)
- Vegetable garden with swings
- Table tennis games room
- Croquet
- Gas barbecue (on request)
- Tennis racquets
- Basic fishing rod (carp are available in the lake)
- Various animals live on the premises - two ponies, a dog, cat and two swans

Location & Local Information

Chateau Les Douves lies in the heart of the wild and beautiful Cotentin Peninsula area in Normandy, in Fontenay-sur-Mer, 300km west of Paris. The closest train station is Valognes (15 km).

You can discover and enjoy the local area by walking or biking through the beautiful and peaceful countryside. There are some bikes available at the chateau (free of charge) so we recommend exploring the local area this way as the roads are so quiet.

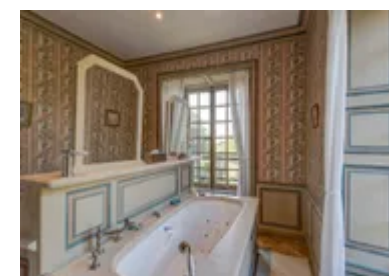
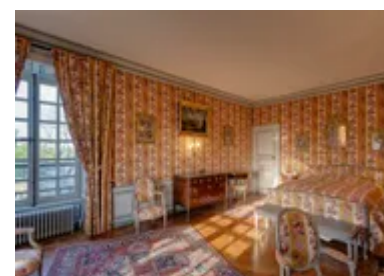
During your stay you should visit the historic town of Valognes, particularly the Hotel de Beaumont and the famous Cider Museum. Here you will find everything you need during your stay (supermarket, shops, restaurants etc) and it is only ten minutes drive away from the chateau.

The chateau is 3 miles from the beach and an 18 hole golf course created 30 years ago by the father of the current owner of the chateau!

There are also several riding clubs around where lessons or private hire can be organised.

Local Amenities

| | |
|---------------------|--|
| Nearest Airport | Cherbourg & Caen (31-94 km) |
| Nearest Ferry Port | Cherbourg (34 km) |
| Nearest Village | Fontenaysur Mer (1 km) |
| Nearest Town/City | Montebourg/Quineville (5km) |
| Nearest Restaurant | Quineville (5 km) |
| Nearest Bar/Pub | Montebourg (5 km) |
| Nearest Beach | Fontenay sur Mer (5 km) |
| Nearest Golf | Fontenay sur Mer (5 km) |
| Nearest Shop | Montebourg/Quineville (5km/5km) |
| Nearest Supermarket | Montebourg/Quineville (5km/5km) |



What we love

- The approach to the chateau via the tree-lined driveway will quite literally take your breath away as you're transported back to the C17th.
- The heated private pool is set within a beautifully kept garden beneath the chateau. It's huge and perfect for relaxing beside whilst the kids play.
- The sheer scale of the place - all the rooms in the chateau are enormous with high ceilings so even large groups will struggle to get on top of each other.
- The table tennis room has been decked out with tennis memorabilia and even has tennis lockers. A nice hang out spot for teenagers.
- Sandy beaches are only 10 minutes drive away and they are perfect for the little ones as you can walk out about 100m and still only be up to your knees!
- Mont St Michel, Bayeux Tapestry and the Normandy landing beaches are all easily accessible for day trips.

What you should know...

- The cottage is charming and comfortable but is not furnished to the same standard as the chateau (see photos)
- You will share the vast estate with two ponies, two swans, a cat and a dog!
- The guardian lives on site but away from the chateau
- There's a moat about 20m from the house which can be used for carp fishing plus a smaller one near the pool
- When the 10-person rate is booked the cottage is not available for guests to access. The cottage is only available to guests when the 14-person rate is selected
- Please note that the maximum capacity permitted includes infants

Terms & Conditions

- **Security deposit:** €3000 paid to the owner by bank transfer or by cheque one month before arrival and refunded two weeks after departure, subject to full inspection.
- **Arrival time:** 4.00 p.m. - 6.00 p.m. only (later check-in on request only and subject to prior arrangement with the owner).
- **Departure time:** 10.00 a.m.
- **Energy costs included?:** Included except central heating (from October to April).
- **Linen & towels included?:** All linen included in the rental price.
- **Pets welcome?:** Not allowed.
- **Other Ts and Cs:** No groups under 25 allowed. No stag/hen parties allowed. Names and ages of customers must be sent to the owner before arrival. The owner requires guests to sign a rental agreement prior to their arrival. When the 10-person rate is booked the cottage is not available for guests to access. The cottage is only available to guests when the 14-person rate is selected. Please note that the maximum capacity permitted includes infants.
- **Changeover day:** Saturday. All other changeover days on request.
- **End of stay cleaning:** Extra €350, payable locally. Guests are required to leave the accommodation clean, tidy and in the same condition as on their arrival. Any extra cleaning, laundry, maintenance and/or rubbish disposal required will be charged against the security deposit.
- **Smoking Allowed?:** No smoking.
- **Insurance:** Guests are required to be in possession of a valid insurance policy, which covers them for cancellations, personal belongings, public liability and any accidental damage caused during their stay.
- **Minimum stay:** 7 nights approximately Mid-May to Mid-September and Christmas, 4 nights during all other periods.
- **Pool heating charge?:** Pool heating is included from Mid May to Mid September. During other months there is an extra cost of 1000€ payable locally and requires 2 weeks notice. Please note that like all heated pools, pool heating and water temperature are reliant on weather and outside temperatures, therefore pool temperature cannot be guaranteed above 25 degrees Celsius.
- **Tax:** French Visitors Tax payable locally (typically costs €1-€10 per adult per night - please enquire if exact amount is required).
- **Pool towels included?:** Yes.