

Pavillon Normandie

Region: Normandy Sleeps: 10

Overview

Experience history at the superb Pavillon Normandie, part of a luxury château in Normandy in the heart of the Cotentin peninsula, just five kilometres from the sea and the charming town of Barfleur, one of France's '*Plus Beaux Villages de France*'.

The home dates back to the 16th century when it was a large stone house with two towers and by the 19th century it had become a small château, lived in by one of France's greatest political thinkers and writers of the time. His wife created the beautiful English gardens which now include fortifications from the Second World War. The famous writer describes the view from the Tower Wing perfectly in one of his works; "A long meadow blending into the sea on the horizon." The couple adored their château and it has remained in the family ever since with a fascinating history. It's is now considered a national landmark and listed amongst France's *Patrimoine National*.

Guests now have the opportunity to stay in the Tower Wing at Pavillon Normandie, over four floors each measuring 100 square metres. The home has been beautifully renovated to feature original charms but with modern amenities such as a lift to all floors, a home cinema room and daily maid service. The five bedrooms all have en-suite bathrooms, and the period-style furnishings and design include an 18th century tapestry, beamed ceilings and four-poster beds in some of the rooms. The 17th century fireplace in the elegant living room is another of the unique features in this fabulous home.

Outside you can relax in six hectares of parkland, a romantic English style garden with broad lawns plus a beautiful pond. The more active guests can enjoy a game of tennis or jog around the vast grounds or you can simply find a shady spot to read your book under the ancient oak



and willow trees.

Despite the tranquil surroundings you are only five kilometres from the charming harbour town of Barfleur with pretty granite houses, characterful cafes and restaurants and some lovely beaches and walks. Follow the coastal path up to the headland for stunning views of the Contentin peninsular from one of Europe's tallest lighthouses.

In this captivating region, there is so much of historical Normandy to discover. Highlights of the area include the pretty hamlets, fine gardens and little ports of La Hague, the breathtaking views from Cap de Carteret (57km) and dining on local oysters in Saint-Vaast-La-Hougue (13km). The Contentin Peninsula played a vital role in the D-Day landings with Utah Beach and Saint- Mère-Eglise a mere 35km away and further historical landing beaches nearby.

The former owner once wrote about his château "I glimpse into a world of dreams...from the top of the tower I can see the port where William the Conqueror embarked for his conquest of England, and do you know that all these places around me bear names that are famous in our history." It is indeed a special place in a region steeped in history as well as a wonderful, tranquil home for a memorable holiday.

Facilities

Romantic • Chateaux & Castles • Eco Friendly (Sustainable) • Walking/Hiking Paths • Tennis Court • Golf Nearby • Ideal for Kids • Horse Riding • Sailing • Tennis Nearby • Historical Sites • Maid Service Included • Ideal for Teens • Chef/Cook Available • All Bedrooms En-Suite • Beach Nearby • <1hr to Airport • Heritage Collection • Wi-Fi/Internet • Rural Location • Outstanding Landscapes • Coffee Machine • Outdoor Pursuit & Activities • Tourist Towns & Villages • TV • Lift • Games Room • Indoor Games • Home Cinema • Working Fireplace/Woodburner • Board games • Babysitting Available • Ideal for Babies & Toddlers • Supports the local community (promotes local businesses) • Committed to Renewable and Green Energy • Promotes Sustainable Living (Recycling) • Promotes Sustainable Living (Vegetable Patch) • Protects and conserves local Heritage • High Chair(s)

Interior & Grounds

The Pavillon

Ground Floor

- Living room with fire-place dating back to 17th century
- Open-plan dining room for up to 12 guests
- Well-equipped modern kitchen
- Library area
- Guest WC
- Lift with access to all three floors

First Floor

- King-size double (or twin) and en-suite bathroom with bath and shower. Features 17th century tapestry, overlooks pond
- King-size double (or twin) and en-suite shower room. Features 19th century *ciel de lit* over the bed

Second Floor

- Twin room (each bed 190cmx130cm) and en-suite shower room. Features a 19th century Napoleon style bed frame, slept in by the original owner of the house
- King-size double with four poster bed and en-suite bathroom with bath and shower. Bedroom suitable for wheelchair access

Third Floor

- King-size double with four poster bed and en-suite art deco style bathroom with bath and shower. Features spectacular beamed ceiling
- Family living room with sofas and armchairs, home cinema and games

Outside Grounds

- Six hectares of parkland
- Al-fresco dining and lounge areas
- Lawns
- Pond
- Mature trees and plants
- Tennis court
- Portable BBQ with coal
- Old joinery featuring small exhibition on owner's life and work

Facilities

- Lift
- Wi-Fi (ground floor only)
- Cable TV
- Home cinema
- Indoor games
- Tennis

Extra Sustainability Gems About the Property



The entire heating system is only based on geothermal energy. The owners have installed a heat pump in the park hidden in the bushes and it produces all the heat necessary for the Tower. Regarding the food supply, the food chain is very short, the ingredients come from local markets or nearby producers (neighbouring fishermen, butchers, farmers etc).

Location & Local Information

Pavillon Normandie is located on the beautiful Contentin peninsula, just north-east of Cherbourg.

You are just five minutes drive from Barfleur, one of Frances '*Plus Beaux Villages de France*', an unspoiled fishing harbour and coastal town with pretty granite houses with white shutters, colourful shops and atmospheric cafes and restaurants. Be sure to try the local speciality, mussels harvested in the sea called *Blonde de Barfleur*.

The village is full of character and history, with houses dating back to the 16th century. Visit the medieval courtyard of Saint-Catherine whilst the more energetic can walk up to the headland where you can enjoy magnificent views of the Contentin peninsula from one of the highest lighthouses in Europe.

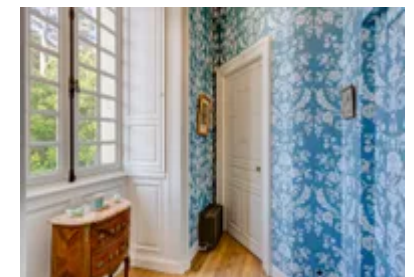
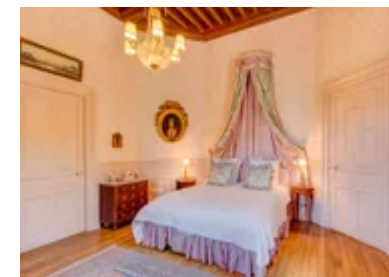
The town has some attractive beaches, the main one, Plage de la Sambière, just to the south. There's a sailing school and diving opportunities and some stunning walks from the village across the nearby dunes. Keen hikers will appreciate the G23 which passes through the village and along the nearby coast. There are also various mountain bike trails to follow, an ideal way to travel through the scenic surroundings.

In this captivating region, there is so much in Normandy to discover. Head to beautiful towns and timeless villages, explore the regions gastronomic delights or head to the coast whether it is dunes and sandy beaches or rugged cliffs. Highlights of the area include the pretty hamlets, fine gardens and little ports of La Hague, the breathtaking views from Cap de Carteret (57km) and the stunning granite island of Mont St Michel (170km).

Be sure to visit one of the fine Calvados cellars and learn how the drink is made and visitors of all ages will enjoy the aquarium museum La Cité de la Mer in Cherbourg (25km). Nature lovers should walk (high tide) or take the amphibious boat (low tide) with wheels across to the amazing Tatihou Island, a UNESCO World Heritage site.

This part of Normandy is full of history. Indeed at Pavillon Normandie you will find a pair of German blockhouses, known as The Atlantic Wall, in the grounds. The Contentin Peninsula played a vital role in the D-Day landings with Utah Beach and Saint- Mère-Eglise a mere 35km away. The town of Carentan, scene of bitter fighting, is just 54km away.

Moving east, Arromanches (102km) and Omaha (84km) are two further examples of beaches with historical importance as well as the batteries and cliffs of Longues-sur-Mer (97km). Combine with a lunch of delicious oysters in Port-en-Bessin (95km) before heading south to Bayeux (90km). The historic town is well known for the UNESCO classified Bayeux Tapestry, depicting the Norman's conquest of England and the medieval cathedral is also worthy of a visit. It is a beautiful town with many renowned restaurants, historical buildings and interesting museums about this fascinating part of Normandy. You will also gladly discover the delicious award-winning oysters of Saint-Vaast-la-Hougue in the nearby village!



Local Amenities

| | |
|---------------------|---|
| Nearest Airport | Cherbourg (14 km) |
| Nearest Bar/Pub | Barfleur (5km) |
| Nearest Beach | La Sambière (6km) |
| Nearest Ferry Port | Cherbourg-Maupertus (24km) |
| Nearest Golf | Golf Of Cherbourg En Cotentin (24km) |
| Nearest Restaurant | Barfleur (5km) |
| Nearest Supermarket | Carrefour, Barfleur (5km) |
| Nearest Tennis | (On site) |
| Nearest Town/City | Cherbourg (25km) |
| Nearest Village | Barfleur/Saint-Pierre-Eglise (5km/7km) |

What we love

- The *Pavillon* has been exquisitely renovated with beautiful features such as a 17th century fireplace, tapestries, paintings and historical furnishings
- The six hectares of beautiful parkland include a pond, ancient willow and oak trees, broad meadows and a tennis court
- In the old joinery there is a small exhibition dedicated to the life and works of the famous 19th Century thinker and writer who used to live there
- Within 5km you are at the charming harbour village of Barfleur, one of France's acclaimed '*Plus Beaux Villages*'
- There are bikes on the estate for the use of our guests
- The charming pond has its own resident swan called Lorenza!

What you should know...

- The *Pavillon* is the spacious Tower Wing of the château, over four floors with five bedrooms, that has been beautifully renovated to rent out to guests
- There is a small lift that can take you to the upper levels or you can climb up the spiral staircase to each floor
- Rufus, a lovely chocolate Labrador, the housekeeper and her family live on the estate in the guardian house

Terms & Conditions

- **Security deposit:** €1500 charged to client's credit card by Oliver's Travels as a pre-authorisation at least 2 weeks prior to arrival and refunded two weeks after departure, subject to full inspection.
- **Arrival time:** 16.00 p.m.
- **Departure time:** 10.00 a.m.
- **Energy costs included?:** Yes.
- **Linen & towels included?:** Yes.
- **Pets welcome?:** No pets allowed.
- **Other Ts and Cs:** The owner requires the client to sign an agreement before arrival.
- **Changeover day:** Saturday. All other changeover days on request.
- **End of stay cleaning available?:** Standard changeover clean included in the price. Guests are required to leave the accommodation clean, tidy and in the same condition as on their arrival. Any extra cleaning, laundry, maintenance and/or rubbish disposal required will be charged against the security deposit.
- **Smoking Allowed?:** Outside only.
- **Insurance:** It is recommended that all guests take out insurance to cover against potential cancellation and any accidental damage caused during your stay at the property.
- **Minimum stay:** 3 nights. All other durations on request.
- **Heating costs included?:** Yes.
- **Tax:** French Visitors Tax payable to Oliver's Travels at the time of balance payment (typically costs €1-€10 per adult per night - please enquire if exact amount is required).