

# Chateau De L'Histoire

**Region:** Midi-Pyrenees   **Sleeps:** 28

---

## Overview

Château De L'Histoire is a 19th-Century jewel which sits majestically on 100 acres of park, farm and woodland. This unique setting, at the end of a one-kilometre driveway, offers a very private setting in the rural Midi-Pyrénées, but is just five minutes from the UNESCO classified ancient village of St. Lizier, one of France's *Plus Beaux Villages*.

The château has been recently renovated and offers light and spacious rooms with an impressive and dramatic blend of old and new. Its rich, historic past greets guests in many original details; high ceilings with intricate wooden details, ornate cornices, tall mosaic windows, impressive fireplaces and a grand staircase to take your breath away. They sit alongside modern bathrooms, artwork and the large swimming pool and sleek wooden decking with a beautiful shaded pergola (built in 2024 summer). Artwork in the château is made up of constantly changing exhibitions by artists who are privileged to showcase their work in such a sumptuous setting.

Despite this idyllic, rural location, both the historic and modern quarters of the village are just a 5-minute drive away, so everything is within easy reach including its highlights, such as its stunning cathedral with cloisters, octagonal tower and 11th-Century frescoes. There is also a renowned restaurant with a panoramic terrace overlooking the village and across to the Pyrénées mountains.

The village is within the Natural Regional park of the Ariège Pyrénées, so outdoor activities such as cycling, kayaking, and horse-riding are in abundance amongst its lakes, mountains and forests. Hiking is a great way to discover this beautiful National Park and in the spring the waterfall at Cascade d'Ars is a highlight. The area is rich with Roman churches to visit and medieval villages to explore, such as La Bastide-de-Serou and Le Mas-d'Azil.

During winter months skiing and snow-boarding are possible just half-an-hour from Château De L'Histoire at the nearby resort of Guzet.

Château De L'Histoire is the perfect retreat and setting for sumptuous and relaxing holidays in this beautifully unique part of southern France.



## Facilities

Maid Service Available • Table Tennis • Indoor Games • Cots (Cribs) • Chateaux & Castles • DVD • Bicycles Provided • Wi-Fi/Internet • Weddings • Has Discount • Has Offer • Special Offer • Outdoor Ceremony • Flexible Catering Options • Heritage Collection • Dry Hire Option • Allow External Caterers • No Corkage • Indoor Reception Available • Pre-Stocked Fridge Available • Transfers Available • Catering Available •

Babysitting Available • Children's videos/DVDs • Children's books •  
Recommended • Private Pool • Bikes • Pool inflatables • Ideal for Kids •  
Baby bath • Ideal for Teens • Washing Machine • Dishwasher • Microwave  
• Coffee Machine • Hairdryer • Satellite TV • Outdoor Games • Table  
Football • Working Fireplace/Woodburner • Heating • Conference  
Facilities • Caretaker/Owner on Site • High Chair(s) • Parking Space •  
Canoeing/Kayaking • Walking/Hiking Paths • Cycling • Horse Riding •  
Outstanding Landscapes • Outdoor Pursuit & Activities • Tourist Towns &  
Villages • Historical Sites

# Interior & Grounds

## Chateau Interior

### Ground Floor

- Main entrance and hall
- Pantry
- Kitchen, well-equipped including oven, hob, microwave, dishwasher, fridge/freezer and coffee machine
- Butlers room
- Side entrance hall
- Dining room
- Winter lounge (stained glass doors leading to terrace)
- Summer lounge (access to terrace)
- TV lounge (can be converted into a bedroom for guests with limited mobility)
- Bathroom with wash basin, walk in shower
- Guest WC

### First Floor (accessed via main spiral staircase)

- Bedroom 1 (Master bedroom) with king size bed, en suite bathroom with bath and walk in shower, large wardrobe, balcony and sun loungers
- Bedroom 2 with king size bed, small en-suite bathroom with bath and shower, walk in wardrobe (can be converted into a family room)
- Bedroom 3 with king size bed, very large wardrobe, en-suite bathroom with walk in shower and underfloor heating
- Bedroom 4 with king size bed, very large wardrobe, en-suite bathroom with walk in shower and underfloor heating
- Bedroom 5 with double bed, en-suite bathroom with walk in shower and underfloor heating, drawers and hanging space
- Bedroom 6 with king size bed, en-suite wet room in the tower. (can be converted into a very spacious family room)

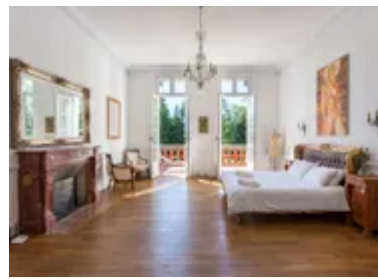
### Second Floor (accessed via second spiral staircase from ground floor)

- Bedroom 7 with double bed, en-suite bathroom with walk in shower and underfloor heating, drawers and hanging space
- Bedroom 8 with double bed, en-suite bathroom with walk in shower and underfloor heating, drawers and hanging space
- Bedroom 9 with double bed, en-suite bathroom with walk in shower and underfloor heating, drawers and wardrobe
- Bedroom 10 with double bed, en-suite bathroom with walk in shower and underfloor heating, drawers and wardrobe
- Bedroom 11 with king size bed, en-suite bathroom with walk in shower, large wardrobe (can be converted into a family room)
- Bedroom 12 with king size bed, small en-suite bathroom with bath and shower, walk in wardrobe (can be converted into a family room)

*Basement closed to guests.*

## Self-contained Attic Apartment

- Kitchen
- Bedroom 13 with double bed
- Bedroom 14 with double bed and hanging rail



- Bathroom with walk in shower and underfloor heating
- Open plan living area with with 2 very comfortable sofa beds

*The apartment is completely self-contained and offers independence from other chateau guests if required.*

### **Outside Grounds**

- Terrace
- Private swimming pool (size: 16mx8m/depth: 1.5m-1.7m/shape: rectangular) with sensor system, open approximately May to October - *parental supervision is recommended at all times.*
- Wooden decking area with shaded pergola
- 100 acres of park, farm and woodland
- Outdoor dining area
- Barbecue
- Parking space

### **Additional Facilities**

- Underfloor heating in all bathrooms
- 2 working fireplaces (ground floor)
- 2 decorative fireplaces
- Fans available on request
- Satellite TV (75")
- I-pod docking station
- Pilates studio
- Iron and ironing boards



# Location & Local Information

Château De L'Histoire is set in 100 acres of parkland, farm and woodland in the Ariège department of southern France in the Ariège Pyrénées. The château is just a 5-minute drive (or 30-minute uphill walk) to Saint-Lizier, one of France's official '*Plus Beaux Villages*' with monuments listed as UNESCO World Heritage sites.

By the banks of the Salat, Saint-Lizier is such a wonderful village to discover with its historic charm and rich heritage. Explore its narrow flower-filled lanes with medieval houses, little craft shops and a shady café terrace on the main square. The 17th century Palais des Evêques is a great highlight of the village, as is Cathédrale Saint-Lizier with its incredible frescoes. On the outskirts of the village you will find the modern area with supermarkets for food shopping as well as a local restaurant.

There are further amenities in the small riverside town of Saint-Girons (4.5km) including several restaurants, shops, a much-loved micro-brewery and an atmospheric Saturday morning market by the banks of the river selling lots of local products and crafts. In the other direction along the river is the spa town of Salies-du-Salat (23km) with thermal baths dating back to the 19th century.

Set within the Natural Regional Park of the Ariège Pyrénées, outdoor activities such as walking, cycling, kayaking (including private lessons) and horse-riding are in abundance amongst its lakes, mountains and forests. Hiking is a great way to discover this spectacular National Park and in the spring the waterfall at Cascade d'Ars (40km) is a highlight. You can even take amazing discovery flights, private lessons and taster gliding sessions at the aerodrome centre just a couple of minutes away (adjacent to the property). Winter skiing is possible just half-an-hour away at the nearby resort of Guzet.

Heading south, Lac de Bethmale (28km) is especially magnificent with its emerald coloured water and glorious scenery each season, loved by keen walkers, fishing enthusiasts and nature lovers. The lake is an ideal spot for waterside picnics in spectacular surroundings.

Foix (46km) is another brilliant day out, a small and beautiful medieval city with a rich heritage at the crossroads of the Arget and Ariège rivers. The views from the top of the towers at Château de Foix are stunning and there is a lovely medieval garden with plants and herbs that were widely used in medieval times. The heart of the old town is a joy to explore and there is a fantastic market on a Friday morning.

Meanwhile, come across Roman churches and idyllic villages to explore including La Bastide-de-Sérou (29km) and Le Mas-d'Azil (27km).



## Local Amenities

Nearest Airport	Toulouse-Blagnac Airport (103km)
Nearest Airport 2	Carcassonne Airport (119km)

Nearest Village	<b>Saint-Lizier (2.5km)</b>
Nearest Restaurant	<b>Just outside Saint-Lizier/Saint-Girons (2km/4.5km)</b>
Nearest Supermarket	<b>Aldi, Saint-Lizier (1.5km)</b>
Nearest Town	<b>Saint-Girons (4.5km)</b>
Nearest Piste	<b>Guzet (44km)</b>
Nearest Golf	<b>Golf Club de L'Ariège (34km)</b>

## What we love

- The beauty of the château lies not only in the care taken with its refurbishment but also with the seclusion offered to its guests
- The legacy of a past arboriculturalist of the château means that there are still impressive rare species of trees on the grounds
- Outdoor activities and things to see are endless, alternatively guests can simply relax by the pool or in the peace and tranquillity of the extensive gardens within the estate
- The self-contained attic apartment is modern and ideal for guests requiring their own space
- Guests will enjoy absolute privacy, without being cut off from the outside world, just 2.5km from the historic heart of Saint-Lizier, one of France's '*Plus Beaux Villages*'
- There's a wonderful Saturday morning market and a much-loved micro-brewery in nearby Saint-Girons
- During winter months skiing and snow-boarding are possible just half-an-hour away at the nearby resort of Guzet

## What you should know...

- The ancient part of the local village is a 30-minute walk (uphill), while its modern quarter (with supermarkets etc) is a 20-minute walk away.
- The on site management team live discretely in the coach house on the estate.
- One of the downstairs sitting rooms can be converted to a bedroom for guests who require a ground floor bedroom (there is also a ground floor shower room).
- The airfield adjacent to the property offers gliding and flying lessons too - make sure you book ahead.

# Terms & Conditions

- **Security deposit:** £2,000 paid via bank transfer to the owner one month before arrival and refunded two weeks after departure, subject to full inspection.
- **Arrival time:** 3.00 p.m.
- **Departure time:** 12.00 p.m.
- **Energy costs included?:** Yes.
- **Linen & towels included?:** Yes, including pool towels.
- **Pets welcome?:** No.
- **Other Ts and Cs:** Weddings, stag/hen parties and any special events are on request only and subject to prior arrangement with the owner and additional charges.
- **Changeover day:** Saturday.
- **End of stay cleaning available?:** Yes. However, guests are required to leave the accommodation clean, tidy and in the same condition as on their arrival. Any extra cleaning, laundry, maintenance and/or rubbish disposal required will be charged against the security deposit.
- **Smoking Allowed?:** In designated areas only.
- **Minimum stay:** 2 nights.
- **Heating costs included?:** No, charges apply from November to March, payable locally based on consumption.
- **Pool opening dates?:** The pool is open approximately May to October. Please note that pool opening dates are subject to local weather conditions and pool maintenance requirements and that cooler months may not be suitable for swimming.