

# Sur La Colline

**Region:** Dordogne   **Sleeps:** 10

---

## Overview

Sur La Colline has been truly blessed by an enviable position on a hill in the Périgord Noir forest, overlooking the Dordogne River with views as beautiful as a landscape masterpiece painting.

Although this is a natural countryside setting, guests can stroll to a hamlet in only 20 minutes, where there are three restaurant-bars and a bakery, and in addition to admiring the river from the terrace, a short 15-minute walk will take you down to its edge, for swimming and fun watersports. Nearby is the Cingle de Montfort, a place of stunning natural beauty and breathtaking views, and Sarlat, the ancient gem of the Périgord Noir is only a 15-minute drive away.

This attractive and spacious family villa is a lovingly restored old French chartreuse, with its typical long stone walls and pretty windows – a chocolate-box farmhouse in the middle of seven acres of private woodland. Indoors, comfortable and homely rooms are bathed with light and magnificent views from the outdoors. Lovely touches have been included with families in mind, such as a small nursery room, a separate library-study and two fridge-freezers. Outdoors the terraces and private swimming pool are like grand stages from where to admire the mesmerizing landscape all around.

Guests are spoiled for choice as far as attractions go with so much on offer at a short distance. A village with good amenities and a Sunday market is only a 10-minute drive away. Besides the river activities there is also hiking and cycling, and a host of interesting things to see and do such as caves, troglodyte villages, gardens and castles. Not to mention pretty market villages, vineyards, restaurants and some of France's finest food and wine.



Sur La Colline is an enchanting home in a breathtaking setting in the heart of the Périgord Noir where castles, caves, market towns, vineyards and restaurants offer endless delights for the young and old.

## Facilities

Cycling • Historical Sites • Wi-Fi/Internet • Golf Nearby • Fishing • Canoeing/Kayaking • Watersports • Horse Riding • Walking/Hiking Paths • Romantic • Cots (Cribs) • Table Tennis • Rural Location • Maid Service Available • Private Pool • Chef/Cook Available • Board games • Children's books • Pool Safety Feature • Heated Pool • Ideal for Kids • Ideal for Teens • Satellite TV • Working Fireplace/Woodburner • Heating • High Chair(s) • Tourist Towns & Villages

# Interior & Grounds

## Villa Interior

### Ground Floor

- Living room with sofas and armchairs, wood-burning stove and French doors opening on to the terrace
- Study/library with door leading to the terrace
- Open-plan kitchen-diner, well equipped including dishwasher, gas hob, electric oven, microwave, two fridge-freezers, toaster, coffee machine and liquidiser. Dining area with table and chairs for up to ten guests with doors leading to the terrace
- Master double bedroom with door leading to a terrace. En-suite bathroom including roll-top bath and WC.
- Adjoining shower room
- Separate WC
- Laundry room

### Basement

- TV room with Satellite TV (UK channels)
- Doors leading to garage with table tennis, additional pool furniture and BBQ

### Landing

- Small double with en-suite bathroom and WC
- Nursery with cot and wash basin
- Doors leading to West Wing corridor and East Wing corridor

### West Wing

- Double bedroom with en-suite bathroom with WC
- Double bedroom with en-suite bath/shower room with WC

### East Wing

- Double bedroom with wash basin
- Triple bedroom with king bed (160x200), queen bed (140x190) and a single bed, with wash basin
- Shared bathroom with shower, sink and WC

## Outside Grounds

- Private heated swimming pool (size: 10mx5m) with electric cover and
- Fenced poolside decking with sun-lounges and shaded pergola
- Spacious front terrace with al-fresco table and chairs, under shade of oak tree, overlooking pool and countryside
- Private woodland (7 acres)
- Private parking

## Facilities

- Heating (oil heating)
- Fans
- Wi-Fi



- Satellite TV (UK channels)
- Washing machine
- Iron
- Hairdryers
- Board games
- Children's toys and books
- Table-tennis
- Buggy



## Location & Local Information

At Sur de Colline you are surrounded by glorious countryside views yet you can walk down to a little hamlet in twenty minutes where you will find two restaurants, a bar and a bakery. You can also wander down to the beautiful Dordogne in about fifteen minutes where you can find spots for swimming.

Just a little further by car is the local village (3km) which has a supermarket, butchers, pizza restaurant and Sunday summer market.

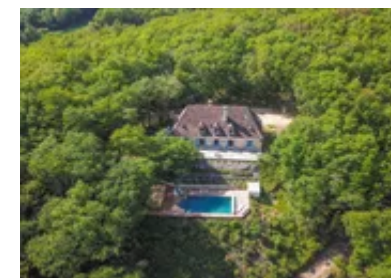
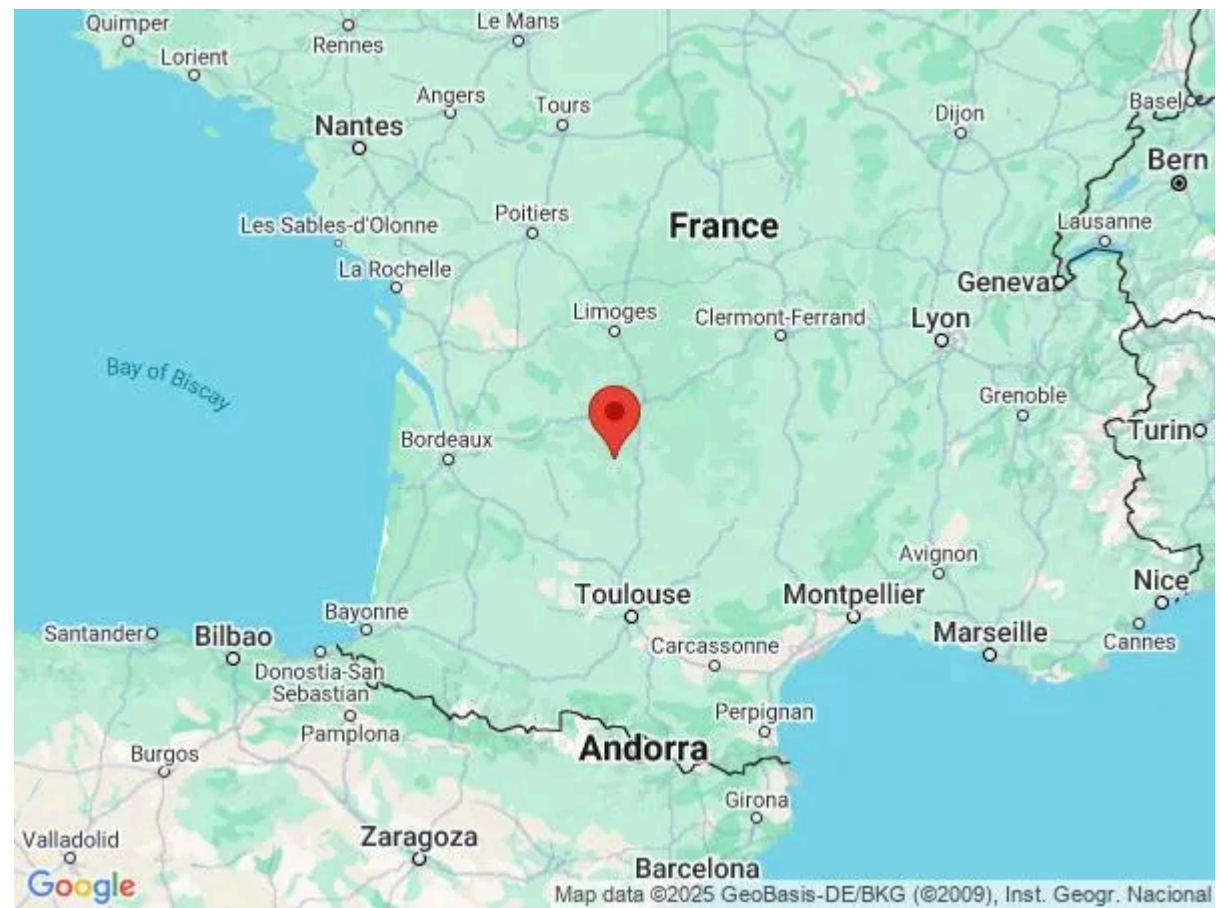
As well as canoeing along the Dordogne, there are many other brilliant activities in the area including hikes for all abilities, cycling routes, horse-riding and golf within half an hour. Another way to see the stunning countryside is by taking a hot air balloon and viewing the remarkable Dordogne from above.

Nearby La Foret des Ecureuils Adventure Park (5km) has tree-top activities and paintballing, kids will also love the Dinosaur Park (40km) or the Aquarium du Perigord Noir (38km) whilst the more adventurous can try go-karting just south of Périgueux (60km).

The nearby town of Sarlat (8km) is one of the most beautiful towns in the region with a maze of medieval narrow streets to explore, lovely squares and a fascinating cathedral. The town can get busy during the summer months but you can usually avoid the crowds by heading there early and enjoying the morning light.

There is host of other interesting things to see and do in this part of the Dordogne, for example the Lascaux caves, just outside Montignac (34km), stunning castles across the region such as those in Castelnaud-la-Chapelle (16km) and Beynac-et-Cazenac (15km), pretty villages along the river including Domme (8km) and La Roque-Gageac (10km) plus stunning gardens such as those at Marqueyssac near Vézac (14km).

## Local Amenities



Nearest Airport	Brive-Souillac/Bergerac/Limoges (44km/77km/160km)
Nearest Restaurant	(20 mins walk)
Nearest Shop	Bakery (20 mins walk)
Nearest Village	(3km/10mins drive)
Nearest Town/City	Sarlat (8km/15mins)
Nearest Supermarket	(15 mins drive)
Nearest Golf	30km

## What we love

- Did we mention the beautiful views...?
- Walk to the local restaurant-bars and bakery for morning coffee and croissants
- A village is just a 10-minute drive away and magnificent Sarlat only 15 minutes
- The area is a place of natural beauty with lots of good outdoor activities as well lots to see
- Plenty of river activities a stone's throw away

## What you should know...

- One of the bedrooms is a small double room

# Terms & Conditions

- **Security deposit:** €1000 charged to client's credit card as a pre-authorisation at least 2 weeks prior to arrival and refunded two weeks after departure, subject to full inspection.
- **Arrival time:** 4.00 p.m.
- **Departure time:** 10.00 a.m.
- **Energy costs included?:** Yes.
- **Linen & towels included?:** Yes, including pool towels.
- **Pets welcome?:** On request only and with prior agreement with the owner. If accepted, a pet supplement per pet per day will apply.
- **Other Ts and Cs:** Weddings, stag/hen parties and other celebrations are not allowed.
- **Changeover day:** Saturday. All other changeover days on request.
- **End of stay cleaning available?:** Yes. Mid-stay clean and linen change is included for stays of 2 weeks or more. However, guests are required to leave the accommodation clean, tidy and in the same condition as on their arrival. Any extra cleaning, laundry, maintenance and/or rubbish disposal required will be charged against the security deposit.
- **Smoking Allowed?:** No.
- **Heating costs included?:** Yes.
- **Pool heating charge?:** No Please note that like all heated pools, pool heating and water temperature are reliant on weather and outside temperatures
- **Pool opening dates?:** The pool is open from early May. Please note that pool opening dates are subject to local weather conditions and pool maintenance requirements and that cooler months may not be suitable for swimming.