

River Severn Mansion

Region: The South West **Sleeps:** 26

Overview

This stunning riverside property offers the perfect group retreat. River Severn Mansion offers the ideal space for hen and stag parties, birthday parties, family celebrations and friend's get-togethers! Boasting beautifully furnished rooms and breath-taking views, along with an indoor, heated swimming pool and a games room, there is something for everyone to enjoy! Set in half an acre of land, the property benefits from views across the River Severn, such that you can enjoy views of the surfers riding the Severn Bore and the calming sounds of water.

The River Severn Mansion is approached via a gravelled driveway, with electric gates and security, there is ample off-road parking for the whole group. On approach, the house offers a quintessential charm and elegance and as you step through the front door the warm atmosphere of the property continues to be evident. You can choose to cook for yourselves or be catered for whilst putting your feet up, remembering what quality time with your friends and family is all about! The house provides abundant space for everyone to spend time together as well as to finding moments of peace and quiet to yourself. Throughout the property there are four reception rooms, including a sitting room, a spacious dining room, a kitchen/breakfast room, six bath/shower rooms, two cloakrooms and eight bedrooms. You will also find a separate lodge house, with a games room with table tennis, a pool table and table football, so the championships can begin from the moment you arrive! Downstairs there is a cinema room and space for two more guests to sleep.

The luxurious heated indoor swimming pool has French doors opening to the garden with access to the River Severn. The garden itself provides a tranquil setting for the whole group, with outdoor seating, sun loungers and a lawned area, all in view of the glistening waters of the river. River Severn Mansion is the perfect setting for a magical holiday, a place to spend time with the people you love, eat delicious food and give yourself a bit of well-deserved pampering.



Facilities

Golf Nearby • Fishing • Ideal for Kids • Stag/Hen Allowed • Private Pool • Ideal for Parties • Manor • Pets on Request • Ideal for Teens • Heated Pool • Cots (Cribs) • Indoor Pool • Ground Floor Bed & Bath • Modern • Parking Space • Pool Safety Feature • Walk to Restaurant • Heritage Collection • Wi-Fi/Internet • Waterfront • BBQ • Coffee Machine • Outstanding Landscapes • Outdoor Pursuit & Activities • Tourist Towns & Villages • Games Room • Indoor Games • DVD • Hot Tub • Dishwasher • Microwave • Satellite TV • Outdoor Games • Home Cinema • Working



Interior & Grounds

Ground Floor

- Reception hall
- Kitchen and breakfast room (2 x dishwashers)
- Cosy snug
- Living room with wood burning stove
- Formal dining room (seating up to 30 guests)
- Bedroom with double bed, double sofa bed, en-suite shower room and access to Jack & Jill style WC.
- Cloakroom/WC x2
- Indoor heated swimming pool (*available for an additional charge, please see the T&Cs tab*)

First Floor Left Side

- Bedroom with super-king sized Zip & Link bed and additional single bed
- Bedroom with double bed
- Family bathroom with shower and WC

Second Floor

- Master bedroom with super-king bed, Juliette balcony and en-suite bathroom
- Bedroom with super-king sized Zip & Link bed (can be twin beds)

West Wing

- Bedroom with double bed
- Bedroom with king-sized Zip & Link bed (can be twin beds)
- Family bathroom with shower and WC
- Big Brother-style dorm with 11 single beds and en-suite shower room

Lodge house

- Games room with air hockey, pool table, football table, dart board and sofa bed
- Cinema Room with 75-inch TV and PlayStation 4 and 2 double sofa beds
- Bathroom with shower and WC

Exterior Grounds

- Hot tub (*available for an additional charge, please see the T&Cs tab*)
- Outdoor dining area seating 16
- Sun loungers
- Outdoor sofa area
- Gas barbecue
- Fire pit
- Trampoline
- Table tennis
- Marquee hire is available at an extra charge
- Parking for 20 cars

**River Severn Mansion can sleep up to 30 people (including at least 2 children) if all beds and sofa beds are in use. Please enquire for more details and pricing information.*



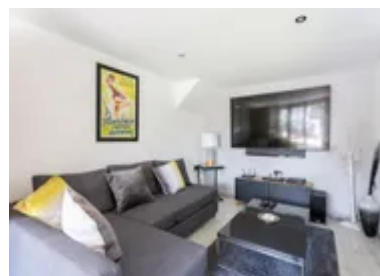
Location & Local Information

The River Severn Mansion is located about 5 miles from Gloucester. Set in half an acre of land, the property benefits from beautiful views across the River Severn. The house is approached via a gravelled driveway, with electric gates and security, there is ample off-road parking for the whole group, with space for up to 20 cars. The rustic Red Lion pub is located nearby, should you wish to pop out for a pint during your stay. Also in the nearby area you will find, Cheltenham Racecourse, Chepstow Racecourse, Gloucester Rugby Club and fantastic places for outdoor activities such as climbing, mountain biking, kayaking and paintballing! For children visiting, there is also Go Ape nearby, the Cotswolds water park and Birdland, so there is plenty to keep you busy and entertained should you decided to leave the River Severn Mansion. The nearest train station is Gloucester and Bristol and Birmingham airports are only about an hour's drive from the property.

The property itself offers a tranquil and peaceful setting, where the highest levels of noise come from the river waters! With a picturesque garden and river views there is really no need to leave the property at all! Guests can fish from the river bank; however, you will need a rod licence which is easy to obtain from the post office. The house is excellently located for watching the famous Severn Bore, so make sure you check the tide times during your stay. This fabulous location offers something for the whole group, an ideal retreat for friends and loved ones.

Local Amenities

Nearest Airport	Bristol Airport (80 km)
Nearest Golf	Gloucester Golf Club (16 km)
Nearest Restaurant	Severn Bore Inn (Walking Distance)
Nearest Supermarket	Tesco Superstore (10 km)



Nearest Town/City	Gloucester (11 km)
Nearest Train Station	Gloucester Train Station (11.2 km)

What we love

- Stunning riverside property, perfect for parties and celebrations!
- Grandstand view of the surfers riding the Severn Bore!
- Indoor heated swimming pool perfect for kids and adults alike.
- Peaceful location, ideal for an escape from the hustle and bustle.

What you should know...

- The nearest airports are Bristol and Birmingham, both about an hour's drive from the property.
- One of the bedrooms can sleep up to 10 adults in single beds.
- Marquee hire is available at an extra charge.
- Bespoke weddings with ceremony can be arranged.

Terms & Conditions

- **Security deposit:** £1,500 (£2,000 for stag & hen do's) to be paid prior to arrival and to be refunded in full subject to a damage inspection on departure.
- **Arrival time:** 3.00 p.m.
- **Departure time:** 10.00 a.m.
- **Energy costs included?:** Yes.
- **Linen & towels included?:** Yes.
- **Pets welcome?:** On request only and with prior agreement with the owner. If accepted, a pet supplement of £15 per pet per night will apply (payable locally).
- **Other Ts and Cs:** If you wish to put a marquee or tent up in the gardens of River Severn Mansion, this will be subject to prior approval from the property owner, and a fee of £300.
- **Changeover day:** Friday. All other changeover days on request.
- **Smoking Allowed?:** No
- **Other 2:** If you or your guests wish to park at River Severn Mansion, please use the designated parking area provided. Please note: there are no electric vehicle charging points on site, and charging from the household supply is not permitted under any circumstances.
- **Minimum stay:** 4 nights during Christmas and New Year. 2 nights during all other periods.
- **Heating costs included?:** Yes.
- **Pool heating charge?:** There is an additional charge for pool and hot tub heating and maintenance. If you wish to use these facilities, this fee must be paid directly to the property owner two weeks before your arrival. £400 per weekend or £600 for a week long stay.
- **Internet access?:** Yes.