

Chateau Gaillac

Region: Midi-Pyrenees **Sleeps:** 20

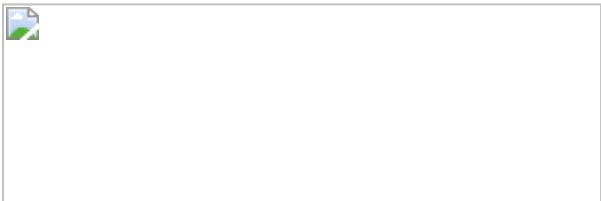
Overview

Château Gaillac is a late Napoleonic, belle époque style extravaganza of opulence, situated in the valley of the Tarn River between the historic cathedral cities of Albi and Toulouse, with easy access to the Autoroute.

The Vignerons of Gaillac have tended the fertile fields in the Tarn valley for the past millennium with loving care in a landscape of viridian, terracotta and ochre reminiscent of Tuscany. Once the centre of this vast wine making domain, Château Gaillac enjoys views over neighbouring vineyards, of which guests receive a complimentary case upon arrival.

Resplendent in its park-land arboretum setting of lofty cedars, the château sits just back from the banks of the river Tarn, and also enjoys access to the adjoining rolling countryside. All the while, the facilities and popular attractions of the historic market town of Gaillac are just four minutes away.

Bright, warm and charmingly decorated in traditional Lime-wash, Château Gaillac is an enchanting home away from home in one of France's oldest wine growing regions.



(<https://www.mailplus.co.uk/edition/travel/european-breaks/284128/pink-garlic-fizzy-reds-and-a-luxury-chateau-await-in-this-hidden-corner-of-france>)



Facilities

Chateaux & Castles • Tennis Nearby • Ground Floor Bed & Bath • Wi-Fi/Internet • Historical Sites • Golf Nearby • Air-Con • Fishing • Recommended • Wine Tasting • Horse Riding • Exclusive • Walking/Hiking Paths • Cots (Cribs) • Chef/Cook Available • Indoor Games • Rural Location • Table Tennis • Great Value • Maid Service Available • DVD • Bicycles Provided • Private Pool • Heritage Collection • Babysitting Available • Pool Safety Feature • Bikes • Ideal for Babies & Toddlers • Ideal for Kids • Pool inflatables • Ideal for Teens • Pets on Request • Satellite TV • Working Fireplace/Woodburner • Heating • High Chair(s) • Outstanding Landscapes • Outdoor Pursuit & Activities • Tourist Towns & Villages

Interior & Grounds

Château Interiors (600m2)

- 2 entrance halls
- Large salon / TV room
- Dining room
- Manoir-style kitchen, well-equipped including large gas range, two microwaves, two coffee machines, large fridge and two dishwashers. Double doors lead to dining room or out to terrace overlooking swimming pool
- 2 x separate WCs

Ground Floor Bedrooms (some steps)

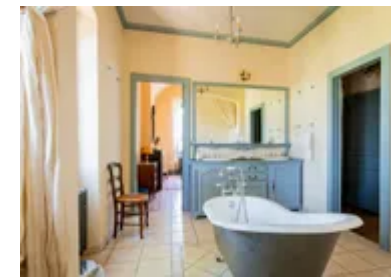
- Bedroom with double bed (140x190cm) and en suite shower room with WC
- Bedroom with double bed (140x190cm), single bed (90x190cm). Bathroom and separate WC
- Bedroom with double bed (140x190cm), single bed (90x190cm) and doors leading to terrace
- Small bedroom with small single bed (70x190cm)

First Floor Bedrooms

- Large landing
- Bedroom with double bed (140x190cm) and single bed (90x190cm). En suite bathroom with WC
- Bedroom with two small double beds (130x190cm each)
- Bedroom with double bed (150x190cm) and single bed (90x190cm)
- Bedroom with two single beds (109x185cm and 80x200cm) and en suite shower room with WC
- 2 x bedrooms with double bed (160x200cm)
- 2 x shared bathrooms with WC
- Additional small bathroom with WC (in corridor)

Outside Grounds

- Swimming pool (11x5m, depth: 1.5m) with safety gate and pool toys
- Poolside sun-loungers



- Al-fresco dining terrace (overlooking pool)
- Barbecue area and herb garden
- Portico terrace at front of house
- Upper first floor terrace
- Parkland
- Tree look-out (with ladder)
- Bikes and children's bikes

Facilities

- Heating
- Air-conditioning (3 bedrooms only)
- TV and DVD player
- Bikes
- Washing machine and dryer

Location & Local Information

Château Gaillac rests on the edge of a hamlet, around 4km away from the small town of Gaillac and between the historic cathedral cities of Albi (28km) and Toulouse (60km) with easy access to the Autoroute. There is also a train station in Gaillac with a good railway services.

The surrounding region of Gaillac is both scenic and vibrant. Whether you're wine tasting around the local vineyards, either exploring the hill top citadels of Cordes-sur-ciel and Bastides des Albigois or visiting one of the 5 "*Plus Beaux Villages de France*" like Castelnau de Montmirail, Puycelsi, Bruniquel, Lautrec, Monesties all located less than half an hour away, there's plenty to see and do.

The actual town of Gaillac is but a short cycle away. Once there you'll find a mix of beautiful architecture from many periods, and a real old world charm. Make sure to drop by the Musee des Beaux-Arts, and leave plenty of time to soak up the atmosphere of the adjoining French gardens and park.

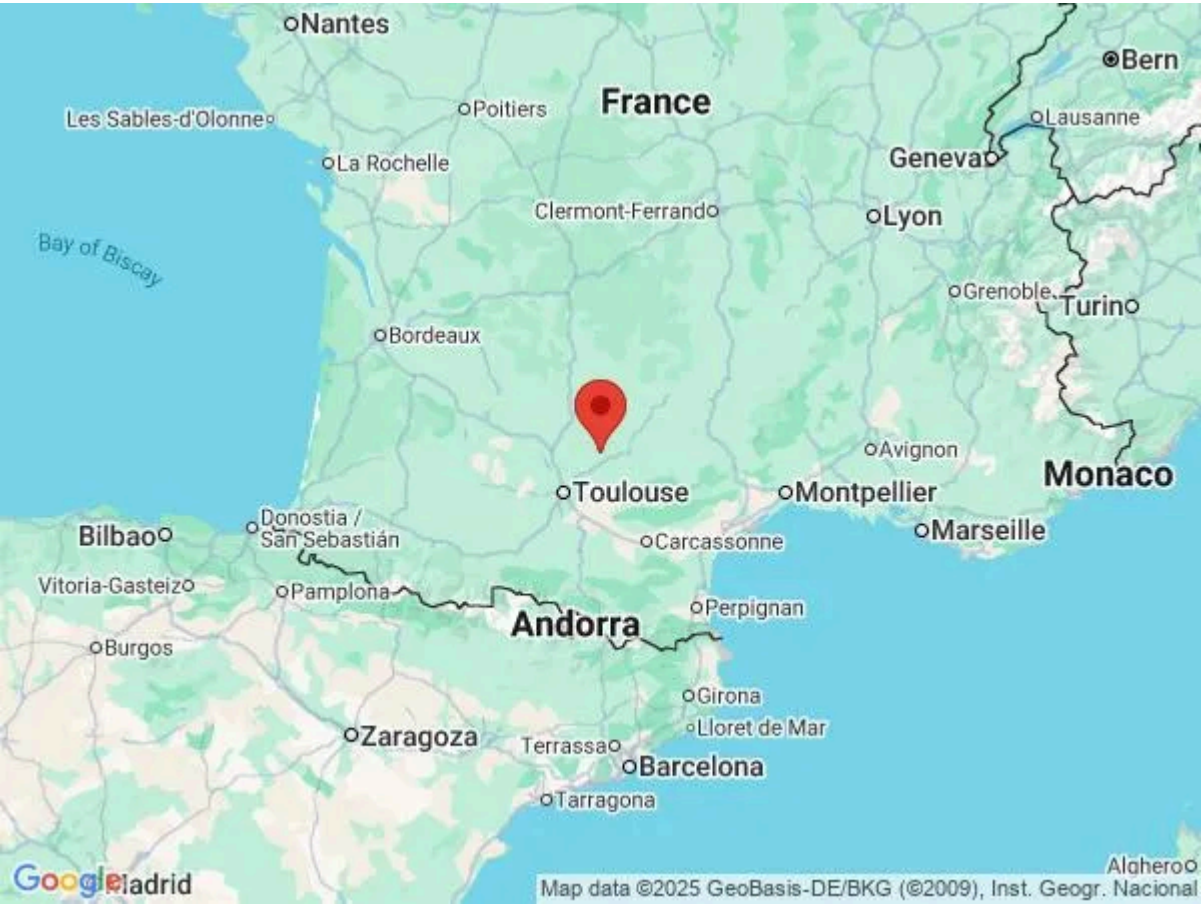
Gaillac is abundant in heritage within its winding streets and tree lined esplanades, but also benefits from a modern shopping centre, open-market and restaurants to suit all tastes. There are several markets, the Friday market is the biggest.

The UNESCO world heritage city of Albi lies just 20 minutes from the château and boasts Europe's largest brick building; the magnificent Cathedral of Albi – a masterpiece of Southern Gothic architecture, and a must see in the region. The Toulouse-Lautrec museum recently refurbished is well worth a visit. Children may also like to pay a visit to the water park "Atlantis" located half an hour away.

Out in the peaceful surroundings of Château Gaillac it is easy to forget that you're only an hour from Toulouse, a bustling twin university city. Fourth French city by its size, Toulouse is a hub of technology within Southern France. It even has its own space visitor centre, and yet it still maintains a simplicity and romanticism that is true to the region. Bisected by the River Garonne, it is often referred to as *La Ville Rose* (the Pink City) due to the attractive pink terracotta bricks that make up many of the historic structures in the city.

Local Amenities

Nearest Airport	Toulouse (66km)
Nearest Train Station	Gare de Gaillac (4.5km)
Nearest Town	Gaillac (4km)
Nearest City	Albi/Toulouse (27km/60km)



Nearest Golf	Golf d'Albi (28km)
--------------	-----------------------

What we love

- The rural surroundings mean wildlife share the grounds of Château Gaillac. At dawn, wild roe deer can be seen drinking from the fountain and by evening owls and nightingales serenade al-fresco diners.
- In winter the château benefits from full central heating with cast-iron radiators, open-fires in all principle rooms and an abundance of pungent seasoned oak and cedar logs in the cellar.
- By night principle rooms are lit by sparkling chandeliers that complement the fine architectural detail, and conjure an atmosphere of grandeur appropriate to the château's glorious past.
- Guests benefit from a case of regional wine.
- The kitchen and dining terrace overlook the pool area

What you should know...

- During the grape harvest in September, guests may notice the distant hum of tractors behind the natural tranquillity that characterises Château Gaillac.
- This is a region of natural beauty, and historical and cultural prestige, so a wild night life will be hard to come by.
- Air-conditioning is only available in three bedrooms.
- The single bedroom on the ground floor is only suitable for a small person.
- There are a few steps to access the ground level.
- A helpful caretaker lives close by.

Terms & Conditions

- **Security deposit:** €500 charged to client's credit card by the owner one month before arrival and refunded two weeks after departure, subject to full inspection.
- **Arrival time:** 5.00 p.m.
- **Departure time:** 10.00 a.m.
- **Energy costs included?:** Yes.
- **Linen & towels included?:** Yes (extra sheets available on request).
- **Pets welcome?:** On request only and with prior agreement with the owner.
- **Other Ts and Cs:** A/C is only available in three bedrooms. Weddings, stag/hen parties and any special events are not allowed.
- **Changeover day:** Saturday. All other changeover days on request.
- **End of stay cleaning available?:** Yes. However, guests are required to leave the accommodation clean, tidy and in the same condition as on their arrival. Any extra cleaning, laundry, maintenance and/or rubbish disposal required will be charged against the security deposit.
- **Smoking Allowed?:** Outside only.
- **Insurance:** Guests are required to be in possession of a valid insurance policy, which covers them for cancellations, loss of personal belongings, personal liability and any accidental damage caused during their stay.
- **Minimum stay:** 7 nights. All other durations on request.
- **Heating costs included?:** Yes.
- **Pool towels included?:** Yes.
- **Pool opening dates?:** Please note that pool opening dates are subject to local weather conditions and pool maintenance requirements and that cooler months may not be suitable for swimming.