

Villa Fryda

Region: Aroeira Sleeps: 10

Overview

Set amidst the lakes and pine trees of the stunning Aroeira golf resort, the delightful Villa Fryda enjoys excellent facilities and is just 2km from the beach at Praia Fonte da Telha. With two championship courses on site, the resort lies just 25km from Lisbon, and runs alongside a 30km stretch of beautiful beaches.

The villa sits in its own private gardens, with plenty of space to make the most of the sun, or for children to play. A 12m x 5m swimming pool with spacious terrace has sun loungers and garden furniture, and a covered dining area and barbecue close to the pool area take care of entertaining friends. The villa also offers parking for two cars, and the use of bicycles for getting around the area.

Inside, a living and dining room looks out on the pool and terrace, offering a comfortable seating area with fireplace and television. The kitchen is equipped with all the facilities you may need, including a dishwasher, microwave and coffee machine. On the same level are three of the double bedrooms, one of them en-suite, and a separate bathroom.

On the lower level, you have a further three twin bedrooms and two more bathrooms. The bedrooms on the upper level also benefit from air conditioning.

Perfectly situated for both city and coast, the Aroeira resort offers much more than golf, and it's all on your doorstep at Villa Fryda. You can look forward to a spa and wellness centre, tropical swimming pool, four tennis courts and a host of bars and restaurants.

Within around 2km you have beachfront bars and excellent fish restaurants, and clubs and live music bars just a little further away. The beaches along the coast



range from popular to near-deserted, so take the time to find your favourite.

Facilities

Golf Villa • Wi-Fi/Internet • Air-Con • Beach Nearby • Villa • Laptop
Friendly Workspace • Bicycles Provided • Great Value • DVD • Cots
(Cribs) • Private Pool • Heated Pool • Bikes • Ideal for Babies & Toddlers •
Ideal for Kids • Ideal for Teens • Walk to Restaurant • <1hr to Airport •
Washing Machine • Dishwasher • Microwave • Coffee Machine • Ground
Floor Bed & Bath • Satellite TV • TV • Working Fireplace/Woodburner •
Heating • High Chair(s) • Parking Space • Walking/Hiking Paths • Wine
Tasting • Cycling • Outstanding Landscapes • Outdoor Pursuit & Activities
• Tourist Towns & Villages

Interior & Grounds

The Villa

Villa Fryda has a private heatable swimming pool, located at Aroeira Golf Resort offering plenty of facilities and activities, such as golf, tennis, spa, playground, shopping centre, bars and excellent restaurants.

Lower Ground Floor

- Bedroom with two single beds
- Bedroom with two single beds
- Bedroom with two single beds
- Shower room
- Shower room

Ground Floor

- Ample living room with comfortable seating, satellite TV, fireplace and access to the garden
- Open plan dining area for 8 people and access to the terrace
- Fully equipped kitchen with cooker, dishwasher, kettle, toaster, coffee machine, fridge, freezer, oven, microwave
- Family bathroom
- Bedroom with double bed and en-suite bathroom
- Bedroom with double bed
- Bedroom with double bed

Mezzanine

- Small office room

Exterior Grounds

- Private heatable swimming pool (12 x 5 m; depth 1.20 - 2.40 m) (extra cost, see T&Cs)
- Large terrace and garden area
- Various sun loungers
- Covered terrace
- Outdoor dining
- Garden furniture
- Private parking
- Barbecue

Additional Facilities

- Wi-Fi connection
- Air conditioning (extra cost, see T&Cs)
- Central heating (extra cost, see T&Cs)
- Washing machine
- Dishwasher
- Dryer
- Bicycles available



Tourist License: 140921/AL

Location & Local Information

The Aroeira golf resort, dubbed the 'Wentworth of Lisbon' in its early years, is set amidst beautiful pine woodlands and has become a destination of choice for golfers and non-golfers alike.

With Lisbon just 25km away, and the beaches of the Lisbon Coast as close as 6km away, you don't need to be handy with a five-iron to appreciate its stunning location.

The pine woods and lakes contribute to a microclimate that offers the chance to enjoy a round of golf at any time of year. With a tropical swimming pool and four tennis courts, other sporting activities are catered for too.

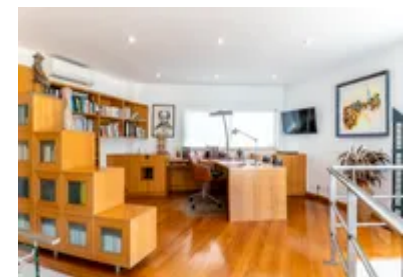
To the south, Praia do Meço is a cool, remote beach known for its surfing and nudism – indeed, Portugal's go-to naturist beach. Around 11km from here, Sesimbra is gaining popularity as a resort.

It's peaceful, family-friendly and has a laid-back calm about it. The heritage of the area is evident in churches, castles and historic buildings – the Castelo do Sesimbra offers a rewarding sea view (albeit at the end of a pretty steep climb).

For the most spectacular lookout point in the area, head for Cabo Espichel. A lighthouse and monastery sit on the dizzying cliffs, with the expansive Atlantic Ocean ahead, making this a place to go to reflect and be at one with nature – and many make the trip when visiting Lisbon, around one hour's drive north.

Extending all the way along the coast from Sesimbra to Setúbal, the Arrábida Natural Park only adds to the wonder of the region. Whether scuba diving, hiking, dolphin spotting, or even hovering above it all in a hot-air balloon, it's unforgettable in all the best ways.

Local Amenities



Nearest Airport	Lisbon Airport (32 km)
Nearest Ferry Port	Trafaira Ferry Port (17 km)
Nearest Village	Valbom (3 km)
Nearest Town/City	Aroeira (2 km)
Nearest Restaurant	Club House do Golf Aroeira (800 m)
Nearest Bar/Pub	Bambu Bar (4 km)
Nearest Supermarket	Supermercado Familiar Rebelo (3 km)
Nearest Beach	Telha Beach (3 km)
Nearest Golf	Aroeira Golf Course (700 m)
Nearest Tennis	Almada Tennis Club (6 km)

What we love

- With room for 12 guests, this villa is ideal for large group getaway – everything you need is there at the resort
- The irresistible pool and terrace, and well-kept gardens, are a big highlight of this villa
- Bedrooms are light and offer plenty of storage space, with lovely views of the pool and gardens
- Aroeira is an impressive resort with two excellent golf courses, and the spa, shops and bars are great for non-golfers

What you should know...

- A deposit for damage and breakages will be payable for stays at this villa
- A car will be necessary due to this villa's location
- Pool heating and air conditioning is available at an additional charge

Terms & Conditions

- **Security deposit:** €600 charged to client's credit card as a pre-authorisation at least 2 weeks prior to arrival and refunded two weeks after departure, subject to full inspection.
- **Arrival time:** 4 pm
- **Departure time:** 10 am
- **Energy costs included?:** Yes, included in the rental price. Air conditioning is available at an extra cost of €25 per day, to be paid with the balance.
- **Linen & towels included?:** Yes, included in the rental price.
- **Pets welcome?:** Not allowed.
- **Changeover day:** Flexible.
- **End of stay cleaning available?:** Yes. However, guests are required to leave the accommodation clean, tidy and in the same condition as on their arrival. Any extra cleaning, laundry, maintenance and/or garbage disposal required will be charged against the security deposit.
- **Smoking Allowed?:** Smoking & Vaping are not permitted.
- **Minimum stay:** 4 nights during low season.
- **Heating costs included?:** Not included in the rental price, extra €25 per day to be paid at the time of the booking (mandatory between Oct - Apr).
- **Pool heating charge?:** For those who require pool heating, there will be an additional charge of €40 per day to be paid at the time of the booking (optional). Please note that like all heated pools, pool heating and water temperature are reliant on weather and outside temperatures.
- **Tax:** Visitors Tax payable to Oliver's Travels at the time of balance payment (typically costs €1-€10 per adult per night - please enquire if exact amount is required).
- **Internet access?:** Wi-Fi internet access included.
- **Pool towels included?:** Not included in rental price, extra €5 per towel per stay, to be paid at the time of the booking (optional).