

Villa Marao

Region: Portugal Sleeps: 8

Overview

Nestled in the hills of the world-famous Douro Valley and with breathtaking views over classic vineyards and olive groves, Villa Marao is a distinctive holiday home set within unspoilt countryside.

Converted from an old school house, the villa has been carefully restored and extended to retain its charm and some original features. The sleek, stylish furnishings create a contemporary look throughout and unique touches make for a very special feel.

On the ground floor is a sizeable open plan living/dining room with a sumptuous extra large corner sofa with room for everyone to enjoy a film together on the flat screen television. A wood burning stove provides an attractive focal point for cosy evenings in. Behind is a dining area with retro-inspired table and chairs for up to twelve people. A quirky play area features two old school desks and a blackboard as a nod to the villa's previous life as a school house. The fully fitted kitchen offers a range of modern conveniences and access out onto the barbecue and garden area. There are two double bedrooms to this floor, with both having an ensuite shower room and doors opening onto a terrace with uninterrupted views of the rolling countryside. A guest toilet is ideal for when you're going in and out of the garden.

There are two bedrooms on the spacious first floor. The stunning master double bedroom has an ensuite shower room and sofa bed that sleeps an extra two children or one adult. A balcony provides superb views over the scenic landscapes that surround the villa. The twin bedroom has an ensuite shower room and also has access to a balcony.

The outside space features a private swimming pool with a selection of sun loungers and seats on the surrounding decking. Lawned areas wrap around the villa and an outdoor dining area with built-in barbecue is the perfect place to enjoy an al fresco meal with unforgettable views. An external, well-equipped games room has a pool table for some friendly competition and a comfortable seating area for relaxing.

Facilities

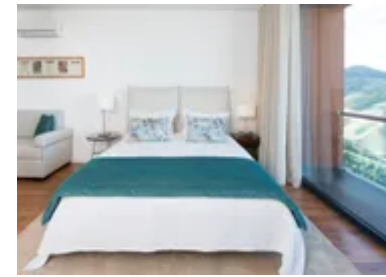
Villa • Air-Con • Wine Tasting • Ideal for Kids • Private Pool • Special Offer • Chef/Cook Available • Has Discount • Ideal for Teens • Cots (Cribs) • Heated Pool • All Bedrooms En-Suite • Ground Floor Bed & Bath • Parking Space • Wi-Fi/Internet • Rural Location • Washing Machine • Outstanding Landscapes • Coffee Machine • Hairdryer • TV • Pool/Snooker • Games Room • High Chair(s)



Interior & Grounds

Ground Floor

- Ample living room with comfortable seating, fireplace and TV
- Open plan dining area for 10 people
- Well equipped kitchen
- Games room with pool table
- Guest toilet
- Bedroom with two single beds, access to a terrace and en-suite shoer room
- Bedroom with double bed, access to a terrace and en-suite shower room



First Floor

- Master bedroom with double bed, a sofa bed, access to a balcony and en-suite shower room
- Bedroom with two single beds, access to a balcony and en-suite shower room

Exterior Grounds

- Private heated swimming pool (9 x 3.4 m)
- Large terrace and garden area
- Various sun loungers
- Outdoor dining
- Garden furniture
- Covered terrace
- Parking space
- Barbecue

Additional Facilities

- Wi-Fi connection
- Air conditioning
- Washing machine
- Coffee machine
- Hair dryer
- Cot and high chair

Tourist License: 5872/RNET



Location & Local Information

Basic amenities such as shops and cafes are within short driving distance but you'll need to head to a nearby town for supermarkets, restaurants and bars. The villa is an excellent base for touring the surrounding vineyards, many of which offer private tours and tastings.

The picturesque town of Pinhão is just a ten minute drive from the villa through winding roads cut into the terraced Douro Valley hillsides. As well as being within a well-known wine-producing region, the town also has a rich port heritage and produces some of the best in the world. You can go on guided tours of wineries and sample some of the local tipples.

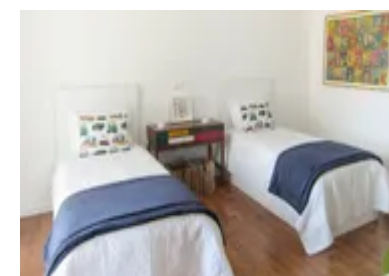
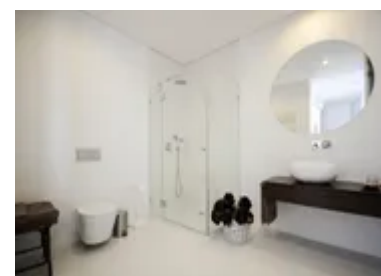
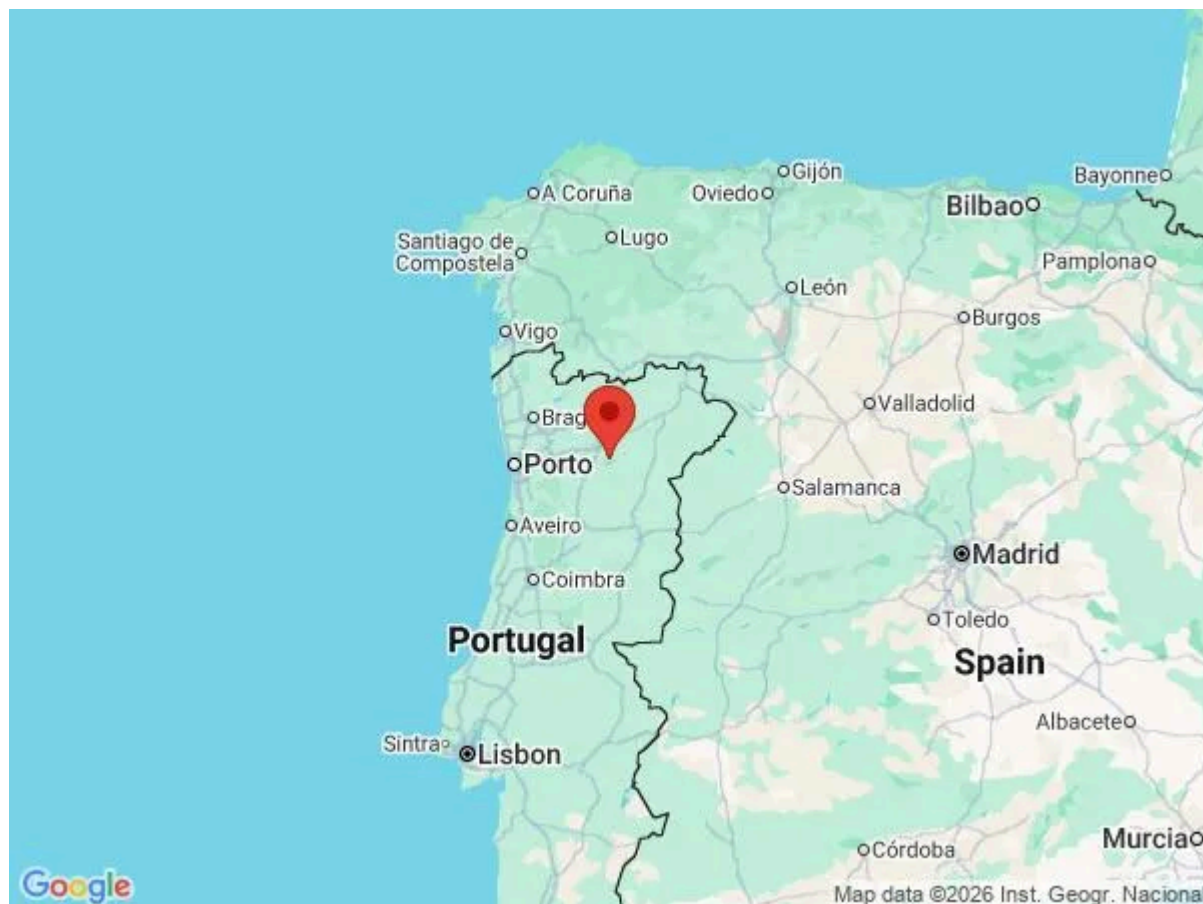
Pinhão is situated along the Douro River, meaning you can explore the area with a boat tour down the river. During a trip you'll appreciate the steep vineyard terraces from a different perspective and if you're lucky, you'll spot a range of wildlife along the way.

Another must-see attraction is Pinhão's railway station, built in 1937 and famous for its decorative blue and white azulejo tiles that depict traditional Portuguese country life. There's also a bar and shop giving you the chance to try some wine and port.

Around 12 km from the villa is Provesende, an historical town that's full of interesting sites to explore. Walk down the winding streets and you'll come across a 16th century pillory and 18th century Baroque church and fountain. There are also many old manor houses that sit alongside more modest village cottages to show how rich the area was in past centuries.

Local Amenities

Nearest Airport	Porto (122 km)
Nearest Village	Vila Real (33 km)
Nearest Town/City	Porto (119 km)
Nearest Restaurant	Casa Arco (6 km)
Nearest Bar/Pub	O Porco (7 km)
Nearest Supermarket	Amanhecer (7 km)



What we love

- A characterful villa with many original features and modern conveniences
- The simply stunning views over the vineyards, olive groves and lush green countryside
- Quirky touches that reflect the villa's original purpose as a school house
- Idyllic position in the famous wine-producing region of the Douro Valley

What you should know...

- A local maid will clean the villa twice a week and a cook is available upon request who can prepare meals for an extra cost
- Chef-cooked dinners include Douro wine and port
- There are some steps up to the entrance of the villa, so those with mobility issues should be aware

Terms & Conditions

- **Security deposit:** €450 charged to client's credit card as a pre-authorisation two weeks before arrival and refunded two weeks after departure, subject to full inspection.
- **Arrival time:** Between 4 - 7 pm
- **Departure time:** 10 am
- **Energy costs included?:** Yes, included in the rental price.
- **Linen & towels included?:** Yes, included in the rental price.
- **Pets welcome?:** Not allowed.
- **Other Ts and Cs:** First cot and high chair included in the rental price; please enquire before arrival.
- **Changeover day:** Flexible.
- **End of stay cleaning available?:** Yes. However, guests are required to leave the accommodation clean, tidy and in the same condition as on their arrival. Any extra cleaning, laundry, maintenance and/or garbage disposal required will be charged against the security deposit.
- **Smoking Allowed?:** Smoking & Vaping are not permitted.
- **Minimum stay:** 5 nights during low season. All other durations on request.
- **Heating costs included?:** Not available on this property.
- **Pool heating charge?:** For those who require pool heating, there will be an additional charge of €36 per night (to be paid to Oliver's Travels with the balance). The pool heating is available for a minimum of 7 nights. Please note that like all heated pools, pool heating and water temperature are reliant on weather and outside temperatures.
- **Tax:** Tourist tax is currently not required within the municipality of this villa, however many councils are introducing this across Portugal, so you may be required to pay this at time of travel.
- **Internet access?:** Wi-Fi internet access included.
- **Pool towels included?:** Yes, included in the rental price.