

# Silverlake - Maple House

**Region:** The South West **Sleeps:** 8

---

## Overview

Discover the tranquility of Maple House, a stunning lakeside retreat nestled within the picturesque Silverlake Resort (<https://www.oliverstravels.com/silverlake-resort-dorset/>) in the beautiful Dorset. With four comfortable bedrooms, this luxurious holiday house easily accommodates up to eight guests, offering a memorable stay for families and groups alike. With opportunities to explore unspoiled nature and wildlife, Maple House is perfect for those looking to enjoy cycling, running, boating or fishing.

Step inside to find a contemporary retreat adorned with modern amenities and elegant furnishings. The open-plan living areas provide views of the surrounding landscape, while plush sofas and a fireplace invite you to unwind in style. Large windows and dual aspect sliding patio doors effortlessly capture the stunning surroundings, allowing guests to make the most of the stunning lake views. Also on this level is the first of the double bedrooms, as well as a handy shower room, the perfect space for those with mobility issues.

Whether you're lounging by the fireplace or preparing a meal in the fully-equipped kitchen or on the outdoor BBQ, every moment is infused with comfort and sophistication. Outside, the wrap around lakeside private terrace is a tranquil spot for al fresco dining, while direct access to the lake and resort activities ensures endless opportunities for adventure, recreation and relaxation. On site, there is also a children's playground to keep the little ones entertained as well as tennis courts, perfect for those in search of some healthy competition!

Indulge in the ultimate lakeside getaway at Dorset Pearl, where every detail is designed to elevate your experience. From leisurely strolls through the reserve to exhilarating



water sports, there's something for everyone to enjoy.  
Book your stay today and immerse yourself in the serene  
beauty of Dorset's enchanting landscape.

## Facilities

Onsite Restaurants • Walking/Hiking Paths • Waterfront • Spa/Massage •  
Horse Riding • Watersports • Canoeing/Kayaking • TV • Tennis Nearby •  
Cycling • Recommended • Ideal for Xmas/NY • Hairdryer • Fishing • Golf  
Nearby • Tennis Court • Wi-Fi/Internet • Ground Floor Bed & Bath •  
Washing Machine • Shared Pool • Gym/Fitness Room • Cots (Cribs) •  
Laptop Friendly Workspace • Walk to Village • Rural Location • Modern •  
Kid-friendly museum • Kid-friendly excursions • Water excursions/Boat  
trips • Playground nearby • Playground • Heated Pool • Ideal for Babies &  
Toddlers • Ideal for Kids • Ideal for Teens • Walk to Restaurant • <1hr to  
Airport • Dishwasher • Sauna/Steam • Working Fireplace/Woodburner •  
Heating • High Chair(s) • Parking Space • Outstanding Landscapes •  
Outdoor Pursuit & Activities • Tourist Towns & Villages

# Interior & Grounds

## Maple House

### Ground Floor

- Living Room with doors to terrace
- Kitchen with dining facilities
- Bedroom with double bed
- Shower room with WC

### First Floor

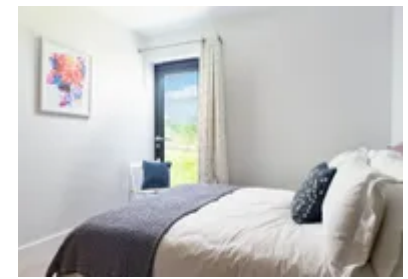
- Bedroom with super-king bed and en-suite bathroom
- Bedroom with twin beds
- Bedroom with bunk beds
- Bathroom

### Exterior Grounds

- Terrace
- Dining facilities
- Barbecue (please bring your own charcoal)

### Additional Facilities

- Wi-Fi
- Satellite TV
- Travel cot & highchair available on request
- Use of Estate spa and outdoor swimming pool
- Use of Estate tennis courts
- Bike hire
- Watersport equipment hire between March and October (paddleboards, canoes)
- Childrens playground on the estate



# Location & Local Information

Maple House invites you to experience the serene charm of Silverlake Resort, nestled amidst Dorset's picturesque landscapes. Embrace tranquility and outdoor adventure as you explore waterways, cycle paths, and the rolling countryside. Whether paddling in a kayak, canoe or paddleboard, or cycling through the scenic bike trails, adventure awaits at every turn. Enjoy a friendly game on the resort's tennis court or 3G artificial-turf Multi Use Games Area (MUGA) in Beaumont Village, all while admiring the breathtaking views of the lakes. Unwind with a leisurely stroll along the sandy shores of the dramatic UNESCO-heritage Jurassic coastline, such as Ringsted Bay, or try your hand at fishing in our well-stocked lakes.

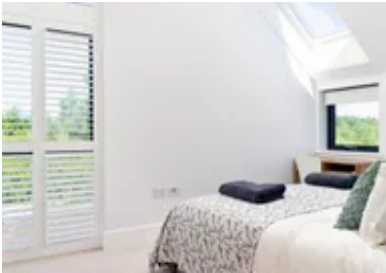
Discover nearby historic landmarks and charming villages, immersing yourself in Dorset's rich heritage. Wander through the breezy coastal town of Poole where you can hop on a ferry to neighbouring islands, uncover the rich history of Dorchester, visit the thousand-year-old Corfe Castle, or soak up the picture postcard vistas of Lyme Regis!

After a day of exploration, the Resort Spa is the perfect respite, where an outdoor pool, roof terrace, sauna, gym, library and a 'restful relaxation' lounge await.

Whether seeking relaxation or excitement, Silverlake Resort offers an unforgettable experience for every guest.

## Local Amenities

Nearest Airport	Bournemouth Airport (45.5 km)
Nearest Bar/Pub	On site (In walking distance)
Nearest Beach	National Trust - Ringstead Bay (10 km)
Nearest Golf	Came Down Golf Club (12.5 km)
Nearest Restaurant	On site (In walking distance)
Nearest Shop	Co-Op, Crossways (2.5 km)
Nearest Supermarket	Waitrose & Partners, Dorchester (9 km)
Nearest Tennis	On site (In walking distance)



Nearest Town/City	Dorchester (9 km)
Nearest Train Station	Moreton Train Station (5.5 km)
Nearest Village	Crossways (2.5 km)
Sightseeing	Durdle Door (16 km)

## What we love

- With hundreds of acres of outstanding natural habitats, the outdoor explorations are endless at Silverlake Resort (<https://www.oliverstravels.com/silverlake-resort-dorset/>)!
- The Resort Spa offers offer a tranquil sanctuary of stress-free indulgence and ultimate relaxation, with access to a shared spa, sauna and swimming pool on site!
- Relax on the private terrace, enjoying the serene calmness of the water below.
- There are plenty of activities for the whole family to participate in, guests of Maple House can hire bikes, canoes, kayaks and paddle boards for the whole family on-site (at an additional cost and subject to availability).

## What you should know...

- The house is on a gated development and so it does have neighbours.
- One of the bedrooms makes use of bunk beds and so is perhaps better suited to children than adults.
- Please be aware there are no water-based activities between November and February for health and safety reasons.
- Access to bikes, canoes, kayaks, and stand-up paddle boards are available, but are subject to additional costs.
- A travel cot and high chair are available to hire, but come at an additional cost of £10. Please bring your own linen and mattress for the travel cot.

# Terms & Conditions

- **Security deposit:** £500 charged to client's credit card and held as a pre-authorisation prior to arrival and refunded a week after departure, subject to full inspection. This is handled by the local team.
- **Arrival time:** 16:00 - 00:00
- **Departure time:** 10:00
- **Energy costs included?:** Yes, included in rental price
- **Linen & towels included?:** Yes, included in rental price
- **Pets welcome?:** No pets allowed
- **Other Ts and Cs:** Use of spa and outdoor swimming pool included in rental price, treatments priced separately. Guests must take the spa pass (usually on a lanyard) with them when they wish to use the facility as this gains them access. The spa, has an indoor and outdoor pool which are both heated to 30 degrees. There is also a sauna and steam located on the indoor poolside and an eco-pool located at the end of the building. They are welcome to either bring their own towels or hire them at the spa for £2 per towel. The gym is also located at the spa, which requires the spa pass to gain access too aswell.
- **Changeover day:** Bookings are available for the following durations only: 7 nights starting on a Monday or Friday, 2 or 3 nights starting on a Friday, or 4 nights starting on a Monday.
- **Smoking Allowed?:** No
- **Other 2:** Unfortunately, this property will not accept bookings from single sex groups which are larger than 6, even if it is not for a stag/hen party
- **Minimum stay:** Please note that there is a 2-night minimum stay.
- **Heating costs included?:** Yes, included in the rental price.
- **Internet access?:** Yes
- **Stag & Hen Do Allowed? :** Not permitted
- **Noise policy :** Fireworks and playing loud music are not permitted