

# Silverlake - Driftwood

**Region:** The South West **Sleeps:** 8

---

## Overview

Discover the tranquility of Driftwood, a stunning lakeside retreat nestled within the picturesque Silverlake Resort (<https://www.oliverstravels.com/silverlake-resort-dorset/>) in Dorset. With four comfortable bedrooms, this luxurious holiday house easily accommodates up to eight guests, offering a memorable stay for families and groups alike.

Step inside to find a contemporary retreat adorned with modern amenities and elegant furnishings. The open-plan living areas provide views of the surrounding landscape, while plush sofas and a fireplace invite you to unwind in style. Large windows and sliding doors throughout the house effortlessly capture the stunning surroundings.

Whether you're lounging by the fireplace or preparing a meal in the fully-equipped kitchen or on the outdoor BBQ, every moment is infused with comfort and sophistication. Outside, the lakeside private terrace, tranquil roof terrace or garden hammock beckon, while direct access to the lake and resort activities ensures endless opportunities for recreation and relaxation.

Indulge in the ultimate lakeside getaway at Driftwood, where every detail is designed to elevate your experience. From leisurely strolls through the reserve to exhilarating water sports, there's something for everyone to enjoy. Book your stay today and immerse yourself in the serene beauty of Dorset's enchanting landscape.

## Facilities

Onsite Restaurants • Walking/Hiking Paths • Walk to Village • Horse Riding • Ideal for Kids • Watersports • Canoeing/Kayaking • Tennis Nearby • Cycling • Villa • Fishing • Golf Nearby • Heated Pool • Special Offer • Cots (Cribs) • Has Discount • Has Offer • Ideal for Teens • Modern • Shared Pool • <1hr to Airport • Walk to Restaurant • Parking Space • Wi-



Fi/Internet • Waterfront • Rural Location • Outstanding Landscapes •  
Outdoor Pursuit & Activities • Hairdryer • Spa/Massage • Tourist Towns &  
Villages • TV • Laptop Friendly Workspace • Gym/Fitness Room •  
Dishwasher • Electric Car Charger • Sauna/Steam • Working  
Fireplace/Woodburner • Heating • Kid-friendly excursions • Water  
excursions/Boat trips • Playground nearby • Playground • Ideal for Babies  
& Toddlers • Stair gates • High Chair(s)

# Interior & Grounds

## Driftwood

### Ground Floor

- Open-plan kitchen and dining room
- Living room with sofa-bed and patio doors
- Bathroom with WC and shower

### First Floor

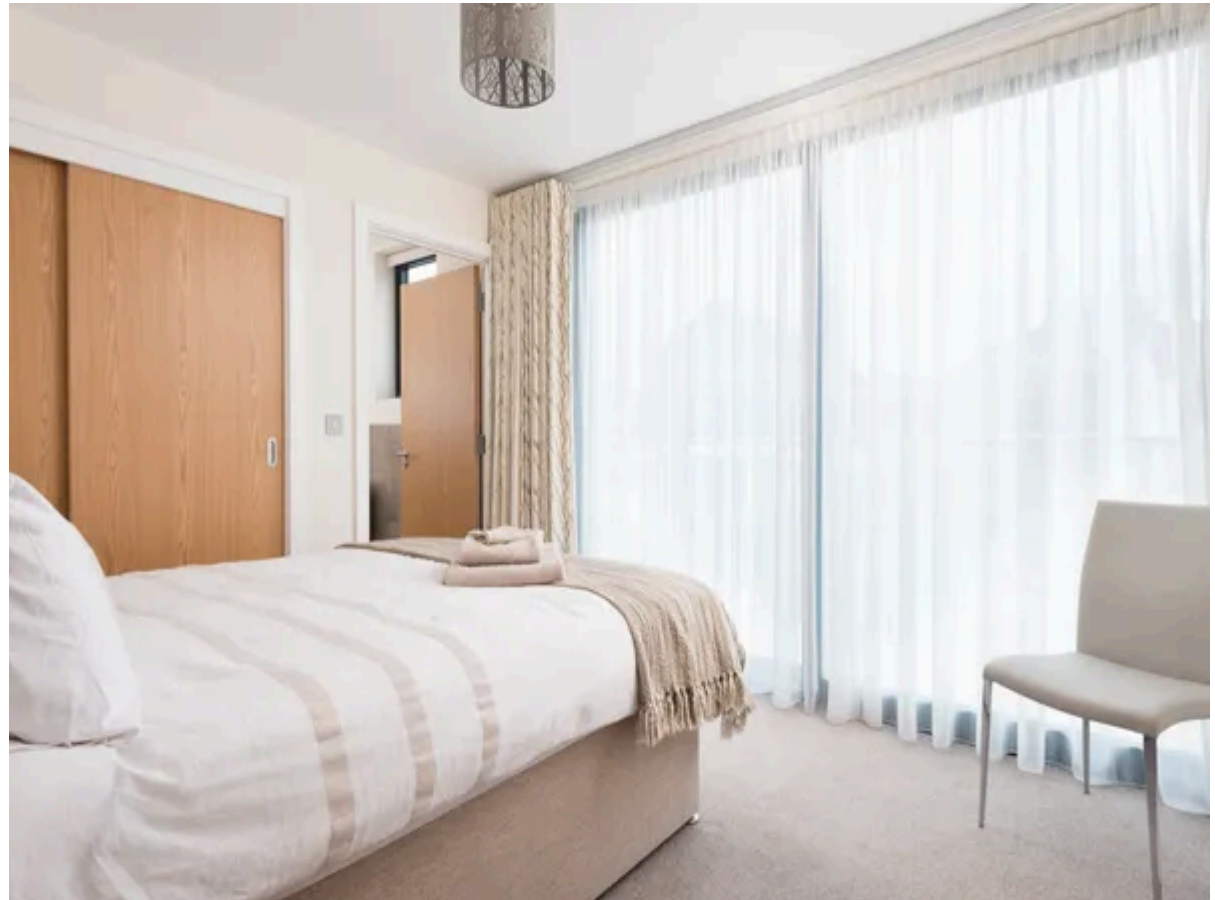
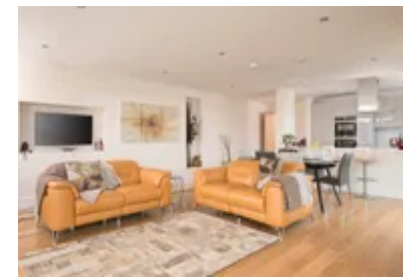
- Master bedroom with king-size bed, en-suite bathroom and balcony access
- Bedroom with king-size bed
- Bedroom with twin beds
- Bedroom with pull out truckle bed, providing further twin beds
- Bathroom with bath, overhead shower, WC and washbasin

### Exterior Grounds

- Roof terrace
- Lakefront terrace
- Dining facilities
- Barbecue (please bring your own charcoal)
- Private canoe launch platform
- Garden hammock
- Sun deck

### Additional Facilities

- Wi-Fi
- Smart TV with BT Sports & NOW TV
- Travel cot & highchair available on request
- Use of Estate spa and outdoor swimming pool
- Use of Estate tennis courts
- Bike hire
- Watersport equipment hire between March and October (paddleboards, canoes)
- Childrens playground on the estate



# Location & Local Information

Driftwood invites you to experience the serene charm of Silverlake Resort, nestled amidst Dorset's picturesque landscapes. Embrace tranquillity and outdoor adventure as you explore waterways, cycle paths, and the rolling countryside. Whether paddling in a kayak, canoe or paddleboard, or cycling through the scenic bike trails, adventure awaits at every turn. Enjoy a friendly game on the resort's tennis court or 3G artificial-turf Multi Use Games Area (MUGA) in Beaumont Village, all while admiring the breathtaking views of the lakes. Unwind with a leisurely stroll along the sandy shores of the dramatic UNESCO-heritage Jurassic coastline, such as Ringsted Bay, or try your hand at fishing in our well-stocked lakes.

Discover nearby historic landmarks and charming villages, immersing yourself in Dorset's rich heritage. Wander through the breezy coastal town of Poole where you can hop on a ferry to neighbouring islands, uncover the rich history of Dorchester, visit the thousand-year-old Corfe Castle, or soak up the picture postcard vistas of Lyme Regis!

After a day of exploration, the Resort Spa is the perfect respite, where an outdoor pool, roof terrace, sauna, gym, library and a 'restful relaxation' lounge await.

Whether seeking relaxation or excitement, Silverlake Resort offers an unforgettable experience for every guest.

## Local Amenities

Nearest Airport	Bournemouth Airport (45.5 km)
Nearest Bar/Pub	On site (In walking distance)
Nearest Beach	National Trust - Ringstead Bay (10 km)
Nearest Golf	Came Down Golf Club (12.5 km)
Nearest Restaurant	The Wise Man Inn (4.5 km)
Nearest Shop	Co-Op, Crossways (2.5 km)
Nearest Supermarket	Waitrose & Partners, Dorchester (9 km)
Nearest Town/City	Dorchester (9 km)



Nearest Train Station	<b>Moreton Train Station</b> (5.5 km)
Nearest Village	<b>Crossways</b> (2.5 km)
Sightseeing	<b>Durdle Door</b> (16 km)

## What we love

- The rooftop Skydeck provides a tranquil escape to enjoy peaceful surroundings and stunning views in complete privacy. Both double bedrooms feature private balconies, ensuring everyone can enjoy the views!
- The master suite is truly impressive with its luxury en-suite bathroom and access to a private balcony overlooking the lake.
- For those in search of a little TLC, guests of the house can enjoy access to the on-site facilities at Silverlake Resort (<https://www.oliverstravels.com/silverlake-resort-dorset/>), which include a shared spa, sauna, and swimming pool.
- A stone's throw from the glorious beaches of the Jurassic Coast.

## What you should know...

- Young children will love the rooftop Skydeck but should be supervised when using the space.
- Although safe, the development is centred round a lake so guests with small children should not be left to explore on their own.
- There is a sofa bed in the living room which may be useful for a guest who struggles with mobility, the total capacity must not exceed eight guests.
- Please be aware there are no water-based activities between November and February for health and safety reasons
- Access to bikes, canoes, kayaks, and stand-up paddle boards are available, but are subject to additional costs.
- A travel cot and high chair are available to hire, but come at an additional cost of £10. Please bring your own linen and mattress for the travel cot.

# Terms & Conditions

- **Security deposit:** £500 charged to client's credit card and held as a pre-authorisation prior to arrival and refunded a week after departure, subject to full inspection. This is handled by the local team.
- **Arrival time:** 16:00 - 00:00
- **Departure time:** 10:00
- **Energy costs included?:** Yes, included in rental price
- **Linen & towels included?:** Yes, included in rental price
- **Pets welcome?:** Sorry, no pets
- **Other Ts and Cs:** Use of spa and outdoor swimming pool included in rental price, treatments priced separately. Guests must take the spa pass (usually on a lanyard) with them when they wish to use the facility as this gains them access. The spa, has an indoor and outdoor pool which are both heated to 30 degrees. There is also a sauna and steam located on the indoor poolside and an eco-pool located at the end of the building. They are welcome to either bring their own towels or hire them at the spa for £2 per towel. The gym is also located at the spa, which requires the spa pass to gain access too aswell.
- **Changeover day:** Bookings are available for the following durations only: 7 nights starting on a Monday or Friday, 2 or 3 nights starting on a Friday, or 4 nights starting on a Monday.
- **End of stay cleaning available?:** Yes. However, guests are required to leave the accommodation clean, tidy and in the same condition as on their arrival. Any extra cleaning, laundry, maintenance and/or rubbish disposal required will be charged against the security deposit.
- **Smoking Allowed?:** No
- **Other 2:** Unfortunately, this property will not accept bookings from single sex groups which are larger than 6, even if it is not for a stag/hen party
- **Minimum stay:** Please note that there is a 2-night minimum stay
- **Fireworks and playing loud music are not permitted.**