

# Silverlake - Bella Vista

**Region:** The South West   **Sleeps:** 10

---

## Overview

Discover the tranquility of Bella Vista, a stunning lakeside retreat nestled within the picturesque Silverlake Resort (<https://www.oliverstravels.com/silverlake-resort-dorset/>) in Dorset. With four comfortable bedrooms, this luxurious holiday house easily accommodates up to ten guests, offering a memorable stay for families and groups alike.

Step inside to find a contemporary retreat adorned with modern amenities and elegant furnishings. The open-plan living areas provide views of the surrounding landscape, while plush sofas and a fireplace invite you to unwind in style. Large windows and sliding doors effortlessly capture the stunning surroundings, whilst the tranquil sky deck is the perfect place to relax in peace after a busy day exploring the resort.

Whether you're lounging by the fireplace or preparing a meal in the fully-equipped kitchen or enjoying a coffee with a view, every moment is infused with comfort and sophistication. Outside, the lakeside dining table beckons, whilst direct access to the lakes themselves and Silverlake Resort's activities and facilities ensures endless opportunities for recreation and relaxation.

Indulge in the ultimate lakeside getaway at Bella Vista, where every detail is designed to elevate your experience. From leisurely strolls through the reserve to exhilarating water sports, there's something for everyone to enjoy. Book your stay today and immerse yourself in the serene beauty of Dorset's enchanting landscape.

*\*Please note that Bella Vista can accommodate a maximum of 8 adults or 6 adults and 4 children due to the bedroom composition.*

## Facilities

Onsite Restaurants • Walking/Hiking Paths • Waterfront • Spa/Massage • Horse Riding • Canoeing/Kayaking • Tennis Nearby • Cycling • Ideal for Xmas/NY • TV • Hairdryer • Villa • Fishing • Golf Nearby • Tennis Court • Wi-Fi/Internet • Washing Machine • Shared Pool • Gym/Fitness Room • Laptop Friendly Workspace • Cots (Cribs) • Has Offer • Special Offer • Rural Location • Walk to Village • Modern • Kid-friendly museum • Kid-friendly excursions • Water excursions/Boat trips • Playground nearby • Playground • Heated Pool • Ideal for Babies & Toddlers • Ideal for Kids • Ideal for Teens • Walk to Restaurant • <1hr to Airport • Dishwasher • Sauna/Steam • Working Fireplace/Woodburner • Heating • High Chair(s) • Parking Space • Outstanding Landscapes • Outdoor Pursuit & Activities • Tourist Towns & Villages



# Interior & Grounds

## Bella Vista

### Ground Floor

- Open-plan kitchen and living room with dining facilities and access to terrace
- TV room
- Utility room
- WC

### First Floor

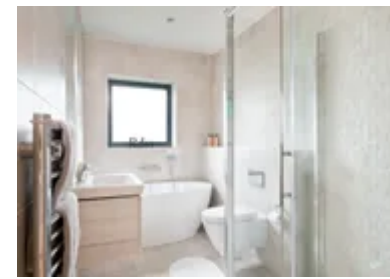
- Master bedroom with king-size bed, balcony access and en-suite bathroom with walk-in shower
- Bedroom with king-size bed, balcony access and en-suite shower room
- Bedroom with double bed
- Bedroom with two bunk beds (sleeps 4 kids or 2 adults)
- Bathroom with bath, shower, WC and washbasin

### Exterior Grounds

- Large roof terrace with seating area
- Lakefront al fresco dining area
- Grass area
- Barbecue (please bring your own charcoal)

### Additional Facilities

- Wi-Fi
- Log fire
- Wi-Fi
- Satellite TV
- Travel cot & highchair available on request
- Use of Resort spa facilities and outdoor swimming pool
- Use of Resort tennis courts
- Bike hire
- Watersport equipment hire between March and October (paddleboards, canoes)
- Children's playground on the estate



# Location & Local Information

Bella Vista invites you to experience the serene charm of Silverlake Resort, nestled amidst Dorset's picturesque landscapes. Embrace tranquillity and outdoor adventure as you explore waterways, cycle paths, and the rolling countryside. Whether paddling in a kayak, canoe or paddleboard, or cycling through the scenic bike trails, adventure awaits at every turn. Enjoy a friendly game on the resort's tennis court or 3G artificial-turf Multi Use Games Area (MUGA) in Beaumont Village, all while admiring the breathtaking views of the lakes. Unwind with a leisurely stroll along the sandy shores of the dramatic UNESCO-heritage Jurassic coastline, such as Ringsted Bay, or try your hand at fishing in our well-stocked lakes.

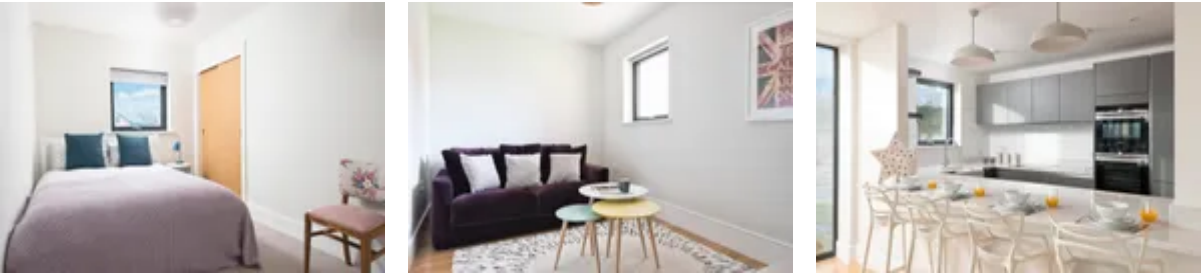
Discover nearby historic landmarks and charming villages, immersing yourself in Dorset's rich heritage. Wander through the breezy coastal town of Poole where you can hop on a ferry to neighbouring islands, uncover the rich history of Dorchester, visit the thousand-year-old Corfe Castle, or soak up the picture postcard vistas of Lyme Regis!

After a day of exploration, the Resort Spa is the perfect respite, where an outdoor pool, roof terrace, sauna, gym, library and a 'restful relaxation' lounge await.

Whether seeking relaxation or excitement, Silverlake Resort offers an unforgettable experience for every guest.

## Local Amenities

Nearest Airport	Bournemouth Airport (45.5 km)
Nearest Bar/Pub	On Site (0 km)
Nearest Beach	National Trust - Ringstead Bay (10 km)
Nearest Golf	Came Down Golf Club (12.2 km)
Nearest Restaurant	The Wise Man Inn (4.5 km)
Nearest Shop	Co-Op, Crossways (2.5 km)
Nearest Supermarket	Waitrose & Partners, Dorchester (9 km)
Nearest Town/City	Dorchester (9 km)



Nearest Train Station	<b>Moreton Train Station</b> (5.5 km)
Nearest Village	<b>Crossways</b> (2.5 km)
Sightseeing	<b>Durdle Door</b> (16 km)

## What we love

- The spacious roof terrace is the perfect spot from which to enjoy a quiet drink while watching the sunset after a busy day exploring exciting Dorset
- For those in search of complete relaxation, guests of the house have access to a shared spa, sauna and swimming pool on site.
- With hundreds of acres of outstanding natural habitats, the outdoor explorations are endless at Silverlake Resort (<https://www.oliverstravels.com/silverlake-resort-dorset/>)!

## What you should know...

- While the development is completely safe, it is centred around a lake and so we recommend that little ones are not left to explore alone
- One of the bedrooms makes use of two bunk beds meaning that a maximum of eight adults or six adults and four children can stay
- Access to bikes, canoes, kayaks, and stand-up paddle boards are available, but are subject to additional costs.
- A travel cot and high chair are available to hire, but come at an additional cost of £10. Please bring your own linen and mattress for the travel cot.
- Please be aware there are no water-based activities between November and February for health and safety reasons.

# Terms & Conditions

- **Security deposit:** £500 charged to client's credit card and held as a pre-authorisation prior to arrival and refunded a week after departure, subject to full inspection. This is handled by the local team.
- **Arrival time:** 16:00 - 00:00
- **Departure time:** 10:00
- **Energy costs included?:** Yes, included in rental price
- **Linen & towels included?:** Yes, included in rental price
- **Other Ts and Cs:** Use of spa and outdoor swimming pool included in rental price, treatments priced separately. Guests must take the spa pass (usually on a lanyard) with them when they wish to use the facility as this gains them access. The spa, has an indoor and outdoor pool which are both heated to 30 degrees. There is also a sauna and steam located on the indoor poolside and an eco-pool located at the end of the building. They are welcome to either bring their own towels or hire them at the spa for £2 per towel. The gym is also located at the spa, which requires the spa pass to gain access too aswell.
- **Changeover day:** Bookings are available for the following durations only: 7 nights starting on a Monday or Friday, 2 or 3 nights starting on a Friday, or 4 nights starting on a Monday.
- **Smoking Allowed?:** No
- **Other 2:** Unfortunately, this property will not accept bookings from single sex groups which are larger than 6, even if it is not for a stag/hen party
- **Other 3:** Fireworks and playing loud music are not permitted.
- **Minimum stay:** Please note that there is a 2-night minimum stay
- **Heating costs included?:** Yes, included in the rentla price.
- **Internet access?:** Yes