

Chevaliers Estate

Region: Heart Of England Sleeps: 20

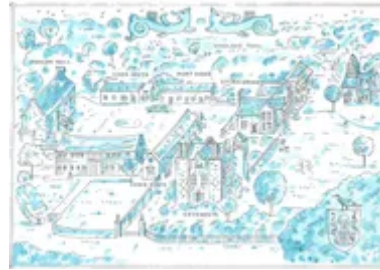
Overview

Chevaliers Estate makes a magical setting for a group celebration or get-together, the Grade 1 historic estate is brimming with charm and character and holds a wonderful position within beautiful English countryside. The house is located in a secluded hamlet deep in unspoilt Shropshire countryside, making it a tranquil haven which is perfect for those really looking for an escape.

The bedroom accommodation is spread across the Gatehouse, Moat House, Cider House, Coach House, and Library Suite, offering guests a unique opportunity to "holiday in history." Each property provides a sense of privacy while being conveniently located within 100 yards of friends and family staying in the other buildings. The Gatehouse, Moat House, Cider House, and Coach House each feature two beautifully appointed bedrooms with en-suite bathrooms, along with excellent living, kitchen, and dining facilities. The Library Suite offers a charming one-bedroom retreat with an en-suite bathroom and a kitchenette, perfect for a more intimate stay.

The Dragon Hall makes a wonderful addition to the Estate and forms the centre piece of any group stay. It has been featured by critic William Sitwell in the Daily Telegraph. The huge beamed room has been decorated in gilt frescoes by the Jerwood prize winning artist Adam Dant in the style of a 15th century Florentine Palazzo. With a pair of huge baronial chandeliers, it has the atmosphere and decor of a private Mayfair club in the country. At one end is a large Palazzo-style working fireplace, with a selection of deep sofas, luxurious arm chairs, a huge velvet Ottoman and a hidden 'honour bar' in a Chinese mirrored cabinet. The long refectory oak dining table can seat up to 20 guests (adjustable to sit any number from 10 to 20 guests) with truffle velvet chairs that are modern replicas of the Elizabeth II Coronation chairs used in Westminster Abbey in 1953. This is the perfect place for the whole group to gather and enjoy a delicious meal. There is a professional kitchen with a double RangeMaster cooker with five ring gas top, extra electric hand commercial microwave. American-style fridge/freezer, drinks fridge, dishwasher, microwave and Wedgwood china and 'King's Plate' cutlery makes this the perfect private dining space for a memorable occasion. We have a list of local chefs who can cater for special dinners and meals, along with service staff. Full English or Continental Breakfast can also be organised using the very finest local Shropshire produce. We also offer a self-catering option for those who wish to do their own cooking but may just want one or two catered special meals for the group stay.

The shared and private gardens are just as beautiful with guests of the Estate having access to the historic gardens of the Hall. The Gatehouse has a private, enclosed garden complete with a fountain, dining facilities and a barbecue can be provided on request. The Cider House has beautiful French windows looking out onto a garden view with ancient woodland beyond. The Moat House and Coach House both boast their very own sun terraces, the perfect spots for guests to enjoy their morning coffee!



**Please note that while Chevaliers Estate is listed as sleeping up to 20 adults, we can also accommodate up to 3 additional children on single beds or day beds.*

***For those in smaller parties who would still like to experience the beauty and history of Chevaliers Estate, it is possible to simply rent just the Gate House (<https://www.oliverstravels.com/britain-ireland/midlands/chevaliers-gatehouse/>), Cider House (<https://www.oliverstravels.com/britain-ireland/shropshire/chevaliers-cider-house/>), Coach House (<https://www.oliverstravels.com/britain-ireland/shropshire/chevaliers-coach-house/>) or Moat House (<https://www.oliverstravels.com/britain-ireland/midlands/chevaliers-moat-house/>).*

As mentioned in... (<https://www.cntraveller.in/gallery/the-loveliest-castles-to-rent-in-england/>)

Condé Nast Traveller

(<https://www.cntraveller.in/gallery/the-loveliest-castles-to-rent-in-england/>)

Facilities

Walking/Hiking Paths • Historical Sites • Recommended • Ideal for Kids • Ideal for Parties • Ideal for Teens • Quirky (Unique) • Manor • Has Discount • Special Offer • Pets on Request • Instagrammable • All Bedrooms En-Suite • Ground Floor Bed & Bath • Heritage Collection • Country Estate • Wi-Fi/Internet • Rural Location • Outstanding Landscapes • Outdoor Pursuit & Activities • Tourist Towns & Villages • Working Fireplace/Woodburner • Heating • Caretaker/Owner on Site • Ideal for Babies & Toddlers

Interior & Grounds

The Estate accommodation is set out over the Gatehouse, Moat House and Coach House. Guests of the Estate can also make use of the grand Dragon Hall, the ideal entertaining space.

The Dragon Hall (new for Summer 2022!)

Impressive dining and events space with a recreation of a 15th century Florentine palazzo. The space can be laid up for special events, seating 14 for intimate dinners or 40 guests for larger celebrations

- Sitting area with Clearview stove in a Tudor fireplace and comfortable sofas

Chevaliers Gatehouse (Sleeps 4 adults plus 1 child/teen)

The Gatehouse accommodates up to four adults in two separate suites and has its own private garden with fruit trees and a fountain.

Ground Floor

- Dining room with original sixteenth century Tudor fireplace
- Kitchen

First Floor (located up a carved oak spiral staircase)

- Master suite with super-king four poster canopy bed
- Wet-room style shower room
- Sitting room area with TV

Second Floor (located up a carved oak spiral staircase)

- Master suite with super-king four poster canopy bed and single bed, free-standing claw bath, ensuite shower room and oak library area with TV and seating area

Chevaliers Moat House (Sleeps 4)

The accommodation is set out over one level.

Ground Floor

- Open-plan living area with log burner
- Kitchen with dining facilities
- Bedroom with king-size bed with TV and en-suite bathroom with bath, WC and washbasin
- Bedroom with king-size bed with TV and en-suite bathroom with bath, WC and washbasin

Exterior Grounds

- South-facing Terrace
- Seating

The Cider House (Sleeps 4 adults plus 1 child/teen)

The Cider House is set over two floors. The ground floor works especially well for families with a member who may have limited mobility needs. With large French windows, this abode looks into a beautiful garden with ancient woodland beyond, making it the perfect country escape.

- Sitting room with open log fire and large smart TV with a comfortable cream sofa and armchairs
- Fully fitted bespoke granite kitchen with a top and bottom Rangemaster Professional oven and large double fridge
- Downstairs bedroom is spacious with a king size sleigh bed. To accompany



this bedroom, a luxurious bath has been designed for multiple generational use with a bath and wet room style shower.

- The upstairs bedroom holds lots of charm in red Toile de Joie and has a luxurious king size bed and a single bed. The bathroom has a lovely bath and a stand up shower option.

The Coach House (Sleeps 6 adults plus 1 child/teen)

Accommodating six adults, the former 19th century coach house with exposed oak beams boasts a large sitting room and access to a private patio.

- Living room with TV and patio doors leading to terrace
- Kitchen with dining facilities
- Bedroom with king-size bed, single day bed, and en-suite bathroom
- Bedroom with king-size bed and en-suite bathroom
- Mezzanine level with twin room with two single beds

The Library Suite (Sleeps 2)

A charming one-bedroom retreat with an en-suite bathroom and a kitchenette, perfect for a more intimate stay.

- Bedroom with king-size bed and smart TV
- En-suite bathroom with bath/shower and WC
- Kitchenette
- Workspace

Additional Facilities

- Wi-Fi throughout
- Travel cot & high chairs available on request
- Parking

Location & Local Information

Chevaliers Estate is situated within a secluded hamlet deep in the Shropshire countryside, but lies within four and a half miles of historic Bridgnorth and four miles of the pretty market town of Much Wenlock. Next to the Hall is the historic Norman church of St Michael with its 12th century wall paintings and famous 12th century font.

Chevaliers Estate remains a haven of peace and rural beauty today – an ideal place to explore Shropshire and the Heart of England, from the gastronomic centre of Ludlow to the Ironbridge Gorge Museum, the Shropshire hills and many other historic houses and gardens, including the Dower House Gardens in nearby Morville of Dr Katherine Swift (author of the bestselling book *The Morville Hours*) and the world famous nursery gardens of David Austin Roses.

Bridgnorth, four miles away, is an attractive market town famous for its funicular railway and the many flights of steps which connect the High and Low Towns. Regular steam trains also run from here along the Severn Valley Railway. The town has many charming pubs and bistro restaurants, as well as high street shops, a supermarket and a cinema.

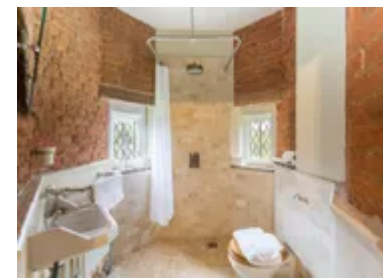
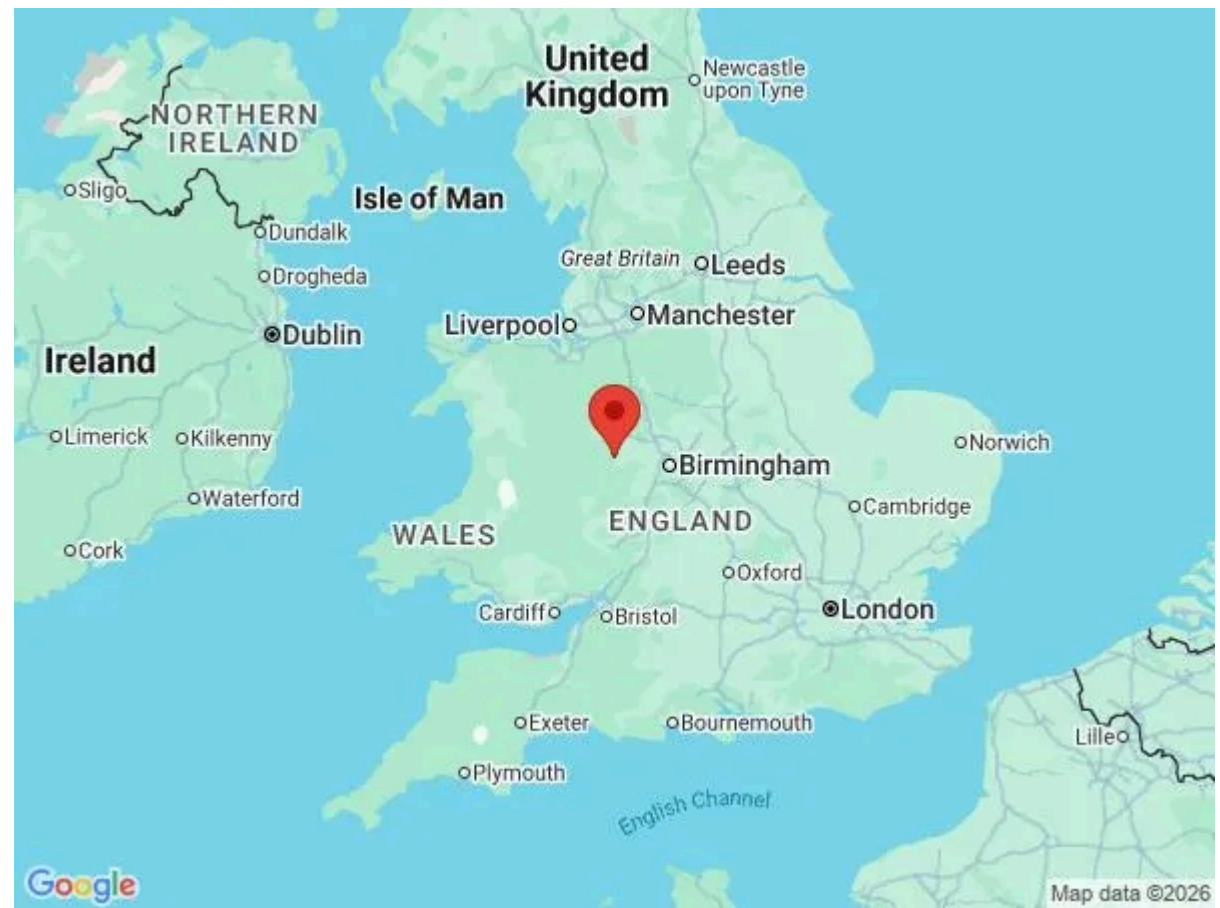
Much Wenlock, five miles away, has been voted the second most beautiful town in England. You can stroll around the ruins and grounds of the ancient Wenlock and Buildwas Abbeys (Wenlock Abbey was one of the most important in the 15th century), go antique shopping, visit the local Olympian museum, browse for second hand books (Wenlock Books won the coveted Independent Bookseller of the Year award in 2006) or go shopping at the artisan shops and galleries or the traditional butcher, Ryan's, that has won a national award for Best Butcher in Britain.

Half an hour's drive away to the south-west is historic Ludlow, one of the gastro capitals of England with award winning Michelin restaurants, secluded gastro-pubs, historic market square and famous castle ruins where the two 'Princes of the Tower' were brought up in the late 15th century.

To the north-west, also half an hour away, is historic Shrewsbury, birthplace of Charles Darwin, with its old cathedral, market squares, theatre and riverside restaurants.

Chevaliers Estate is conveniently located for access to the M5, M6, M54 and M40 motorways. The nearest station is fifteen miles away with frequent inter-city trains from London, Manchester and Glasgow and services to Wales and the West Country.

The nearest airport is Birmingham International Airport, approximately 40 miles away.



Local Amenities

Nearest Airport

**Birmingham
(78km)**

Nearest Town/City	Bridgnorth (6.4km)
Nearest Restaurant	(6km)
Nearest Supermarket	Sainsburys (5.9km)

What we love

- Walk the same grounds as its famous visitors, including King Edward V, Charles I and Sir John Betjeman
- The Estate is perfect for groups of couples or families, offering the opportunity for private spaces
- Feel like you're in an Elizabethan drama with towering turrets, Tudor-style dining room and spiral staircase
- On request and for an additional charge, enjoy delicious catered meals in the impressive Dragon Hall - the perfect setting for your special occasion!

What you should know...

- Situated down narrow country lanes 2.5 miles from the main road, the house may be better for quiet evenings in.
- While the Gatehouse may not be best suited for those with limited mobility, accommodation is set out over one level in the Moat House, and the Cider House has a ground floor bedroom and bathroom, making them potentially better options.
- Due to the rural location the internet speed is variable and can fluctuate when demand is high.
- The owners offer their in house catering and cannot accept bookings with local catering companies.
- Please note that the property owners live on-site, and will be very happy to help.

Terms & Conditions

- **Security deposit:** £500 charged to client's credit card by Oliver's Travels as a pre-authorisation at least 2 weeks prior to arrival and refunded two weeks after departure, subject to full inspection.
- **Arrival time:** 4pm
- **Departure time:** 10am
- **Energy costs included?:** Yes, included in rental price
- **Linen & towels included?:** Yes, included in rental price
- **Pets welcome?:** A maximum of 2 well-behaved dogs allowed on request at the time of booking, per property. Please note that there will be an additional charge of £30 per dog, per stay.
- **Other Ts and Cs:** A camp bed can be provided to accommodate an additional child under the age of 12 for an additional charge of £25. Please enquire at time of booking.
- **Changeover day:** Flexible
- **End of stay cleaning:** Standard changeover clean included in the price. Guests are required to leave the accommodation clean, tidy and in the same condition as on their arrival. Any extra cleaning, laundry, maintenance and/or rubbish disposal required will be charged against the security deposit.
- **Smoking Allowed?:** No
- **Other 2:** Please note the owners live onsite
- **Minimum stay:** 2-nights. 3-nights over Bank Holidays, Easter, Christmas and New Year.
- **Internet access?:** Yes. However please note that due to the rural location the internet speed is variable and can fluctuate when demand is high

Please note that the owners offer their own catering and service staff, that can be enquired at the moment of booking. Bookings with local catering companies are not accepted.