

Chateau Du Mas

Region: Aquitaine **Sleeps:** 10

Overview

This beautiful 18th Century Château offers the perfect blend of historic elegance and modern amenities. With accommodation for 8 adults in four large rooms, three with en-suite facilities, and a dedicated nursery for children, this property is ideal for large families or multi-generational groups holidaying together.

Chateau du Mas is a private estate set within spectacular parkland, offering panoramic views across the countryside and a large private and heated pool for guest use. The house is close to a historic village and also has direct access to cycling and walking routes. Riding, golf and paintball are all within 20 minutes.

The property's charming owners live in a cottage onsite with their two daughters. They have thought of everything that you might need to have a wonderfully relaxing time while on holiday. The daily housekeeping service is a welcome break from your daily routine and home cooked food is available, meaning you can arrange to have anything from a picnic to a formal dinner party delivered to the Chateau.

Facilities

Pure France • Chateaux & Castles • Cycling • Historical Sites • Walking/Hiking Paths • Wine Tasting • Wi-Fi/Internet • Golf Nearby • DVD • Walk to Village • Rural Location • Indoor Games • Cots (Cribs) • Private Pool • Games Room • Maid Service Included • Chef/Cook Available • Heritage Collection • Babysitting Available • On-Site Concierge • Pool Safety Feature • Heated Pool • Ideal for Babies & Toddlers • Ideal for Kids • Stair gates • Booster seat • Plastic crockery • Bath toys • Changing mat • Potty • Ideal for Teens • Bottle steriliser • Baby monitor • Satellite TV • Outdoor Games • Working Fireplace/Woodburner • Heating • Caretaker/Owner on Site • High Chair(s) • Fenced Grounds • Outstanding Landscapes • Outdoor Pursuit & Activities • Tourist Towns & Villages



Interior & Grounds

Interior

The large, light & airy reception rooms are both charming & relaxing with original wood panelling, ornate plasterwork and the addition of WiFi & satellite TV means you really get the best of both worlds.

You enter the Chateau into a wonderful hall, the centre and hub of the property. There are sweeping stairs to two further floors direct from here. Leading from this hall are doors to the kitchen and playroom and to the front of the chateau the dining room and two reception rooms.

The kitchen is a large room, fully fitted with all the mod cons and table and chairs for informal meals with the family. There is plenty of space to use all the wonderful ingredients that you will find in the local markets and experiment with the local produce.

Opposite the kitchen on the other side of the hall is the playroom. Here your children will be delighted with the huge array of toys for all ages. The children will have their own space to relax and escape the heat of the sun or just to unwind at the end of a busy day with a movie or a quiet game. You too will be able to make the most of this downtime as the playroom has access to the sitting room so you can sit and enjoy some peace of your own whilst the children play happily.

Running along the front of the Chateau with stunning views down the valley to the charming medieval town of Dignac, are the dining room and two reception rooms. The dining room is set up to accommodate 8 adults and is a sumptuous place to spend long evenings around the table with family and friends. Don't forget, if you are here for a special occasion the owners will be more than happy to cater for you as well.

First Floor

Following up the sweeping staircase to the first floor you will find 2 double bedrooms (one ensuite bathroom), a twin room (ensuite shower room) that can be made up as two single beds or one super king-size bed and a nursery room with two beds and a cot. There is a further shower room just next to the double and nursery, this also has the laundry facilities for the Chateau. The bedrooms are charmingly decorated with good quality beds and linen and have the same stunning views over the valley. All the bedrooms are large enough for a cot to be added and with the traditional shutters at all the windows small people will not have their sleep disturbed by the morning sun.

On the **second floor** you will find the third double room, ensuite shower room and landing area set up with comfortable seating for an "escape from it all" space. This is an ideal room for accompanying but agile grandparents or any teens in the party.

Exterior

Set high on a hillside & offering spectacular views, it is possible to walk or cycle directly from the grounds into the local countryside where an abundance of plant & wildlife can be found. If you prefer to relax, the large heated pool with it's tented pavillion or the rear terrace with it's fountain & large pond are delightful places to while away your time.

The Château is surrounded by 2 hectares of parkland, with a further 4 hectares of woodland which allows for the utmost privacy. There is a slide,



swings, playhouse and a selection of garden toys available.

At the rear of the property, there is a covered terrace beside a charming raised pond, a gentle spot to enjoy some alfresco dining. There is sufficient seating for the Chateau's occupants around a large wooden table, a BBQ and lighting for dining outside under the stars but it is also not far to walk to the kitchen.

To the front of the Château are the sweeping stone stairs leading down to the to the enclosed pool area on the first terrace. The beautiful 12m heated pool has a pool side gazebo for shade and plenty of sun loungers for the times you want to soak up some sun . The pool area also has lighting so that you can enjoy the area on the warm barmy evenings when a swim is so very welcome.

Amenities

- Adult capacity: 8
- Child capacity: 2
- Linen and Towels included
- WiFi and Satellite TV
- Baby cots and highchairs
- Enclosed grounds
- Enclosed outdoor, heated swimming pool
- BBQ and patio area
- Daily Maid service and shopping service included
- Babysitting and catering service available upon request

Location & Local Information

This family friendly Chateau provides an elegant base to enjoy the lovely gentle countryside of the Charente. Just a stones throw from the Dordogne but without the crowds, there is so much to see in the area that you will never be short of things to do,

For days out there are markets, golf courses, horse riding, swimming, beaches and activity parks all within 20 minutes.

The beautiful ramparted city of Angoulême is just a 30 minute drive away and is a wonderful place to wander and explore. The city itself is the world capital for Bande Dessinée (comic strip), and here you will find many of the buildings decorated with beautiful art work and a fascinating museum dedicated to the art. Alongside this, the city itself has stunning architecture, traditional markets, beautiful gardens, pavement cafes and a variety of restaurants.

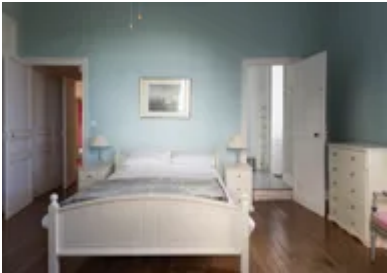
Accrobranche in Soyaux, only a 15 minute drive away, is a fantastic place for all ages from 3 years upwards to have fun together, climbing the trees with ropes and harnesses, completing differing levels of difficulty. For the very small there is a traditional playground with swings and slides next to this, or if this is too energetic for you, there is plenty of space to just sit in the shade of the trees with a coffee while the children burn off some energy:
www.accroparc-de-soyaux.com

If energy burning is what your small people need then Toboggan & Cie is just the place for the odd inclement day. An indoor adventure play ground with all the usual ball pools, ropes and soft play:
<https://tobogganetcie.com/angouleme/>

For those of you for whom a beach and a bucket and spade is a necessity on holiday then the 23Ha Fresh water lake at the Plan d'Eau just outside Angoulême is a fabulous place for a grand day out. It has lovely sandy beaches and a large range of water sports on offer. Just next to this is Angoulême's water park Nautilus where you will find indoor and outdoor pools, flumes, rapids, wave pool and gentle areas for small people to play:
www.nautilus.fr

Local Amenities

Nearest Airport	Limoges Airport (95km)
Nearest Airport 2	Bergerac Airport (102km)
Nearest Airport 3	Aéroport de Poitiers-Biard/Bordeaux Airport (132km/137km)
Nearest City	Angoulême (17km)
Nearest Golf	Golf Club d'Angoulême (17km)



Nearest Restaurant	La Lavalette, Villebois Lavalette (10km)
Nearest Shop	Bakery in local village (1km)
Nearest Supermarket	Super U et Drive (8km)
Nearest Train Station	Angoulême (17km)
Nearest Village	Small local village (1km)

What we love

- With manicured parkland and woodland beyond, the château's grounds are beautifully presented
- We love the heated swimming pool, especially as it is lit up in the evening, and the dining terrace with barbecue for al-fresco meals on warm summer nights
- Spectacular architecture both inside and out with many original features such as ornate plasterwork mouldings, original oak staircase and stone-vaulted ceilings
- The local village is home to a *boulangerie* whilst there is golf, tree-top adventure centres, horse-riding, waterparks and plenty more nearby for young and old
- Visit the magnificent city of Angoulême famous for its museums and annual vintage motor rally, Le Circuit des Remparts

What you should know...

- Château Du Mas sleeps up to 8 adults and 2 children across three doubles, one twin and a nursery bedroom.
- Guests need to be able to manage steps to stay at this wonderful château.
- The welcoming owners and their two daughters live on site in a cottage and can help arrange extra services if needed.
- Walking distance to a village however please note that some parts of the route do not have pavements.

Terms & Conditions

- **Security deposit:** £1000 paid via bank transfer to the owner before arrival and refunded two weeks after departure, subject to full inspection.
- **Arrival time:** 4.00 p.m.
- **Departure time:** 10.00 a.m.
- **Energy costs included?:** Yes.
- **Linen & towels included?:** Yes.
- **Pets welcome?:** Not allowed.
- **Other Ts and Cs:** Weddings, stag/hen parties and any special events are on request only and subject to prior arrangement with the owner and additional charges.
 Château Du Mas sleeps up to 8 adults and 2 children across three doubles, one twin and a nursery bedroom.
- **Changeover day:** Saturday.
- **End of stay cleaning available?:** Standard changeover clean included in the price. Guests are required to leave the accommodation clean, tidy and in the same condition as on their arrival. Any extra cleaning, laundry, maintenance and/or rubbish disposal required will be charged against the security deposit.
- **Smoking Allowed?:** Not allowed.
- **Insurance:** It is recommended that all guests take out insurance to cover against potential cancellation and any accidental damage caused during your stay at the property.
- **Minimum stay:** 7 nights.
- **Heating costs included?:** Yes.
- **Tax:** French Visitors Tax payable to Oliver's Travels at the time of balance payment (typically costs €1-€10 per adult per night - please enquire if exact amount is required).
- **Pool towels included?:** Yes.
- **Pool opening dates?:** Please note that pool opening dates are subject to local weather conditions and pool maintenance requirements and that cooler months may not be suitable for swimming.