

Chateau Alois

Region: Belgium **Sleeps:** 35

Overview

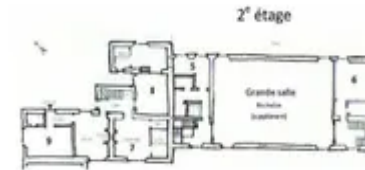
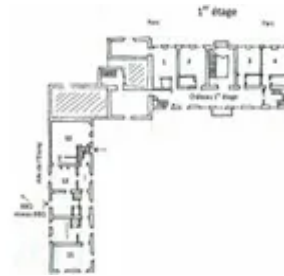
The historic Chateau Alois sleeps up to 35 guests and is the ideal place to stay with family and friends and a wonderful wedding venue.

Beautifully positioned on the banks of the River Bocq and just over 3km from a gorgeous little town, within easy reach of Calais and Brussels, Château Alois comprises of a main building and two wings surrounding a courtyard and has a number of large reception rooms, making it the perfect party or conference venue. All of the bedrooms have en-suite bath or shower rooms.

Château Alois was once home to an important Bishop and dates back to the 12th century. Its ten hectares of grounds incorporate an extensive park with many century old trees. You can enjoy fishing, canoeing and swimming in its private lake and its woods are perfect for walking and cycling trips. There is also an all-weather tennis court on site and a new addition of a wonderful relaxation area including a Finnish sauna.

Facilities

Ideal for Kids • Weddings • Ideal for Parties • Romantic • Tennis Court • Golf Nearby • Chateaux & Castles • Cycling • Fishing • Historical Sites • Recommended • Canoeing/Kayaking • Walk to Village • Walking/Hiking Paths • Cots (Cribs) • Special Offer • Ideal for Teens • Great Value • Marquee Hire Permitted • Has Discount • Maid Service Available • Chef/Cook Available • Pets on Request • All Bedrooms En-Suite • Outdoor Ceremony • Wheelchair Access • Flexible Catering Options • Heritage Collection • Wi-Fi/Internet • Waterfront • Allow External Caterers • Rural Location • No Corkage • Indoor Reception Available • Washing Machine • Outstanding Landscapes • Coffee Machine • Outdoor Pursuit & Activities • Tourist Towns & Villages • TV • Pool/Snooker • Table Tennis • Games Room • Indoor Games • DVD • Tumble Dryer • Dishwasher • Microwave • Sauna/Steam • Table Football • Working Fireplace/Woodburner • Heating • Conference Facilities • Badminton • Croquet • High Chair(s)



Interior & Grounds

Château Interiors

- Large living room (65m²) with open fireplace, CD player and cable TV
- Dining room (30m²) with table for up to 36 guests
- Kitchen (30m²), well-equipped including AGA stove, ceramic hob, microwave, dishwasher, fridge, freezer, kettle, coffee percolator, toaster, Nespresso machine, food processor and fruit press
- Access to cellar with additional freezer, washing machine, tumble dryer and ironing facilities
- Salle des Chasseurs (50m²) with large open fireplace, bar area with fridge, billiards table and games

First Floor (can all be accessed via lift or stairs)

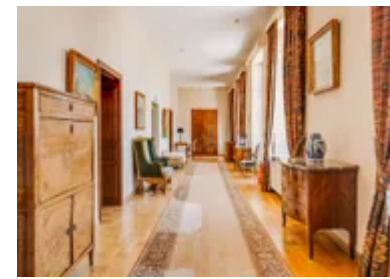
- Bedroom 1 (22m²) with double bed (160cm) and en suite bathroom with bath, shower, two sinks and WC
- Bedroom 2 (23m²) with double bed (160cm) and en suite bathroom with shower, two sinks and WC
- Bedroom 3 (21m²) with double bed (150cm) and en suite bathroom with bath, two sinks and WC
- Bedroom 4 (20m²) with two single beds (90cm each) and en suite bathroom with bath, two sinks and WC

Second Floor (via stairs or lift)

- Small simple bedroom 5 (12m²) with small double bed (120cm) and en suite bathroom with shower, sink and WC
- Second Floor (south-wing, via stairs only)
- Simple bedroom 6 (25m²) with four single beds (90cm x 3 and 70cm x 1) and en suite bathroom with shower, sink and WC

Château Wing Bedrooms (upper floor, connected to the main building via stairs)

- Bedroom 7 (21m²) with two single beds (90cm and 80cm) and bathroom with bath, two sinks and WC
- Bedroom 8 (28m²) with four single beds (90cm x 2,



80cm x1 and 70cm x 1) and bathroom with bath and two sinks

- WC (in corridor)
- Bedroom 9 (30m²) with two single beds (90cm and 80cm) and bathroom with shower, sink and WC

Left Wing Annexe Interiors (accessed from courtyard or park)

Upper Ground Floor (via 7 steps from courtyard)

- Bedroom 10 (40m²) with double bed (160cm), sofa-bed (150cm) and bathroom with shower, sink and WC

Upper Floor (via 19 steps from courtyard)

- Bedroom suite 11 (50m²) with four single beds (90cm each) and bathroom with bath, shower, two sinks and WC
- Bedroom 12 (20m²) with two single beds (90cm each) and bathroom with shower, sink and WC
- Direct access to park

Top Floor (via 26 steps from courtyard)

- Bedroom 13 (17m²) with two single beds (90cm each) and bathroom with bath, two sinks and WC
- Simple bedroom 14 (17m²) with double bed (140cm) and bathroom with shower and sink
- WC (in corridor)

Relaxation Area (25m²)

- Finnish sauna and wood stove
- Armchairs and bench
- 2 x shower cabins

Outside Grounds (nearly 10 hectares)

- Covered dining area (60m²) for up to 36 guests (enclosed on three sides) with lighting, barbecue and lake view
- Courtyard
- Large dining terrace
- Garden furnishings

- All-weather tennis court
- Ping-pong table (bring your own rackets and balls)
- Croquet and badminton
- Parkland with ancient trees and woodland
- Fishing by the river (licence required)
- Large lake/étang (for fishing/kayaking)
- Meadow/stables with animals (no access)
- Parking

Location & Local Information

The chateau is easily accessible; it is only 85km from Brussels (for Eurostar) and 284km from Calais. The local town is only 3.5km away and has a number of excellent restaurants, a supermarket and a train station.

It has a beautiful garden and terrace for al fresco dining and is renowned for its fresh seasonal cuisine. Of course, there are also a whole host of other local restaurants which cater to all tastes and budgets.

Picturesque, cultural and historic, Namur has a colourful range of tranquil woodland, pasture, valleys, small lakes and meandering rivers as well as a strong cultural heritage. Activities include walking, horse riding, mountain biking, canoeing, kayaking on the River Lesse, golf, archery, delta-flying, rock climbing, caving, quad-biking, karting, and adventure trailing.

Outside the city we recommend visiting the caves of Han and La Merveilleuse (Dinant), the Gallo-Roman ruins of Malagne, the ruins of Montaigle (Falaën), Freyr, Lavaux-Sainte-Anne castles, the Gardens of Annevoie and some of 'Les Plus Beaux Villages de Wallonie' (Wallonia's Most Beautiful Villages) such as Celles.

The Brussels South Charleroi Airport is about 60 km far from the chateau; by car it takes about 43 minutes (highway). By train, there is at least one departure each hour and the station of Ciney is 3.5 km far from the castle. It takes 1h30 by train from the Brussels South Airport via Charleroi, Namur and Ciney.

Local Amenities

Nearest Airport	Brussels South Charleroi Airport (61km)
Nearest Airport 2	Brussels Airport (87km)
Nearest Train Station	Gare de Ciney (3.5km)
Nearest Village	Small rural village/Ciney (1.3km/3.5km)
Nearest Restaurant	Ciney (3.5km)
Nearest Supermarket	Carrefour market (3.5km)
Nearest Town	Namur (29km)
Nearest City	Brussels (85km)



Nearest Tennis	All-weather court on site (0km)
Nearest Golf	Royal Golf Club du Château d'Ardenne (20km)

What we love

- A gorgeous, historic château ideal for a holiday with family and friends as well as being a beautiful wedding venue
- The dining room, with its open fire, will make you feel like you are attending a medieval banquet!
- The château now features a wonderful relaxation area which includes a Finnish sauna and a wood stove
- Situated in Belgium, this chateau is perfect if you want to explore Benelux or Northern France
- A Michelin starred restaurant is only a short drive away from the château!

What you should know...

- Short stays are permitted both on weekdays and weekends - please enquire for a tailor-made quote.
- The style and configuration of the bedrooms varies therefore please discuss requirements.
- The local town is 3 km away and a car is recommended to make the most of your holiday.
- Please note that the Wi-Fi is only suitable for casual use. As there is no fibre connection, it may not support streaming connections required for professional use.
- The owner has informed us that this property has wheelchair access. However, please contact us before booking so we can discuss individual accessibility requirements with the owner to ensure that this property is suited to your specific needs.

Terms & Conditions

- **Security deposit:** €1000 paid via bank transfer to the owner before arrival and refunded two weeks after departure, subject to full inspection.

- **Arrival time:** 4.00 p.m. - 7.00 p.m.

- **Departure time:** 10.00 a.m. (weekdays), 12.00 p.m. - 6.00 p.m. (weekend)

- **Energy costs included?:** Prepaid and after stay calculated on the actual consumption. Services deposit for electricity, water and heating varying according to seasons and lengths as follows: - summer weekend €205; - summer week €465; - winter weekend €620; - winter week €1550; - intermediate season weekend €320; - intermediate season week €765. Season distribution regarding service deposit - - Summer season : May to September - Intermediate : October and April - Winter : November to March. There is also a charge for the energy used when using the new sauna - approx €5 for a one-hour session including one hour of heating beforehand.

- **Linen & towels included?:** Linen: €10 per person / Towels: €4 per person. Please bring own bathrobes for the sauna (these may be possible to rent in the near future).

- **Pets welcome?:** One small dog may be permitted, on request only and with prior agreement with the owner.

- **Other Ts and Cs:** No eating in bedrooms. Weddings, stag/hen parties and any special events are on request only and subject to prior arrangement with the owner and additional charges. Party Policy: outside doors must be closed at midnight. At 2am the noise must be reduced and at 3 am music must be completely switched off and the party. ONLY ONE dancing or high musical evening per stay will be permitted. The owner has informed us that this property has wheelchair access. However, please contact us before booking so we can discuss individual accessibility requirements with the owner to ensure that this property is suited to your specific needs.

- **Changeover day:** Monday to Friday (end of afternoon).

- **End of stay cleaning available?:** €425 for weekend stays/ €515 for week stays. There is a €25 surcharge for weddings. This is paid in cash on arrival. Please note that rubbish disposal and recycling are not included (extra €22.5). Guests are still required to leave the accommodation clean, tidy and in the same condition as on their arrival. Any extra cleaning, laundry, maintenance and/or rubbish disposal required will be charged against the security deposit.

- **Smoking Allowed?:** Not allowed.

- **Minimum stay:** Short stays are permitted both on weekdays and weekends - please enquire for a tailormade quote.

- **Heating costs included?:** No, see "Energy costs" tab for details. Firewood is available for €3 per set.