

# Beach Bay Cottage

**Region:** The South West   **Sleeps:** 10

---

## Overview

Beach Bay Cottage makes a wonderful base for those wanting to explore the beautiful North Devon countryside. Beach Bay's location within the heart of the village of Croyde makes it an ideal choice for families who wish to be within a short distance of a range of excellent amenities including restaurants, pubs and shops as well as close to some of the region's best beaches, including Croyde, Saunton Sands and Putsborough.

The cottage has been lovingly modernised with contemporary interiors which are complemented with effortlessly chic furnishings. Beach Bay can comfortably accommodate up to ten guests across its four well-appointed bedrooms making it an excellent option for two families holidaying together. Please note however, that a maximum of six adults can be accommodated.

On the ground floor is the main living space which comprises of a lounge area with cosy corner sofa and wood burner, perfect for snuggly evenings after long days spent on the beach! Also on this level, is the fully-equipped kitchen and dining area. Upstairs, on the first floor is the first of the double bedrooms as well as two of the family bathrooms. On the second floor, is the master double bedroom which boasts en-suite bathroom, as well as a bunk bed room, perfect for younger guests! On the third floor, is the final double bedroom and family bathroom.

Outside, the terrace makes the perfect spot for the whole family to gather on a warm evening, cook up a storm on the barbecue and enjoy a meal al fresco. The hot tub makes a fabulous addition for those who are really in need of a long soak and some rest and relaxation!

*\*Please kindly note that total maximum capacity is 6 adults and 4 children. Additionally, there is room for up to 2 cars to park at the property.\**

## Facilities

Walking/Hiking Paths • Wi-Fi/Internet • Ideal for Xmas/NY • Golf Nearby • Fishing • Sailing • Horse Riding • Recommended • Cycling • Walk to Beach • Tennis Nearby • Historical Sites • Canoeing/Kayaking • Walk to Village • Indoor Games • Cots (Cribs) • DVD • Beach Nearby • Great Value • Modern • Cottage • Animal farm • Board games • Children's videos/DVDs • Ideal for Babies & Toddlers • Ideal for Kids • Ideal for Teens • Pets on Request • Hot Tub • Walk to Restaurant • Satellite TV • Working Fireplace/Woodburner • Heating • High Chair(s) • Outstanding Landscapes • Outdoor Pursuit & Activities • Tourist Towns & Villages



# Interior & Grounds

## Ground Floor

- Open-plan living area with corner sofa, TV and wood burner
- Kitchen with American-style fridge freezer, oven, induction hob, microwave, dishwasher, TV, coffee machine and access to terrace
- Cloakroom
- Shoes cupboard
- Studio with desk and sofa

## First Floor

- Small bedroom with double bed and TV
- Bathroom with shower and free-standing bath
- Bathroom with bathtub
- Spacious master bedroom with TV and en-suite bathroom
- Bedroom with 2 x bunk beds (sleeping 4 children)

## Second floor (under eaves)

- Bedroom with double bed
- Family bathroom with walk-in shower and free-standing bathtub

## Exterior Grounds

- Terrace
- Dining facilities for 8
- Hot tub (additional charge in T&Cs tab)
- Egg barbecue
- Pizza oven

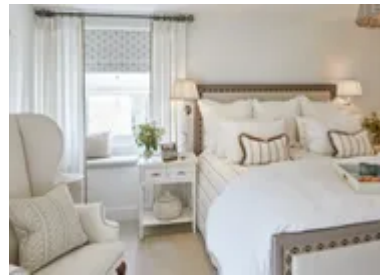
## Exterior Building

- Washing machine
- Tumble dryer
- Shower

## Additional Facilities

- Wi-Fi
- Selection of board games & books
- Cot & highchair
- Washing machine & dryer
- Iron & ironing board
- Parking for 2 cars (additional paid for parking can be found near-by)

*\*Please kindly note that total maximum capacity is 6 adults and 4 children. Additionally, there is room for up to 2 cars to park at the property.\**



# Location & Local Information

Beach Bay Cottage holds a fantastic location in the village of Croyde, perfect for those wanting to explore the wonderful North Devon region. The cottage allows guests to have easy access to a range of helpful amenities, including shops, restaurants and pubs.

For beach bums or keen surfers, North Devon has a beautiful coastline with a selection of award-winning beaches, with golden sand and clear water to choose from. Woolacombe is arguably one of the most popular, a family favourite which is ideal for surfers and is just a 15-minute car journey from Beach Bay Cottage. Closer to the cottage, Croyde and Saunton Sands are both excellent for swimming while Croyde Bay, has been rated one of the best surfing beaches in the world and so is ideal for the more experienced surfers.

For those who prefer to stay on land, North Devon also makes an ideal location for both walking and cycling. For those on foot, there are remarkable coastal paths to enjoy, while Exmoor National Park is just 30 minutes from the Beach Bay Cottage and offers a variety of routes for both experienced walkers or those who simply prefer a short stroll. For cyclists, the Tarka Trail forms part of the Devon Coast to Coast Cycle Route and is one of the country's longest traffic free walking and cycling paths and offers riders excellent coastal views.

## Owner Activity Recommendations:

### *The Stores*

Local organic shop serving amazing coffee and cake.

### *Local Pubs*

isiting one of our local pubs all within walking distance from 20 seconds to 5 minutes The Thatch, The Manor, Billy Budds or a little further away The Manor House Inn.

<https://www.billybudds.co.uk/>

(<https://www.thethatchcroyde.co.uk/>><https://www.thethatchcroyde.co.uk/http://www.themanorcroyde.co.uk/> (<http://www.themanorcroyde.co.uk/>)

### *Local Beaches*

The beaches of Saunton, Putsbrough and Croyde with all the associated adventures such as surfing, sea kayaking, stand up paddle boarding, yoga <https://www.bayfitness.co.uk/yoga> (<https://www.bayfitness.co.uk/yoga>) on the beach, or simply relaxing and having a nice ice cream.

### *Neo Cinema, Woolacombe*

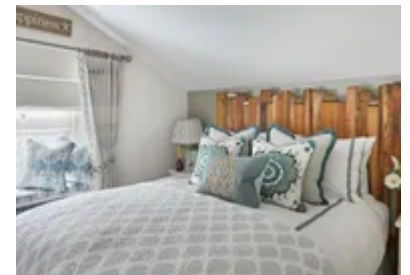
Plush cinema which offers visitors the ultimate private cinema experience. <https://www.woolacombe-bay-hotel.co.uk/cinema-in-woolacombe/now-showing> (<https://www.woolacombe-bay-hotel.co.uk/cinema-in-woolacombe/now-showing>)

### *Combe Martin Wildlife & Dinosaur Park*

Amazing collection of animals to see. <https://cmwdp.co.uk/> (<https://cmwdp.co.uk/>)

### *Baggy Point*

Stunning coastal views and great walks!





#### *Tarka Trail*

Great family day out for cycling on closed roads (following old unused rail lines for miles!)

<https://www.tarkatrail.org.uk/> (<https://www.tarkatrail.org.uk/>)

#### *Saunton Sands Golf Club*

36 holes of beautiful Championship links golf, set in the heart of North Devon.

<https://www.sauntongolf.co.uk/> (<https://www.sauntongolf.co.uk/>)

## Local Amenities

Nearest Airport	<b>Exeter Airport</b> (101 km)
Nearest Bar/Pub	<b>The Manor House Inn</b> (10 m)
Nearest Beach	<b>Croyde Beach</b> (1.5 km)
Nearest Ferry Port	<b>Ilfracombe Harbour</b> (13.9 km)
Nearest Golf	<b>Saunton Golf Club</b> (4.7 km)
Nearest Supermarket	<b>Tesco Superstore</b> (9.3 km)
Nearest Tennis	<b>Devonshire Tennis Academy</b> (8.8 km)
Nearest Town/City	<b>Barnstaple</b> (14.8 km)
Nearest Train Station	<b>Barnstaple</b> (14.8 km)
Nearest Village	<b>Croyde</b> (400 m)

## What we love

- An ideal location for an old fashioned seaside holiday! Located in Croyde a popular village renowned for its stunning white sandy beach and perfect waves for a surfing
- There is no danger of getting thirsty here with 3 pubs all located within the village!
- The cottage is ideal for those who are looking for an action-packed trip, with plenty of opportunity for guests to enjoy water sports, cycling and walking in the area!

## What you should know...

- The accommodation is set over four levels which may not be ideal for those with mobility issues
- Please note that no more than six adults can be accommodated at Beach Bay Cottage. The bedroom which makes use of two bunk beds is only suited to sleep up to four children.
- There is only room for up to two cars to park at the property.

# Terms & Conditions

- **Security deposit:** £1000. Paid directly to the owners 2 weeks prior to arrival. Cashed then reissued no later than 3 weeks after departure subject to a damage inspection.
- **Arrival time:** 5pm
- **Departure time:** 10am
- **Energy costs included?:** Yes, included in the rental price
- **Linen & towels included?:** Yes, included in the rental price
- **Pets welcome?:** Two small or medium well-behaved dogs allowed on request at the time of booking. Please state the breed on the request. Should this be accepted, an additional fee of £75 per dog will need to be paid directly to the owner. Dogs are STRICTLY not allowed on furniture.
- **Other Ts and Cs:** The hot tub is available on request, subject to an additional £150 fee.
- **Changeover day:** Flexible.
- **End of stay cleaning available?:** Yes. However, guests are required to leave the accommodation clean, tidy and in the same condition as on their arrival. Any extra cleaning, laundry, maintenance and/or rubbish disposal required will be charged against the security deposit.
- **Smoking Allowed?:** No smoking
- **Minimum stay:** Please note that there is a 3-night minimum stay, this may be increased across peak dates
- **Heating costs included?:** Yes, included in the rental price
- **Internet access?:** Yes, Wi-Fi included in the rental price

*\*Please kindly note that total maximum capacity is 6 adults and 4 children\**