

Cotswold Manor Estate

Region: The South West Sleeps: 32

Overview

This quintessential English country Estate near Stow-on-the-Wold is the perfect setting for large family gatherings and celebrations in a idyllic countryside. The estate has been lovingly resorted and offers all the services of a boutique hotel.

Cotswold Manor Estate stretches over 14.5 acres and can sleep up to a maximum of thirty-two guests across its fifteen beautifully-appointed bedrooms. The Estate consists of four individual properties including The Manor House, Barn, Granary, Cow Byre and Peacock Shed. All of which are surrounded by the exquisite award-winning gardens.

The 5-bedroom Manor house has been privately owned since the 15th century and is steeped in English history. It has been beautifully refurbished and is now available as an exclusive home to rent for those seeking a discrete retreat away from the hassle of city living. For relaxation in an atmosphere of tranquillity and charm in a classic Cotswold village, this estate is a wonderful place to stay, be it to spend time with friends and family, entertain clients, or arrange team building for corporate groups.

The luxuriously converted Cotswold Barn contains five themed suites, from the elegant gold room, to the exotic African room. The cookery lessons also take place in the barn, where clients can enjoy a selection of set seasonal courses. The Granary can comfortably accommodate six guests across its three en-suite bedrooms. The remaining four guests can make use of the Cow Byre and Peacock Shed, both having just one bedroom they make romantic boltholes for any couples in search of a little extra privacy from the rest of the group.

The outside space is equally impressive, Cotswold Manor and Barn both boast their own hot tubs, while the Manor benefits from its very own astro tennis court, the ideal spot for some healthy competition! Cotswold Barn benefits from a swimming pool, brand new for 2020! There is plenty of opportunity for al fresco dining with multiple terraces and Weber barbecues.



Facilities

- Wi-Fi/Internet
- Special Offer
- Has Discount
- Weddings
- Wow Factor
- Easy By Train
- Watersports
- Walk to Village
- Cots (Cribs)
- DVD
- Golf Nearby
- Air-Con
- Manor
- Instagrammable
- Chapel on Site
- Heritage Collection
- Country Estate
- Wellness
- Recommended
- Private Pool
- Ideal for Babies & Toddlers
- Ideal for Kids
- Ideal for Teens
- Hot Tub
- Walk to Restaurant
- Electric Car Charger
- Stag/Hen Allowed
- Tennis Court
- Ground Floor Bed & Bath
- TV
- Working Fireplace/Woodburner

Interior & Grounds

The Estate consists of the stunning five-bedroom 15th century Manor House, a luxuriously converted five-bedroom barn, a three-bedroom Granary and two idyllic one-bedroom hideaways perfect for party overflows. The self-contained Cow Byre and the Grade I listed Peacock Shed.

Manor | 5 bedrooms

Ground Floor:

- Formal lounge with open fire
- Sitting room with log burner
- Snug with TV
- Secret cinema room with surround sound
- Dining room/ Hallway with seating for 12
- Formal dining room with seating for up to 34
- Fully-equipped kitchen with Miele appliances

First Floor:

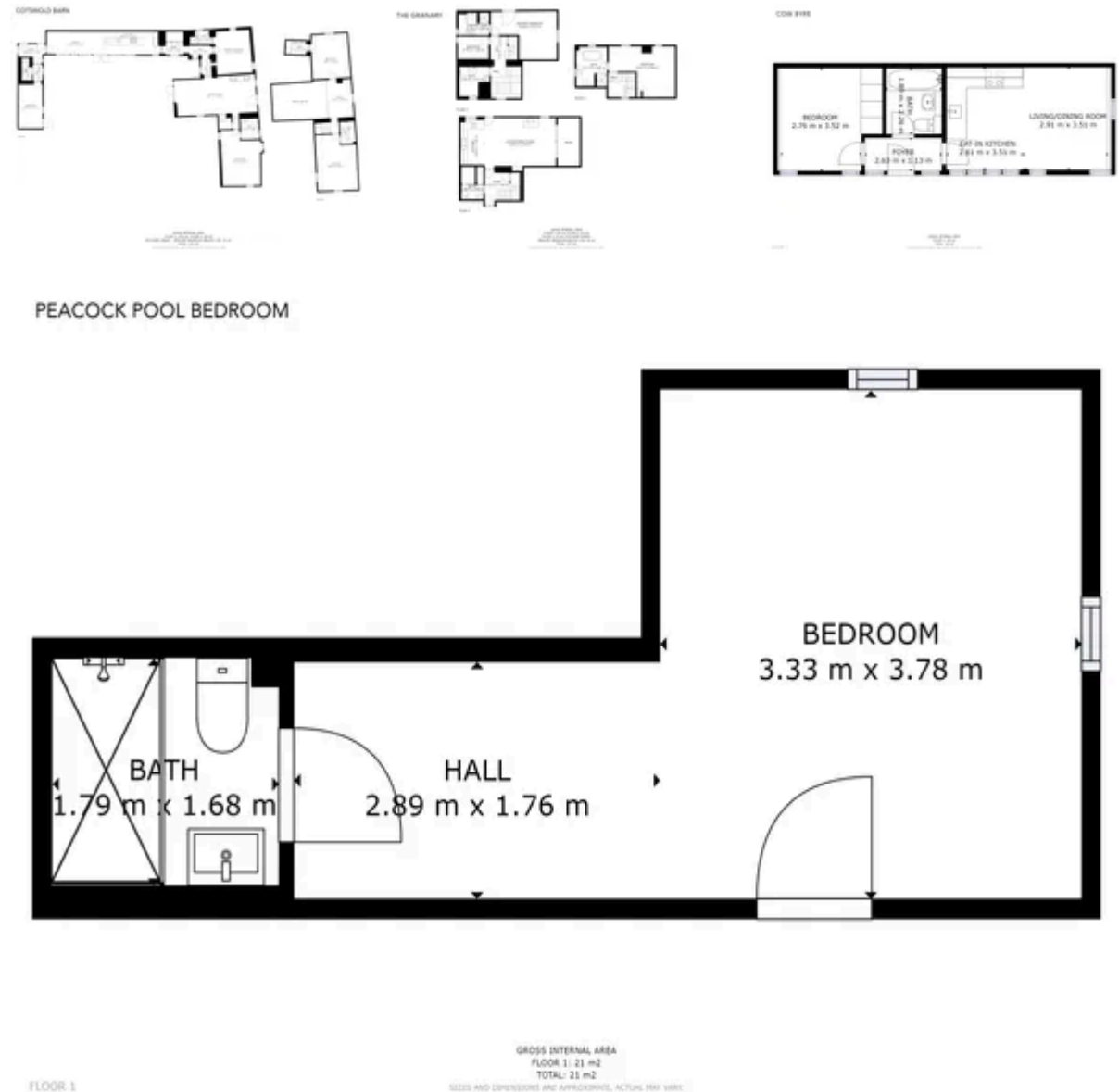
- Master bedroom with super-king bed and en-suite bathroom (*can be set up with twin beds on request*)
- Bedroom with four-poster bed and en-suite bathroom
- Bedroom with super-king bed and en-suite bathroom (*can be set up with twin beds on request*)

Second Floor/ Attic:

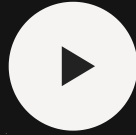
- Bedroom with super-king bed (*can be set up with twin beds on request*)
- Bedroom with super-king bed (*can be set up with twin beds on request*) and a snug area with two single beds ideal for small children
- Family bathroom with roll-top bath and walk-in shower

Exterior Grounds:

- Astro tennis court
- Hidden hot tub
- Terrace
- Dining facilities
- Weber charcoal barbecue
- Selection of garden games
- Shared woodland playground (*new for 2021!*)
- Private Lake with rowing boats, SUP boards, jetty with steps for natural swimming (*open from mid-March 2022!*)



Cotswold Manor



POWERED BY
 Matterport®

Barn | 5 bedrooms

Ground Floor:

- Living room with TV
- Fully-equipped kitchen with dining facilities for 14
- Cloakroom
- Bedroom with super-king bed and en-suite shower room
- Bedroom with super-king bed and en-suite shower room (*can be set up with twin beds on request*)
- Bedroom with super-king bed and en-suite bathroom (*can be set up with twin beds on request*)

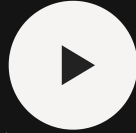
First Floor:

- Bedroom with super-king bed and en-suite bathroom (*can be set up with twin beds on request*)
- Bedroom with super-king bed and en-suite bathroom (*can be set up with twin beds on request*)

Exterior Grounds:

- Swimming pool (*brand new for June 2020!!*)
- Hot tub
- Terrace
- Dining facilities

Cotswold Barn



POWERED BY
 **Matterport**®

Granary | 3 bedrooms

Ground Floor:

- Open-plan living area with TV
- Fully-equipped kitchen with dining facilities for 6
- Cloakroom

First Floor:

- Bedroom with super-king bed and en-suite bathroom (*can be set up with twin beds on request*)
- Bedroom with double bed and en-suite shower room

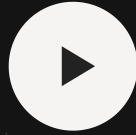
Second Floor:

- Bedroom with super-king bed and en-suite bathroom (*can be set up with twin beds on request*)

Exterior Grounds:

- Small cobbled patio garden with seating

The Granary



POWERED BY
 **Matterport**

Cow Byre | 1 bedroom

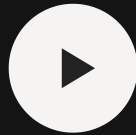
Ground Floor:

- Open-plan living and kitchen area
- Master Bedroom with a double bed with walk in shower room

Exterior Grounds:

- Small garden with barbecue and seating

Cow Byre



POWERED BY
 **Matterport**

Peacock Shed | 1 bedroom

Ground Floor:

- Open-plan living area with corner kitchenette
- Master Bedroom with a double bed with walk in shower room

Exterior Grounds:

- Vegetable garden with shepherds hut

Peacock Pool Bedroom



POWERED BY
 **Matterport**

Additional Facilities

- Wi-Fi
- Sky TV
- Board games available
- Travel cots & highchairs available on request
- Washing machines & dryers in the Manor, Barn & Granary
- Plenty of parking
- Electrical car charging points at the Manor & the Barn

** The swimming pool is heated and open between the 1st of May and the 31st of October (weather dependent) and is only available either when the Estate is rented exclusively or with rentals of Cotswold Barn.*

Location & Local Information

The Cotswolds are considered by many to be among the most beautiful areas of England. The warm richness of the soft natural limestone buildings and the wealth of the wool trade, has left a heritage of superb buildings. The area is now an attraction for anyone who loves peace and tranquillity, no matter what the season.

Areas of interest

Cotswolds Way

Wonderful walks around the Cotswolds often taking in some delightful public houses along the way – some serving their own locally brewed real ale.

Broadway

A very fine example of a Cotswold town with gift shops and tea shops where you can browse away a few hours (or visit the Lygon Arms for the best in afternoon teas).

Daylesford

For a unique country experience, browse around the many delights, which includes a fabulous garden and household accessories, beautiful clothing, and a really wonderful delicatessen where you can finish off with a brunch, lunch, afternoon tea etc.

Burford

A stunning hillside town with hostelrys, tea shops, and antique shops. Of all the towns located on the River Windrush, this must be the most famous and is a must see.

Bourton-on-the Water/ Bourton-on-the-hill, Bibury and Upper/Lower Slaughter

All lovely Cotswold towns and villages and well worth a visit.

Stow-on-the-Wold

Another very close Cotswold Town that has many Antique shops, Art Galleries and craft shops (and of course tea shops!)

Cheltenham

For the racecourse, lovely Georgian/Regency architecture, smart shops and many places of cultural interest to visit.

Statford-Upon-Avon

Birthplace of Shakespeare. A very historic town full of Tudor / Elizabethan architecture and lovely walks along the River Avon.

Oxford

Universities, dreaming spires, museums, deer parks, botanical gardens, beautiful walks along the Isis and Thames.

Blenheim Palace

A fine stately home with gardens and the birthplace of Sir Winston Churchill. Also worth a visit is nearby Woodstock and Bladon where Sir Winston was buried.



Local Amenities

Nearest Golf	Naunton Downs Estate (6.43 km)
--------------	-----------------------------------

What we love

- With a tennis court, swimming pool and two hot tubs - there is plenty to enjoy without even leaving the Estate!
- Wonderful position within the Cotswolds, ideal for those looking to explore this magnificent region
- With room for up to 32 guests, the Estate makes the perfect setting for a family reunion or special occasion
- Those in smaller groups can choose to simply rent either Cotswold Manor (<https://www.oliverstravels.com/britain-ireland/cotswolds/cotswold-manor/>) or Cotswold Barn (<https://www.oliverstravels.com/britain-ireland/cotswolds/cotswold-barn/>) individually

What you should know...

- The accommodation is spread across four individual properties which may not suit all group types
- One of the bedrooms in the Manor is better suited to be used as a family suite for those travelling with smaller children due to the layout

Terms & Conditions

- **Security deposit:** £3000. This is paid prior to arrival and will be refunded in full after departure subject to damage inspection.
- **Arrival time:** 4pm
- **Departure time:** 11am
- **Energy costs included?:** Yes, included in the rental price
- **Linen & towels included?:** Yes, included in the rental price
- **Pets welcome?:** No dogs
- **Other Ts and Cs:** The swimming pool is heated and open between the 1st of May and the 31st of October (weather dependent) and is only available either when the Estate is rented exclusively or with rentals of the Cotswold Barn.
- **Changeover day:** Friday
- **End of stay cleaning available?:** Yes, included in the rental price. Please leave the Estate tidy and in the condition you found it.
- **Smoking Allowed?:** No smoking
- **Other 2:** Please be aware that the owners do not allow any external caterers that are not on their own approved list at the property.
- **Other 3:** The Estate is situated in a rural setting however noise does travel. In the evenings, please bear this in mind and be respectful of any neighbours.
- **Minimum stay:** Please note that there is a 2-night minimum stay, this may be increased to 7-nights across peak dates
- **Internet access?:** Yes, Wi-Fi is included in the rental price