

Chateau De L'Empereur

Region: Normandy **Sleeps:** 40

Overview

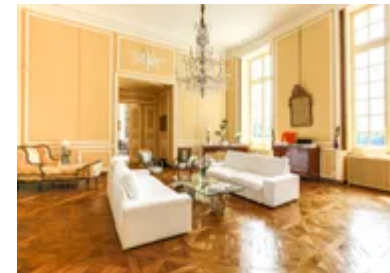
To stay in the historic Château de L'Empereur will be an unforgettable experience. Set in 125 acres of glorious parkland, guests will not only stay in a sensitively renovated 17th-century château but also experience the 5* hospitality of its outstanding hosts.

The château has a fascinating history: Emperor Joseph II, the brother of Marie-Antoinette, stayed there in the late 18th century and it also played a vital role as a hospital for the wounded in World War II. In more recent years it has been beautifully restored to its former glory with 16 classically styled bedrooms, each with their own impressive bathroom plus two exquisite drawing rooms, a romantic dining room and a welcoming chef's kitchen-diner.

Despite the rich historical ambience, splendid 21st-century features include an indoor swimming pool, perfect for winter days by the pool's roaring fire, a large Jacuzzi, a sauna, a space perfect for yoga and massage as well as an impressive home theatre where guests can watch the big screen or play on the PS4 console under a vaulted ceiling. In the summer months you can spend leisurely days by the outdoor swimming pool with glorious views of the surrounding parkland.

The exceptional hosts have a wealth of experience in providing high-end service in superb settings and here is no different. Daily maid service of the common areas is included and the hosts are discrete and ready to provide you with any help you may need.

Their aim is to provide guests with authentic luxury experiences whether it is hiring a Michelin-starred chef to prepare a meal as you watch in the open kitchen-diner, arrange for a hot-air balloon to whisk you away from the



château's grounds or organise extra maid service and butlers to serve each of the 16 bedrooms.

The glorious grounds offer 125 acres of parkland filled with lawns, woods, ponds, streams and wildlife such as birds, rabbits and wild deer roaming free. Go for long walks as the children explore their surroundings, find a quiet place to sit in the shade of the ancient trees or listen to the trickle of the fountain and stream.

It will be hard to leave this paradise, yet there is so much of Normandy to explore such as historical Bayeux within half an hour, the old University city of Caen, the pretty seaside towns of Deauville and Honfleur and the stunning granite island of Mont St Michel. Not to mention the wonderful wide sandy beaches along the north coast, including many of the D-Day landing beaches within an hour's drive.

There is of course hiking, cycling and horse-riding opportunities across the region as well as brilliant golf courses and an array of water-sports along the coast.

That said, whether it's a celebration, a unique wedding or a special holiday with loved ones, it will be hard to leave the historical surroundings, contemporary features and the warm hospitality of the remarkable Château de L'Empereur.

Facilities

Fishing • Ideal for Parties • Ideal for Kids • Private Pool • Romantic • Walk to Village • Stag/Hen Allowed • Wine Tasting • Walking/Hiking Paths • Horse Riding • Historical Sites • Golf Nearby • Tennis Nearby • Cycling • Chateaux & Castles • Wellness • Weddings • Maid Service Included • Ideal for Teens • Dry Hire Option • Marquee Hire Permitted • Licensed for Marriage • Cots (Cribs) • Chef/Cook Available • Outdoor Ceremony • Indoor Pool • All Bedrooms En-Suite • Flexible Catering Options • <1hr to Airport • Heritage Collection • Allow Ceremonial Fire • Walk to Restaurant • Pool Safety Feature • Wi-Fi/Internet • Allow External Caterers • Allow Fireworks • Rural Location • No Corkage • Decorated for Christmas • No Curfew • Indoor Reception Available • Outstanding Landscapes • Nearby Church/Chapel • Outdoor Pursuit & Activities • Tourist Towns & Villages • Spa/Massage • Table Tennis • Lift • Games Room • Indoor Games • Gym/Fitness Room • Hot Tub • Satellite TV • Sauna/Steam • Home Cinema • Heating • Catering Available • Breakfast Available • On-Site Concierge • Butler Available • Xbox/Playstation/Wii • Ideal for Babies & Toddlers • Booster seat • High Chair(s)

Interior & Grounds

Château Interior (2000m2)

Ground Floor

- Open-plan kitchen-diner (50m2)
- Indoor swimming pool (10x3m, depth 1.5m) with concurrent swimming device
- Screening room (40 capacity) featuring 7.1 surround system, PS4 games console and satellite TV
- Games room
- Indoor marble Jacuzzi (15 capacity)
- Sauna

First Floor

- Drawing room (70m2)
- Drawing room (55m2)
- Dining room (65m2)
- Small kitchen
- Office
- Room One: Suite with twin/double bed (200x200cm) and ensuite bathroom with bath and walk-in shower

Second Floor

- Room Two: Suite with twin/double bed (200x200cm) and ensuite bathroom with bath and walk-in shower
- Room Three: Suite with 2 x twin/double beds (200x200cm each) and ensuite bathroom with bath and walk-in shower. Sleeps up to 4 guests
- Room Four: Suite with twin/double bed (200x200cm), single bed and ensuite bathroom with bath and walk-in shower. Sleeps up to 3 guests
- Room Five: Double room with twin/double bed (200x200cm) and ensuite shower room
- Room Six: Double room with twin/double bed (200x200cm) and ensuite shower room
- Room Seven: Double room with twin/double bed (200x200cm) and ensuite bathroom with bath and walk-in shower
- Room Eight: Double room with twin/double bed



- (200x200cm) and ensuite shower room
- Room Nine: Double room with twin/double bed (200x200cm) and ensuite bathroom with bath and walk-in shower. Room for a cot. Adjoined with room ten.
- Room Ten: Double room with twin/double bed (180x190cm) and ensuite shower room. Room for a cot. Adjoined with room nine.

Mezzanine Floor

- Room Eleven: Double room with double bed (140x190cm) and ensuite bathroom
- Room Twelve: Double room with double bed (180x190cm) and room for a cot. Private bathroom next door

Third Floor

- Room Thirteen: Quad room with 2 x twin/double beds (200x200cm each) and ensuite bathroom with bath and walk-in shower. Sleeps up to 4 guests
- Room Fourteen: Mezzanine room with double bed, 3 x single beds and ensuite bathroom with bath and walk-in shower. Sleeps up to 5 guests plus room for a cot
- Room Fifteen: Cosy suite with main room and children's room with twin beds. Ensuite bathroom with shower
- Room Sixteen: Double room with ensuite bathroom with shower

Outside Grounds

- Outdoor swimming pool (20x4m, 1.5m deep). Rolling safety shutter. Open 1st May to end of September
- BBQ
- Fountain
- 125 acre parkland featuring woods, ponds and wildlife
- Farm/outbuildings

Facilities

- Wi-Fi
- Heating
- Lift
- Screening / home cinema room

- PS4 game console
- Satellite TV
- Indoor marble Jacuzzi
- Indoor and outdoor swimming pool
- Gym/yoga room
- Table-tennis
- Sauna

Location & Local Information

Château de L'Empereur is located in 125 acres of beautiful parkland featuring woods, fields, ponds and wildlife such as rabbits, deer and birds.

It's less than 1km to the local village where you will find a bakery, a couple of restaurants and other shops including two supermarkets on the outskirts, close to the château. The village has an interesting history relating to World War Two and is included in some of the Battle of Normandy tour guides of the region.

This is a fantastic location for exploring the nearby sights of Normandy. It is an especially great base for exploring the D-Day Landing beaches which are just a short drive away. Arromanches (36km) and Omaha (47km) are examples of two beaches of historical importance as well as the batteries and cliffs of Longues-sur-Mer (35km) just north of Bayeux.

The historic town of Bayeux (27km) is well known for the UNESCO classified Bayeux Tapestry, depicting the Norman's conquest of England. It is a beautiful town with many renowned restaurants, historical buildings and interesting museums about this fascinating part of Normandy.

Heading north some of Normandy's prettiest towns are along the coastline such as the elegant seaside resort of Deauville (68km) and Honfleur (83km), one of Normandy's most picturesque spots, making the perfect coastal day trip.

Along the coast you'll also find numerous long wide sandy beaches within half an hour or head to the rugged cliffs a little further away. Sand yachting is very popular on the coast with centres in Asnelles (35km) plus there are other watersports such as kayaking, diving, sailing and stand-up paddling nearby.

Golf-lovers can enjoy a number of stunning Norman golf courses across this region, including Omaha Beach Golf



(36km) whilst there are some beautiful walks plus cycling trails to follow. Horse-riding is a popular pursuit in the region with the particularly well-regarded Pole International Du Cheval within an hours drive.

Of course, Normandy is the home of timeless villages, idyllic châteaux and amazing regional cuisine. Drive east to the archetypal Norman village of Beuvron-en-Auge with its half-timbered houses and an award winning typical restaurant, combined with a visit to Château de Crèvecœur and museum (56km). Other worthy châteaux in the region include Balleroy Castle (23km) and Château Vendeuvre (52km), classed as one of France's historic monuments.

Be sure to visit one of the fine Calvados cellars and learn how the drink is made and combine with a farm that offers regional dairy products to sample; private tours can be arranged.

Local Amenities

Nearest Airport	Caen-Carpiquet/Paris Charles-de-Gaulle (25km/285km)
Nearest Beach	Arromanches-les-Bains (36km)
Nearest Ferry Port	Caen-Ouistreham (45km)
Nearest Golf	Omaha Beach Golf (36km)
Nearest Restaurant	In the village (1.3km - 20 min walk)
Nearest Supermarket	In local village (800m)
Nearest Town/City	Bayeux/Caen (27km/30km)
Nearest Train Station	Gare de Bayeux/Gare de Caen (26km/30km)
Nearest Village	(500m)

What we love

- We love the concept of staying in beautiful historical surroundings with the amazing 21st-century facilities and the very best 5* level of service - it's also a spectacular wedding and events venue
- The 125 acres of parkland features a private swimming pool, gardens, woods, ponds and deer roaming free
- The château also has an indoor swimming pool, home theatre, yoga space, large hot tub, saunas and a spa
- Bayeux and the D-Day Landing Beaches are within a short drive of the château

What you should know...

- The vast and glorious grounds feature ponds, paths, streams, old farm buildings, woods and lawns – lovely for supervised children (and adults!) to explore
- Car hire is essential to be able to make the most of this fascinating region
- Please note that any extra services arranged by the hosts are not included and will incur an additional cost. Included maid service is for the common areas only.

Terms & Conditions

- **Security deposit:** €7000 paid to the owner by bank transfer one month before arrival and refunded two weeks after departure, subject to full inspection.
- **Arrival time:** 5.00 p.m.
- **Departure time:** 11.00 a.m.
- **Energy costs included?:** Yes.
- **Linen & towels included?:** Yes, towels changed every four nights.
- **Pets welcome?:** Not allowed.
- **Other Ts and Cs:** Weddings, stag/hen parties and any special events are on request only and subject to prior arrangement with the owner and additional charges. A supplement will apply in the event of guests in addition to those staying at the château.
- **Changeover day:** Flexible.
- **End of stay cleaning available?:** Yes and daily maid service included. However, guests are required to leave the accommodation clean, tidy and in the same condition as on their arrival. Any extra cleaning, laundry, maintenance and/or garbage disposal required will be charged against the security deposit.
- **Smoking Allowed?:** No.
- **Minimum stay:** 4 nights during D Day celebration (beginning of June), 2 nights during all other periods.
- **Heating costs included?:** Yes.
- **Tax:** French Visitors Tax payable locally (typically costs €1-€3 per adult per night- please enquire if exact amount is required).
- **Pool towels included?:** Yes.
- **Pool opening dates?:** The outdoor swimming pool is open approximately May to end-September.