

# Pine Cliffs Resort - 3 Bedroom Garden Suite

**Region:** Pine Cliffs Resort **Sleeps:** 7

## Overview

Pine Cliffs Gardens are the most recent luxury apartments from Pine Cliffs Resort (<https://www.oliverstravels.com/portugal/algarve/pine-cliffs-resort/>). These units are ideal for family holidays, located at the entrance of the resort, surrounded by imposing gardens and a majestic pine tree scenario, with access to all the resort's facilities and restaurants.

Luxury meets nature! The architecture and design of this final phase of the resort's development remain faithful to the Pine Cliffs Resort aesthetic and design with the contemporary seamlessly fusing with the traditional to create beautifully appointed, luxurious units that radiate relaxed, stylish and indulgent Algarvian living.

87 luxury one, two and three bedroom apartment suites with fully equipped kitchens. Located in one of the most desirable locations in the resort, surrounded by imposing gardens and majestic pine trees.



## Facilities

Ideal for Kids • Resort • Beach Club Available • Kids Club Available • Excursions Available • 24hr Reception • Onsite Restaurants • Golf Villa • Tennis Nearby • Wine Tasting • Recommended • Air-Con • Maid Service Included • Special Offer • Has Discount • Ideal for Teens • Cots (Cribs) • Walk to Beach • Beach Nearby • Instagrammable • Modern • Shared Pool • <1hr to Airport • Walk to Restaurant • Wi-Fi/Internet • Outstanding Landscapes • Hairdryer • Outdoor Pursuit & Activities • Tourist Towns & Villages • TV • Safety Deposit Box • Satellite TV • Heating • Cooking Classes Available • Yoga Classes Available • Spa Treatments Available • Transfers Available • Breakfast Available • On-Site Concierge • Professional nanny babysitter available • Meal delivery service • Ideal for Babies & Toddlers

# Interior & Grounds

## The Suite

Pine Cliffs Gardens are the most recent luxury apartments at Pine Cliffs Resort. These units are ideal for family holidays, located at the entrance of the resort, surrounded by imposing gardens and a majestic pine tree scenario, with access to all the resort's facilities and restaurants.

### Interiors

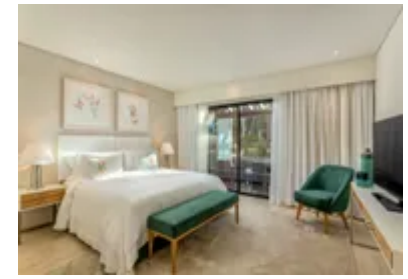
- Spacious and elegant living room with sofa bed and access to the garden
- Fully equipped kitchen and dining area
- Laundry room with washing machine
- Master bedroom with queen-size bed and en-suite bathroom with hairdryer, magnifying mirror, bathtub and shower
- Bedroom with queen size bed and en-suite shower room
- Bedroom with two single beds
- Shower room

### Exteriors

- Terrace or patio with outdoor seating

### Additional Facilities

- Air conditioning
- Wi-Fi connection
- Washing machine
- Bathrobes and slippers
- Hairdryer
- One cot available upon request
- 24 hours room service;
- Daily housekeeping service
- Access to all Pine Cliffs Resort facilities and services



## Location & Local Information

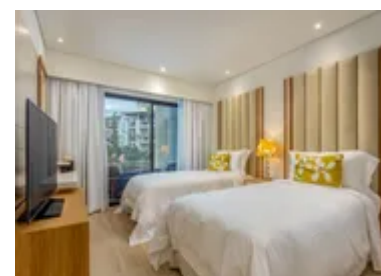
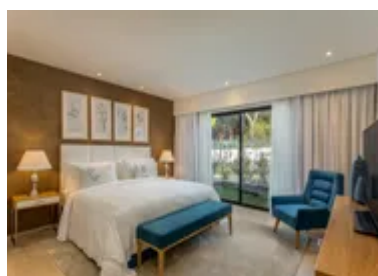
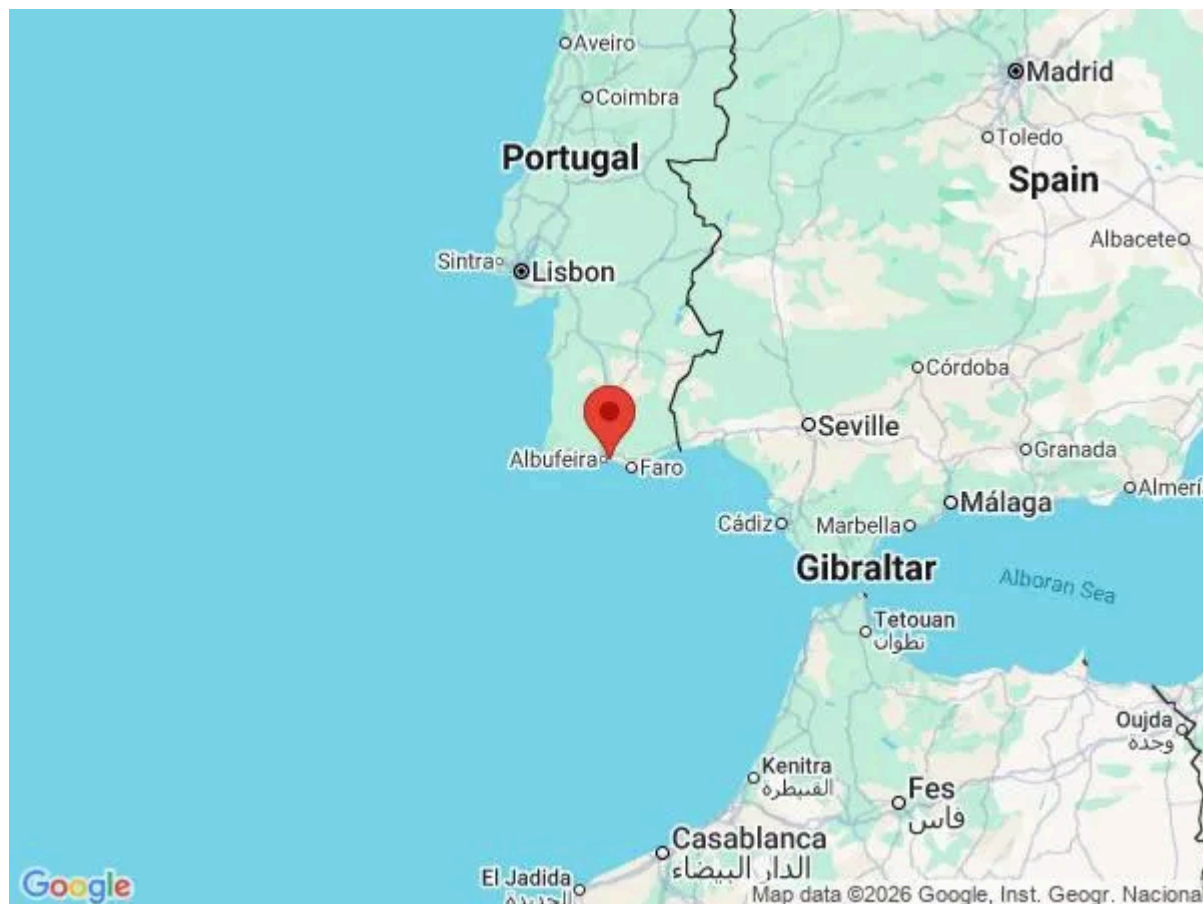
The Gardens are within walking distance of the Pine Cliffs hotel and all of the facilities that can be found there, as well as the beach. The golf clubhouse and driving range, the tennis courts and kids' club can be found within a slightly longer walk. The swimming pool that the Terraces share is easily found, walking from the the garden of each property.

Pine Cliffs is located in the small town of Olhos d'Agua. There are a multitude of restaurants on resort, plus a handful directly opposite the resort entrance and more to be found within a ten minute drive. Olhos d'Agua is a pretty coastal town with a small sandy beach and various restaurants offering freshly caught fish and international cuisine. Bars are open until late here and are always buzzing.

Pine Cliffs is situated almost half way between the larger towns of Vilamoura and Albufeira, both of which can be found within a 20 minute drive and offer a full selection of family orientated restaurants, shops, beaches and facilities.

## Local Amenities

Nearest Airport	<b>Faro Airport (36 km)</b>
Nearest Village	<b>Olhos d'Agua (3 km)</b>
Nearest Town/City	<b>Albufeira (10 km)</b>
Nearest Restaurant	<b>11 Restaurants and Bars in Resort (Walking Distance)</b>
Nearest Beach	<b>Praia da Falesia (1 km)</b>
Nearest Golf	<b>Pine Cliffs Golf Course (1 km)</b>
Nearest Tennis	<b>Academia de Ténis Annabel Croft (1 km)</b>
Nearest Supermarket	<b>Intermarche (1 km)</b>



## What we love

- Pine Cliffs Gardens are ideal for family holidays, located at the entrance of the resort, surrounded by imposing gardens and a majestic pine tree scenario, with access to all the resort's facilities and restaurants
- True to the Pine Cliffs Resort aesthetic and design with the contemporary seamlessly fusing with the traditional to create beautifully appointed, luxurious units that radiate relaxed, stylish and indulgent Algarvian living
- Located in one of the most desirable locations in the resort, surrounded by imposing gardens and majestic pine trees

## What you should know...

- Although everything you need is within the resort, car hire is recommended if you wish to explore more of the area
- All restaurants and facilities within Pine Cliffs Resort can be reserved/booked through the Pine Cliff Resort app using your room number

# Terms & Conditions

- **Security deposit:** €100 per person charged to client's credit card by the owner upon arrival and refunded two weeks after departure, subject to full inspection.

- **Arrival time:** 4 pm

- **Departure time:** 10 am

- **Energy costs included?:** Yes, included in the rental price.

- **Linen & towels included?:** Yes, included in rental price.

- **Pets welcome?:** Not allowed.

- **Other Ts and Cs:** The sofa bed is available upon request and is suitable for one adult or two children up to 12 years old.<br> Various points of electric car charging available. Please note that Pine Cliff Resorts classifies children to be between 4 - 12 years old. Children older than 12 will pay as an adult. The Facility Fee is mandatory and will be charged as follows, per accommodation per night: <br> <br> •Pine Cliffs Hotel: 15.00 EUR <br> •Pine Cliffs Residence, Ocean Suites, Suites, Gardens, Deluxe Townhouses and Terraces: 20.00 EUR <br> •Pine Cliffs Villas – 25.00 EUR <br> <br> This is not included in the contracted room rates and is settled directly by the guests at check-out. <br>

- **Changeover day:** Flexible.

- **End of stay cleaning:** Standard changeover clean included in the price. Guests are required to leave the accommodation clean, tidy and in the same condition as on their arrival. Any extra cleaning, laundry, maintenance and/or rubbish disposal required will be charged against the security deposit.

- **Smoking Allowed?:** Smoking & Vaping are not permitted.

- **Minimum stay:** 3 nights. All other durations on request.

- **Heating costs included?:** Yes, included in the rental price.

- **Pool heating charge?:** Not available on this property.

- **Tax:** To be paid locally at check-in €2 per guest per night and applicable to all guests 13 years old and older for up to a maximum of 7 consecutive nights per person, per stay. The tourist tax will be charged only for stays from April 01st to October 30th of each year. The tax is not applicable from November 01st to March 31st.

- **Internet access?:** Wi-Fi internet access included.

- **Pool towels included?:** Yes, included in rental price.