

Chevaliers Gatehouse

Region: Heart Of England **Sleeps:** 4

Overview

Chevaliers Gatehouse, a luxury holiday home in Shropshire, combines the glories of the past with the comforts of the present. The Gatehouse is a Grade I 'Elizabethan gem' (as described by Sir Simon Jenkins in the Best Houses of England) and boasts four poster and half-tester beds with roll top baths and luxurious Lefroy Brooks bathrooms. This gem is located within a secluded hamlet near Bridgnorth and Much Wenlock and includes a courtyard and private garden. Enjoy the beautiful flower beds, fruit trees and a bubbling fountain on a quiet morning, or explore the region's historic sites, scenic walks and gastro hotspots.



With the perfect combination of romantic history and modern comforts, The Gatehouse comfortably sleeps four guests across two luxury suites on separate floors. To reflect its storied past, the expansive suites are named after Prime Minister Margaret Thatcher and Prince Rupert, two of the home's many illustrious visitors. Nephew to Charles I, Prince Rupert slept in the enormous second story bedroom while he commanded royalist troops during the Civil War. A set of linen tapestries in the gatehouse honours him. The Prince Rupert Suite, on the top floor, has a super-king four poster bed decorated with fabrics from Zoffany's award winning Arden collection by artisan neo-Elizabethan artist Melissa White. The spiral oak staircase is original. The Thatcher Suite, with a king-size half-tester bed, has its own sitting room with Tudor plasterwork, SKY TV and an open Tudor fire. While the two bedrooms will make you feel like royalty, the updated bathroom fittings, fully equipped modern kitchen and digital TV will keep you in contemporary comfort.

There is a fully fitted kitchen and hunting lodge style dining room decorated in murals. There is a beautiful trellis garden in the Elizabethan style with a fountain surrounded by apple trees.

Chevaliers Gatehouse makes the ideal family holiday rental being near the M5, M6, M40 and M54 motorways, as well as 15 miles from the Telford Central train station, and 40 miles from Birmingham International Airport.

**Please note that while Chevaliers Gatehouse is listed as sleeping up to 4 adults, we can also accommodate an additional child or teenager on a single bed in the second floor suite.*

Facilities

Walking/Hiking Paths • Romantic • Special Offer • Maid Service Available • Has Discount • Quirky (Unique) • Pets on Request • Chef/Cook Available • Instagrammable • Cottage • Heritage Collection • Wi-Fi/Internet • Country

Interior & Grounds

Chevaliers Gatehouse

Entrance

The property has its own imposing entrance gates, gravelled drive-way and parking. Wrought iron gates lead through to a medieval courtyard and sixteenth century cobbled archway.

Dining Room

The ground floor dining room has an original sixteenth century Tudor fireplace, carved North European refectory table that sits ten and a painted Tudor ceiling. The dining room is reminiscent of a romantic hunting lodge with hand-blocked wallpaper and tartan curtains with horn buttons.

Kitchen

The fully equipped kitchen has a period stone floor, American style fridge-freezer, granite work tops, butler sink which is ideal for either cooking oneself or by a local chef (which can be arranged) to prepare dinner or lunch in the adjacent dining room.

First Floor

The first floor comprises the panelled Thatcher Suite bedroom (This suite is named after the former British prime minister – and her husband Sir Denis – who spent two nights in the bedroom whilst staying at Chevaliers Gatehouse in 1994) with a half-tester bed with silk drapes. The bedroom has a nineteenth century crewel work tapestry, ornate plasterwork, Tudor fireplace, oak floor and antiques. The suite has an adjoining sitting room with hand blocked wallpaper, silk curtains, digital TV, Tudor fireplace, and spectacular plasterwork. The separate bathroom in one of the turrets has all Lefroy Brooks fittings including a powerful wet room shower, traditional claw foot towel rails and underfloor heating.

Second Floor

The enormous Prince Rupert Bedroom (named after Prince Rupert of the Rhine, cousin of Charles I who hid here during the civil war in 1646) on the top floor boasts a four poster super-king sized bed and single bed, huge exposed beams, oak bookcases, an enormous bath under the mullion windows in the bedroom, a large writing desk. The bedroom also has a separate turret bathroom with all fittings by Lefroy Brooks.

Exterior Grounds

- Private garden with flower beds, fruit trees and fountain
- Barbecue and outdoor furniture (*during summer months*)

**Please note that while Chevaliers Gatehouse is listed as sleeping up to 4 adults, we can also accommodate an additional child or teenager on a single bed in the second floor suite.*



Location & Local Information

Chevaliers Gatehouse is a secluded hamlet deep in the Shropshire countryside, but lies within four and a half miles of historic Bridgnorth and four miles of the pretty market town of Much Wenlock. Next to the Hall is the historic Norman church of St Michael with its 12th century wall paintings and famous 12th century font.

The Gatehouse is reached along a winding narrow country lane that ends at this historic estate. After visiting Chevaliers Gatehouse with the artist John Piper for Shropshire : A Shell Guide (published 1951), John Betjeman wrote that the hall was 'best approached by foot, horse or bicycle; only so can its peace and various landscape be appreciated'.

Chevaliers Gatehouse remains a haven of peace and rural beauty today – an ideal place to explore Shropshire and the Heart of England, from the gastronomic centre of Ludlow to the Ironbridge Gorge Museum, the Shropshire hills and many other historic houses and gardens, including the Dower House Gardens in nearby Morville of Dr Katherine Swift (author of the bestselling book *The Morville Hours*) and the world famous nursery gardens of David Austin Roses.

Bridgnorth, four miles away, is an attractive market town famous for its funicular railway and the many flights of steps which connect the High and Low Towns. Regular steam trains also run from here along the Severn Valley Railway. The town has many charming pubs and bistro restaurants, as well as high street shops, a supermarket and a cinema.

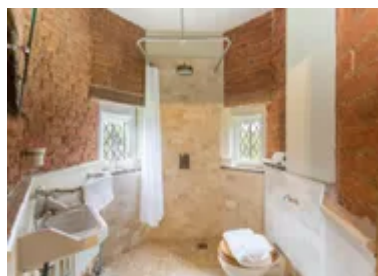
Much Wenlock, five miles away, has been voted the second most beautiful town in England. You can stroll around the ruins and grounds of the ancient Wenlock and Buildwas Abbeys (Wenlock Abbey was one of the most important in the 15th century), go antique shopping, visit the local Olympian museum, browse for second hand books (Wenlock Books won the coveted Independent Bookseller of the Year award in 2006) or go shopping at the artisan shops and galleries or the traditional butcher, Ryan's, that has won a national award for Best Butcher in Britain.

Half an hour's drive away to the south-west is historic Ludlow, one of the gastro capitals of England with award winning Michelin restaurants, secluded gastro-pubs, historic market square and famous castle ruins where the two 'Princes of the Tower' were brought up in the late 15th century. In April 1483, the eldest of the two princes is reported to have stayed at Chevaliers Gatehouse on his fateful journey to the Tower of London after the death of his father Edward IV. To the north-west, also half an hour away, is historic Shrewsbury, birthplace of Charles Darwin, with its old cathedral, market squares, theatre and riverside restaurants.

Chevaliers Gatehouse is conveniently located for access to the M5, M6, M54 and M40 motorways. The nearest station is fifteen miles away with frequent inter-city trains from London, Manchester and Glasgow and services to Wales and the West Country. The nearest airport is Birmingham International Airport, approximately 40 miles away.

Local Heritage Attractions

Shropshire has a wide selection of historic houses, castles and gardens to visit. Many are normally open all year but please check the details before visiting to avoid disappointment. We can recommend:



- Dudmaston Hall, near Bridgnorth
- Daniel's Mill, Bridgnorth
- Wenlock Abbey, Much Wenlock
- Buildwas Abbey, near Much Wenlock
- Ludlow Castle
- Stokesay Castle, near Ludlow
- Boscobel House and White Ladies Priory (where Charles II famously hid up the Royal Oak tree in 1651)
- Hampton Court and Gardens, near Leominster
- Wightwick Manor, near Wolverhampton

Family Day's Out

- Severn Valley Railway
www.svr.co.uk

One of the country's most charming vintage steam train lines with a selection of trains (including a refurbished 1930s First Class Dining carriage) that runs along the River Severn between Kidderminster and Bridgnorth. This year the line celebrates its 50th anniversary. Wonderful old-fashioned station pub as well called The Railwayman's Arms.

- Ironbridge Gorge Museums
www.ironbridge.org.uk

- Acton Scott Historic Working Farm
Church Stretton, Shropshire, SY6 5QN

www.actonscottmuseum.com

A super family day out at a Victorian working farm. Lots of animals to feed and hold for young children. Enjoy demonstrations all in the beautiful setting of the Shropshire Hills.

- West Midlands Safari Park
Spring Grove Rd, Bewdley, Kidderminster DY12 1LF
10am - 3pm weekdays and 10am – 4pm weekends
Booking required.

Gardens

- The Dower House Garden at Morville Hall
Telephone: 01746 714407.

The Dower House Gardens occupy a 1.5 acre site in a beautiful setting within the grounds of Morville Hall, near Bridgnorth in Shropshire.

- David Austin
Bowling Green Ln, Albrighton, Wolverhampton WV7 3HB
Telephone: 01902 376334

Breeder of roses. 900 varieties. His show garden is a must see with a lovely tearoom.

- Wollerton Old Hall Garden
Wollerton, Market Drayton TF9 3NA, England
Telephone: 01630 685760

The garden has been designed and developed by Lesley and John Jenkins since 1984, it covers 4 acres, is intensely cultivated and depending upon plant interest, visits can take between 2 and 4 hours.

Local Amenities

Nearest City	Birmingham (53.9km)
Nearest Town	Bridgnorth (7.6km)
Nearest Restaurant	The Woodberry Inn, Bridgnorth (7.5km)
Nearest Supermarket	Budgens, Bridgnorth (7.4km)
Nearest Golf	Bridgnorth Golf Club (9.5km)

What we love

- From super-king canopy beds to a claw tub and underfloor heating, this holiday house exudes luxury.
- Feel like you're in an Elizabethan drama with towering turrets, Tudor-style dining room and spiral staircase.
- Walk the same grounds as its famous visitors, including King Edward V, Charles I and Sir John Betjeman.

What you should know...

- Situated down narrow country lanes 2.5 miles from the main road, the house may be better for quiet evenings in.
- To reach the bedrooms, guests climb a spiral staircase difficult for small children or those with disabilities.
- Due to the rural location the internet speed is variable and can fluctuate when demand is high
- The owners offer their in house catering and cannot accept bookings with local catering companies
- Please note that the property owners live on-site, and will be very happy to help.

Terms & Conditions

- **Security deposit:** £100 charged to client's credit card by Oliver's Travels as a pre-authorisation at least 2 weeks prior to arrival and refunded two weeks after departure, subject to full inspection.
- **Arrival time:** 4pm
- **Departure time:** 10am
- **Energy costs included?:** Yes, included in the rental price
- **Linen & towels included?:** Yes, included in the rental price. Please note that the linen change including towels and sheets is £25/room unless you're staying over a week. This is offered on the 8th day of your stay or at a time arranged with our housekeeper to suit you and is inclusive.
- **Pets welcome?:** A maximum of 2 well-behaved dogs allowed on request at the time of booking. Please note that there will be an additional charge of £30 per dog, per stay.
- **Other Ts and Cs:** Please note that the property owners live on-site, and will be very happy to help.
- **Changeover day:** Flexible
- **End of stay cleaning available?:** Yes, included in the rental price
- **Smoking Allowed?:** No smoking
- **Minimum stay:** 3-nights. 5-nights across July & August & Festive dates.
- **Internet access?:** Wi-Fi internet access included. Please note that due to the rural location the internet speed is variable and can fluctuate when demand is high

Please note that the owners offer their own catering and service staff, that can be enquired at the moment of booking. Bookings with local catering companies are not accepted.