

# County Meath Castle

**Region:** County Meath   **Sleeps:** 17

---

## Overview

County Meath Castle holds a wonderful location, set in a tranquil position just an hour from Dublin on the shores of Lough Sheelin. The 500 year old Norman Keep makes a truly unique setting for your holiday and a wonderful base from which to explore beautiful County Meath.

The Castle was commenced in 1533 by Richard Nugent, the 12th Baron of Delvin and was completed in 1537. It is said by many to be one of the most haunted places in Ireland, haunted by Nugent's daughter Sabina, who fell in love with a handsome young man named Orwin, son of an O'Reilly chieftain. The two families were foes and knowing their love would be forbidden, they eloped together and boarded a boat by the shore, sadly however, a storm took them by surprise. Orwin did not survive and the heartbroken Sabina retreated to her tower bedroom, never to leave again. Sabina is said to haunt the castle's walls to this very day, still searching for her true love.

The Castle can comfortably accommodate up to fifteen guests, across six well appointed bedrooms, three of which are situated on the ground floor making them ideal for guests who struggle with any mobility problems. The remaining three bedrooms are set in the tower and accessed via the traditional spiral staircase. On the first floor, a four poster double room, and the second floor, a twin room, each of which boasting their own en-suite bathrooms. On the third and final floor, is Sabina's room which features an antique half tester bed, en-suite bathroom and boasts wonderful views across Lough Sheelin and the surrounding countryside.

## Facilities

Golf Nearby • Fishing • Stag/Hen Allowed • Chateaux & Castles • Ideal for Parties • Ideal for Kids • Walking/Hiking Paths • Pets on Request • Quirky (Unique) • Ideal for Teens • Ground Floor Bed & Bath • Heritage Collection • Wi-Fi/Internet • Waterfront • Lakes and Mountains • Rural Location • Outstanding Landscapes • Outdoor Pursuit & Activities • Tourist Towns & Villages • Indoor Games • DVD • Working Fireplace/Woodburner • Heating



# Interior & Grounds

## Ground Floor

- Master bedroom with 5' four poster bed, additional single bed and en-suite bathroom
- "Green Room" with 5' four poster bed and additional single day bed- "Yellow Room" with 4'6 small double bed
- Family bathroom

## First Floor

- "O'Reilly Room" with 5' four poster bed and en-suite shower room

## Second Floor

- "Baron's Room" with twin single beds and en-suite shower room

## Third Floor

- "Sabina's Room" with antique 5' half tester bed and en-suite shower room
- "Wizard's Room" with double bed and LED lighting (*set just beneath Sabina's bedroom it makes a fun room for young children!*)

## New Extension

- Large open-plan living & dining area with terrace access
- "Bishops Suite" with 6ft four-poster canopy bed and luxury en-suite bathroom with Victorian slipper bath

## Exterior Grounds

- Gardens

## Additional Facilities

- Wi-Fi
- TV
- Iron & board
- Hairdryers
- Parking





# Location & Local Information

The castle is located truly in the heart of Ireland, with an hour and a half drive to Dublin. It is less than an hour's drive from Northern Ireland or the preeminent Irish heritage sites of Newgrange, Trim, the Hill of Tara or the River Shannon. There are plenty of things to keep the visitor for three or four engaging days touring in the area, enjoying many popular and preeminent sites in Ireland.

Wild Brown Trout, Rainbow Trout, Salmon, Pike, Perch, Bream, Roach and Eel are only some of the most prominent species of fish available to anglers in this area. The extensive waterways such as the River Shannon, River Inny, Gowna Lakes and Lough Sheelin provide many a fine opportunity for some coarse and game fishing. This is an angler's paradise blessed with a multitude of rivers and lakes. Guests to the Castle can pursue the native Brown Trout or go coarse fishing at their doorstep at Lough Sheelin. There are many other small inland lakes in the area, excellent for fishing. However, Lough Sheelin provides the most beautiful setting possible. Visitors can hire a boat.

Why not relax and listen to the rare corncrake on the water meadows of the Shannon near the monastic settlement of Clonmacnoise, or take a walk through the forests at adjacent Mullaghmeen. Visit one of the many local bogs and shore areas teeming with an abundance of bird life, or travel the country roads looking for Ireland's avi-fauna.

The Shannon-Erne Waterway is the leading waterway in Ireland. Cruising on the River Shannon and the Grand Canal is an ideal way to experience the Irish countryside. The Castle is ideally located to serve as base for cruising-day trips on the area's waterways.

The scenery around the Shannon and the Loughs in the area is a beautiful accompaniment. The roads are not busy and amenity areas are a regular occurrence for all travelers. The Lough Sheelin Region has a particular attraction for the cyclist in light of the fact that the dedicated cycling route from Killala in Co. Mayo to Ballinamuck in Longford is now open.

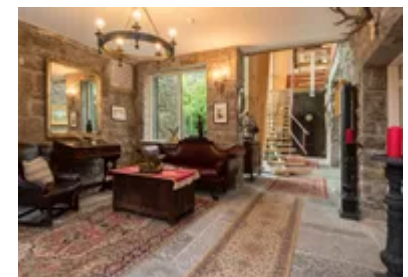
Learning to fly or enjoying a fly-over of the area can be arranged through Oliver's VIP Concierge Team. The nearest airport is in Abbeyshrule.

Ireland is the home of Golf! Numerous excellent 18 hole parkland and link courses are situated in this region, providing a challenge to golfers of all levels with a multitude of championship courses to choose from. The nearest course is across the lake at Crover House.

Racing "the dogs" is an Irish tradition, a popular spectator sport where the thrill of the race ensures a thoroughly enjoyable night out. Greyhound Race tracks with frequent races are found in nearby Mullingar and Longford.

Co. Meath contains four horse racing tracks which hold numerous events during the year. Point to Point local meetings are very popular among local horse racing followers in the area. Horse racing at Kilbeggan is an action packed spectator sport and on racing nights the quiet midland town is transformed into a festival.

There are a couple of equestrian centres found in the vicinity offering riding and trekking over farmland, mountain and forest trails. This region offers a horse riding experience to suit both beginners and more experienced riders.



The beautiful terrain of this region makes it a very suitable horse riding area. For pony trekking, cross country and showjumping, arrangements can be made at nearby Ross House. The Equestrian Centre will meet all your needs on the horse front. They offer pony trekking, riding lessons, cross country outings or showjumping. It is possible to stable horses there if required.

Lough Sheelin offers opportunities for sailing enthusiasts. Dromineer and Garrykennedy on the River Shannon are ideally suited for those who sail for fun or in competition. Sailing courses are available in some areas.

The Irish Midlands offer an abundance of hiking opportunities: Why not try the Boyne Way, Navan to Slane, or the walking trails around Loughcrew Hills. The Cavan Way offers excellent opportunities for the walker, as do the many unmarked trails and side roads. Mullaghmeen, an extensive forest park only a short distance from the Castle, is the most well known in this area. With its splendid beauty, it is a delight for all walkers and nature enthusiasts.

Some water sports can be carried out on Lough Sheelin in the summer. Opportunities also exist at other lakes in the area, some of which are specialized for certain activities such as sailing or canoeing.

Some more urban activities and entertainment such as bowling, carting, cinemas or pools can be found in the larger towns of Cavan, Longford, Navan or Mullingar, which are all within a 30 – 45 minute drive.

## Local Amenities

Nearest Airport	Dublin (91-100 km)
Nearest Bar/Pub	Mountnugent (5 km)
Nearest Beach	Dublin (91-100 km)
Nearest Ferry Port	Dublin (91-100 km)
Nearest Golf	Crover House Hotel (10 km)
Nearest Restaurant	Oldcastle (12 km)
Nearest Town/City	Oldcastle (12 km)
Nearest Village	Mountnugent (5 km)

## What we love

- After a delicious meal, why not warm up by the blazing fire.
- There is a wonderful view of Lough Sheelin from the tower rooms.
- Why not try your hand at a spot of fishing in the lake, please speak with the caretakers for further details on your arrival.
- Or even go horse riding at the nearby stables, which are less than 1km away.
- The charming caretakers can also organise Clay Pigeon shooting at their nearby organic gardens, and can lay on pre/post shoot refreshments.

## What you should know...

- The tower room has 65 narrow steps
- The castle is in a very rural location and so a car will be needed in order to reach nearby amenities

# Terms & Conditions

- **Security deposit:** £1000 charged to client's credit card as a pre-authorisation at least 2 weeks prior to arrival and refunded two weeks after departure, subject to full inspection.
- **Arrival time:** By appointment only.
- **Departure time:** 12.00
- **Energy costs included?:** Included in the rental price.
- **Linen & towels included?:** All linen and bath towels are included in the rental price.
- **Pets welcome?:** On request only and with prior agreement with the owner. If accepted, a pet supplement of €15 per pet per day will apply (paid to OT prior to travel).
- **Changeover day:** Any day of the week.
- **End of stay cleaning available?:** Included. Please leave the property in the state that you found it.
- **Smoking Allowed?:** No smoking in the property.