

Inglethorpe Hall

Region: East Of England Sleeps: 20

Overview

It is little wonder that the magnificent Grade II listed Inglethorpe Hall has won prestigious awards including Norfolk Wedding Venue of the Year. This accolade in the Prestige Awards 2021 is due to the hall's fabulous reception spaces, a delightful terrace and the wide, sweeping lawns and rolling parkland that surround this gorgeous property. The grounds are a photographer's and a holidaymaker's dream. Inglethorpe Hall, built in 1745, is set in thirty acres in Ingoldisthorpe on the boundary of the Royal Estate of Sandringham. It is a location perfect for birdwatchers, lovers of vast sandy beaches and huge skies, golfers, foodies, sailors, cyclists, walkers and families. With nine bedrooms sleeping up to twenty guests, Inglethorpe Hall is perfect for special events, special occasions, family get togethers, yoga and art retreats and corporate events. This fabulous location is within easy reach of the sensational sands of Holme next-the-Sea, Brancaster, Holkham and Wells next-the-Sea, superb nature and wildlife reserves, historical houses including Royal Sandringham and Houghton Hall, the National Trust's Blickling Estate, Felbrigg Hall and Oxburgh Hall, the charming market towns of Burnham Market and Holt and the most fabulous selection of fine dining restaurants and gastropubs. Wildlife lovers are in for a treat with RSPB Snettisham, RSPB Titchwell, the Holme National Wildlife Trust, Pensthorpe Waterfowl Park and Blakeney National Nature Reserve all quite close by. Inglethorpe Hall has been beautifully renovated whilst maintaining its historic charm and fabulous nods from the past. Some of the nine bedrooms enjoy original four-poster beds and throughout the house you will discover fabulous period features including huge fireplaces, enormous sash windows, attractive cornicing and plaster finishes and beautiful floors. The entertaining spaces are just brilliant with two spacious inter-connecting sitting rooms, a television and games room, a snug, a large social kitchen and breakfast room and a separate formal dining room. Fabulous wallpapers and colour palettes have been chosen to make the rooms look amazing whilst creating a feeling of 'home away from home'. You will feel immensely welcome and comfortable while enjoying these grand spaces. The attention to detail is amazing and it will take you all week to take everything in. Inglethorpe Hall is the perfect venue for small, intimate weddings with its two beautiful reception rooms and stone steps leading to a generous terrace and rolling parkland. The reception rooms are drowned in natural light and offer fireplaces alongside sumptuous furnishings to create a cosy, warm atmosphere. Alongside vintage furniture, you will sink into modern sofas, all adorned with attractive scatter cushions. The artwork is traditional and totally in keeping with this beautiful house. The characterful dining room enjoys two large tables, atmospheric beams and elegant decor for a wedding meal or group dining. The country kitchen is very sizeable with everything you need to prepare hearty and delicious meals. The house also boasts a large pantry for all of your supplies. The television and games room offers several games tables including table tennis, pool and table football. There is an excellent selection of films and a very large television. It is a very popular room for young ones after a day on the beach. The snug is the ideal space to disappear to with the Sunday newspapers and a cup of tea. The hallways are



all beautifully presented with antique furniture and paintings. The bedrooms are all on the upper floor, five of them enjoying ensuite bathrooms and the remaining north wing rooms sharing a family bathroom. There are three masters, one at each end of the house and the other enjoying a central position. Each bedroom offers its own lavish styling, four with four poster beds, others with kingsize beds or twin beds and one with bunk beds. One of the larger bedrooms enjoys a day bed with a pull-out mattress underneath that can be used for two children. Some of the rooms boast fireplaces adding to their character and they all enjoy vintage furnishings and rugs. They are utterly charming, boasting fabulous colour palettes, attractive floral wallpapers and many handpicked touches. You feel that this is a much loved house. The rooms offer large sash windows which not only keep them bright airy, guests enjoy beautiful views of the gardens and parkland. The bathrooms have all been beautifully revamped and are presented with style and luxury. There are a mix of corner baths, walk-in showers and freestanding baths. You will feel pampered for sure. The grounds of Inglethorpe Hall are a total delight with tall, proud trees offering shade, a large terrace beautifully furnished for alfresco dining and drinks and acres of lush lawn and parklands. The Cedar of Lebanon tree at the front of the house is believed to be over five hundred years old. Inglethorpe Hall is the perfect place to get together in large groups, to enjoy countryside tranquility, to enjoy breathtaking views over to the coast and to celebrate. You will leave with magical memories of this grand old house and its many qualities.

**The three booking options available at Inglethorpe Hall are: 3 night weekend stay, a 4 night midweek, or a whole week. Changeover days are Monday and Friday. 1 and 2 night bookings are available, but are priced at the same rate as 3 night bookings.*

**Although Inglethorpe Hall is listed as having 9 bedrooms, sleeping up to a maximum of 20 people, there are 3 additional cottages (sleeping up to an additional 14 people) located within the grounds that can be rented at an additional cost. Please ask our concierge team for additional information regarding prices for the additional cottages.*



Facilities

Golf Villa • Wi-Fi/Internet • Weddings • Ideal for Parties • Fishing • Walking/Hiking Paths • Recommended • Cots (Cribs) • Chef/Cook Available • Indoor Games • Rural Location • Table Tennis • Pool/Snooker • Quirky (Unique) • Great Value • Manor • Has Discount • Special Offer • Maid Service Available • Beach Nearby • Games Room • DVD • Outdoor Ceremony • Heritage Collection • Country Estate • Indoor Reception Available • Babysitting Available • Professional nanny babysitter available • Ideal for Kids • Ideal for Teens • Pets on Request • Hot Tub • Walk to Restaurant • AGA • Satellite TV • Table Football • Working Fireplace/Woodburner • Heating • Conference Facilities • High Chair(s) •

Interior & Grounds

The Property

Ground Floor

- Sitting room with open fire
- Drawing room with open fire
- Dining room with wood-burning stove
- Farmhouse-style, fully-equipped kitchen with Aga, 2x microwaves, 2x dishwashers and 2x fridge freezers
- Games room with wood-burning stove, pool table, table tennis, darts and football table
- Three cloakrooms

First Floor

- Bedroom with antique four-poster double bed and en-suite bathroom
- Bedroom with antique four-poster double bed and en-suite bathroom
- Bedroom with antique four-poster double bed and en-suite bathroom
- Bedroom with sleigh double bed and en-suite bathroom
- Bedroom with double bed with in-room bath and washbasin – Shared bathroom opposite
- Bedroom with double bed
- Bedroom with double bed– Shared bathroom across the corridor
- Bedroom with twin single beds (Jack and Jill Bathroom shared with bunk room)
- Bedroom with bunk beds (Jack and Jill Bathroom shared with twin room)
- Family bathroom with shower

Exterior Grounds

- Lawned garden
- Terrace
- Dining facilities
- Barbecue
- 30 acres of grounds
- Hot tub

Additional Facilities

- Wi-Fi
- SKY TV
- DVD
- Washing machine & dryer
- Two travel cots
- Highchair
- Ample parking



Location & Local Information

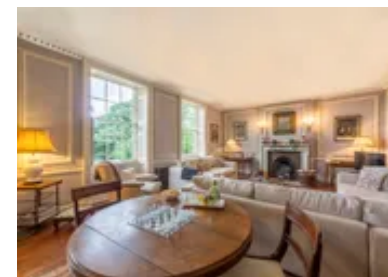
Inglethorpe Hall enjoys a fabulous countryside location in Ingoldisthorpe on the boundary of the Royal Estate of Sandringham in North Norfolk. It is a fabulous area close to phenomenal sandy beaches, prestigious golf courses and famous historic houses including Sandringham.

Just around the corner is Snettisham, popular for RSPB Snettisham which is only a five minute drive from the house. Here you will see waders, wildfowl and, between August and January, you will see tens of thousands of birds leaving the mudflats and landing in the Snettisham hides. You will experience spectacular aerial displays and watch huge numbers of pink-footed geese fly over from Iceland. The estate is also home to resident barn owls and that soft hooting is joyful. Just a short drive away on the coast is RSPC Titchwell, another popular spot for birdwatchers. Pensthorpe Waterfowl Park is very popular with families.

Golfers can enjoy rounds at Heacham Manor Golf Club, Fakenham Golf, Searles Golf Club, Hunstanton Golf, Royal Cromer Golf and Kings Lynn Golf Club. Not only do most of the courses enjoy beautifully manicured greens nestled in a landscape of dunes, they also come with stunning sea views.

The area is also excellent for sailing. Coastal Exploration Company offers a variety of options for day and half-day trips and sailing lessons. One of the most popular boat trips is from Morston to see the seals at Blakeney. There are plenty more boat trips, one being from Hunstanton which is very close to Inglethorpe Hall.

There are many wonderful beaches within easy reach of the house. Old Hunstanton is just ten minutes away with its gorgeous dunes, soft sand, big skies and a sea full of wind and kitesurfers. At one end of the beach you will find the lighthouse and, tucked in the dunes, are some colourful beach huts. The beach continues into Hunstanton where you can enjoy the family amusement arcades, shops and cafes. In the opposite direction, the blissful Holme next-



the-Sea Beach is just stunning. The dunes, wildflowers and the boardwalk are wonderful. It is never very busy here, even in the August. It is popular with horse riders and dogs for its huge expanses of sand. Just along from Holme is Brancaster, a designated area of Outstanding Natural Beauty. The most famous of the North Norfolk beaches is Holkham Bay. The beach is one of the most unspoilt and beautiful stretches of sand in the country. With a glorious semi-circle basin filling to form a spectacular shallow lagoon at high tides, this beach is famous for the closing scene in Gwyneth Paltrow's 'Shakespeare in Love'. You can walk from Holkham to Wells, a beautiful walk past dunes, colourful beach huts and plenty of small rivulets and streams.

The Holkham Estate is huge at 25000 acres. Holkham Hall is rich in history, architecture and wildlife. The seat of the Earl of Leicester, this elegant 18th century mansion is still a much loved, lived-in family home which visitors can also enjoy. There are 6 acres of walled garden, originally laid out by Samuel Wyatt in the late 1700's. Visitors enjoy the walking and cycling paths, the lakes, watching the deer, the tree top high ropes course with its swings, bridges and ziplines, rowing boats, canoes and kayaks on the lake and the woodland play area. It is an outstanding family excursion.

If you enjoy a potter around the shops, Burnham Market and Holt are perfect. Brimming with unique independent shops, welcoming gastropubs such as the Hoste, cute delis, cafes and galleries, all around a delightful village green, Burnham Market is incredibly popular. The August arts and crafts fair is fabulous with craft stalls, pop up eateries, puppet shows, alfresco dining and a very jolly atmosphere. Holt is another Norfolk gem, again with wonderful art galleries, eateries and charm. Drove Orchards between Holme next-the-Sea and Brancaster is another shoppers paradise with some gorgeous shops, Gurneys fish shop, an excellent garden shop and the famous Eric's fish and chips and pizza restaurants. Just a little further comes the outstanding Thornham Deli.

North Norfolk is wonderful for hiking and cycling. The woods at Sandringham are wonderful with a selection of

different trails. Sandringham, the much-loved country retreat of Her Majesty the Queen, has been the private home of four generations of British Monarchs since 1862. You can pay to visit the beautiful Sandringham Gardens and Sandringham House. You can also visit St Mary Magdalene Church where you see the royal family on many Christmas mornings, the children's playground and the parkland.

Local Amenities

Nearest Airport	Norwich (61-70 km)
Nearest Bar/Pub	Rose & Crown (3 km)
Nearest Beach	Hunstanton (9 km)
Nearest Ferry Port	Ipswich (Over 100 km)
Nearest Golf	Hunstanton Golf Club (11.5 km)
Nearest Restaurant	The Rose & Crown (3 km)
Nearest Town/City	Kings Lynn (10 km)
Nearest Village	Snettisham (3 km)

What we love

- Inglethorpe Hall is a fantastic choice of property for large groups. It sleeps up to twenty guests and is perfect for celebrations, small, intimate weddings and family get togethers
- This historic, beautifully renovated Grade II listed country house enjoys acres of sweeping parkland and exceptional views across the Norfolk coast
- The house offers a wonderful mix of vintage furnishings, elegant décor, luxurious modern furnishings and ancient nods from the past

What you should know...

- The house sleeps up to twenty guests. This includes one family room where two children can sleep on the day bed and lower pull out mattress and the bunk room
- Please speak to our Concierge Team if you are celebrating a special event and would like some additional services such as catering
- There is so much to do and see in North Norfolk, you should plan ahead. The gastropubs and restaurants can be very busy so please book in advance

Terms & Conditions

- **Security deposit:** £500 to be paid prior to arrival and to be refunded in full subject to a damage inspection on departure. Please note that this is increased to £1000 for stag/hen parties
- **Arrival time:** 4:00 pm
- **Departure time:** 10:00 am
- **Energy costs included?:** Yes, included in the rental price
- **Linen & towels included?:** Yes, included in the rental price
- **Pets welcome?:** A maximum of 2 well-behaved dogs are allowed on request for an additional charge of £25 per dog, per stay. Pets are strictly not to go on the furniture and should stay downstairs at all times. You are responsible for removing all evidence left by your pet
- **Changeover day:** Friday or Monday
- **Smoking Allowed?:** Smoking & Vaping are not permitted
- **Minimum stay:** Please note that there is a 3-night minimum stay at weekends, this may be increased to 4-nights mid-week
- **Internet access?:** Yes, Wi-Fi is included in the rental price