

C17th Castle

Region: The South West **Sleeps:** 16

Overview

This impressive 17th century Castle is a Grade II listed detached hill-top property enjoying glorious 360 degree views over wooded North Somerset countryside on one side and across the Bristol Channel to Wales on the other. The castle is situated at the end of a private road high above Clevedon golf club. It makes the perfect holiday retreat for guests wanting to stay in-style while exploring Somerset, local attractions and the beautiful surroundings, it also is a fairy-tale like venue for those planning a special celebration or corporate event!

The main part of the accommodation is housed across 4 levels in an octagonal keep, which sits in the centre of a beautifully maintained lawn and cobbled courtyard. On arriving through the main entrance, steps take you up to the impressively large kitchen with beautiful circular granite dining table. There is a spiral staircase down to the lower level, in this part of the castle, there are two double bedrooms which share a "Jack and Jill" style en-suite bathroom. Going back upstairs, on the first floor there is a grand sitting room with large stone fireplace and a 50" plasma TV, on this level there is also a library and reading room. On the final and second floor, there is a magnificent master bedroom with en-suite bathroom boasting a roll-top bath as well as a private terrace which is the perfect place from which to enjoy a drink while admiring the gorgeous views.

Access to the indoor pool is via the sunken patio, accessed either from the Keep lower bedroom or via the flagstone steps at the rear of the Keep. The indoor pool also has double doors that lead into a private patio area, perfect for a BBQ.

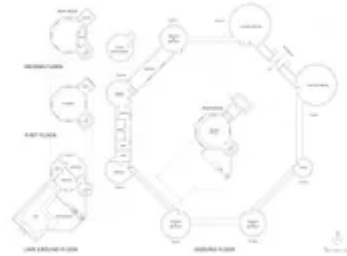
Surrounding the Keep, are 8 turrets, 2 of which are large and perfect for larger parties, dining and dancing. 5 Turrets are bedrooms, all self-contained with soft furnishings, toilet and shower. One of these turrets is also the 'entertainment turret' with pool table, table football, darts, lawn games, 48"TV, as well as a living room, kitchen, bathroom and double bedroom.

Simply a stunning location to bring people together for special occasions, family gatherings and holidays.

Weekend prices generally range from £3000 to £8500 (for 3 days & 2 nights) and midweek stays range from £1500 to £5500 (for 3 days & 2 nights). Please ask our concierge team for further details regarding midweek stays.

Facilities

Beachfront • Private Pool • Marquee Hire Permitted • Beach Nearby • Weddings • Games Room • Golf Nearby • Has Discount • Wi-Fi/Internet • Has Offer • Special Offer • Quirky (Unique) • Chateaux & Castles •



Pool/Snooker • Licensed for Marriage • Outdoor Ceremony • Flexible Catering Options • Allow Ceremonial Fire • Heritage Collection • Country Estate • Allow External Caterers • Allow Fireworks • No Curfew • Indoor Reception Available • Nearby Church/Chapel • Animal farm • Yoga Classes Available • Spa Treatments Available • Catering Available • Board games • Recommended • Professional nanny babysitter available • Meal delivery service • Indoor Pool • Boules/Petanque • Ideal for Babies & Toddlers • Pool inflatables • Ideal for Kids • Ideal for Teens • Pets on Request • All Bedrooms En-Suite • Ideal for Xmas/NY • Satellite TV • Table Football • Parking Space • Canoeing/Kayaking • Skiing • Horse Riding • Go-Karting • Outstanding Landscapes • Outdoor Pursuit & Activities • Tourist Towns & Villages • Historical Sites • Decorated for Christmas

Interior & Grounds

The castle has 8 en-suite bedrooms. During the summer months, the stunning lawns are ideal for receptions for larger groups.

Main Building

Ground Floor: Main entrance through to hallway. Steps up to kitchen with oven, fridge/freezer, dishwasher, granite work surfaces, marble floor and a unique granite table seating up to 16. Turning staircase down to lower ground floor.

External Lower Ground Floor: Indoor swimming pool via separate entrance down steps. Double French doors with access to exterior patio.

Lower Ground Floor: Hall. Double bedroom with patio access. Double bedroom. 'Jack and Jill' bathroom with large Jacuzzi bath and twin basins. Guest toilet.

First Floor: Sitting room with bar area, large fireplace, TV and stone fireplace and adjoining library room.

Second Floor: Octagonal master bedroom with king-sized bed and en-suite bathroom with rolled top bath. Roof terrace with stunning views, ideal for pre-dinner drinks.

External Turrets

There are 8 separate turrets each located 30 yards across the courtyard from the main building. There are sitting spaces in the courtyard and a gas barbecue. The turrets are electrically heated and are kept comfortably warm from having very thick walls.

Turret 1: Function/party room with sound system, dance floor and air-conditioning

Turret 2: Utility room with washing machine, dryer and WC

Turret 3: Double bedroom with king-size bed and en-suite bathroom with shower and WC

Turret 4: Double bedroom with king-size bed and en-suite bathroom with shower and WC

Turret 5: Double bedroom with en-suite bathroom with shower and WC.

Turret 6: Self-contained two-level apartment comprising of a shower room, kitchen, including dishwasher, microwave and dining space for 3, sitting room with games area and a double bedroom. There is a lower basement level of the apartment which boasts a pool table, table tennis and a comfy sofa

Turret 7: Double bedroom with en-suite bathroom with shower and WC

Turret 8: "Bar Turret" with dining facilities that can seat up to 80 guests, bar area, air-conditioning and fantastic views of the castle and lawns

There are 2 additional single beds and 1 sofa bed available at an extra cost of £25 per night.



Location & Local Information

The castle sits in an unbeatable spot above the charming Victorian seaside town of Clevedon, offering stunning views in every direction. From the castle, you can look out over the private grounds and Clevedon Golf Course below. Beyond that, the views stretch across the Bristol Channel towards Wales, as well as over the beautiful countryside to the north and east. Clevedon has plenty to explore, including its iconic Victorian pier, a range of restaurants, shops, galleries, cafés, and bars. You can also enjoy Clevedon Marine Lake, the outdoor pool, and scenic cliffside walks. For nearby activities, visit Clevedon Golf Course right on your doorstep, try fishing at the River Wye and Blagdon Lake, horse racing at Chepstow and Wincanton, and sailing on the Bristol Channel and Chew Valley Lake.

The castle is perfectly situated to the west of Bristol with excellent access to both the M5 and M4 motorways. Bristol International Airport, with international and domestic services, is 12 miles to the south. Regular train services run from the nearby station at Yatton (3 miles) to London Paddington, taking 90 minutes.

Local Amenities

Nearest Airport	Bristol (10 miles)
Nearest Train Station	Yatton (3 miles)
Nearest Town/City	Clevedon (1.3 miles)
Nearest Golf	Clevedon Golf Club (400 metres)
Nearest Restaurant	Clevedon (1 mile)
Nearest Bar/Pub	Clevedon (1 mile)
Nearest Shop	Clevedon (1 mile)



What we love

- If you are wanting to venture out at night, try eating at Il Giardino in Clevedon, they offer a beautiful view of the sea, with magnificent sunsets.
- Clevedon Pier, 5 minutes drive away, is where One Direction filmed their song 'You & I'. They also stayed at this C17th Castle!
- The master bedroom in the main tower has it's own balcony. It offers a beautiful view of the surroundings. A little table is on the balcony, great to have drinks and admire the colours of the sunset and sunrise. From the bed, each window has a different view.
- Have a BBQ on the outdoor sun terrace and then open the door into the house and go for a dip in the heated pool... fun all year round!
- A peaceful golf course is situated next to the castle.

What you should know...

- Mobile reception can vary depending on provider
- Bedrooms split between the main house and the turrets. This gives more privacy to everyone. The kitchen is huge giving you more than enough space to be all together!

Terms & Conditions

- **Security deposit:** £1000 paid via bank transfer to the owner before arrival and refunded two weeks after departure, subject to full inspection
- **Arrival time:** 4:00 pm
- **Departure time:** 10:00 am
- **Energy costs included?:** Yes, included in the rental price
- **Linen & towels included?:** Yes, included in the rental price
- **Pets welcome?:** One well-behaved dog is allowed on request at the time of booking.
- **Other Ts and Cs:** High cot and chair are available on request
- **End of stay cleaning available?:** Yes. However, guests are required to leave the accommodation clean, tidy and in the same condition as on their arrival. Any extra cleaning, laundry, maintenance and/or rubbish disposal required will be charged against the security deposit
- **Smoking Allowed?:** No smoking in the property

Private hire rates for up to 16 guests:

Single night prices:

Monday - £3250

Tuesday - £3250

Wednesday - £3250

Thursday- £3450

Friday - £4000

Saturday - £4500

Sunday - £4000

Additional nights are charged at £1400

Prices are calculated using the top single night price during your booking then adding £1400 per additional night. Overnight accommodation is for 16 guests or up to 20 by prior arrangement.