

Gwynedd House

Region: Snowdonia **Sleeps:** 20

Overview

Treat yourselves to a peaceful and tranquil break in this luxurious ten bedroom, C16th country house. The house sits snugly in the mountainous area of Snowdonia, North Wales, just a short walk from the sandy delights of the Llŷn Peninsula and the bustling seaside town of Criccieth.

Gwynedd House offers large group accommodation, either on a self-catering basis or with in-house catering. Local activities range from golf to surfing.

Sleeping up to twenty-one guests, this south facing, fantastic house is set in seven acres of garden and woodlands and is perfect for large parties wanting to celebrate a special occasion!

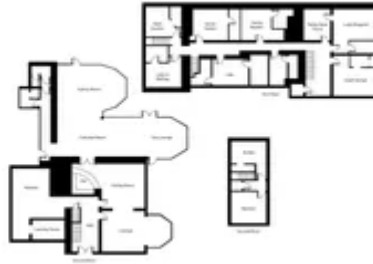
Over 400 years old, this country home was once the home of the family of Lloyd George, the Liberal Prime Minister, in the late 1900s. More recently the property has been used as a lovely country hotel.

Set in seven acres of land, there is more than enough space for the whole family to enjoy! The gardens have been beautifully maintained, the seating area is the perfect spot to relax with a glass of Pimms amongst the beautiful azaleas, hydrangeas and roses, while watching your loved ones enjoy a game of tennis or boules! On a warm Summer's evening there is nowhere better to be than on the terrace watching the sunset or making use of the brand new fully covered outdoor kitchen. Designed to accommodate our versatile cooking appliances, it features a Gas Weber barbecue for easy grilling, a Kamado Joe Kettle charcoal barbecue that delivers rich, smoky flavors, and a handcrafted Vitcas wood-fired pizza oven, perfect for creating artisanal pizzas. This setup offers fun for all ages, allowing everyone to make their own personalized pizzas. Additionally, it's perfect for slow-cooking incredibly tasty roasts and preparing complete meals for larger groups. Enjoy the panoramic view of Cardigan Bay while gathering around the kitchen island, which provides ample space for cooking and family fun!

Spring, summer, autumn or winter, Gwynedd House welcomes you year round!

Facilities

Chef/Cook Available • Lakes and Mountains • Laptop Friendly Workspace • Great Value • Pool/Snooker • Table Tennis • Tennis Nearby • Walk to Village • Rural Location • Indoor Games • Cots (Cribs) • DVD • Beach Nearby • Games Room • Golf Nearby • Wi-Fi/Internet • Maid Service Available • Manor • Food blender • Heritage Collection • Animal farm • Kid-friendly museum • Kid-friendly excursions • Water excursions/Boat trips • Pre-Stocked Fridge Available • Yoga Classes Available • Spa Treatments Available • Forest park/High-rope course • Catering Available



• Breakfast Available • Board games • Recommended • Playground •
Property host • Swings • Meal delivery service • Croquet •
Boules/Petanque • Ideal for Babies & Toddlers • Ideal for Kids • Tennis
rackets • Booster seat • Baby bath • Ideal for Teens • Pets on Request •
Walk to Restaurant • Washing Machine • Tumble Dryer • Dishwasher •
Microwave • AGA • Hairdryer • All Bedrooms En-Suite • Ideal for Parties •
Ideal for Xmas/NY • Tennis Court • Outdoor Games • Working
Fireplace/Woodburner • Fire Pit • Heating • Conference Facilities •
Caretaker/Owner on Site • High Chair(s) • On-Street Parking • Seaview •
Walking/Hiking Paths • Cycling • Horse Riding • Go-Karting • Fishing •
Outstanding Landscapes • Outdoor Pursuit & Activities • Tourist Towns &
Villages • Surfing

Interior & Grounds

Bedrooms

Floor 1

- Lloyd George (Bedroom 1) has a four-poster bed, and a modern en suite bathroom fitted with a steam room that seats two. The bedroom has sea and garden views
- Lady Margaret (Bedroom 2) has a Super King zip-and-link bed (can be split into two single beds). It is spacious with chaise-lounge, and modern en suite bathroom with solid cherry and granite fittings, bath and shower. With sea and garden views. There is an adjoining door to :-
- The Teddy Bears Picnic Room (Room 3) with full-size bunk beds which can form a spacious Family Room, again with sea views.
- The Young Masters (Bedroom 4) has twin beds, an en suite with a large walk in shower. Has sea and garden views
- The Lilac Room (Bedroom 5) has a King size bed – an adjoining small bedroom with single bed.. There is an en-suite stylish bathroom with large walk-in shower. The bedroom overlooks the drive and gardens.
- The Secret Garden (Bedroom 6) is a twin bedroom, en suite, fitted with a bath and over-bath shower. The room has a view of the walled gardens and woods.
- Lady-In -Waiting (Bedroom 7) is a double bedroom, fitted with a bath and over-bath shower. The room has a view of Lane and Gardens.
- The Herb Garden (Bedroom 8) has a King bed, with en suite bathroom, comprising of large walk-in shower, toilet and basin. The room has a view of the sea, walled garden and woods.

Floor 2

- The Butlers Room (Bedroom 9) Has a King Brass Metal bed, large marble hand basin.it has an en suite shower room. This room has lovely sea views of Cardigan Bay.
- The Nautical Room (Bedroom 10), Twin Room has a sea-side theme, with views of countryside /sheep and mountains

The Butler Room and Nautical Room together are an ideal quiet family

Games Room and Lounge

Enjoy a relaxing evening watching a film from our DVD selection on the projector screen, or take on the family with a competitive game of pool, table tennis or even Monopoly! From traditional board games, to poker or pool, Gwynedd House offers:

- Full-size table tennis
- Pool table
- Lots of board games, cards and poker chips
- Chess table
- Cricket bats and balls
- Rounders equipment
- Croquet
- Boules
- Webber gas barbeque
- Kamado Joe Kettle charcoal barbeque
- Vitcas wood fired pizza oven



Outside

In the drowsy warmth of summer, relax in seven acres of gardens among the azaleas, hydrangeas, and roses, while enjoying sun-sparkling views across Cardigan Bay to Snowdonia and beyond. Challenge friends and family to a game on the boules court, perfect for all ages, adding a touch of friendly competition to your stay. Or, take advantage of the fully equipped, covered outdoor kitchen, perfect for grilling, smoking, and creating lasting memories.

Children love the freedom to play riotous games of football, rugby and cricket, or simply ride the tree swings, and play with the cat, dog, ponies and chickens. Outdoor amenities include:

- Hard-weather tennis court, with views down to Cardigan Bay.
- 4 x basic tennis rackets available. Please bring your own tennis balls.
- The spacious grounds can be transformed into 'The Oval' for an afternoon game of cricket, 'The Olympic Stadium' for an energetic decathlon or 'La Place de L'hotel de Ville' for a relaxing game of boules. All the equipment is provided.

Location & Local Information

From your luxurious base at Gwynedd House, enjoy the best that North Wales has to offer:

Golf

The house is a stone's throw from Criccieth Golf Club (with special prices for golfing parties staying at the house). Other local golf clubs include Nefyn, Pwllheli, St David's, and Porthmadog. Oliver's VIP concierge team can arrange tee times for you, plus a 10% discount. Maximum golfing parties: 10 (single occupancy), or up to 18 sharing.

Local Attractions

- Portmeirion Village & Gardens
- Festiniog Railway - Welsh Highland Railways
- Lloyd George Museum
- Caernarfon Castle
- Conwy Castle

Local Activities

Zip World

From the longest zipwire in the world to Bounce Below, a huge subterranean playground, Zip World is located on 3 sites in Wales and offers adrenalin-fuelled experiences for all ages.

- a) Penrhyn Quarry Bethesda (Velocity and Quarry Tour)
- b) Zip World Forest at Betws y Coed (Zip Safari, Plummet and Skyride)
- c) Slate Caverns Blaenau Ffestiniog (Titan, Bounce Below and Caverns)

Lon Eifion Cycle Route

This scenic route from Caernarfon to Bryncir runs alongside the Welsh Highland Railway and offers wonderful views of Caernarfon Bay and Snowdonia.

Surf Snowdonia

A revolutionary world-first inland surf lagoon roughly the size of six football pitches, set in the lush, green Conwy Valley in the lee of the Snowdonia mountains.

Bear Grylls Dragon Raiders Activity Park

Survival academy, paintball park and Segway adventures based in the heart of north Wales.

Pen Llyn Lusitano Stud and Riding Centre

Trekking, stable days, beach rides and lessons from the leading Lusitano stud in the UK.

Porth Neigwl (Hells Mouth) – West Coast Surf

Hells Mouth Surf School offers quality, fully qualified, insured and regulated surf school on the Peninsula since 1996 and have helped thousands of people with their first surfing experience.

Coed-y-Brenin

Coed y Brenin not only has miles of exceptional singletrack for experienced and expert riders, but also great family and intermediate trails for all abilities. Bring your own or hire a bike.



Antur Stiniog Downhill Trails
Stiniog offers six fantastic downhill mtb trails, graded blue to black and the best mountain bike uplift service in the UK. Also offered is mountain bike coaching to riders of all levels, from beginner to expert; from trail riders to downhill racers.

Abersoch Sailing School
Sailing and powerboat lessons, sea kayaks, paddle boards, pedalos and ringo rides. Equipment available to hire.
[Click here to find out more!](#)

Glasfryn Park
Go Karting, Quad Biking, Wakeboarding, Ten Pin Bowling and a Soft Play Centre (and much much more!). Homemade food is served all day. Admission and Parking is FREE!

Redline Indoor Karting
Groups and individuals are catered for, from absolute beginners to corporate hospitality events - all under the expert supervision of fully trained staff.

Beacon Climbing Centre
The largest indoor climbing centre in North Wales, welcoming all climbers and offering a full range of indoor climbing from relatively easy challenges for those new to the sport to fiendishly difficult climbs capable of testing the best climbers around.

Walking in Snowdonia
Snowdon itself, is obviously the prime destination for many with 6 popular routes to the summit of varying difficulties, but endless other walking routes around Snowdonia and the Llyn.

Dwyfor Health and Nordic Walks
Nordic Walking Taster sessions from the grounds of Mynydd Ednyfed to guided 6 hour walks further afield.

Shearwater Coastal Cruises
Specialising in scenic coastal cruises, visiting off-shore seal and seabird colonies where you can usually see and are regularly joined by the resident dolphins.

- Recommended Food & Drink**
- *Ty-Coch Inn*
- *Dylan's Restaurant Criccieth*

Local Amenities

Nearest Airport	Liverpool (Over 100 km)
Nearest Ferry Port	Holyhead (71-80 km)
Nearest Village	Criccieth (2 km)

Nearest Town/City	Criccieth (2 km)
Nearest Restaurant	Dylans Restaurant (3 km)
Nearest Bar/Pub	The Prince (2 km)
Nearest Beach	Criccieth (2 km)
Nearest Golf	Criccieth (2 km)
Nearest Tennis	(On Site)

What we love

- Gwynedd House is surrounded by seven acres of landscaped gardens and woodlands; ideal for relaxing with a glass of Pimms or playing tennis or boules
- A fully covered outdoor kitchen featuring a gas barbecue, charcoal grill and a wood-fired pizza oven, all with panoramic views over Cardigan Bay.
- Golf lovers can stroll to the nearby Criccieth Golf Club for a round with stunning coastal scenery.

What you should know...

- Please note that Gwynedd House is set on a working farmstead, so you may see the owners and their team tending to plants and livestock around the grounds.
- With self-catering or private chef options available, we recommend arranging catering in advance, especially for special occasions. Simply fill in the concierge request form (<https://oliverstravels.tfaforms.net/16>) or contact the Oliver's Concierge Team, who will be happy to help.
- With seven acres of gardens, woodlands, and outdoor activities including a tennis court, young children should be supervised at all times when exploring or using the facilities.

Terms & Conditions

- **Security deposit:** £500. This is to be paid directly to the property owner prior to arrival and will be refunded in full after departure subject to damage inspection
- **Arrival time:** 16.00 pm
- **Departure time:** 10.00 am
- **Energy costs included?:** Fuel charge: 3-days: £110 / 4-days: £125 / 7-days: £165. Includes Central Heating on from 7.30 – 10.30 am; 4 – 10.30 pm, from October to March. Also includes a basket full of logs. This is to be paid to the property owner on the day of arrival.
- **Linen & towels included?:** Yes, included in the rental price
- **Pets welcome?:** £25.00 per dog for a 3-night stay, or £50.00 per dog for a 7-night stay. Maximum of 2 dogs allowed.
- **Other Ts and Cs:** Please note that if the maximum capacity (including children) exceeds 20 guests, there will be an additional per person charge
- **Changeover day:** Fridays
- **Minimum stay:** 3 nights
- **Stag & Hen Do Allowed? :** Hen do's are allowed on request. However, no stag do's are allowed at the house.