

# Landscope House & Barns

Region: The South West    Sleeps: 36

---

## Overview

Nestled in the heart of Devon's breathtaking South Hams, Landscope House & Barns offers the perfect venue for unforgettable celebrations, family get-togethers, or corporate retreats. This stunning estate features the Grade II listed Landscope House, a majestic manor steeped in history, surrounded by acres of lush countryside. Sleeping up to sixteen guests in eight opulent suites, the house exudes timeless elegance. The Barns offer equally luxurious boutique accommodation, housing up to twelve guests across six beautifully restored cottages and suites, with space for an additional eight on plush sofa beds. In total, up to thirty-six fortunate guests can experience the ultimate in comfort and style.

Whether hosting a wedding, special event, or retreat, the estate is a picture-perfect setting. Marquees can be elegantly set up in the meadow, while the remarkable glass-roofed barn—seating up to 180—provides a stunning backdrop for dinner, exhibitions, or corporate functions. Guests can indulge in the finest amenities, from Italian marble-clad bathrooms with freestanding egg baths and Molton Brown toiletries, to sumptuously dressed beds and expansive living spaces. The meticulously maintained grounds feature a sparkling pool, serene lake, and babbling stream, all set within several hundred acres of pristine countryside, perfect for exploration and relaxation. The culinary delights are endless, with options for delicious breakfasts, fine dining, and a range of activities and excursions to keep guests entertained.

Landscope House, originally built around 1840, has been beautifully restored to blend classic charm with modern luxury. With its minimalist yet opulent design, the bedrooms boast romantic allure, while the vibrant living spaces provide energy and warmth. The barn complex, dating back to the late 1700s, showcases the timeless beauty of hand-sawn timbers, exposed rafters, and original dairy features, making it a stunning example of Devon's historic architecture. Each barn has been thoughtfully renovated, with many offering private kitchens and adaptable layouts to suit any group.

In addition to the manor and barns, the estate features several unique spaces, including a converted WWII Nissen Hut, the Dairy Kitchen (perfect for cookery classes or private chef events), and the versatile Glasshouse, which comfortably seats up to 180 guests. The estate's conservatory accommodates intimate gatherings of up to 24 guests.

Inside the manor, no detail has been overlooked in the creation of luxurious entertaining spaces. The ground floor boasts a grand drawing room with a striking fireplace, a cozy reading room with deep red accents, an elegant dining room with exposed stone walls, and a spacious open-plan kitchen and family room. The kitchen is a chef's dream, with professional-grade appliances, two fridges, four ovens, and a vast island that invites social gatherings. Upstairs, five exquisite bedrooms feature super king-size beds, ensuite bathrooms with indulgent baths and wet room showers, and views of the idyllic estate. The top floor offers three more enchanting rooms, some



with feature fireplaces and unique character, like Bedroom Six, with exposed beams, a freestanding bath, and a wet room shower.

The Barns offer a selection of charming accommodations with sleek kitchens and underfloor heating, all designed with style and comfort in mind. From the romantic four-poster bed in the first cottage to the spacious studio with a king-size sleigh bed, each unit blends rustic character with modern luxury. The barn courtyard, once home to dairy cows, is now a private, gated area perfect for children or peaceful moments in the sun.

The grounds are equally impressive, with tranquil lounges, manicured lawns, secret gardens, and an idyllic lily pond. The heated pool is open year-round, offering a serene spot to unwind. Towering trees, lush greenery, and the old oak meadow surround this private sanctuary, ensuring complete relaxation and privacy.

At Landscope House & Barns, luxury, history, and natural beauty converge to create a setting that will make any occasion unforgettable.

*\* Please note that the owners sometimes rent the barns individually. To ensure you have exclusive use of the Estate, please select the maximum capacity of 36.*

*\* Those in smaller groups of 12 - 20 can still enjoy a stay here by renting either Landscope House (<https://www.oliverstravels.com/britain-ireland/devon/south-devon/landscope-house/>) or Landscope Barns (<https://www.oliverstravels.com/britain-ireland/devon/south-devon/landscope-barns/>) individually.*

## Facilities

Eco Friendly (Sustainable) • Recommended • Ideal for Xmas/NY • Private Pool • Walking/Hiking Paths • Walk to Village • Ideal for Teens • Special Offer • Has Offer • Manor • Chef/Cook Available • Pets on Request • Heated Pool • All Bedrooms En-Suite • Ground Floor Bed & Bath • Wi-Fi/Internet • Country Estate • Rural Location • Washing Machine • Outstanding Landscapes • Outdoor Pursuit & Activities • Tourist Towns & Villages • Tumble Dryer • Dishwasher • Satellite TV • Working Fireplace/Woodburner • Heating • Supports the local community (locally owned) • Supports the local community (promotes local businesses) • Promotes Sustainable Living (Recycling) • Promotes Sustainable Living (Vegetable Patch) • Protects and conserves local Heritage

# Interior & Grounds

**Landscope House - 8 bedrooms | 8 bathrooms | sleeps 16**

## Ground Floor

- Fully equipped kitchen with island, professional stove, 4 x ovens, 2 x dishwashers and 2 x fridges & freezers
- Dining room with dining facilities to seat up to 18
- Living and family room with corner sofa and countryside views
- Study

## First Floor

- Bedroom with super-king size bed and en-suite wet room with shower and two person soaking bath
- Bedroom with twin beds and en-suite shower room
- Bedroom with twin beds and en-suite shower room (can be set up as super-king room on request)
- Bedroom with four-poster king-size bed and en-suite shower room
- Bedroom with king-size bed and en-suite shower room accessed via spiral staircase in the room

## Second Floor

- Bedroom with super-king bed, feature bath and en-suite shower room
- Bedroom with super-king bed, sitting area and en-suite bathroom
- Bedroom with king-size bed and en-suite shower room

**Landscope Barns - 6 bedrooms | 6 bathrooms | sleeps 12-20**

## Interior Grounds

### Barn Room 1 (1 bedroom cottage with vaulted ceilings)

- Living & dining room with sofa bed
  - Kitchen with micro & convection ovens, electric hob, dishwasher, fridge and washer/dryer
  - Bedroom with king-size bed and feature bath tub
  - Bathroom with shower
- Sleeps 2 to 4 persons*

### Barn Room 2 (1 bedroom studio-style suite)

- Living room with sofa bed
  - Kitchenette with stove top, microwave and fridge
  - Bedroom with king-size four poster bed and feature bath tub
  - Bathroom with shower
- Sleeps 2 to 4 persons*

### Barn Room 3 (1 bedroom cottage with vaulted ceilings)

- Bedroom with king-size four poster bed
  - The private bath with "wet room" shower
  - Large two person soaking tub
- (- This suite can be connected to Barn room 4 which has a substantial kitchen, living and dining area.)



*Sleeps 2 persons*

**Barn Room 4 (1 bedroom suite)**

- Bedroom with double or twin beds (both have pullout beds so could accommodate 2 additional children)
  - Bathroom with bath and shower
  - Normally combined with Barn Room 3 or 5 to form a larger 2, 3 or 4 bedroom cottage
  - Barn room 4 also forms part of the main barn kitchen and living areas
- Sleeps 2 to 4 persons*

**Barn Room 5 (1 bedroom large suite)**

- Bedroom with super king bed and feature bath tub
  - Bathroom with wet room style shower
  - Can be combined with 4 to form a larger 2 bedroom cottage
- Sleeps 2 to 4 persons*

**Barn Room 6 (1 bedroom large studio cottage)**

- Living area with sofa bed
  - Kitchenette with convection oven, electric hob, dishwasher, microwave, fridge and washer/dryer
  - Bedroom with king-size bed
  - Bathroom with bath and shower
- (- Can be combined with Barn Room 5 to form a larger 2 bedroom cottage)
- Sleeps 2 to 4 persons*

*Outside Grounds*

- Large gardens
- Private pool with automatic heating when below 15C
- Terrace with dining facilities
- Pond

**Little Sustainability Gems About the Property**

The owners have a large amount of land where they have their own animals and they're planting on average 200 trees per year.

# Location & Local Information

Hundreds of acres of estate grounds and countryside surround Landscope House & Barns. It is located three miles from Dartmoor in Devon's South Hams.

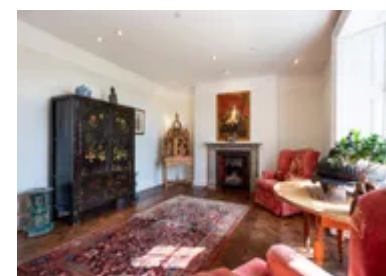
Very close to the house is Hill House Nursery and Gardens with its stunning variety of plants and quaint tea rooms. Buckfastleigh is close to home with the ever popular heritage rolling stock steam trains. The railway was originally built in 1872. It is a brilliant way to travel to Totnes along the River Dart.

The vibrant, historic town of Dartmouth sits on the banks of the picturesque River Dart, offering a fantastic range of attractions and activities including the delightful Babbacombe Model Village, Britannia Royal Navy College Tours, Coleton Fishacre House and Garden, Pennywell Farm, the Flavel Arts Centre and Cinema, Dart estuary walks, Bayards Cove Fort, Berry Head Nature Reserve, plenty of water activities and much much more. The town is brimming with narrow streets, overhanging medieval houses and old quays. It is full of fine dining restaurants, galleries, antique shops and marinas.

Visiting Agatha Christie's mansion, Greenway House and Garden is another wonderful day out. Now owned by the National Trust, visitors can relax in the tranquil, beautiful gardens experiencing what Agatha Christie called 'the loveliest place in the world'.

Salcombe has to be one of the prettiest towns in South Devon. It is lined with boutique shops, art galleries, and gift shops. The town's excellent restaurants serve locally caught fresh seafood and locally farmed produce. You can also taste delicious Salcombe Dairy ice cream and award-winning Salcombe gin. Salcombe's August regatta celebrates all that is great about the town with sailing events, fireworks and much family fun. In town, Salcombe's South Sands and North Sands are ideal family beaches, or you can find a wonderful beach just across the estuary at East Portlemouth. It can be accessed by ferry from Salcombe. To the west lies Bigbury-on-Sea, Bantham and the famous Burgh Island which is accessed at high tide by a sea tractor. The South West Coast Path is absolutely amazing. You can enjoy a walk to Start Point Lighthouse from Salcombe, admiring the splendid views.

Another popular beach day jaunt is to the picturesque Slapton Sands. Slapton Sands has a very moving story attached to it. In 1943 the beach was taken over by the allied forces to use as a rehearsal area for the D-Day landings. Sadly a combination of live ammunition and poor visibility resulted in 749 American servicemen losing their lives. There is a stone monument to commemorate the ill-fated operation. There are plenty of watersports at the beach and a beachside cafe. Many visitors enjoy observing the wildlife in the Nature Reserve, living in and around the freshwater lake, Slapton Ley.



## Local Amenities

Nearest Airport

**Exeter**  
**(26-30 km)**

Nearest Ferry Port	<b>Plymouth (26-30 km)</b>
Nearest Town/City	<b>Ashburton (4 km)</b>
Nearest Village	<b>Landscope (1 km)</b>
Nearest Restaurant	<b>Ashburton (4 km)</b>
Nearest Bar/Pub	<b>Landscope (1 km)</b>
Nearest Beach	<b>Torbay (15 km)</b>
Nearest Golf	<b>Torbay (15 km)</b>

---

## What we love

- Landscope House & Barns have been sensationally restored and refurbished. They offer truly luxurious holiday living while retaining character and charm from days gone by.
- The estate is magnificent with glorious outdoor entertainment spaces including the courtyard, the gardens, the pool, the lake, the lily pond and the atmospheric alfresco lounge and dining areas.
- This is a spectacular wedding, special celebration or event pick with the phenomenal accommodation, the grounds and the spectacular glass roofed barn.
- The bedrooms and bathrooms are heavenly, all with top-of-the-range fittings, double baths and luxury toiletries.

## What you should know...

- The house and barns can be rented together, sleeping up to thirty six guests if you want to use the sofas in the barns. Smaller groups can either rent the house on its own or the barns.
- Please let us know if you are planning a special celebration and are looking for catering services or any other services that will ensure that you experience the holiday of your dreams.
- Please supervise young children in the gardens with the pool and lily pond.

# Terms & Conditions

- **Security deposit:** £1000 to be paid prior to arrival and to be refunded in full subject to a damage inspection on departure.
- **Arrival time:** 3 p.m.
- **Departure time:** 10 a.m.
- **Energy costs included?:** Yes, included in rental price.
- **Linen & towels included?:** Yes, included in rental price.
- **Pets welcome?:** Dogs are welcome at the owner's discretion - please request at time of booking. An additional charge may apply.
- **Other Ts and Cs:** Please note that the owners sometimes rent the barns individually. To ensure you have exclusive use of the Estate, please select the maximum capacity of 36.
- **Changeover day:** Friday.
- **End of stay cleaning:** Standard changeover clean included in the price. Guests are required to leave the accommodation clean, tidy and in the same condition as on their arrival. Any extra cleaning, laundry, maintenance and/or rubbish disposal required will be charged against the security deposit.
- **Smoking Allowed?:** Smoking & Vaping are not permitted.
- **Insurance:** Guests are required to be in possession of a valid insurance policy, which covers them for cancellations, loss of personal belongings, personal liability and any accidental damage caused during their stay.
- **Minimum stay:** Please note that there is a 2-night minimum stay.

**\*Please note: Landscope does not allow external caterers at the House.**